

# EMX 50 E



PROFESSIONAL SCRUBBING MACHINES

**ITA CATALOGO RICAMBI**  
*ENG SPARE PARTS CATALOGUE*

 **FIMAP®**



DOC. 10129447 - Ver. AA - 08-2023

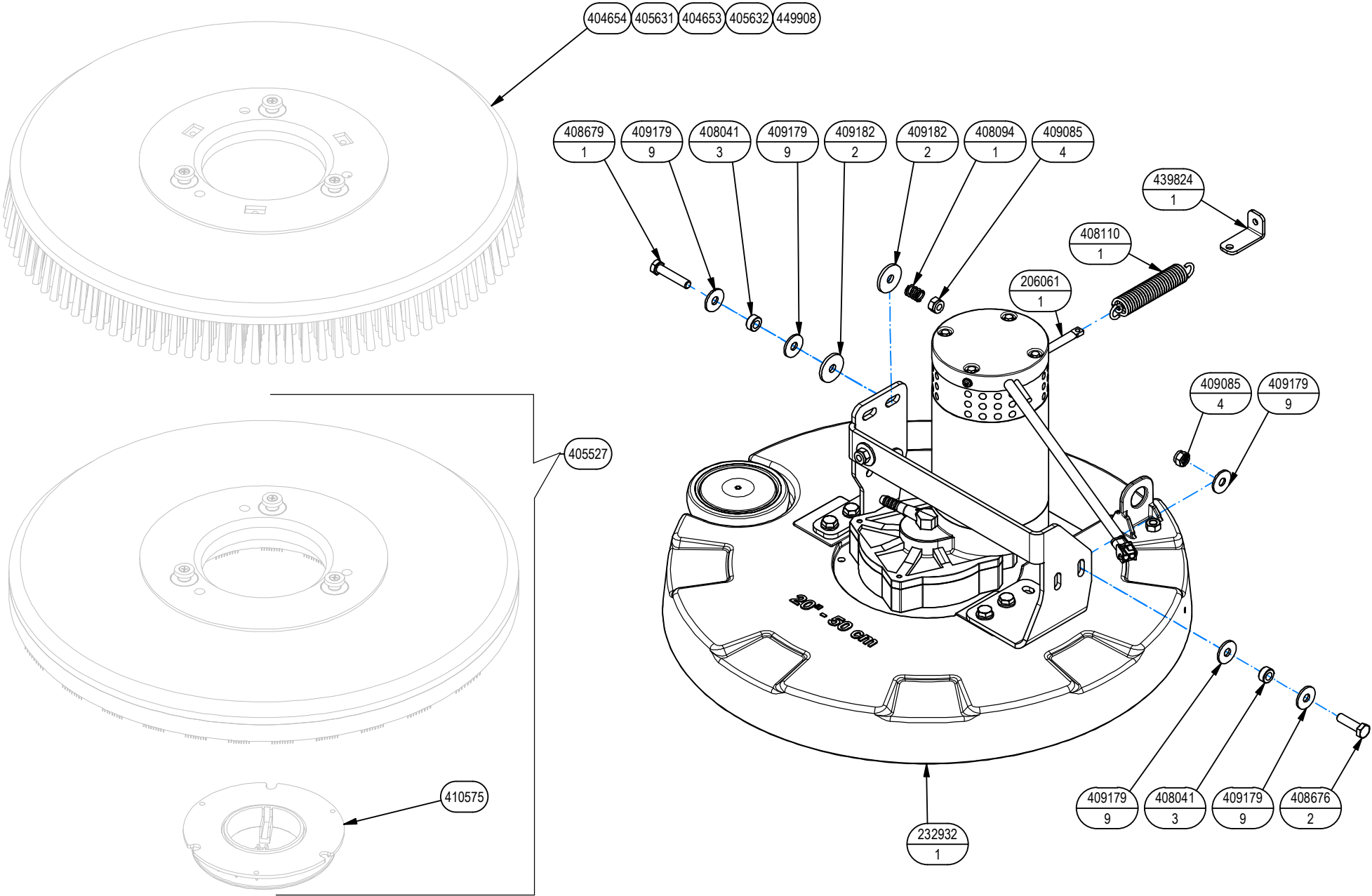
## SOMMARIO

|   |    |
|---|----|
| SOMMARIO .....  | 2  |
| GRUPPO ASSEMBLAGGIO BASAMENTO L=50 CM EMX E 230V(L=20IN)..... | 4  |
| GRUPPO TELAIO E BRACCI EMX B .....                            | 6  |
| GRUPPO TELAIO E BRACCI EMX B .....                            | 8  |
| PREMONTAGGIO TERGIPAVIMENTI L=700 CM (L=27.5 IN).....         | 9  |
| GRUPPO ATTACCO TERGIPAVIMENTO .....                           | 11 |
| ASSIEME SERBATOIO SOLUZIONE .....                             | 13 |
| ASSIEME SERBATOIO RECUPERO .....                              | 17 |
| GRUPPO MOTORE ASPIRAZIONE.....                                | 20 |
| IMPIANTO IDRICO .....   | 22 |
| GRUPPO COMANDO MARCIA.....                                    | 23 |
| GRUPPO IMPIANTO ELETTRICO BASE .....                          | 25 |
| KIT PARASPRUZZI L=50 (20IN) .....                             | 27 |
| GRUPPO ETICHETTE (E 230V).....                                | 28 |
| TABELLA CAVI ELETTRICI .....                                  | 29 |
| TABELLA IMPIANTO IDRICO .....                                 | 33 |

## SUMMARY

|   |    |
|---|----|
| SUMMARY .....   | 3  |
| BRUSHES BASE ASSEMBLY L=50 CM EMX 50 E 230 V(L=20IN)..... | 4  |
| GROUP BASE AND FRAME EMX B.....                           | 6  |
| GROUP BASE AND FRAME EMX B.....                           | 8  |
| SQUEEGEE L=700 CM (27.5 IN) ASSEMBLY .....                | 9  |
| SQUEEGEE CONTROL ASSEMBLY .....                           | 11 |
| SOLUTION TANK ASSEMBLY .....                              | 13 |
| RECOVERY TANK ASSEMBLY .....                              | 17 |
| SUCTION MOTOR ASSEMBLY.....                               | 20 |
| WATER UNIT .....  | 22 |
| CONTROL HANDLEBAR .....                                   | 23 |
| ELETTRIC COMPONENTS ASSEMBLY .....                        | 25 |
| KIT SPLASH GUARD 50 (20IN) .....                          | 27 |
| GROUP DECAL (E 230 V).....                                | 28 |
| ELECTRICAL CABLES TABLE .....                             | 29 |
| WATER SYSTEM TABLE .....                                  | 33 |

232933 - GRUPPO BASAMENTO 50 E 230V  
GROUP BASE BRUSH



## 232933 - GRUPPO BASAMENTO 50 E 230V

## GROUP BASE BRUSH

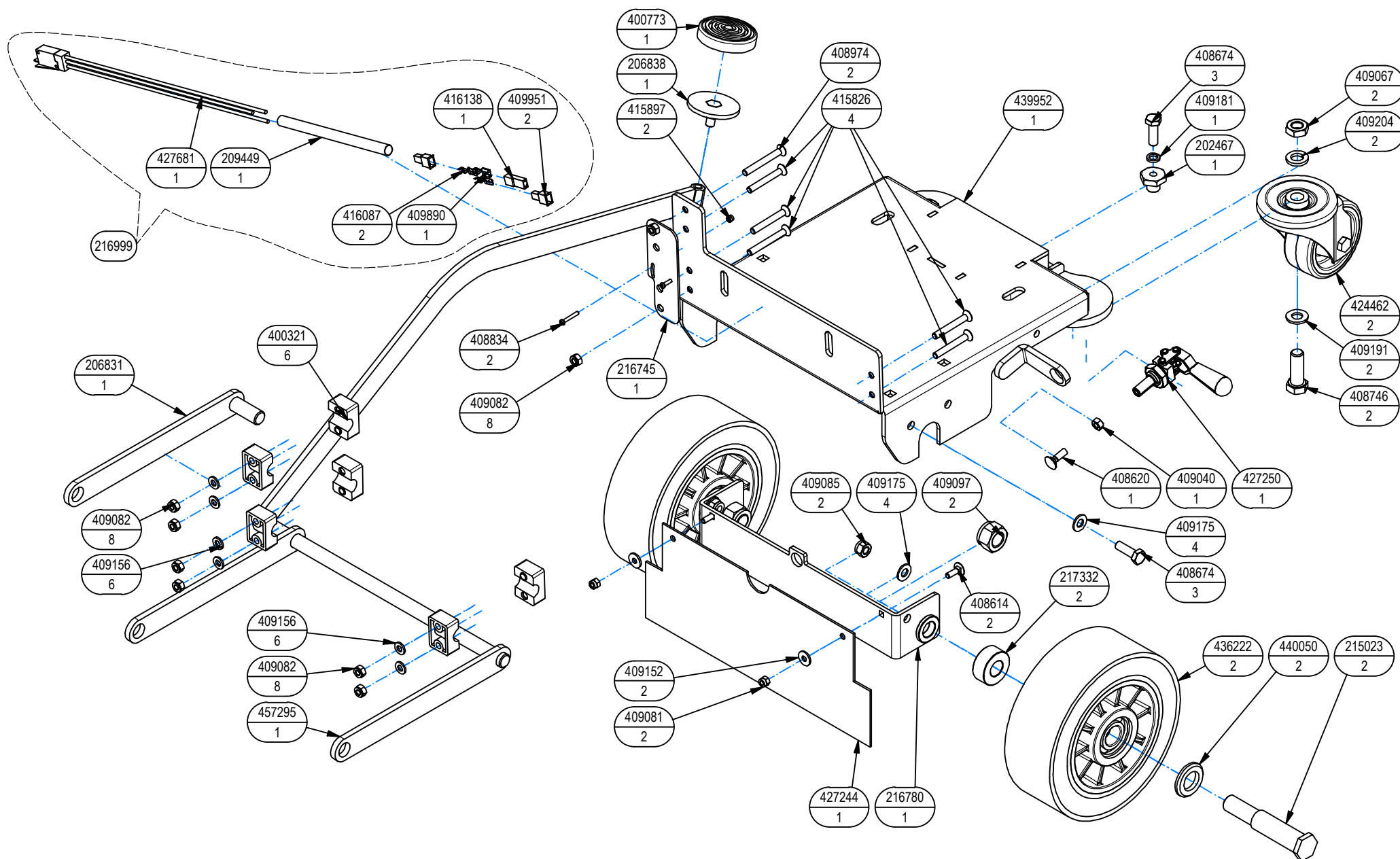
| — | TECHNICAL<br>NEWS | SERIAL<br>NUMBER | CODICE | QTÀ | DESCRIZIONE                           | DESCRIPTION                       |
|---|-------------------|------------------|--------|-----|---------------------------------------|-----------------------------------|
|   |                   |                  | 206061 | 1   | REGISTRO PRESSIONE SPOSTAM. LATER.    | DOWN PRESSURE ADJUSTER            |
|   |                   |                  | 232932 | 1   | PREM. BASAMENTO E 230V                | BRUSH BASE ASSEMBLY               |
|   |                   |                  | 404653 | 1   | SPAZZOLA 20" - Ds 508 Df495 -PPL 0,9  | BRUSH Ds20in Df19.5in PPL 0,9     |
|   |                   |                  | 404654 | 1   | SPAZZOLA 20" - Ds 508 Df495 -PPL 0,3  | BRUSH Ds20in Df19.5in PPL 0,3     |
|   |                   |                  | 405527 | 1   | DISCO TRASCINATORE D=497 - 20" C-LOCK | PAD HOLDER 20 in                  |
|   |                   |                  | 405631 | 1   | SPAZZOLA 20" - Ds 508 Df495 -PPL 0,6  | BRUSH Ds20in Df19.5in PPL 0,6     |
|   |                   |                  | 405632 | 1   | SPAZZOLA 20" Ds 508 Df495 -TYNEX 1    | BRUSH Ds20in Df19.5in TYNEX 1     |
|   |                   |                  | 408041 | 3   | BOCCOLA D=14,9 D=8,25 S=7 OT58        | BUSHING D=14,9 D=8,25 S=7         |
|   |                   |                  | 408094 | 1   | MOLLA 12x1,5x15                       | SPRING 12x1,5x15                  |
|   |                   |                  | 408110 | 1   | MOLLA TRAZIONE 20x2,8x109             | SPRING 20x2,8x109                 |
|   |                   |                  | 408676 | 2   | VITE M8X30 UNI 5739 ZINC              | SCREW M8X30 UNI 5739 ZINC         |
|   |                   |                  | 408679 | 1   | VITE M8x40 UNI 5739 ZINC              | SCREW M8x40 UNI 5739 ZINC         |
|   |                   |                  | 409085 | 4   | DADO M8 UNI 7474 - ZINC               | NUT M8 UNI 7474 - ZINC            |
|   |                   |                  | 409179 | 9   | RONDELLA D24 UNI 6593 ZINC            | WASHER D24 UNI 6593 ZINC          |
|   |                   |                  | 409182 | 2   | RONDELLA 8,5x30x3 NYLON               | WASHER 8,5x30x3 NYLON             |
|   |                   |                  | 410575 | 1   | CENTER LOCK H=20 A VITE VERDE         | CENTER LOCK H=20 - THREADED GREEN |
|   |                   |                  | 439824 | 1   | STAFFA REGISTRO MOLLA BASAMENTO       | BRACKET                           |
|   |                   |                  | 449908 | 1   | SPAZZOLA 20" Ds 508 Df495 -TAMPICO    | BRUSH Ds20in Df19.5in TAMPICO     |

# 232435 - GRUPPO TELAIO E BRACCI EMX B

## GROUP BASE CONTROL AND FRAME UNIT

10126115-AA

02/05



## 232435 - GRUPPO TELAIO E BRACCI EMX B

## GROUP BASE CONTROL AND FRAME UNIT

| – | TECHNICAL<br>NEWS | SERIAL<br>NUMBER | CODICE | QTÀ | DESCRIZIONE                            | DESCRIPTION                      |
|---|-------------------|------------------|--------|-----|--|----------------------------------|
|   |                   |                  | 202467 | 1   | BOCCOLA CH22 d=M8 S=17 AVP             | BUSHING CH22 d=M8 S=17 AVP       |
|   |                   |                  | 206831 | 1   | BRACCIO TERZO PUNTO                    | ARM                              |
|   |                   |                  | 206838 | 1   | PEDALE                                 | PEDAL                            |
|   |                   |                  | 215023 | 2   | PERNO RUOTE D=20 L=105,5 C40           | STUD AXLE D=20 L=105,5 C40       |
|   |                   |                  | 216745 | 1   | STAFFA FINECORSO BASAMENTO SPAZZOLE    | BRACKET                          |
|   |                   |                  | 216780 | 1   | SUPPORTO RUOTE                         | WHEEL SUPPORT                    |
| ↓ |                   |                  | 216999 | 1   | MICROINT. ABV1612613 + FASTON          | MICROSWITCH ABV1612613           |
| ↑ |                   |                  | 427681 | 1   | MICROINT. ABV1612613 C/LAMA PIATTA     | MICROSWITCH ABV1612613           |
| ↑ |                   |                  | 409890 | 1   | FASTON FEMMINA 6,3 NUDO                | FASTON FEMALE 6,3                |
| ↑ |                   |                  | 416087 | 2   | FASTON MASCHIO NUDO D.6,3              | FASTON MALE 6,3                  |
| ↑ |                   |                  | 416138 | 1   | COPRIFASTON X FEMMINA D.6.3 25X9 BIAN  | FEMALE FASTON COVER              |
| ↑ |                   |                  | 209449 | 1   | TUBETTO RESTRINGIBILE 9,5X150          | HEATSHRINKABLE PIPE              |
| ↑ |                   |                  | 409951 | 2   | COPRIFASTON MASCHIO 6,3                | MALE FASTON COVER                |
|   |                   |                  | 217332 | 2   | DISTANZIALE D=35 d=16 S=15             | SPACER D=35 d=16 S=15            |
|   |                   |                  | 400321 | 6   | MORSETTO SUPPORTO SPAZZOLE             | CLAMP                            |
|   |                   |                  | 400773 | 1   | COPRI PEDALE D56                       | PEDAL COVER                      |
|   |                   |                  | 408614 | 2   | VITE M5x16 UNI 5732 ZINC               | SCREW M5x16 UNI 5732 ZINC        |
|   |                   |                  | 408620 | 1   | VITE M6X20 UNI 5732 ZINC               | SCREW M6X20 UNI 5732 ZINC        |
|   |                   |                  | 408674 | 3   | VITE M8x25 UNI 5739 ZINC               | SCREW M8x25 UNI 5739 ZINC        |
|   |                   |                  | 408746 | 2   | VITE M12X35 UNI 5739 ZINC              | SCREW M12X35 UNI 5739 ZINC       |
|   |                   |                  | 408834 | 2   | VITE M3X20 UNI 7687 ZINC               | SCREW M3X20 UNI 7687 ZINC        |
|   |                   |                  | 408974 | 2   | VITE M6x50 UNI 5933 ZINC.              | SCREW M6x50 UNI 5933 ZINC.       |
|   |                   |                  | 409040 | 1   | DADO M6 UNI 5588 ZINC                  | NUT M6 UNI 5588 ZINC             |
|   |                   |                  | 409067 | 2   | DADO M12 UNI 5589 ZINC                 | NUT M12 UNI 5589 ZINC            |
|   |                   |                  | 409081 | 2   | DADO M5x7 UNI 7473 AISI                | NUT M5x7 UNI 7473 AISI           |
|   |                   |                  | 409082 | 8   | DADO M6 UNI 7474 ZINC                  | NUT M6 UNI 7474 ZINC             |
|   |                   |                  | 409085 | 2   | DADO M8 UNI 7474 - ZINC                | NUT M8 UNI 7474 - ZINC           |
|   |                   |                  | 409097 | 2   | DADO M16 UNI 7474                      | NUT M16 UNI 7474                 |
|   |                   |                  | 409152 | 2   | RONDELLA D15 UNI 6593 AISI             | WASHER D15 UNI 6593 AISI         |
|   |                   |                  | 409156 | 6   | RONDELLA D12 UNI 6592 ZINC             | WASHER D12 UNI 6592 ZINC         |
|   |                   |                  | 409175 | 4   | RONDELLA D17 UNI 6592 ZINC.            | WASHER D17 UNI 6592 ZINC.        |
|   |                   |                  | 409181 | 1   | RONDELLA D13 UNI 1751 ZINC             | LOCK WASHER D13 UNI 1751 ZINC    |
|   |                   |                  | 409191 | 2   | RONDELLA D21 UNI 6592 ZINC             | WASHER D21 UNI 6592 ZINC         |
|   |                   |                  | 409204 | 2   | RONDELL 12x4x3 RIFORZ.ASA B27 ZIN      | WASHER 12x4x3 RIFORZ.ASA B27 ZIN |
|   |                   |                  | 415826 | 4   | VITE M6X45 UNI 5933 ZINC               | SCREW M6X45 UNI 5933 ZINC        |
|   |                   |                  | 415897 | 2   | DADO M3 UNI 7474 AISI                  | NUT M3 UNI 7474 AISI             |
|   |                   |                  | 424462 | 2   | RUOTA PIV. D=80 H=32 2 CUSCINETTI AISI | CASTOR WHEEL D=80 H=32           |

## 232435 - GRUPPO TELAIO E BRACCI EMX B

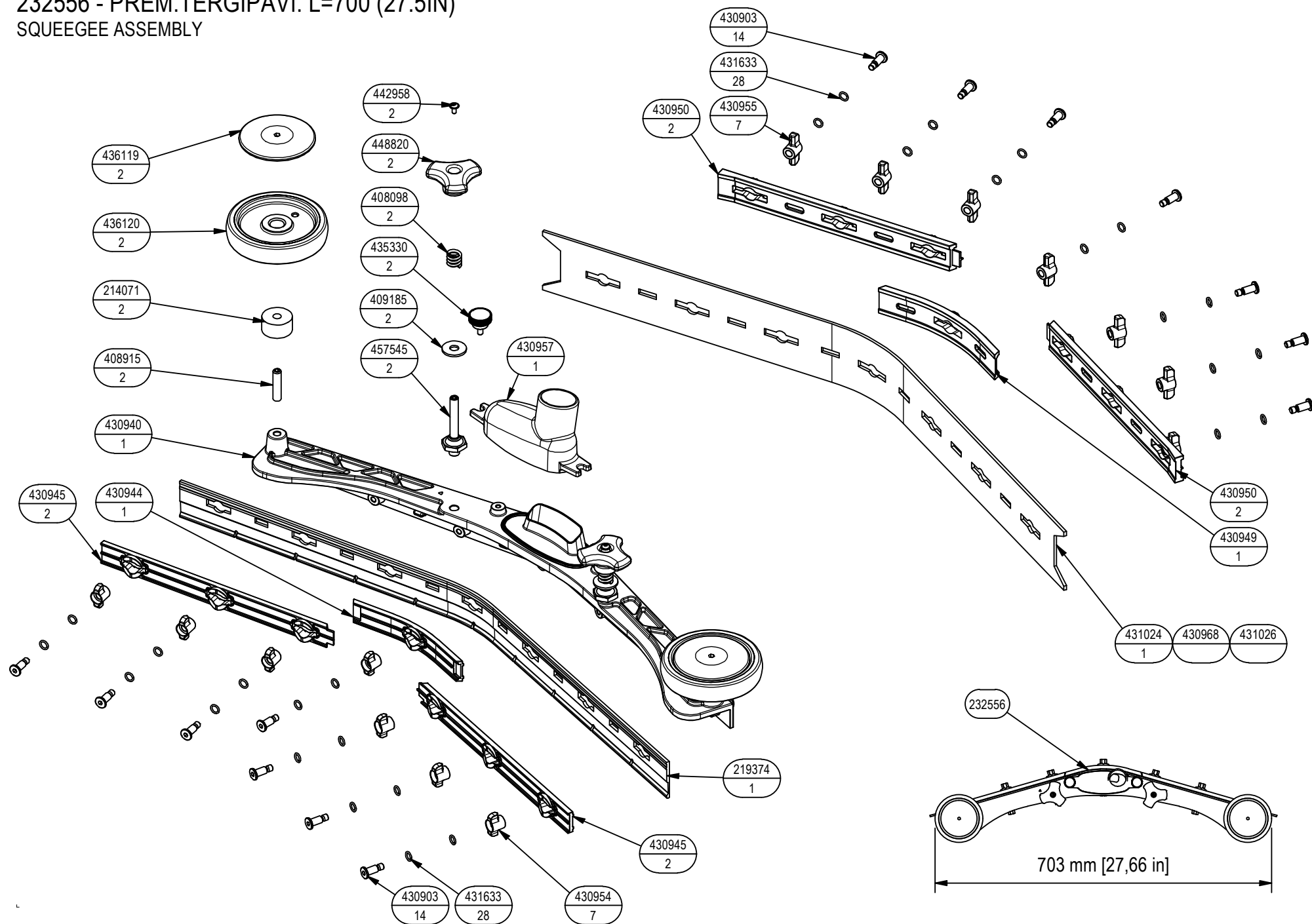
02/05

## GROUP BASE CONTROL AND FRAME UNIT

| — | TECHNICAL<br>NEWS | SERIAL<br>NUMBER | CODICE | QTÀ | DESCRIZIONE                          | DESCRIPTION                   |
|---|-------------------|------------------|--------|-----|--------------------------------------|-------------------------------|
|   |                   |                  | 427244 | 1   | GOMMA PARASPRUZZI                    | SPLASH GUARD                  |
|   |                   |                  | 427250 | 1   | LEVA FRENO 602                       | BRAKE LEVER 602               |
|   |                   |                  | 436222 | 2   | RUOTA D=175 d=20 S=60 CON CUSCINETTI | WHEEL D=175 d=20 S=60         |
|   |                   |                  | 439952 | 1   | TELAIO                               | FRAME                         |
|   |                   |                  | 440050 | 2   | DISTANZIALE D=35 d=20,1 S=4,4 S235   | SPACER D=35 d=20,1 S=4,4 S235 |
|   |                   |                  | 457295 | 1   | BRACCIO COMANDO BASAMENTO            | ARM                           |



232556 - PREM.TERGIPAVI. L=700 (27.5IN)  
SQUEEGEE ASSEMBLY

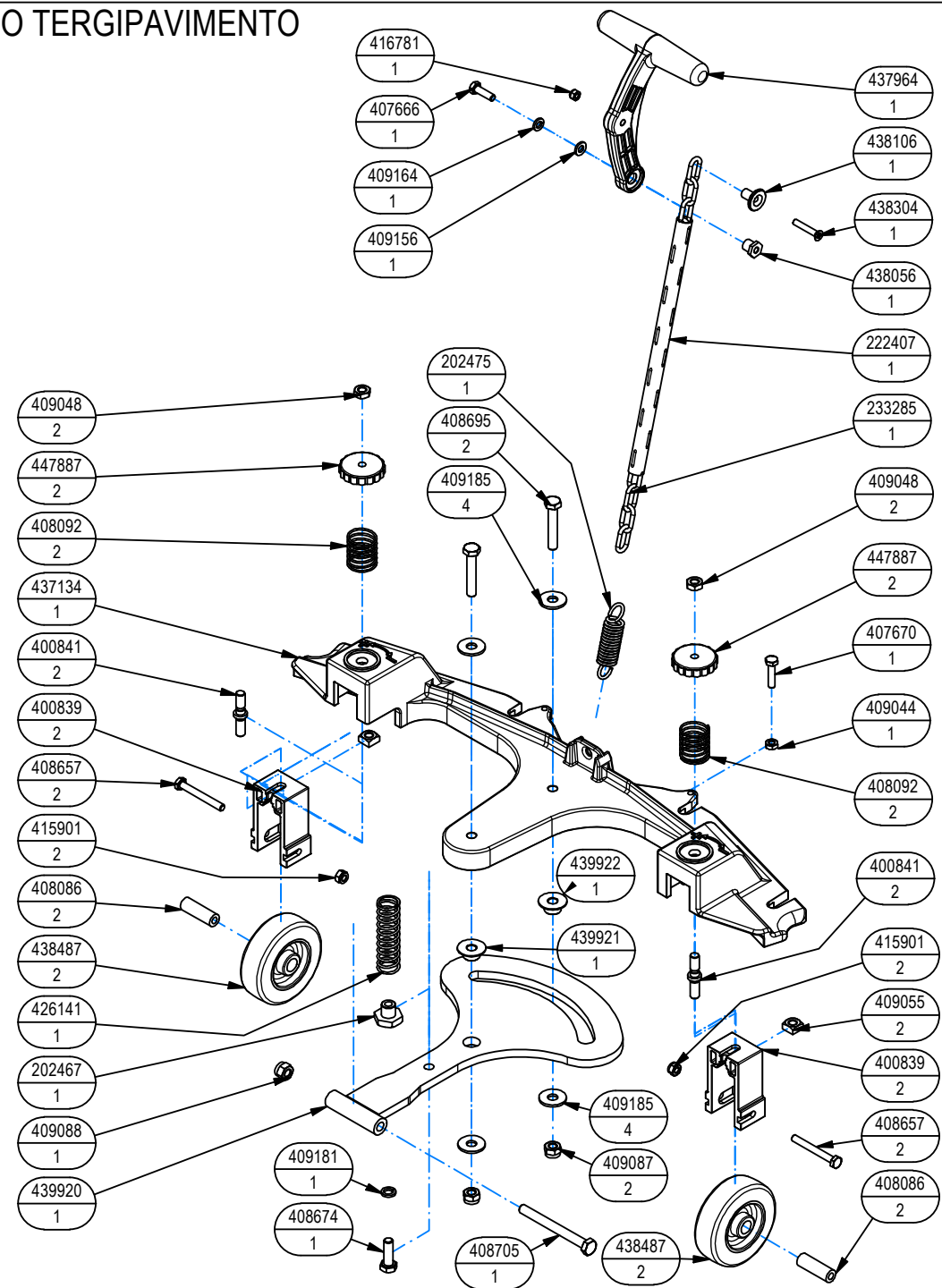


## 232556 - PREM.TERGIPAVI. L=700 (27.5IN)

## SQUEEGEE ASSEMBLY

| – | TECHNICAL<br>NEWS | SERIAL<br>NUMBER | CODICE | QTÀ | DESCRIZIONE                              | DESCRIPTION                              |
|---|-------------------|------------------|--------|-----|--|--|
| ↓ |                   |                  | 232556 | 1   | PREM. TERGIPAVIMENTO L=700               | SQUEEGEE PRE-ASSEMBLY                    |
| ↑ |                   |                  | 214071 | 2   | DISTANZIALE D=30 d=8,2 S=16 PP           | SPACER D=30 d=8,2 S=16 PP                |
| ↑ |                   |                  | 219374 | 1   | GOMMA ANT. POLIURETANO H=45 L=690 S=4    | FRONT BLADE H=45 L=690 S=4               |
| ↑ |                   |                  | 408098 | 2   | MOLLA COMPR. 14,5x15x2,5 COLON. TERGIP.  | SPRING 14,5x15x2,5                       |
| ↑ |                   |                  | 408915 | 2   | GRANO M8X35 UNI 5923                     | SET SCREW M8X35 UNI 5923                 |
| ↑ |                   |                  | 409185 | 2   | RONDELLA D24 UNI 6593 AISI               | WASHER D24 UNI 6593 AISI                 |
| ↑ |                   |                  | 430903 | 14  | PERNO MANOPOLINA D=11,8 d=7 M=6 H=22     | PIN D=11,8 d=7 M=6 H=22                  |
| ↑ |                   |                  | 430940 | 1   | CORPO TERGIPAVIMENTO L=638               | SQUEEGEE SHOE L=638                      |
| ↑ |                   |                  | 430944 | 1   | PREMIGOMMA ANTERIORE CENTRALE            | FRONT CENTRAL STRIP                      |
| ↑ |                   |                  | 430945 | 2   | PREMIGOMMA ANTERIORE L=638               | FRONT STRIP L=638                        |
| ↑ |                   |                  | 430949 | 1   | PREMIGOMMA POSTERIORE CENTRALE           | REAR CENTRAL STRIP                       |
| ↑ |                   |                  | 430950 | 2   | PREMIGOMMA POSTERIORE L=638              | REAR STRIP L=638                         |
| ↑ |                   |                  | 430954 | 7   | GALLETTO CHIUSURA ANTERIORE              | FRONT WING NUT                           |
| ↑ |                   |                  | 430955 | 7   | GALLETTO CHIUSURA POSTERIORE             | REAR WING NUT                            |
| ↑ |                   |                  | 430957 | 1   | BOCCHETTA DRITTA D=40 + GUARN.           | OPENING D=40                             |
| ↑ |                   |                  | 431024 | 1   | GOMMA POST. 33 SHORE H=70 L=750 S=4      | REAR SQUEEGEE BLADE LATEX H=70 L=750 S=4 |
|   |                   |                  | 430968 | 1   | GOMMA POST. POLIURETANO H=70 L=750 S=4   | REAR RUBBER POLYURETHANE H=70 L=750 S=4  |
|   |                   |                  | 431026 | 1   | GOMMA POST. LATEX H=70 L=750 S=4         | REAR RUBBER LATEX H=70 L=750 S=4         |
| ↑ |                   |                  | 431633 | 28  | O-RING 7x1,5 NBR 70 SHORE                | O-RING 7x1,5 NBR 70 SHORE                |
| ↑ |                   |                  | 435330 | 2   | VOLANTINO ZIGRINATO ZPX/22 M5x10 6331400 | KNOB ZPX/22 M5x10                        |
| ↑ |                   |                  | 436119 | 2   | BOCCOLA COPERTURA RUOTINA BASAMENTO      | BUMPER WHEEL COVER                       |
| ↑ |                   |                  | 436120 | 2   | RUOTINA PARACOLPI BASAMENTO D=100 H=20   | BUMPER WHEEL                             |
| ↑ |                   |                  | 442958 | 2   | VITE M4x8/8 ISO 7380-2 AISI              | SCREW M4x8/8 ISO 7380-2 AISI             |
| ↑ |                   |                  | 448820 | 2   | MANOPOLA DI BLOCCO PARASPRUZZI           | KNOB                                     |
| ↑ |                   |                  | 457545 | 2   | COLONNETTA SGANCIO M10-CH22 L=68 - M8    | STUD BOLT M10-CH22 L=68 - M8             |

232433 - GRUPPO ATTACCO TERGIPAVIMENTO  
SQUEEGEE CONTROL ASSEMBLY

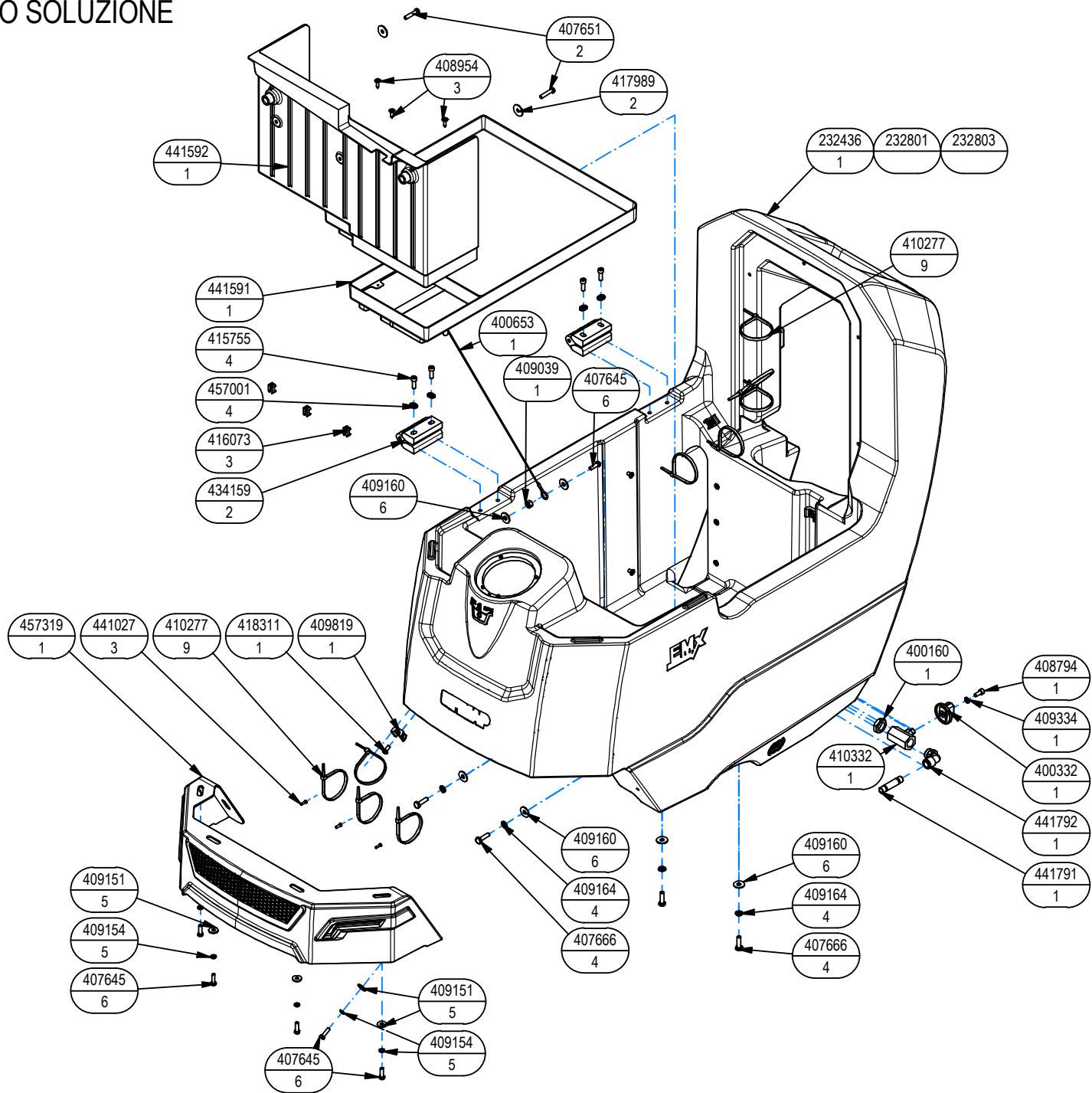


## 232433 - GRUPPO ATTACCO TERGIPAVIMENTO

## SQUEEGEE CONTROL ASSEMBLY

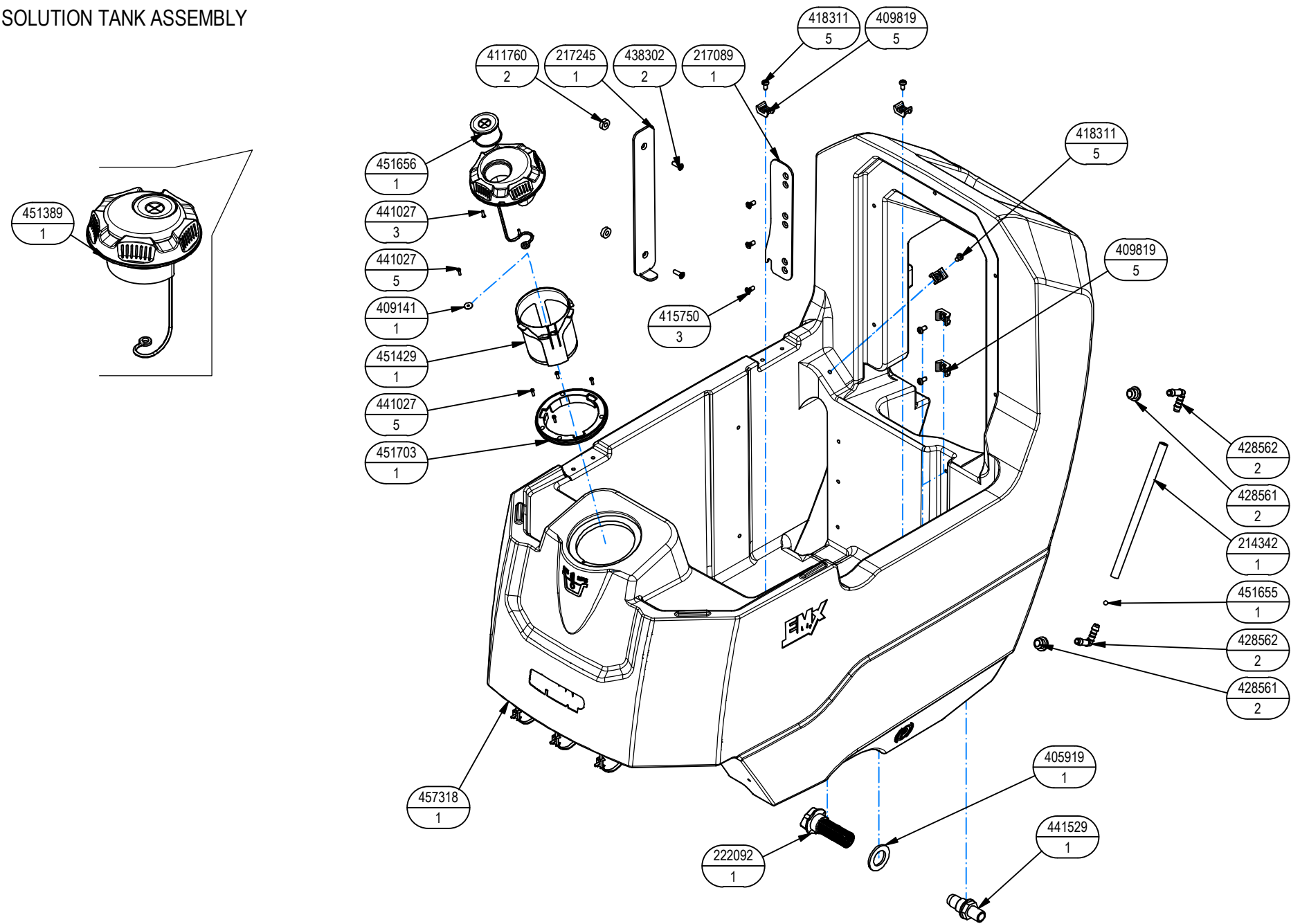
| - | TECHNICAL<br>NEWS | SERIAL<br>NUMBER | CODICE | QTÀ | DESCRIZIONE                             | DESCRIPTION                       |
|---|-------------------|------------------|--------|-----|---|-----------------------------------|
|   |                   |                  | 202467 | 1   | BOCCOLA CH22 d=M8 S=17 AVP              | BUSHING CH22 d=M8 S=17 AVP        |
|   |                   |                  | 202475 | 1   | MOLLA TRAZIONE 17,5x2,5x69              | SPRING 17,5x2,5x69                |
|   |                   |                  | 222407 | 1   | GUAINA TERMORESTRING. D.12,7 NERA L=247 | HEAT SHRINKABLE PIPE D.12,7 L=247 |
|   |                   |                  | 233285 | 1   | CATENA NR.18 - LUNGHEZZA INTERNA = 360  | CHAIN NR.18 L=360                 |
|   |                   |                  | 400839 | 2   | STAFFA RUOTA ATTACCO TERGI SIMPLA       | SUPPORT                           |
|   |                   |                  | 400841 | 2   | PERNO REGISTRO SIMPLA                   | PIN                               |
|   |                   |                  | 407666 | 1   | VITE M6X20 UNI 5739 ZINC                | SCREW M6X20 UNI 5739 ZINC         |
|   |                   |                  | 407670 | 1   | VITE M6x25 UNI 5739 AISI                | SCREW M6x25 UNI 5739 AISI         |
|   |                   |                  | 408086 | 2   | DISTANZIALE D=12 d=6,2 S=36             | SPACER D=12 d=6,2 S=36            |
|   |                   |                  | 408092 | 2   | MOLLA COMPR. E 26 L 30 FILO 1,5         | SPRING E 26 L=30 WIRE=1,5         |
|   |                   |                  | 408657 | 2   | VITE M6X50 UNI 5739 AISI                | SCREW M6X50 UNI 5739 AISI         |
|   |                   |                  | 408674 | 1   | VITE M8x25 UNI 5739 ZINC                | SCREW M8x25 UNI 5739 ZINC         |
|   |                   |                  | 408695 | 2   | VITE M8x45 UNI 5739 AISI                | SCREW M8x45 UNI 5739 AISI         |
|   |                   |                  | 408705 | 1   | VITE M8X80 UNI 5737 AISI                | SCREW M8X80 UNI 5737 AISI         |
|   |                   |                  | 409044 | 1   | DADO M6x4 UNI 5589 AISI                 | NUT M6x4 UNI 5589 AISI            |
|   |                   |                  | 409048 | 2   | DADO M8x5 UNI 5589 AISI                 | NUT M8x5 UNI 5589 AISI            |
|   |                   |                  | 409055 | 2   | DADO M8 QUADRO DIN557 AISI              | NUT M8 DIN557 AISI                |
|   |                   |                  | 409087 | 2   | DADO M8 UNI 7474 AISI                   | NUT M8 UNI 7474 AISI              |
|   |                   |                  | 409088 | 1   | DADO M8 UNI 7473 AISI                   | NUT M8 UNI 7473 AISI              |
|   |                   |                  | 409156 | 1   | RONDELLA D12 UNI 6592 ZINC              | WASHER D12 UNI 6592 ZINC          |
|   |                   |                  | 409164 | 1   | RONDELLA D11,8 UNI 1751 ZINC            | WASHER D11,8 UNI 1751 ZINC        |
|   |                   |                  | 409181 | 1   | RONDELLA D13 UNI 1751 ZINC              | LOCK WASHER D13 UNI 1751 ZINC     |
|   |                   |                  | 409185 | 4   | RONDELLA D24 UNI 6593 AISI              | WASHER D24 UNI 6593 AISI          |
|   |                   |                  | 415901 | 2   | DADO M6 UNI 7474 AISI                   | NUT M6 UNI 7474 AISI              |
|   |                   |                  | 416781 | 1   | DADO M5X5 UNI 7473 ZINC                 | NUT M5X5 UNI 7473 ZINC            |
|   |                   |                  | 426141 | 1   | MOLLA A COMPRESSIONE D 20X2X70          | SPRING D 20X2X70                  |
|   |                   |                  | 437134 | 1   | BRACCIO POSTERIORE ATTACCO TERGI        | ARM                               |
|   |                   |                  | 437964 | 1   | LEVA SOLLEVAMENTO TERGI                 | HANDLE                            |
|   |                   |                  | 438056 | 1   | BOCCOLA LEVA TERGI                      | BUSHING                           |
|   |                   |                  | 438106 | 1   | BOCCOLA D=20-8 d=5,2 S=16,5 AVP         | BUSHING D=20-8 d=5,2 S=16,5       |
|   |                   |                  | 438304 | 1   | VITE M5x30 UNI 7688 ZINC NERO           | SCREW M5x30 UNI 7688 BURNISHED    |
|   |                   |                  | 438487 | 2   | RUOTA D=80 H=25 GOMMA GRIGIA            | WHEEL D=80 H=25                   |
|   |                   |                  | 439920 | 1   | BRACCIO ANT. ATTACCO                    | ARM                               |
|   |                   |                  | 439921 | 1   | BOCCOLA D=25-14,9 d=8,2 S=9,2 OT58      | BUSHING D=25-14,9 d=8,2 S=9,2     |
|   |                   |                  | 439922 | 1   | BOCCOLA D=25-14,9 d=8,2 S=9,7 NYLON     | BUSHING D=25-14,9 d=8,2 S=9,7     |
|   |                   |                  | 447887 | 2   | VOLANTINO PASSANTE V/40/PS M8 YEL       | KNOB V/40/PS M8                   |

232437 - GRUPPO SERBATOIO SOLUZIONE  
SOLUTION TANK ASSEMBLY



232437 - GRUPPO SERBATOIO SOLUZIONE  
SOLUTION TANK ASSEMBLY

06A



## 232437 - GRUPPO SERBATOIO SOLUZIONE

## SOLUTION TANK ASSEMBLY

| –  | TECHNICAL<br>NEWS | SERIAL<br>NUMBER | CODICE | QTÀ | DESCRIZIONE                              | DESCRIPTION                            |
|----|-------------------|------------------|--------|-----|--|--|
| ↓  |                   |                  | 232436 | 1   | PREM. SERBATOIO SOL. RAL 7016            | SOLUTION TANK PREASSEMBLED RAL 7016    |
| ↑  |                   |                  | 217089 | 1   | STAFFA FERMO BASAMENTO                   | BRACKET                                |
| ↑  |                   |                  | 217245 | 1   | STAFFA SERBATOIO                         | BRACKET                                |
| ↑  |                   |                  | 415750 | 3   | VITE M5X12 UNI 7688 ZINC.                | SCREW M5X12 UNI 7688 ZINC.             |
| ↑  |                   |                  | 222092 | 1   | FILTRO D=23 H=53 TAPPO 3/4               | FILTER D=23 H=53 TAPPO 3/4             |
| ↑  |                   |                  | 441529 | 1   | NIPPLO 1/2" 3/8" M-M CON CODOLO          | NIPPLE 1/2" 3/8"                       |
| ↑  |                   |                  | 457318 | 1   | SERBATOIO SOLUZIONE RAL 7016             | SOLUTION TANK RAL 7016                 |
| ↑  |                   |                  | 405919 | 1   | GUARNIZIONE D=40 d=26 S=3 LUBRITENE      | GASKET D=40 d=26 S=3                   |
| ↑  |                   |                  | 428561 | 2   | GUARNIZIONE D=20 d=8 L=12,5 TIPO PWS8    | GASKET D=20 d=8 L=12,5                 |
| ↑  |                   |                  | 428562 | 2   | RACCORDO A GOMITO D=8 L=30 TIPO WS8      | ELBOW FITTING D=8 L=30                 |
| ↑  |                   |                  | 214342 | 1   | TUBO VITREO D=12 d=8 L=210               | HOSE D=12 d=8 L=210                    |
| ↑  |                   |                  | 451703 | 1   | FLANGIA AGGANCIO FILTRO SERB. SOLUZIONE  | FLANGE                                 |
| ↑  |                   |                  | 441027 | 5   | VITE AUTOF. D.3x10 UNI 9707 AISI         | METAL SHEET SCREW D.3x10 UNI 9707 AISI |
| ↑  |                   |                  | 451429 | 1   | FILTRO BAIONETTA RETE 18 MESH SERB. SOL. | SCREEN                                 |
| ↑↓ |                   |                  | 451389 | 1   | TAPPO A BAIONETTA D=110 CON MISURINO     | MEASURING CAP D=110                    |
| ↑↑ |                   |                  | 441027 | 3   | VITE AUTOF. D.3x10 UNI 9707 AISI         | METAL SHEET SCREW D.3x10 UNI 9707 AISI |
| ↑↑ |                   |                  | 451656 | 1   | TAPPO D=36 RIEMPIMENTO RAPIDO            | HOSE RETAINER CAP D=36                 |
| ↑  |                   |                  | 409141 | 1   | ROSETTA 3X12X0,8 AISI                    | WASHER 3X12X0,8 AISI                   |
| ↑  |                   |                  | 451655 | 1   | SFERA D=6 PP VERDE                       | BALL D=6 PP                            |
| ↑  |                   |                  | 411760 | 2   | DISTANZIALE D=15 d=6,5 S=5 PVC           | SPACER D=15 d=6,5 S=5 PVC              |
| ↑  |                   |                  | 409819 | 5   | BASETTA TC 142 PER FASCETTE              | SUPPORT TC 142                         |
| ↑  |                   |                  | 418311 | 5   | VITE M5x10 UNI 7687 ZINC.                | SCREW M5x10 UNI 7687 ZINC.             |
| ↑  |                   |                  | 438302 | 2   | VITE M5x16 UNI 7688 ZINC. NERO           | SCREW M5x16 UNI 7688 BURNISHED         |
|    |                   |                  | 232801 | 1   | PREM. SERBATOIO SOL. RAL7016 AB          | PREASSEMBLED SOLUTION TANK RAL7016     |
|    |                   |                  | 232803 | 1   | PREM. SERBATOIO SOL. RICICL.             | PREASSEMBLED SOLUTION TANK W RECYCLE   |
|    |                   |                  | 400160 | 1   | DADO 3/8" GAS H=6                        | NUT 3/8" H=6                           |
|    |                   |                  | 400332 | 1   | MANOPOLA RUBINETTO                       | KNOB                                   |
|    |                   |                  | 400653 | 1   | CORDA CON OCCHIELLI D 2X450 SVILUPPO     | ROPE                                   |
|    |                   |                  | 407645 | 6   | VITE M5X16 UNI 5739 ZINC                 | SCREW M5x10 UNI 7687 ZINC              |
|    |                   |                  | 407651 | 2   | VITE M5X25 UNI 5739 ZINC                 | SCREW M5X25 UNI 5739 ZINC              |
|    |                   |                  | 407666 | 4   | VITE M6X20 UNI 5739 ZINC                 | SCREW M6X20 UNI 5739 ZINC              |
|    |                   |                  | 408794 | 1   | VITE M5X12 UNI 5931 AISI                 | SCREW M5X12 UNI 5931 AISI              |
|    |                   |                  | 408954 | 3   | VITE D.4,2X16 UNI 6109 ZINC              | SCREW D.4,2X16 UNI 6109 ZINC           |
|    |                   |                  | 409039 | 1   | DADO M6x6 UNI 5587 ZINC                  | NUT M6x6 UNI 5587 ZINC                 |
|    |                   |                  | 409151 | 5   | RONDELLA 5,5x15x1.5 UNI 6593 ZINC        | WASHER 5,5x15x1.5 UNI 6593 ZINC        |
|    |                   |                  | 409154 | 5   | RONDELLA M5 UNI 1751 ZINC                | WASHER M5 UNI 1751 ZINC                |
|    |                   |                  | 409160 | 6   | RONDELLA D18 UNI 6593 ZINC               | WASHER D18 UNI 6593 ZINC               |

## 232437 - GRUPPO SERBATOIO SOLUZIONE

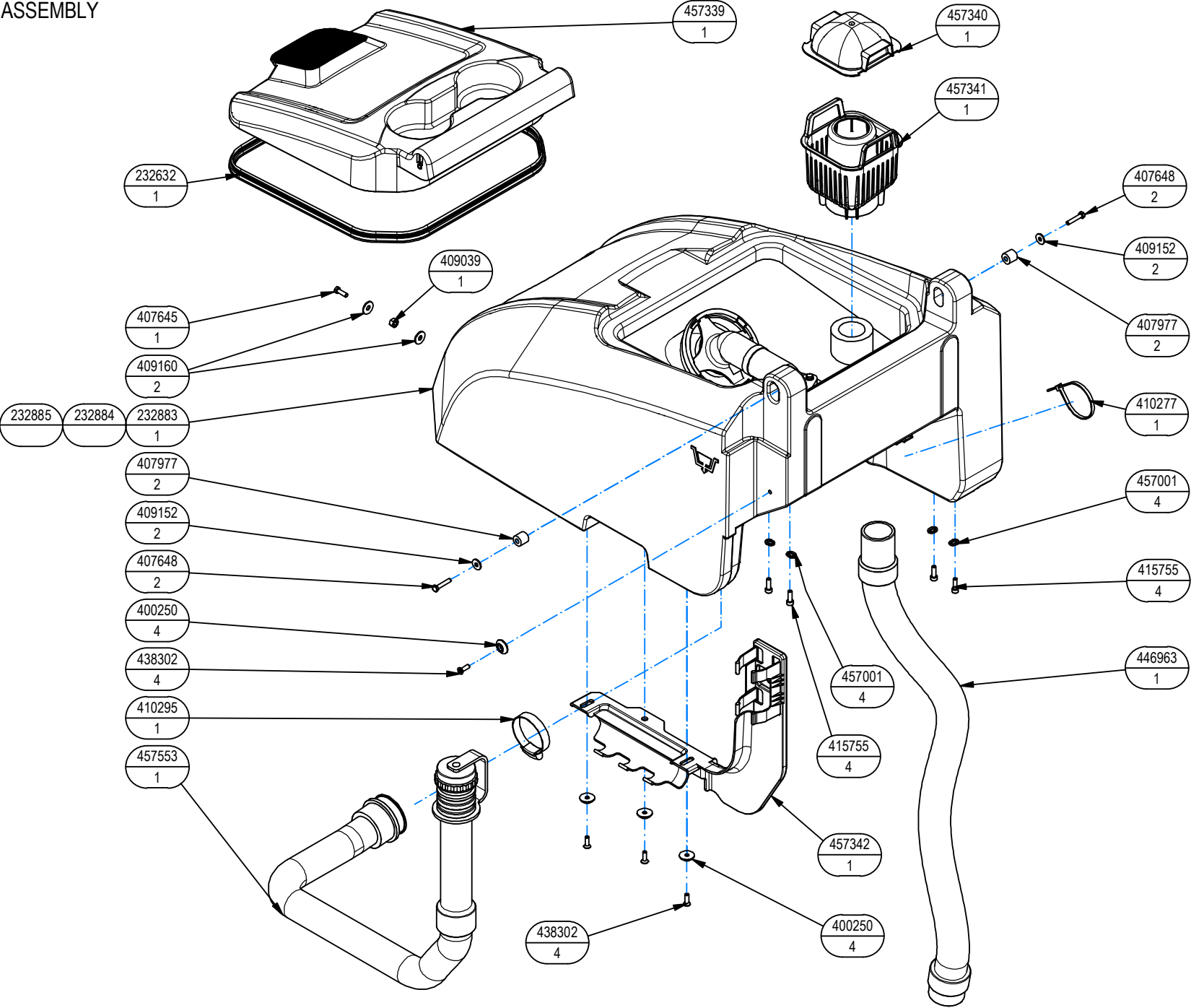
06A

## SOLUTION TANK ASSEMBLY

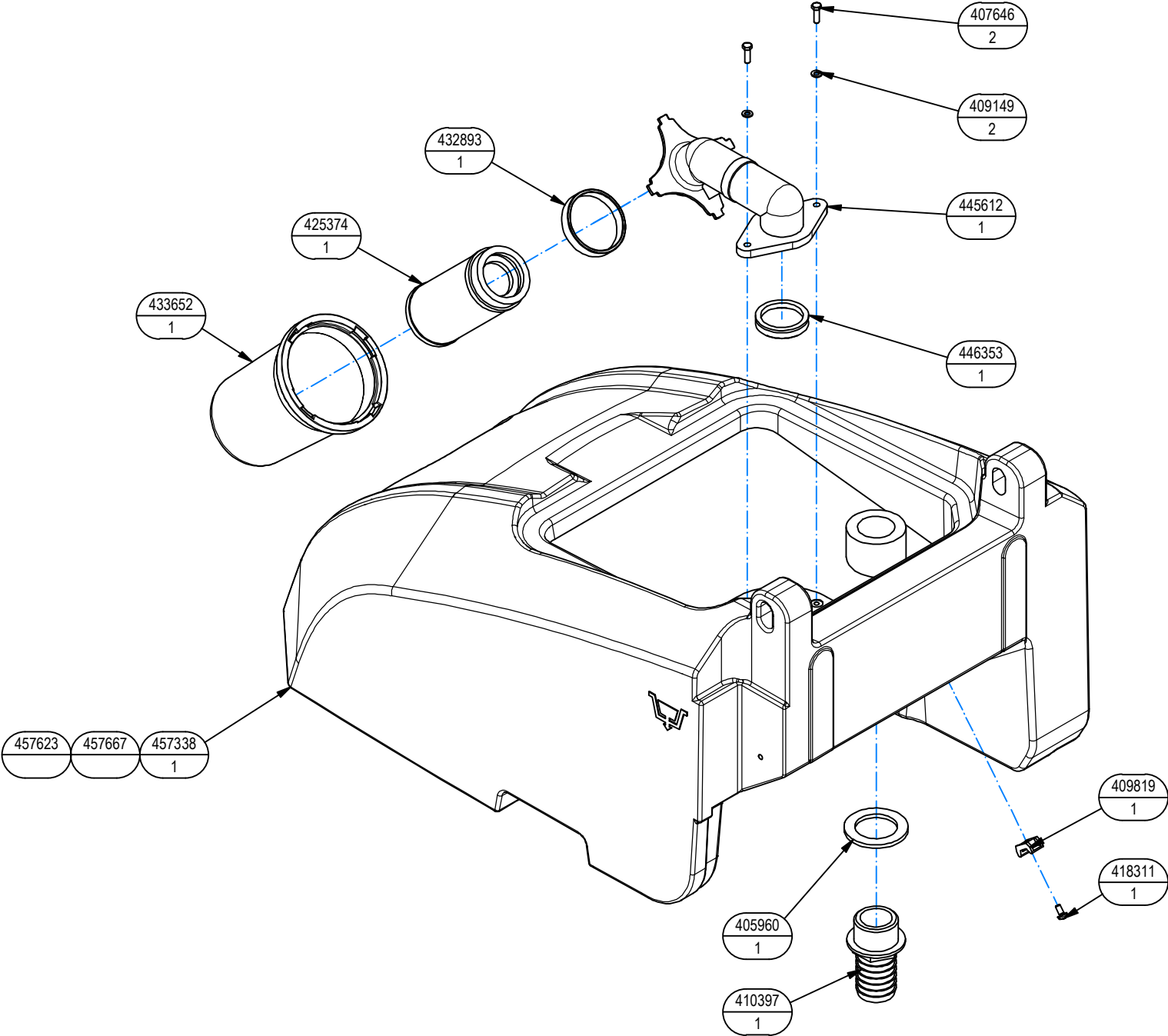
| – | TECHNICAL<br>NEWS | SERIAL<br>NUMBER | CODICE | QTÀ | DESCRIZIONE                             | DESCRIPTION                            |
|---|-------------------|------------------|--------|-----|---|--|
|   |                   |                  | 409164 | 4   | RONDELLA D11,8 UNI 1751 ZINC            | WASHER D11,8 UNI 1751 ZINC             |
|   |                   |                  | 409334 | 1   | RONDELLA DENT. D5 UNI 8842 A            | WASHER D5 UNI 8842 A                   |
|   |                   |                  | 409819 | 1   | BASETTA TC 142 PER FASCETTE             | SUPPORT TC 142                         |
|   |                   |                  | 410277 | 9   | FASCETTA PLASTICA 4.5X200               | PLASTIC TIE 4.5X200                    |
|   |                   |                  | 410332 | 1   | CORPO RUBINETTO 3/8 FORO FIL. M5        | WATER VALVE 3/8" M5                    |
|   |                   |                  | 415755 | 4   | VITE M5x16 UNI 5931 ZINC                | SCREW M5x16 UNI 5931 ZINC              |
|   |                   |                  | 416073 | 3   | BASETTA FISSACAVO BIANCA                | SUPPORT PLATE                          |
|   |                   |                  | 417989 | 2   | RONDELLA 5.5x20x1.5 ZNT DIN 9021        | WASHER 5.5x20x1.5 ZNT DIN 9021         |
|   |                   |                  | 418311 | 1   | VITE M5x10 UNI 7687 ZINC.               | SCREW M5x10 UNI 7687 ZINC.             |
|   |                   |                  | 434159 | 2   | CERNIERA ELESА FORI ASOLATI - CFA-SL-HV | HINGE CFA-SL-HV                        |
|   |                   |                  | 441027 | 3   | VITE AUTOF. D.3x10 UNI 9707 AISI        | METAL SHEET SCREW D.3x10 UNI 9707 AISI |
|   |                   |                  | 441591 | 1   | VANO BATTERIE                           | BATTERY TRAY                           |
|   |                   |                  | 441592 | 1   | VANO TANICA                             | DETERGENT TANK HOUSING                 |
|   |                   |                  | 441791 | 1   | RACCORDO RAPIDO CILINDRICO 6950 10      | FITTING 6950 10                        |
|   |                   |                  | 441792 | 1   | RACCORDO SUPER RAPIDO 7522 10 3/8       | FITTING 7522 10 3/8                    |
|   |                   |                  | 457001 | 4   | RONDELLA SPECIALE 5.3x10.1x14x2         | SPECIAL WASHER 5.3x10.1x14x2           |
|   |                   |                  | 457319 | 1   | CARTER ANTERIORE FANALI                 | HEADLIGHT SUPPORT                      |
|   |                   |                  | 457622 | 1   | SERBATOIO SOLUZIONE RICICL              | SOLUTION TANK W RECYCLE                |
|   |                   |                  | 457663 | 1   | SERBATOIO SOLUZIONE RAL 7016 AB         | SOLUTION TANK RAL7016                  |



232566 - GRUPPO SERBATOIO RECUPERO  
RECOVERY TANK ASSEMBLY



232566 - GRUPPO SERBATOIO RECUPERO  
RECOVERY TANK ASSEMBLY



## 232566 - GRUPPO SERBATOIO RECUPERO

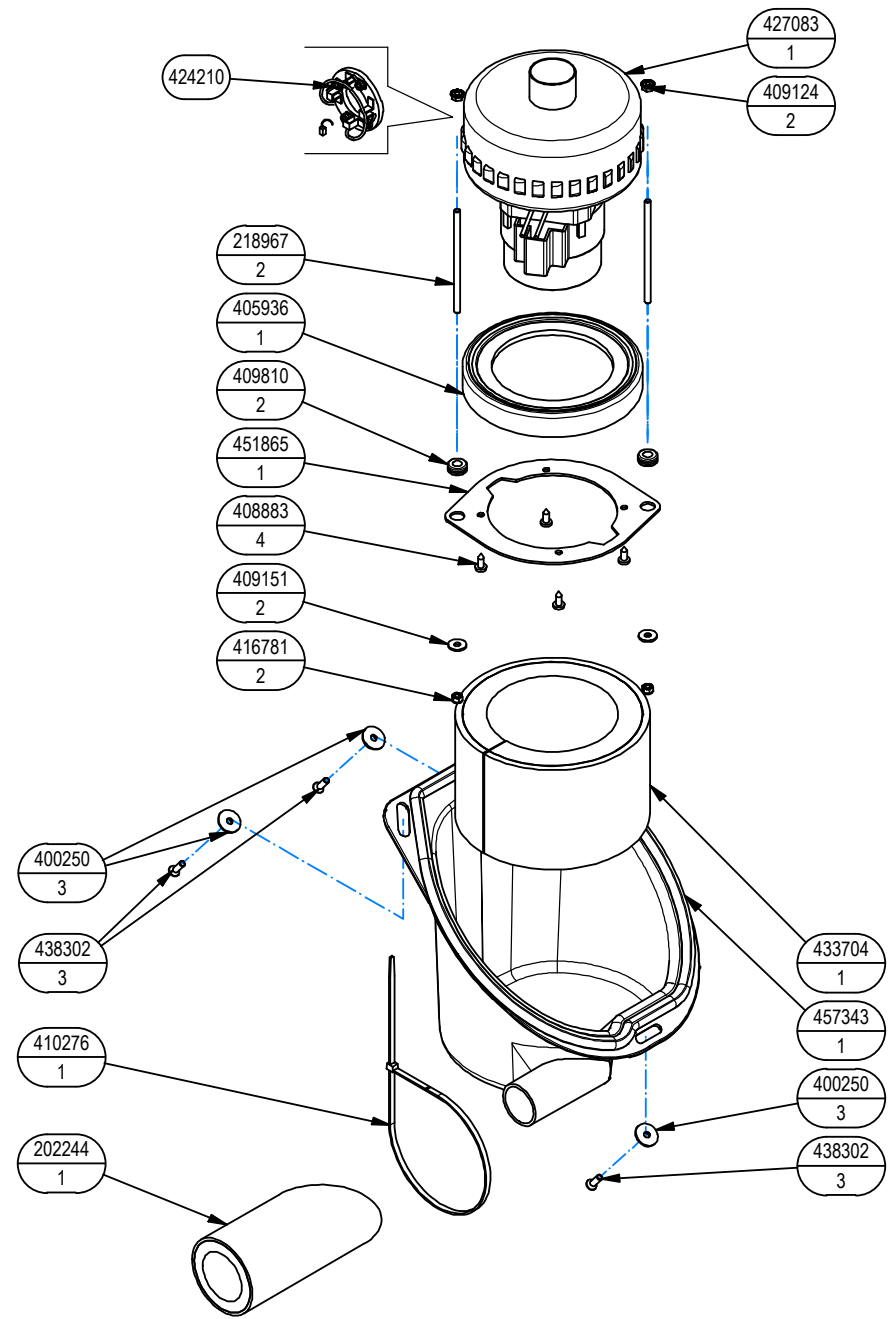
07

## RECOVERY TANK ASSEMBLY

| -   | TECHNICAL<br>NEWS | SERIAL<br>NUMBER | CODICE | QTÀ | DESCRIZIONE                              | DESCRIPTION                              |
|-----|-------------------|------------------|--------|-----|--|--|
|     |                   |                  | 232632 | 1   | GUARNIZIONE TENUTA COPERCHIO ASP. L=1200 | RUBBER SEAL                              |
| ↓   |                   |                  | 232883 | 1   | PREM. SERBATOIO REC. RAL 5012            | RECOVERY TANK ASSEMBLY RAL 5012          |
| ↑↓  |                   |                  | 227015 | 1   | ASSIEME GALLEGGIANTE                     | FLOATER ASSEMBLY                         |
| ↑↑↓ |                   |                  | 412363 | 1   | ASSIEME FILTRO A CARTUCCIA D=60 H=130    | FILTER ASSEMBLY D=60 H=130               |
| ↑↑↑ |                   |                  | 425374 | 1   | CORPO FILTRO ASPIRAZIONE D=60            | FILTER D=60                              |
| ↑↑  |                   |                  | 432893 | 1   | FASCETTA FILTRO                          | PLASTIC TIE                              |
| ↑↑  |                   |                  | 433652 | 1   | PROTEZIONE GALLEGGIANTE D.110 x 182 MY50 | FLOAT PROTECTION D.110 x 182 MY50        |
| ↑↑  |                   |                  | 445612 | 1   | ATTACCO GALLEGGIANTE D=38                | COUPLING FLOAT D=38                      |
| ↑↑  |                   |                  | 446353 | 1   | GUARNIZIONE V-RING VA0040 H=9 NBR        | GASKET V-RING VA0040 H=9 NBR             |
| ↑   |                   |                  | 405960 | 1   | GUARNIZIONE GOMMA PER RACCORDO 410397    | GASKET 410397                            |
| ↑   |                   |                  | 407646 | 2   | VITE M5x16 UNI 5739 AISI                 | SCREW M5x16 UNI 5739 AISI                |
| ↑   |                   |                  | 409149 | 2   | RONDELLA D10 UNI 6592 AISI               | WASHER D10 UNI 6592 AISI                 |
| ↑   |                   |                  | 409819 | 1   | BASSETTA TC 142 PER FASCETTE             | SUPPORT TC 142                           |
| ↑   |                   |                  | 410397 | 1   | RACCORDO PORTAGOMMA DIRITTO D38          | FITTING                                  |
| ↑   |                   |                  | 418311 | 1   | VITE M5x10 UNI 7687 ZINC.                | SCREW M5x10 UNI 7687 ZINC.               |
| ↑   |                   |                  | 457338 | 1   | SERBATOIO RECUPERO RAL 5012              | RECOVERY TANK RAL 5012                   |
|     |                   |                  | 232884 | 1   | PREM. SERBATOIO REC. RAL 5012 AB         | RECOVERY TANK ASSEMBLY                   |
|     |                   |                  | 232885 | 1   | PREM. SERBATOIO REC. RAL 5012 RICICL     | PREASSEMBLED RECOVERY TANK W RECYCLE RAL |
|     |                   |                  | 400250 | 4   | RONDELLA D=5X20                          | SPECIAL WASHER D=5X20                    |
|     |                   |                  | 407645 | 1   | VITE M5X16 UNI 5739 ZINC                 | SCREW M5x10 UNI 7687 ZINC                |
|     |                   |                  | 407648 | 2   | VITE M5x25 UNI5739 AISI                  | SCREW M5x25 UNI5739 AISI                 |
|     |                   |                  | 407977 | 2   | DISTANZIALE D=15 d=6,5 S=14 PVC          | SPACER D=15 d=6,5 S=14 PVC               |
|     |                   |                  | 409039 | 1   | DADO M6x6 UNI 5587 ZINC                  | NUT M6x6 UNI 5587 ZINC                   |
|     |                   |                  | 409152 | 2   | RONDELLA D15 UNI 6593 AISI               | WASHER D15 UNI 6593 AISI                 |
|     |                   |                  | 409160 | 2   | RONDELLA D18 UNI 6593 ZINC               | WASHER D18 UNI 6593 ZINC                 |
|     |                   |                  | 410277 | 1   | FASCETTA PLASTICA 4.5X200                | PLASTIC TIE 4.5X200                      |
|     |                   |                  | 410295 | 1   | FASCETTA A VITE 44-56 X 12,2             | ZIP TIE 44-56 X 12,2                     |
|     |                   |                  | 415755 | 4   | VITE M5x16 UNI 5931 ZINC                 | SCREW M5x16 UNI 5931 ZINC                |
|     |                   |                  | 438302 | 4   | VITE M5x16 UNI 7688 ZINC. NERO           | SCREW M5x16 UNI 7688 BURNISHED           |
|     |                   |                  | 446963 | 1   | TUBO ESTENSIBILE 1:4 d=35 L=650          | PIPE 1:4 d=35 L=650                      |
|     |                   |                  | 457001 | 4   | RONDELLA SPECIALE 5.3x10.1x14x2          | SPECIAL WASHER 5.3x10.1x14x2             |
|     |                   |                  | 457339 | 1   | COPERCHIO SERB. RECUPERO                 | RECOVERY TANK CAP                        |
|     |                   |                  | 457340 | 1   | CUPOLA VASCHETTA                         | FILTER CAP                               |
|     |                   |                  | 457341 | 1   | VASCHETTA INFERIORE                      | FILTER                                   |
|     |                   |                  | 457342 | 1   | SUPPORTO TUBO SCARICO REC.               | SUPPORT                                  |
|     |                   |                  | 457553 | 1   | TUBO D.38x900 SPIR. MAN. D.50 CON TAPPO  | PIPE D38X900 W CAP                       |
|     |                   |                  | 457623 | 1   | SERBATOIO RECUPERO RICICL                | RECOVERY TANK W RECYCLE                  |
|     |                   |                  | 457667 | 1   | SERBATOIO RECUPERO RAL 5012 AB           | RECOVERY TANK RAL5012                    |

232934 - GRUPPO MOTORE ASPIRAZIONE  
SUCTION MOTOR ASSEMBLY

08



## 232934 - GRUPPO MOTORE ASPIRAZIONE

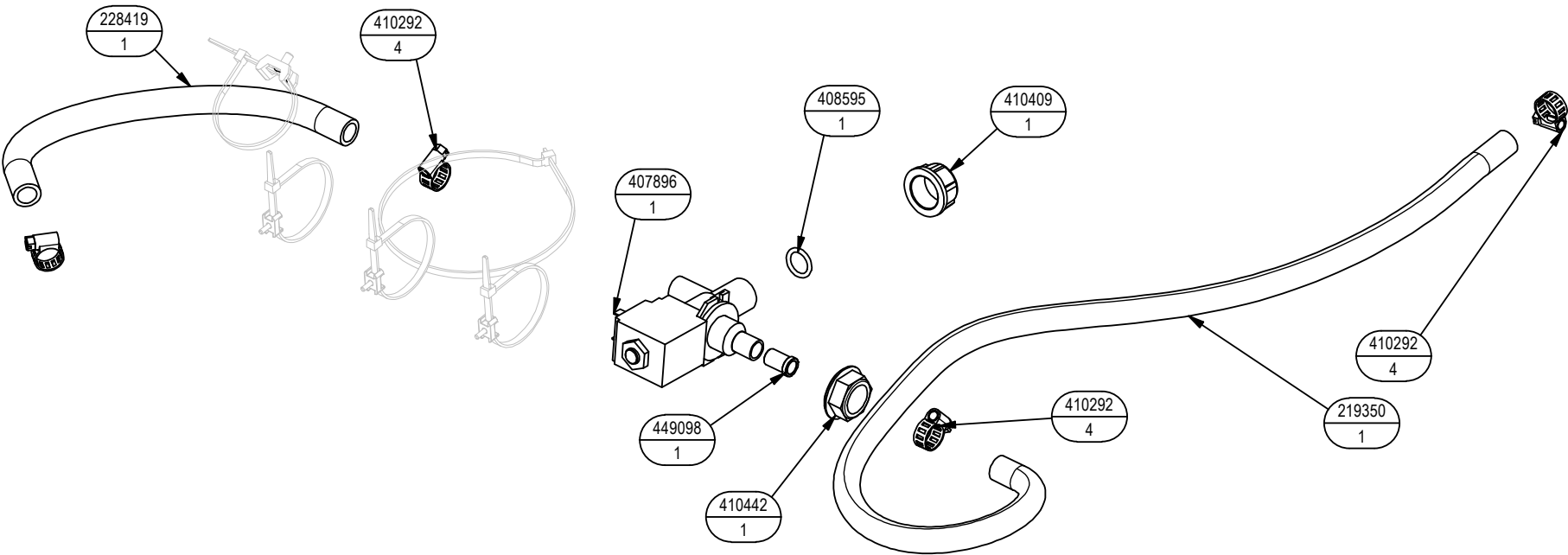
08

## SUCTION MOTOR ASSEMBLY

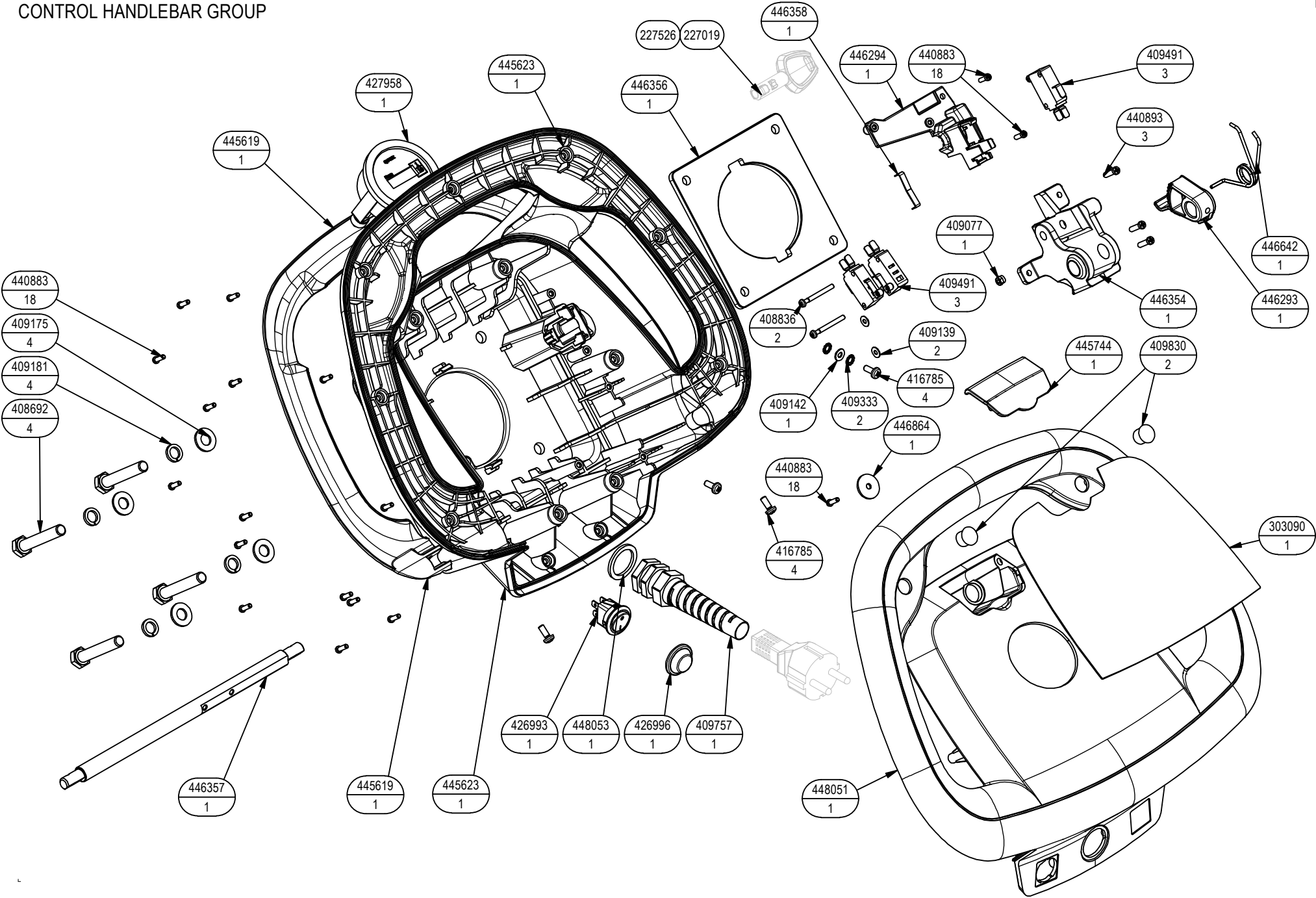
| – | TECHNICAL<br>NEWS | SERIAL<br>NUMBER | CODICE | QTÀ | DESCRIZIONE                              | DESCRIPTION                     |
|---|-------------------|------------------|--------|-----|--|---------------------------------|
|   |                   |                  | 202244 | 1   | TUBO FONOASS. DIAM.50X150 (TAGLIO INCL.) | DEADENING                       |
|   |                   |                  | 218967 | 2   | BARRA FILETTATA M5 L=102 ZINCATA         | ROD M5 L=102 ZINC               |
|   |                   |                  | 400250 | 3   | RONDELLA D=5X20                          | SPECIAL WASHER D=5X20           |
|   |                   |                  | 405936 | 1   | CUFFIA MOTORE ASPIRAZIONE                | SHROUD                          |
|   |                   |                  | 408883 | 4   | VITE D.4,8x13 UNI 6954                   | SCREW D.4,8x13 UNI 6954         |
|   |                   |                  | 409124 | 2   | DADO M5 SERPRESS                         | NUT M5 SERPRESS                 |
|   |                   |                  | 409151 | 2   | RONDELLA 5,5x15x1.5 UNI 6593 ZINC        | WASHER 5,5x15x1.5 UNI 6593 ZINC |
|   |                   |                  | 409810 | 2   | PASSAFILO DIAM. 8x12x1.5                 | GROMMET 8X12X1,5                |
|   |                   |                  | 410276 | 1   | FASCETTA PLASTICA 4.5X360                | ZIP TIE 4.5X360                 |
|   |                   |                  | 416781 | 2   | DADO M5X5 UNI 7473 ZINC                  | NUT M5X5 UNI 7473 ZINC          |
| ↓ |                   |                  | 427083 | 1   | MOT. ASP. 230V 50Hz 450W H1000 TANG 2S   | VACUUM MOTOR                    |
| ↑ |                   |                  | 424210 | 2   | SPAZZOLE MOTORE ASP. A471 (11,2X71)      | CARBON BRUSH MOTOR              |
|   |                   |                  | 433704 | 1   | FONOASSORBENTE SP= 6+20 L=410 H=100      | DEADENING SP= 6+20 L=410 H=100  |
|   |                   |                  | 438302 | 3   | VITE M5x16 UNI 7688 ZINC. NERO           | SCREW M5x16 UNI 7688 BURNISHED  |
|   |                   |                  | 451865 | 1   | PIASTRA MOTORE ASPIRAZIONE EVO-GL        | SUPPORT                         |
|   |                   |                  | 457343 | 1   | COPERCHIO MOTORE ASPIRAZIONE             | COVER                           |

232936 - GRUPPO IMPIANTO IDRICO E 230V  
WATER UNIT

| - | TECHNICAL NEWS | SERIAL NUMBER | CODICE | QTÀ | DESCRIZIONE                              | DESCRIPTION                  |
|---|----------------|---------------|--------|-----|--|------------------------------|
|   |                |               | 219350 | 1   | TUBO D=10 L=705 SPIRALATO                | HOSE D=10 L=705              |
|   |                |               | 228419 | 1   | TUBO DIAM.12X220 PVC SPIR. TRASPARENTE   | PIPE DIAM.12X220 PVC         |
|   |                |               | 407896 | 1   | ELETTROVALVOLA 1/2 230V 14W              | SOLENOID VALVE 1/2 230V 14W  |
|   |                |               | 408595 | 1   | GUARNIZIONE OR 3056                      | O-RING 3056                  |
|   |                |               | 409230 | 1   | ROSETTA 21x37x3 UNI 6592 ZINC            | WASHER M20 UNI 6592 ZINC     |
|   |                |               | 410292 | 4   | FASCETTA A VITE 11/17 ABA                | HOSE CLAMP 11/17 ABA         |
|   |                |               | 410409 | 1   | TAPPO FEMMINA 1/2" - PLASTICA            | CAP 1/2"                     |
|   |                |               | 410442 | 1   | DADO FLANGIATO 1/2"                      | FLANGE NUT 1/2"              |
|   |                |               | 449098 | 1   | BOCCOLA D=12-10,3 d=8,5 S=18 X5CrNi18-10 | BUSHING D=12-10,3 d=8,5 S=18 |



232935 - GR. COMANDO MARCIA B E 230-50  
CONTROL HANDLEBAR GROUP



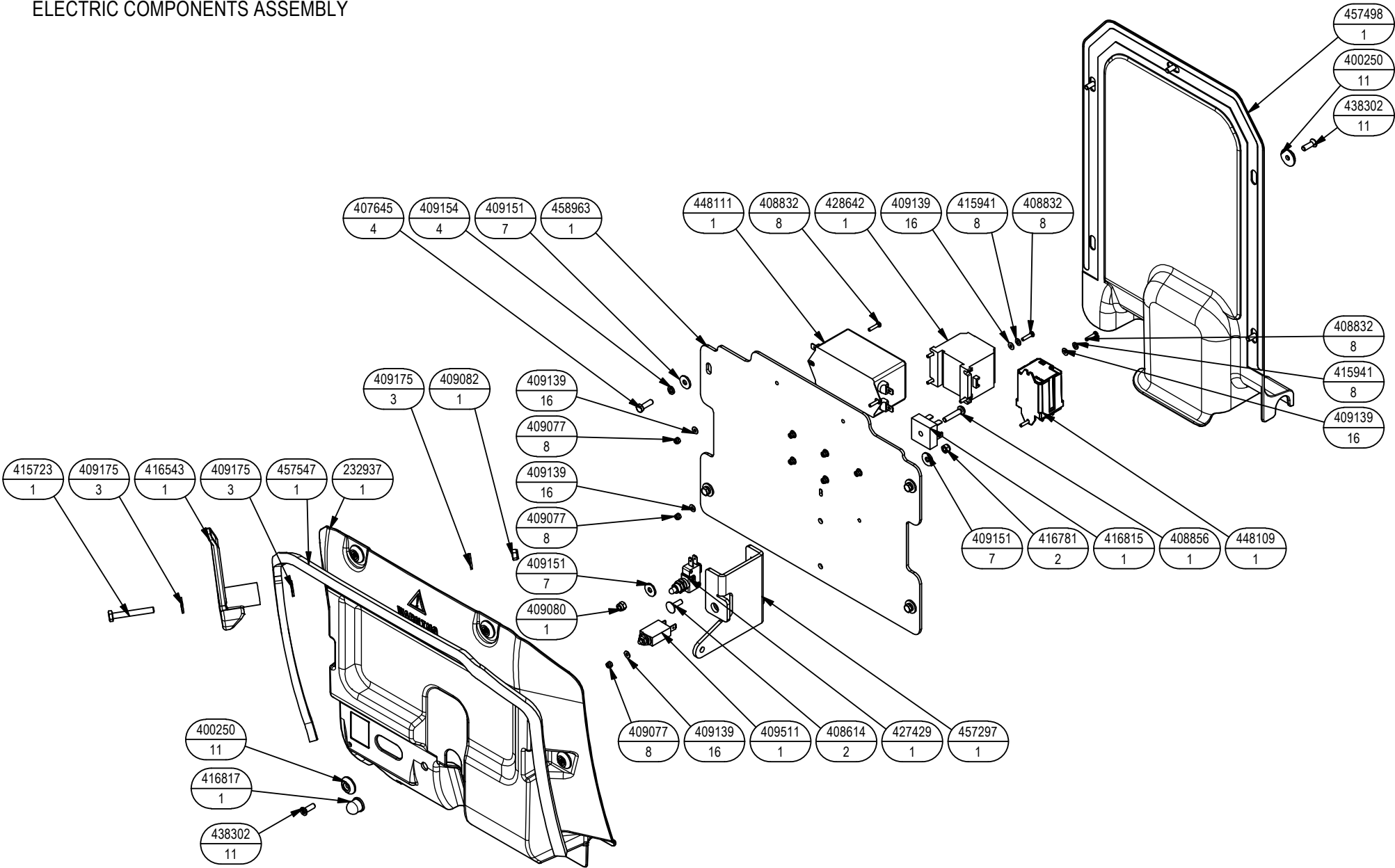
## 232935 - GR. COMANDO MARCIA B E 230-50

## CONTROL HANDLEBAR GROUP

| - | TECHNICAL<br>NEWS | SERIAL<br>NUMBER | CODICE | QTÀ | DESCRIZIONE                              | DESCRIPTION                              |
|---|-------------------|------------------|--------|-----|--|--|
|   |                   |                  | 227019 | 1   | ASSIEME CHIAVE FIMAP                     | FIMAP KEY                                |
|   |                   |                  | 227526 | 1   | ASSIEME CHIAVE NEUTRA                    | KEY                                      |
|   |                   |                  | 408692 | 4   | VITE M8X50 UNI 5739 ZINC                 | SCREW M8X50 UNI 5739 ZINC                |
|   |                   |                  | 409077 | 1   | DADO M3x4,5 UNI 7474 ZINC                | NUT M3x4,5 UNI 7474 ZINC                 |
|   |                   |                  | 409139 | 2   | RONDELLA 3x8x1 UNI 6593 ZINC             | WASHER 3x8x1 UNI 6593 ZINC               |
|   |                   |                  | 409175 | 4   | RONDELLA D17 UNI 6592 ZINC.              | WASHER D17 UNI 6592 ZINC.                |
|   |                   |                  | 409181 | 4   | RONDELLA D13 UNI 1751 ZINC               | LOCK WASHER D13 UNI 1751 ZINC            |
|   |                   |                  | 409491 | 3   | MICROINT.10A 3X22 C/ROTEL 4.8 V5C010FB3D | LIMIT SWITCH 10A 3X22 4.8 V5C010F        |
|   |                   |                  | 409830 | 2   | TAPPO A SCATTO DIAM. 11 HEYCO            | CAP D=11                                 |
|   |                   |                  | 416785 | 4   | VITE M4x10 UNI 7687 ZINC                 | SCREW M4x10 UNI 7687 ZINC                |
|   |                   |                  | 440883 | 18  | VITE UNI 9707 D.3 x 10 ZINC.             | SCREW UNI 9707 D.3 x 10 ZINC.            |
|   |                   |                  | 440893 | 3   | VITE AUTOF. D.3,5 x 14 UNI 9707-Pz-TZ ZN | METAL SHEET SCREW D.3,5 x 14 UNI 9707 ZI |
|   |                   |                  | 445619 | 1   | LEVA PRESENZA UOMO                       | DEAD MAN LEVER                           |
|   |                   |                  | 445623 | 1   | MANUBRIO INFERIORE                       | LOWER SHELL                              |
|   |                   |                  | 445744 | 1   | COPERCHIO TASTO SOS RAL 7016             | COVER RAL 7016                           |
|   |                   |                  | 446293 | 1   | CAMMA POTENZIOMETRO MANUBRIO             | CAM                                      |
|   |                   |                  | 446294 | 1   | SUPPORTO MICRO MANUBRIO                  | SUPPORT                                  |
|   |                   |                  | 446354 | 1   | TELAIO SUPPORTO POTENZIOMETRO            | SUPPORT FRAME                            |
|   |                   |                  | 446356 | 1   | PIASTRA RINFORZO MANUBRIO                | HANDLE REINFORCEMENT                     |
|   |                   |                  | 446357 | 1   | PERNO LEVA MANUBRIO                      | HANDLE LEVER PIN                         |
|   |                   |                  | 446358 | 1   | MOLLA CHIAVE MANUBRIO                    | SPRING                                   |
|   |                   |                  | 446642 | 1   | MOLLA CAMMA LEVA MANUBRIO                | SPRING                                   |
|   |                   |                  | 446864 | 1   | RONDELLA D=18 d=4 S=1,5 ZINC             | WASHER D=18 d=4 S=1,5 ZINC               |
|   |                   |                  | 427958 | 1   | CONTAORE 100-230V AC                     | HOURLY METER 100-230v AC                 |
|   |                   |                  | 303090 | 1   | ETICHETTA CRUSCOTTO E                    | DASHBOARD DECAL                          |
|   |                   |                  | 408836 | 2   | VITE M3x30 UNI 7687 ZINC                 | SCREW M3x30 UNI 7687 ZINC                |
|   |                   |                  | 448051 | 1   | MANUBRIO SUPERIORE E                     | UPPER HANDLE SHELL "E"                   |
|   |                   |                  | 409757 | 1   | PRESSACAVO PG13,5 CON GUIDA CAVO E DADO  | CABLE GLAND PG13,5                       |
|   |                   |                  | 448053 | 1   | RONDELLA D=27 d=20,5 S=2 NYLON           | WASHER D=27 d=20,5 S=2 NYLON             |
|   |                   |                  | 426996 | 1   | CAPPUCCIO PROTEZIONE INTERRU. L188- Ø24  | SWITCH PROTECTION CAP                    |
|   |                   |                  | 426993 | 1   | INT. BASCULA VERDE 13(2)A 250VAC SR-20   | SWITCH 250VAC SR-20                      |
|   |                   |                  | 409333 | 2   | RONDELLA DENT. EST. D.4 DIN 6798-A       | WASHER D.4 DIN 6798-A                    |
|   |                   |                  | 409142 | 1   | RONDELLA 4x9x0,8 UNI 6592 ZINC           | WASHER 4x9x0,8 UNI 6592 ZINC             |



232938 - GR. IMP. ELETTRICO BASE E 230V  
ELECTRIC COMPONENTS ASSEMBLY



## 232938 - GR. IMP. ELETTRICO BASE E 230V

11

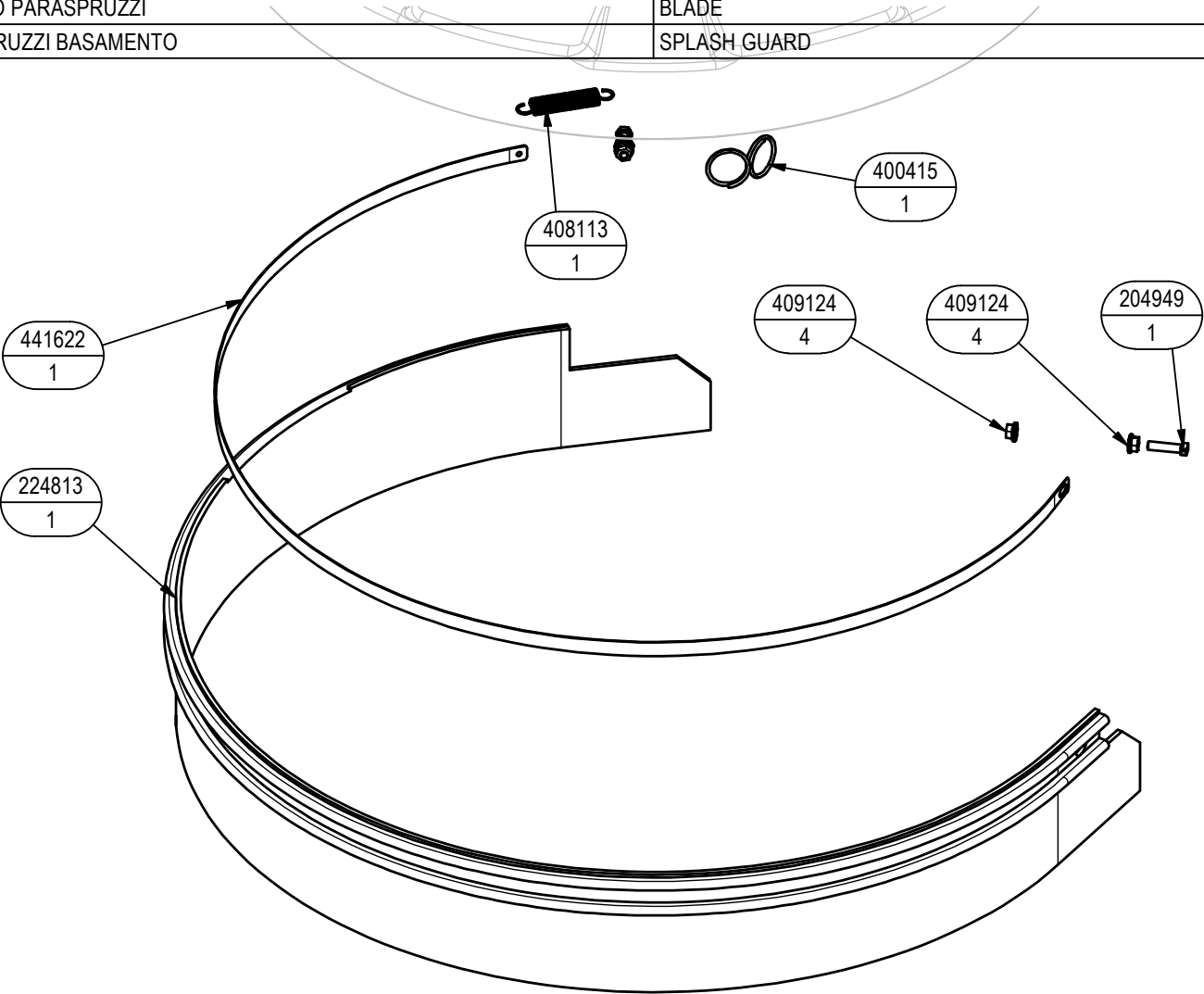
## ELECTRIC COMPONENTS ASSEMBLY

| – | TECHNICAL<br>NEWS | SERIAL<br>NUMBER | CODICE | QTÀ | DESCRIZIONE                              | DESCRIPTION                     |
|---|-------------------|------------------|--------|-----|--|---------------------------------|
|   |                   |                  | 409139 | 16  | RONDELLA 3x8x1 UNI 6593 ZINC             | WASHER 3x8x1 UNI 6593 ZINC      |
|   |                   |                  | 409077 | 8   | DADO M3x4,5 UNI 7474 ZINC                | NUT M3x4,5 UNI 7474 ZINC        |
|   |                   |                  | 415941 | 8   | RONDELLA D7,6 UNI1751 ZINC               | WASHER D7,6 UNI1751 ZINC        |
|   |                   |                  | 458963 | 1   | LAMIERA IMPIANTO ELETTRICO               | ELECTRIC PANEL                  |
|   |                   |                  | 416543 | 1   | MANIGLIA PORTACAVO                       | CORD RETAINER                   |
|   |                   |                  | 407645 | 4   | VITE M5X16 UNI 5739 ZINC                 | SCREW M5x10 UNI 7687 ZINC       |
|   |                   |                  | 408832 | 8   | VITE M3x14 UNI 7687 ZINC                 | SCREW M3x14 UNI 7687 ZINC       |
|   |                   |                  | 409151 | 7   | RONDELLA 5,5x15x1.5 UNI 6593 ZINC        | WASHER 5,5x15x1.5 UNI 6593 ZINC |
|   |                   |                  | 408614 | 2   | VITE M5x16 UNI 5732 ZINC                 | SCREW M5x16 UNI 5732 ZINC       |
|   |                   |                  | 457297 | 1   | STAFFA LEVA SOLLEVAMENTO                 | SUPPORT                         |
|   |                   |                  | 427429 | 1   | MICROINTERRUT. A PULSANTE 10A FASTON 6.3 | MICROSWITCH                     |
|   |                   |                  | 416781 | 2   | DADO M5X5 UNI 7473 ZINC                  | NUT M5X5 UNI 7473 ZINC          |
|   |                   |                  | 457498 | 1   | CARTER INTERNO                           | COVER                           |
|   |                   |                  | 232937 | 1   | CARTER IMP. ELETTRICO                    | PLASTIC COVER                   |
|   |                   |                  | 409154 | 4   | RONDELLA M5 UNI 1751 ZINC                | WASHER M5 UNI 1751 ZINC         |
|   |                   |                  | 438302 | 11  | VITE M5x16 UNI 7688 ZINC. NERO           | SCREW M5x16 UNI 7688 BURNISHED  |
|   |                   |                  | 400250 | 11  | RONDELLA D=5X20                          | SPECIAL WASHER D=5X20           |
|   |                   |                  | 409191 | 1   | RONDELLA D21 UNI 6592 ZINC               | WASHER D21 UNI 6592 ZINC        |
|   |                   |                  | 409175 | 3   | RONDELLA D17 UNI 6592 ZINC.              | WASHER D17 UNI 6592 ZINC.       |
|   |                   |                  | 415723 | 1   | VITE M6X45 UNI 5737 ZINC                 | SCREW M6X45 UNI 5737 ZINC       |
|   |                   |                  | 409082 | 1   | DADO M6 UNI 7474 ZINC                    | NUT M6 UNI 7474 ZINC            |
|   |                   |                  | 416817 | 1   | CAPPUCCIO DISGIUNTORE                    | PROTECTION CAP                  |
|   |                   |                  | 409511 | 1   | DISGIUNTORE DI SICUREZZA 3,5A            | THERMAL CIRCUIT BREAKER 3,5A    |
|   |                   |                  | 448111 | 1   | FILTRO RETE 06S42E15547433248.21.7105C9Q | ELECTRIC FILTER                 |
|   |                   |                  | 448109 | 1   | RELE' FINDER 628282300300                | CONTACTOR 628282300300          |
|   |                   |                  | 416815 | 1   | PONTE DIODO MOTORE 1500 UHS              | RECTIFIER BRIDGE                |
|   |                   |                  | 428642 | 1   | TELERUTTORE 220V 50/60Hz QUAD. BARRA DIN | CONTACTOR 220V 50/60Hz          |
|   |                   |                  | 409080 | 1   | DADO M5x7 AUTOBL. UNI 7473 ZINC          | NYLOCK M5x7 UNI 7473 ZINC       |
|   |                   |                  | 408856 | 1   | VITE M5x25 UNI 7687 ZINC                 | SCREW M5x25 UNI 7687 ZINC       |
|   |                   |                  | 457547 | 1   | GUARNIZ. EPDM 8X10 L=960 (POR304/B/OPC)  | GASKET EPDM 8X10 L=960          |

232716 KIT PARASPR. EMX BASAM. 50 (20IN)

KIT SPLASH GUARD 50 (20IN)

| - | TECHNICAL NEWS | SERIAL NUMBER | CODICE | QTÀ | DESCRIZIONE                 | DESCRIPTION               |
|---|----------------|---------------|--------|-----|-----------------------------|---------------------------|
|   |                |               | 204949 | 1   | VITE M5x20 AISI SPECIALE    | SCREW M5x20 AISI          |
|   |                |               | 409124 | 4   | DADO M5 SERPRESS            | NUT M5 SERPRESS           |
|   |                |               | 407647 | 1   | VITE M5x20 TE UNI 5739 ZINC | SCREW M5X20 UNI 5739 ZINC |
|   |                |               | 408113 | 1   | MOLLA 10x1,1x55             | SPRING 10x1,1x55          |
|   |                |               | 400415 | 1   | ANELLO AGGANCIO MOLLA       | RING                      |
|   |                |               | 441622 | 1   | LISTELLO PARASPRUZZI        | BLADE                     |
|   |                |               | 224813 | 1   | PARASPRUZZI BASAMENTO       | SPLASH GUARD              |



459308

428291

447123

**457293**

**445602**

437448

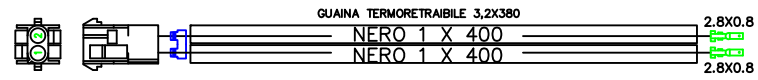
441113

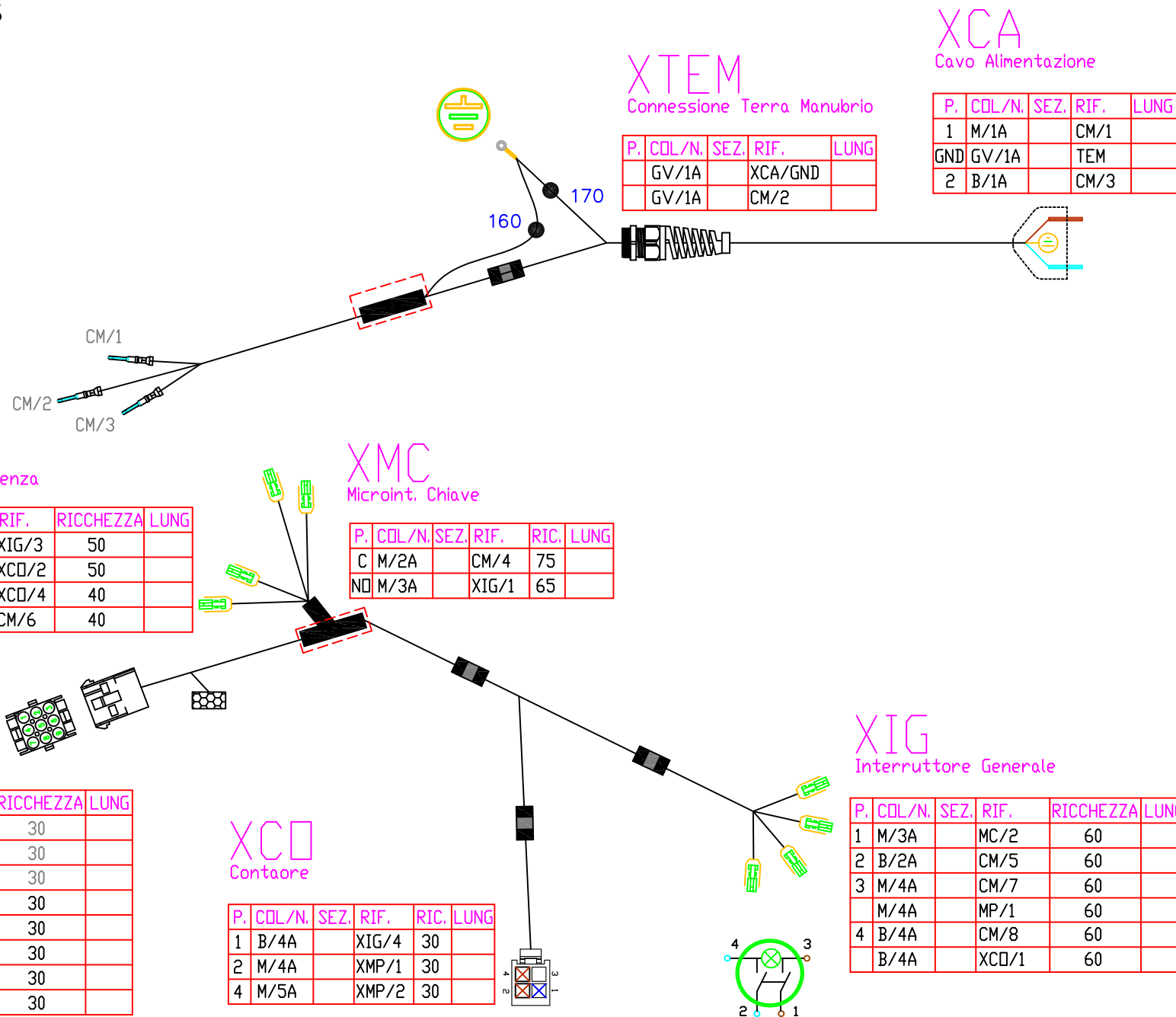
**TABELLA CAVI ELETTRICI**  
**ELECTRICAL CABLES TABLE**  
**TABLEAU DES CABLES ELECTRIQUES**  
**TABLA DE CABLES ELÉCTRICOS**



LINEA CAVI MANUBRIO INFERIORE  
LOWER HANDLEBAR CABLE LINE

Cod: 444945  
Doc: 10066230 AA

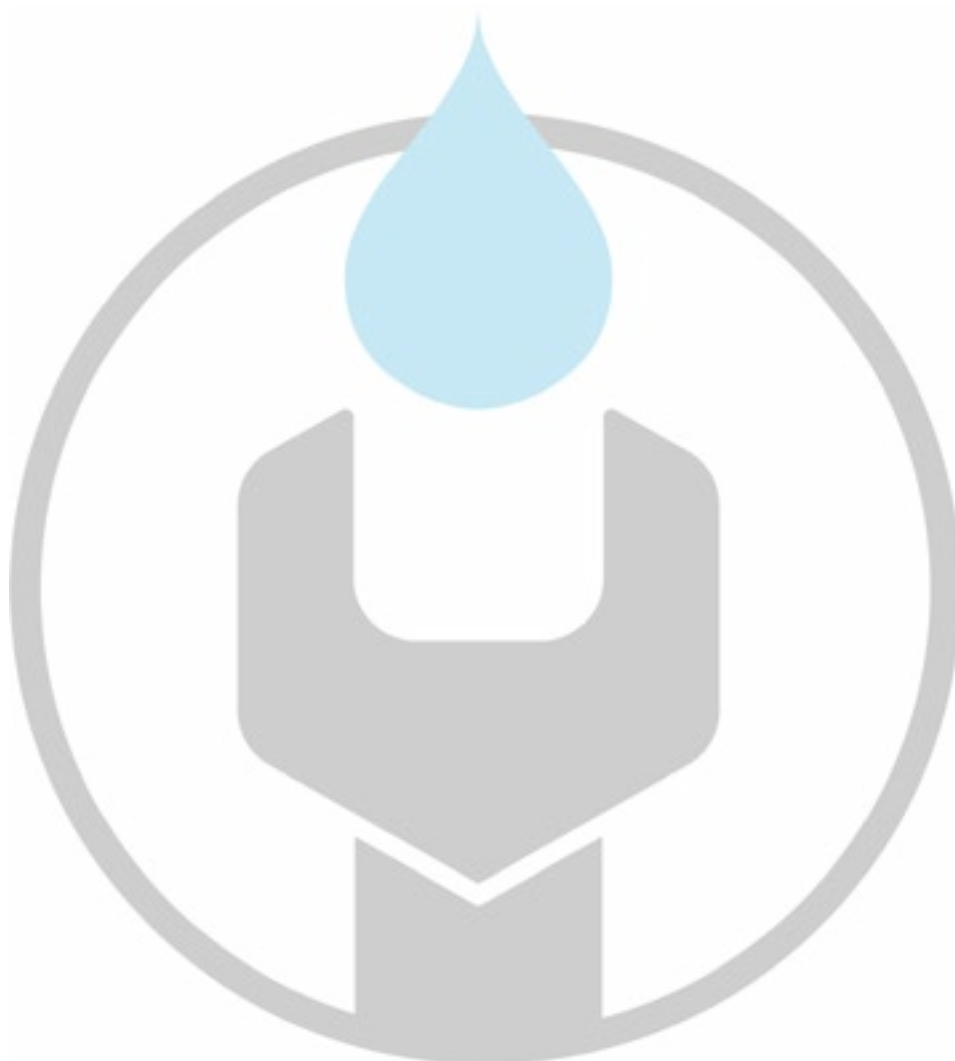


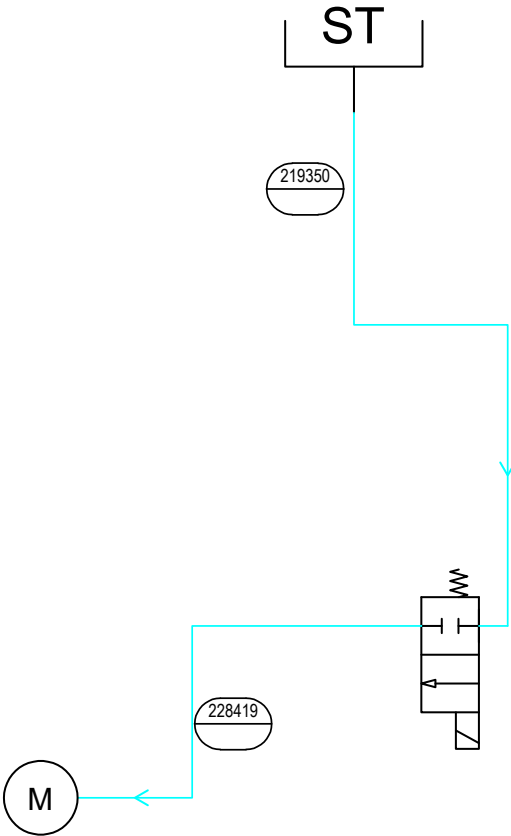






# TABELLA IMPIANTO IDRICO WATER SYSTEM TABLE





|  |                  |  |                |  |                           |  |                     |
|--|------------------|--|----------------|--|---------------------------|--|---------------------|
|  | motoriduttore    |  | lancia pistola |  | pressostato di minima     |  | serbatoio soluzione |
|  | gear motor       |  | water gun      |  | min pressure switch       |  | solution tank       |
|  | sistema AQUAE(R) |  | tubo spiralato |  | pressostato di massima    |  |                     |
|  | AQUAE system     |  | hose           |  | max pressure switch       |  |                     |
|  | pompa            |  | elettrovalvola |  | tanica detergente chimico |  |                     |
|  | pomp             |  | solenoid valve |  | chemical tank             |  |                     |

[illegible]



**FIMAP S.p.A.**

✉ Via Invalidi del Lavoro, 1

37059 S. Maria di Zevio (VR)

Italia

☎ +39 045 6060491 - 📠 +39 045 6060440

@ [service@fimap.com](mailto:service@fimap.com) 🌐 [www.fimap.com](http://www.fimap.com)