

Owner Instructions

Original Instructions
CAUTION Read instructions before using the machine



NV - 450
NVQ - 450
NVD - 450
NVDQ - 450
NV - 570
NVQ - 570
NVD - 570
NVDQ - 570
NV - 750
NVQ - 750
NVD - 750
NVDQ - 750
NV - 900
NVQ - 900
NVD - 900
NVDQ - 900



www.numatic.com



607164 Kit BA2



NV 570 - NVQ 570 NVD 570 - NVDQ 570

1



2



3



628427
4 x Castor

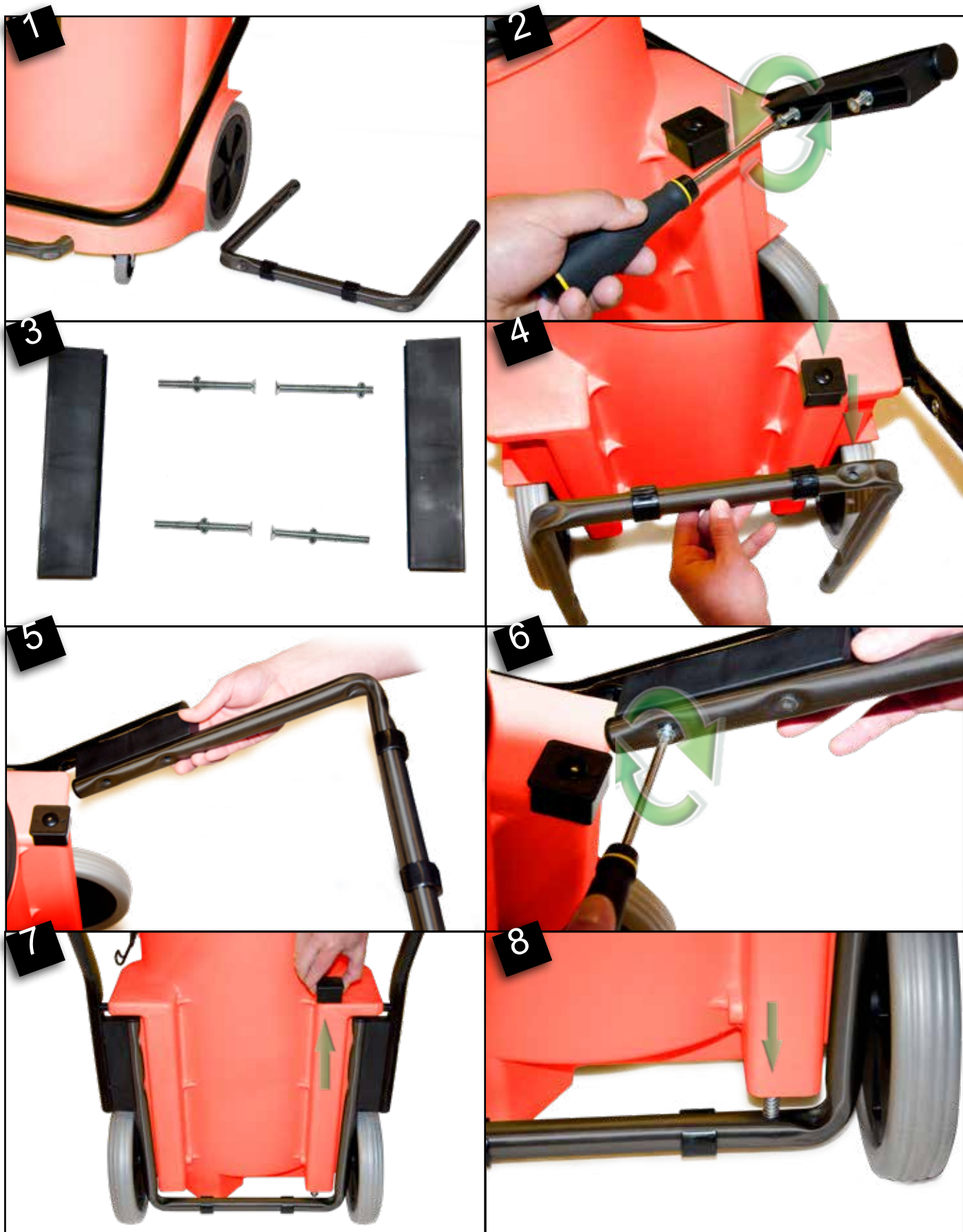


4

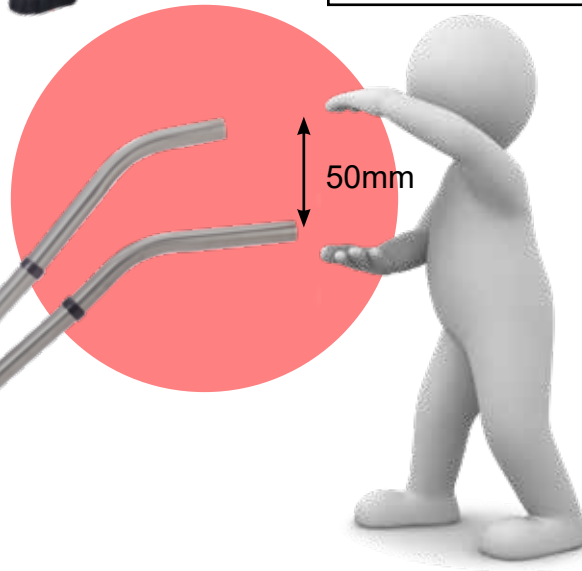
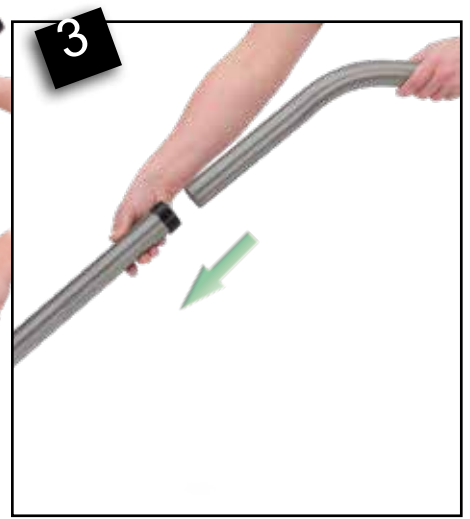


Handle Fitting Instructions

NV 900 - NVQ 900 - NVD 900 - NVDQ 900



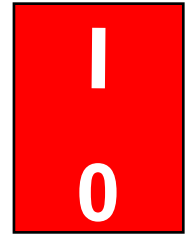
Assembling the Machine



NV 570

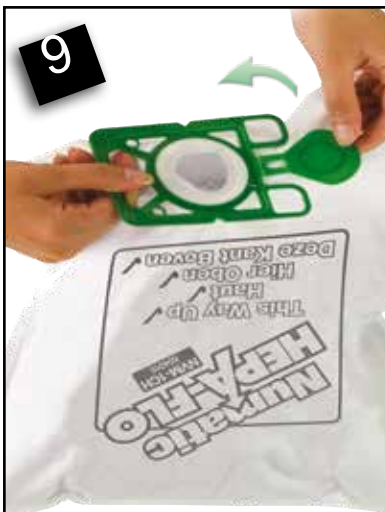


Switch Identification



Fitting the Filter Bag





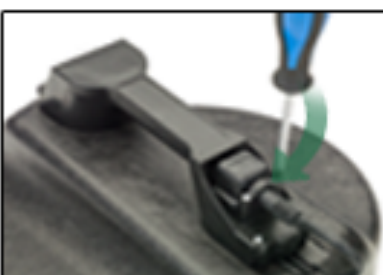
17



18



NuCable



About the Machine

Numatic
International Ltd.
CHARD, ENGLAND, TA202GB

NVD 570-2

220-240V~
50-60Hz

2400W MAX
2000W IEC

13.8Kg






094300118

Machine Description

Voltage / Frequency

Power Rating

Weight (Ready to use)

WEEE Logo

CE Mark

Class 2 Symbol

Yr / Wk / Serial Number

Safety Critical Components

Mains lead

HO5VV-F 10m x 2 x 1.00mm²
HO5VV-F 10m x 2 x 2.50mm²

Filter Bag

NVM-3 BH >pp< construction 99.6%@0.3µm
NVM-4 BH >pp< construction 99.6%@0.3µm

Filter Permatex

NVM 604116 >pp< construction 96.0%@0.3µm

WEEE Legislation (Waste, Electrical and Electronic Equipment)

Vacuum cleaner, accessories and packaging should be sorted for environmental-friendly recycling.

Only for EU countries:

Do not dispose of Vacuum cleaner into household waste!

According to the European Directive 2002/96/EC on waste electrical and electronic equipment and its incorporation into national law.

Vacuum cleaners that are no longer suitable for use must be separately collected and sent for recovery in an environmental-friendly manner.



PPE
(Personal protective equipment) that may be required for certain operations.

			
Ear Protection	Safety Footwear	Head Protection	Safety Gloves
			
Dust/Allergens Protection	Eye Protection	Protective Clothing	Hi-Vis Jacket



Caution floorsign

Note:
A risk assessment should be conducted to determine which PPE should be worn.

Information for DRY USE Vacuum Cleaners

Warning

Ensure you read the instruction manual before using the machine.

Operators shall be adequately instructed on the use of these machines, as with all electrical equipment, care and attention must be exercised at all times during use, you must also make certain that routine and preventative maintenance is carried out periodically to ensure safe operation.

Failure to carry out maintenance as necessary, including the replacement of parts to the correct standard could render this equipment unsafe and the manufacturer can accept no responsibility in this respect.

You must disconnect the machine from the mains by removing the plug from the supply socket BEFORE cleaning or maintenance and when replacing parts or converting the machine to another function.

This appliance is intended to be assembled, cleaned and maintained by an adult.

This machine is not suitable for the collection of biological hazards, hazardous or explosive dusts. Contact your local distributor if you require a machine capable of performing these tasks.

This machine is not to be used by children or persons with reduced physical, sensory or mental capabilities, or lack of experience or knowledge.

You must not allow the supply cord to come into contact with rotating brushes (if fitted).

Only use the socket outlet on the machine for purposes specified in the instructions (where fitted).

This machine is not a toy; children shall not play with this machine.

Caution

This machine must not be stored outside, or used in wet environments, or to collect wet materials. The vacuum cleaner should be stored in a dry place and is for indoor use only.

You must ensure that the filtration system fitted to the machine is suitable for the material being collected.

Notes

This product complies with the requirements of clause 20 of IEC/EN 60335-2-69 Stability and Mechanical Hazards.

This machine is suitable for commercial use, for example in hotels, schools, hospitals, factories, shops and offices for other than normal housekeeping purposes.

If the vacuum cleaner stops working, remove the plug from the wall before investigating where the fault lies.

If the vacuum cleaner has a blockage, switch off, remove the plug from the socket outlet, and inspect the floor tool, wands and hose for debris. If the floor tool, wands and hose are clear, replace the dust bag and clean the filter.

The vacuum cleaner should be inspected after use for damage.

Do

- Keep your machine clean.
- Keep filters clean.
- Use filter bags, they will enhance performance and help keep machine clean.
- Use a Numatic Original filter bag under fine dust conditions.
- Keep hoses and tubes clear.
- Replace any worn or damaged parts immediately.
- Regularly examine the power cord. If damage is found such as cracking or ageing the power cord must be replaced by a qualified person using the correct Numatic original part.
- Change dust bag frequently.
- Keep diffuser filter (where fitted) clean.
- Only use the brushes provided with the machine. The use of other brushes may impair safety.

Don't

- Unreel the cable with one pull or pull on the cable to unplug the machine from the power supply.
- Use to suck up hot ashes, lighted cigarette ends or flammable gases.
- Use steam cleaners, pressure washers or immerse in water to clean the machine.
- Attempt machine maintenance or cleaning unless the power supply plug has been removed from the supply outlet.
- Use in a wet environment or to collect wet materials.
- Store your machine in wet conditions.
- Under any circumstances place foreign objects including (but not limited to) air fresheners, air freshener capsules or scented beads of any type into the top filter of the machine. Doing so can be dangerous and risk damage to the machine and may invalidate the machine warranty.

Spare Parts

NVDQ Head		NV Head	
598516	NVDQ 570 Head UK	598007	NV 570 Head European
598916	NVDQ 900 Head UK	598202	NV 450 Head Swiss
598054	NVDQ 900 Head (110V) UK	598306	NV 750 Head UK
598101	NVDQ 570 Head (110V) UK		
598329	NVDQ 900 Head South Africa		
NVQ Head		NV - NVQ Drum	
598040	NVQ 570 Head UK	500311	NV 900 Red Drum
598050	NVQ 370 Head European	500392	NV/NVQ 570 Red Drum
598125	NVQ 570 Head European	500004	NV 750 Red Drum
598156	NVQ 900 Head UK	500003	NV 450 Red Drum
598237	NVQ 570 Head (110V) UK		
Filter			
604038	Filter for 305mm Machines	604138	Filter for 356mm Machines

604017
HepaFlo
Filter bags

Pack of 10

NVM 3BH
570 Drum



604019
HepaFlo
Filter bags

Pack of 10

NVM 4BH
750/900 Drum



DATA

	Motor	AirFlo	Suction	Cleaning Range	Class
NV 450 NVQ 450 NVD 450 NVDQ 450	960W 960W 960W x 2 960W x 2	48 L/sec 48 L/sec 96 L/sec 96 L/sec	2300 mm w.g.	26.8m	II
	Capacity Dry	Size	Weight	Sound Pressure (LpA) Uncertainty (KpA)	
NV 450 NVQ 450 NVD 450 NVDQ 450	27 Ltrs	358x450x655mm	10.3 Kgs	68.9 - 67.7 dB	

	Motor	AirFlo	Suction	Cleaning Range	Class
NV 570 NVQ 570 NVD 570 NVDQ 570	960W 960W 960W x 2 960W x 2	48 L/sec 48 L/sec 96 L/sec 96 L/sec	2300 mm w.g.	26.8m	II
	Capacity Dry	Size	Weight	Sound Pressure (LpA) Uncertainty (KpA)	
NV 570 NVQ 570 NVD 570 NVDQ 570	23 Ltrs	415x415x645mm	13.8 Kgs 13.8 Kgs 16.0 Kgs 16.0 Kgs	71.7 - 69.5 dB	

	Motor	AirFlo	Suction	Cleaning Range	Class
NV 750 NVQ 750 NVD 750 NVDQ 750	960W 960W 960W x 2 960W x 2	48 L/sec 48 L/sec 96 L/sec 96 L/sec	2300 mm w.g.	26.8m	II
	Capacity Dry	Size	Weight	Sound Pressure (LpA) Uncertainty (KpA)	
NV 750 NVQ 750 NVD 750 NVDQ 750	35 Ltrs	510x510x960mm	20.6 Kgs 22.8Kgs	84.6 dB	

	Motor	AirFlo	Suction	Cleaning Range	Class
NV 900 NVQ 900 NVD 900 NVDQ 900	960W 960W 960W x 2 960W x 2	48 L/sec 48 L/sec 96 L/sec 96 L/sec	2300 mm w.g.	26.8m	II
	Capacity Dry	Size	Weight	Sound Pressure (LpA) Uncertainty (KpA)	
NV 900 NVQ 900 NVD 900 NVDQ 900	40 Ltrs	800x490x880mm	22.5 Kgs 22.5 Kgs 25.0 Kgs 25.0 Kgs	75.8 - 72.9 dB	



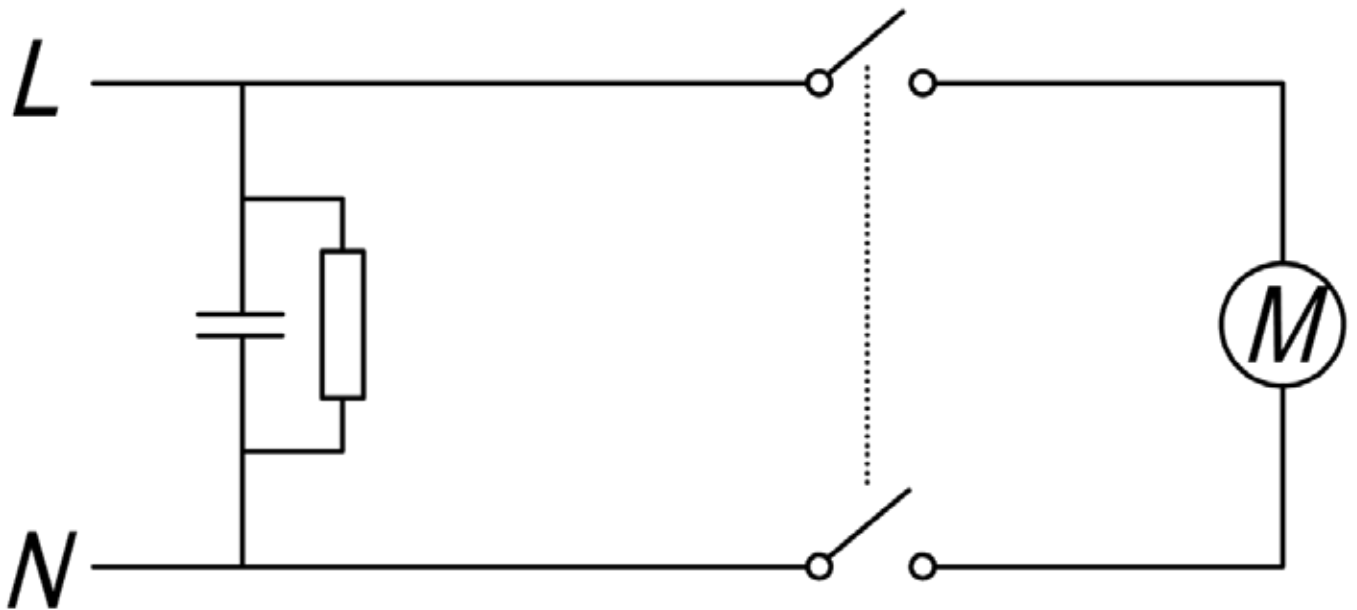
Failure to rectify any problem or in the event of a breakdown contact your Numatic dealer or the Numatic Technical helpline +44 (0)1460 269268

* *Specification* Subject to change without prior notice.

Schematic Diagram

DRW-19294

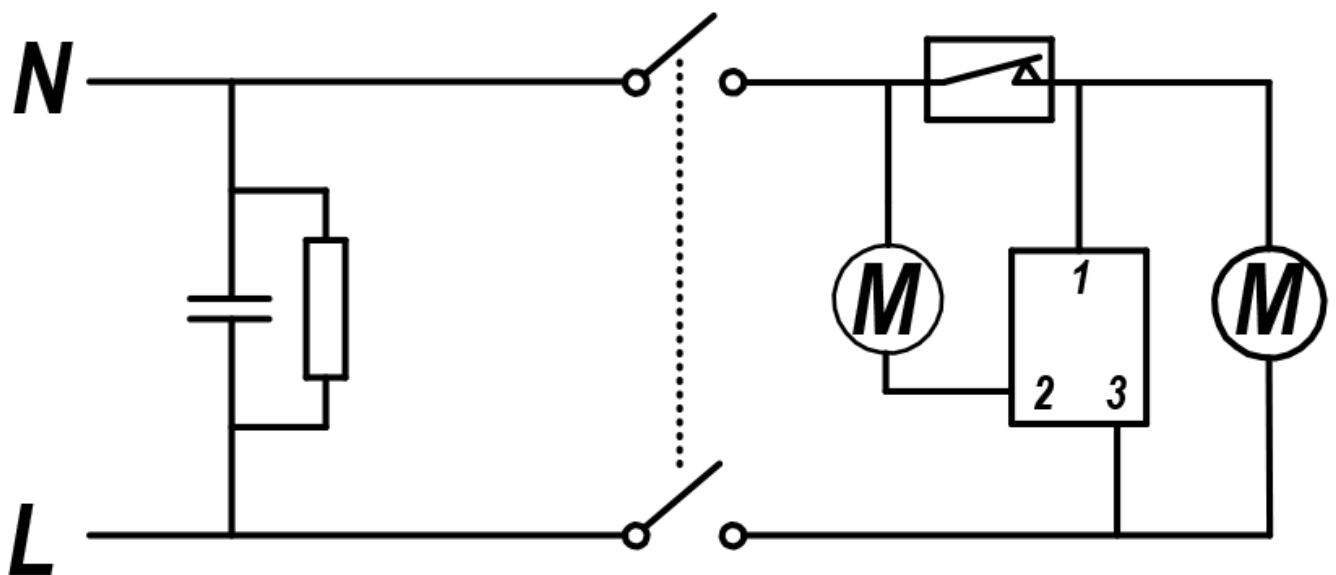
Simplex



Schematic Diagram

WD-0228

Duplex



Numatic International Warranty

Numatic International Limited warrant to the original purchaser that its products are free of defects in both material or workmanship for the period shown below:-

Homecare and Cleancare Vacuum cleaners.....	2 Years
Rotary Floor Machines.....	2 Years
Twintec Auto Scrubber Dryer.....	1 Year
Vario Ride-On Scrubber Dryer.....	1 Year / 1500 hours
Mopping, Compacts, Combi and Servocare Products.....	1 Year
Individual Accessories and Spare Parts.....	6 Months

Note: This warranty expressly excludes consumable parts such as carbon brushes, floor brushes, mops, batteries etc, that are considered replaceable from time to time during the normal working life of the machine.

Using non Numatic dustbags can be detrimental to both machine performance and life and may invalidate the Warranty.

A. The warranty period commences from the date the goods are purchased.

B. All warranty claims must be processed through the Dealer from whom the equipment was purchased. The Dealer will co-operate with the purchaser throughout the warranty claims procedure and will arrange any necessary repairs using genuine Numatic parts.

C. If the original Dealer is no longer able to fulfil his obligations please contact Numatic International Limited with full details of the claim and proof of purchase so that this may be processed without delay.

D. Any warranty claim can only relate to the specific part that is proven to be at fault and for which a replacement will be supplied but cannot be extended to constitute a claim against the complete machine.

E. Numatic International will supply the Dealer with any warranty parts required, subject to the claim being validated, after return of the faulty items in accordance with Numatic International Limited's General Conditions of Sale.

F. Claims will not be accepted if they are the result of fair wear and tear, misuse or abuse of any kind.

G. No replacement will be given unless the appropriate evidence of the validity of the claim has been provided to the satisfaction of Numatic International Limited.

H. Numatic International Limited reserve the right to charge for any unnecessary work carried out as a result of an invalid claim.

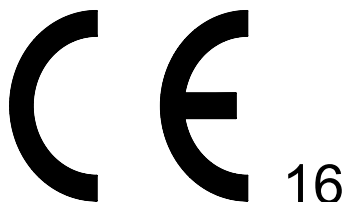
I. No variation to this warranty may be made or implied by any member of Numatic International Limited or its Dealers unless such variation is in writing and authorised by the Company



Numatic International Limited. Chard, Somerset, TA20 2GB

Telephone: 01460 68600 Fax: 01460 68458

© Numatic International Limited



EU DECLARATION OF CONFORMITY

We hereby declare under our sole responsibility that the following equipment fulfils all the relevant provisions of the following EU Directives:

Machinery Directive 2006/42/EC

EMC Directive 2014/30/EU

RoHS Directive 2011/65/EU

Machine Description: Vacuum Cleaner
Type: NV,NVD,NVQ,NVDQ series

Manufactured by: Numatic International Limited

Relevant standards upon which conformity is declared include:

IEC 60335-1:2010

IEC 60335-2-2:2009

IEC 60335-2-69:2002 +A1:2004 +A2:2007

EN 55014-1:2001 +A1:2001, +A2:2002

EN 55014-2:1997 +A1:2001 (Cat II)

EN 50366:2003 +A1:2006

A technical construction file for this equipment is retained at the manufacturer's address under the authorisation of the following signatory:

Name: Allyn Boyes

Position: Technical Manager

Signed:

Date: 20/04/2016



Numatic International Limited,
Chard, Somerset.
TA20 2GB
www.numatic.co.uk

GB

Notes

This image shows a full page of white paper with horizontal dotted lines. The lines are evenly spaced and run across the width of the page, providing a guide for handwriting or typing. There are no margins, text, or other markings on the page.



Numatic INTERNATIONAL



Numatic International Limited.
Chard, Somerset TA20 2GB ENGLAND
Tel: 01460 68600 www.numatic.co.uk



Numatic International GmbH. Fränkische Straße 15–19
D-30455 Hannover, DEUTSCHLAND
Tel: 05 11 98 42 16 0 www.numatic.de



Numatic International SAS. 13 / 17 rue du Valengelier
77500 CHELLES, FRANCE
Tel: 01 64 72 61 61 www.numatic.fr



BeNeLux Distribution, Numatic International BV
Postbus 101, 2400 AC Alphen aan den Rijn, NEDERLAND
Tel: 0172 467 999 www.numatic.nl



Numatic International (Pty.) Ltd.
16th & Pharmaceutical Roads, Midrand, Gauteng,
SOUTH AFRICA 1685
Tel: 0861 686 284 www.numatic.co.za



Numatic International Schweiz AG.
Sihlbruggstrasse 3A, 6340 Baar. SCHWEIZ
Tel: 0041 (0) 41 76 80 76 - 0 www.numatic.ch



Numatic International ULDA. Centro de Negócios da Maia,
Rua Albino José Domingues, 581, 4470 – 034 Maia PORTUGAL
Tel: +351 220 047 700 www.numatic.pt



Numatic International SLU. C/ La Forja, 41, 08840 Viladecans
(Barcelona), Spain
Tel: +34 93 647 22 22 www.numatic.es

Specification subject to change without prior notice
www.numatic.co.uk © Numatic International Limited