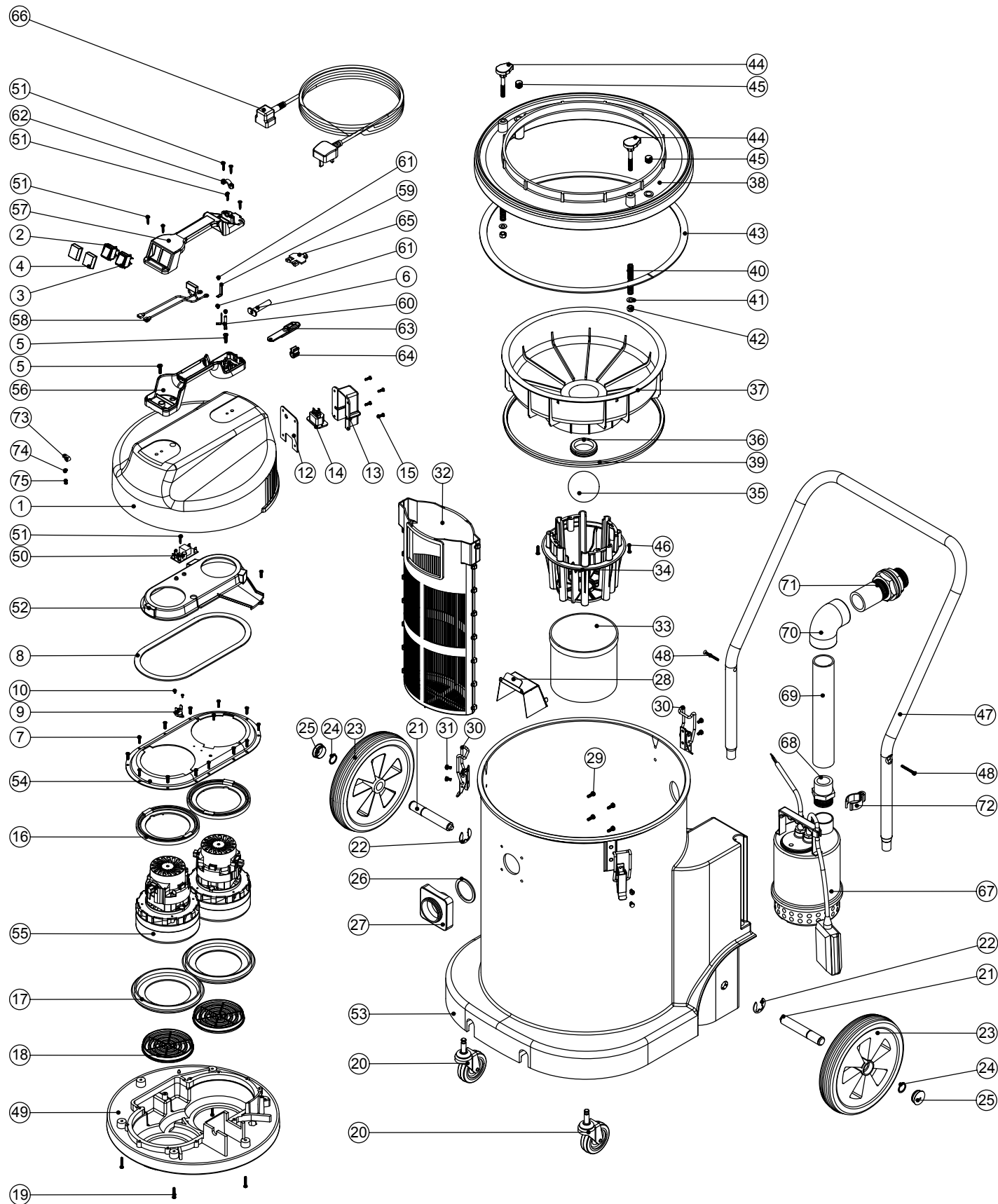


Numatic International Spare Parts

Model No: WVD1800AP-2 EXPLODED DRAWING

234297
DRAWING: EXP-0728 ISS:A01
06/01/2004



Numatic International Spare Parts

Model No: WVD1800AP-2 EXPLODED DRAWING

| POS: | ITEM NO: | DESCRIPTION: | COMMENTS: |
|------|----------|--|-------------------|
| 1 | 301092 | PROCESSED HEAD TOP | |
| 2 | 220843 | BLUE ROCKER SWITCH | |
| 3 | 220582 | GREEN ROCKER SWITCH | |
| 4 | 220238 | SWITCH BOOT | |
| 5 | 219546 | M5 X 20MM LONG POZI PAN SEMS SCREW | |
| 6 | 220132 | STRESS RELIEF SLEEVE | |
| 7 | 219370 | No8 X 5/8 INCH LONG PLASTITE STAINLESS STEEL SCREW | |
| 8 | 202012 | GASKET | |
| 9 | 220532 | THERMOSTAT | |
| 10 | 219491 | M5 X 3MM LONG POZI PAN TAPTITE SCREW | |
| 11 | 219471 | M4 X 12MM LONG POZI PAN SEMS SCREW | |
| 12 | 202082 | SOCKET COVER GASKET | |
| 13 | 206511 | SOCKET COVER | |
| 14 | 229018 | POWER TAKE OFF SOCKET | |
| 15 | 219569 | No8 X 1/2 INCH LONG POZI PAN STAINLESS STEEL TAPTITE SCREW | |
| 16 | 227925 | TOP MOTOR GASKET | |
| 17 | 202005 | MOTOR BOTTOM GASKET | |
| 18 | 206010 | FAN GUARD | |
| 19 | 219369 | No8 X 1 INCH LONG POZI PAN STAINLESS STEEL PLASTITE SCREW | |
| 20 | 204060 | 3 INCH CASTOR | |
| 21 | 206452 | STUB AXLE | |
| 22 | 219306 | E-CLIP | |
| 23 | 204028 | 10 INCH WHEEL | |
| 24 | 219308 | CIRCLIP | |
| 25 | 206131 | BLACK PLASTIC CAP | |
| 26 | 202027 | HOSE FLANGE GASKET | |
| 27 | 214001 | DIE CAST FLANGE | |
| 28 | 303482 | WATER DEFLECTOR | |
| 29 | 219045 | M5 X 16MM LONG POZI PAN SEMS SCREW | |
| 30 | 206135 | TOGGLE FASTENER | |
| 31 | 219047 | M5 X 10MM LONG POZI PAN SEMS SCREW | |
| 32 | 207110 | FILTER ASSEMBLY | |
| 33 | 207073 | GAUZE FILTER | |
| 34 | 225130 | MOULDED FLOAT CAGE | |
| 35 | 206026 | POLYPROP BALL | |
| 36 | 220235 | FLOAT GROMMET | |
| 37 | 225101 | FLOAT MOULDING | |
| 38 | 226021 | BOTTOM PLATE MOULDING | |
| 39 | 202036 | FLOAT MOULD EXTRUSION SEAL | |
| 40 | 219418 | COMPRESSION SPRING | |
| 41 | 219010 | M8 FORM A WASHER | |
| 42 | 219078 | M8 NYLON INSERT NUT | |
| 43 | 212024 | INSEAL | |
| 44 | 206242 | HOOKED KNOB | |
| 45 | 206243 | RIBBED TUBE INSERT | |
| 46 | 219568 | No8 X 3/4 INCH LONG POZI PAN STAINLESS STEEL SCREW | |
| 47 | 402100 | BLACK HANDLE | |
| 48 | 219316 | No10 X 43MM LONG POZI PAN COUNTER SUNK PLASTITE SCREW | |
| 49 | 301048 | PROCESSED BOTTOM MOTOR HOUSING | |
| 50 | 220555 | 230V DELAY START MODULE | |
| | 220556 | 115V DELAY START MODULE | |
| 51 | 219107 | No6 X 5/8 INCH LONG POZI PAN PLASTITE SCREW | |
| 52 | 227928 | 570 AIR SEPERATOR (LAMB BYPASS MOTOR DUPLEX) | |
| 53 | 300139 | WV1800AP GREY PROCESSED DRUM | |
| | 300140 | WV1800AP RED PROCESSED DRUM | |
| | 300141 | WV1800AP BLUE PROCESSED DRUM | |
| | 300142 | WV1800AP GREEN PROCESSED DRUM | |
| | 300143 | WV1800AP YELLOW PROCESSED DRUM | |
| 54 | 325526 | TOP MOTOR HOUSING (DUPLEX) | |
| 55 | 205411 | 240V 2 STAGE D.I BYPASS ACUSTEK MOTOR (BL21104)(MARKED 230V) | |
| | 205410 | 220V 2 STAGE D.I BYPASS ACUSTEK MOTOR (BL21102)(MARKED 230V) | |
| | 205409 | 120V 2 STAGE D.I BYPASS ACUSTEK MOTOR (BL21101) | |
| 56 | 320835 | HANDLE BASE MOULDING + INSERTS | |
| 57 | 227622 | HANDLE COVER 10AMP 3PIN 2 SWITCH | |
| | 227626 | HANDLE COVER HARD WIRE 2 SWITCH | HARDWIRED VERSION |
| 58 | 220142 | SUPPRESSOR ASSEMBLY | |
| | 220558 | SUPPRESSOR ASSEMBLY | |
| 59 | 206563 | EARTH CONTACT PIN | |
| 60 | 206562 | CONTACT PIN | |
| 61 | 219090 | M4 X 8MM LONG POZI PAN SEMS SCREW | |
| 62 | 227564 | PLUG LOCATION CLAMP | |
| 63 | 227636 | STRAIN RELIEF | |
| 64 | 227637 | CABLE CLIP | |
| 65 | 227631 | TERMINAL COVER & CLAMP (3 PIN) | |
| 66 | 236010 | 10.0M X 1.00MM X 3 CORE NUCABLE (UK PLUG) | |
| | 236014 | 10.0M X 1.00MM X 3 CORE NUCABLE (EURO PLUG) | |
| | 236018 | 10.0M X 1.00MM X 3 CORE NUCABLE (SWISS PLUG) | |
| | 236022 | 10.0M X 1.00MM X 3 CORE NUCABLE (SOUTH AFRICA PLUG) | |
| | 236030 | 10.0M X 1.00MM X 3 CORE NUCABLE (AUSTRALIAN PLUG) | |
| | 220911 | 12.5MT X 3CORE X 2.5MM CABLE PLUS 32AMP INDUSTRIAL PLUG | HARDWIRED VERSION |
| 67 | 225140 | SUBMERSIBLE PUMP 240V/50HZ (EBARA) | |
| | 225141 | SUBMERSIBLE PUMP 110V/50HZ (EBARA) | |
| | 225142 | SUBMERSIBLE PUMP 110V/60HZ (EBARA) | |
| | 225143 | SUBMERSIBLE PUMP 220V/60HZ (EBARA) | |
| 68 | 320897 | 1 1/4 INCH HEXAGON NIPPLE (MODIFIED) | |
| 69 | 390935 | 270MM LONG TUBE | |
| | 390935 | 270MM LONG TUBE | |
| 70 | 206547 | 1 1/2 INCH ELBOW | |
| 71 | 303547 | 1 1/2 TANK CONNECTOR MODIFICATION | |
| 72 | 320898 | HOSE CLIP (LESS RIB) | |
| 73 | 226050 | CABLE CLAMP (WHITE P CLIP) | |
| 74 | 219688 | M4 FORM A STAINLESS STEEL WASHER | |
| 75 | 219301 | No6 X 3/8 INCH LONG POZI PAN SELF TAP SCREW | |