

Orbis Duo Low Profile Base Assembly Service Parts List

Model Ref.:- 05-4218-0000

From Series: - F (Lemac Motor)

Serial Number :- From 50000

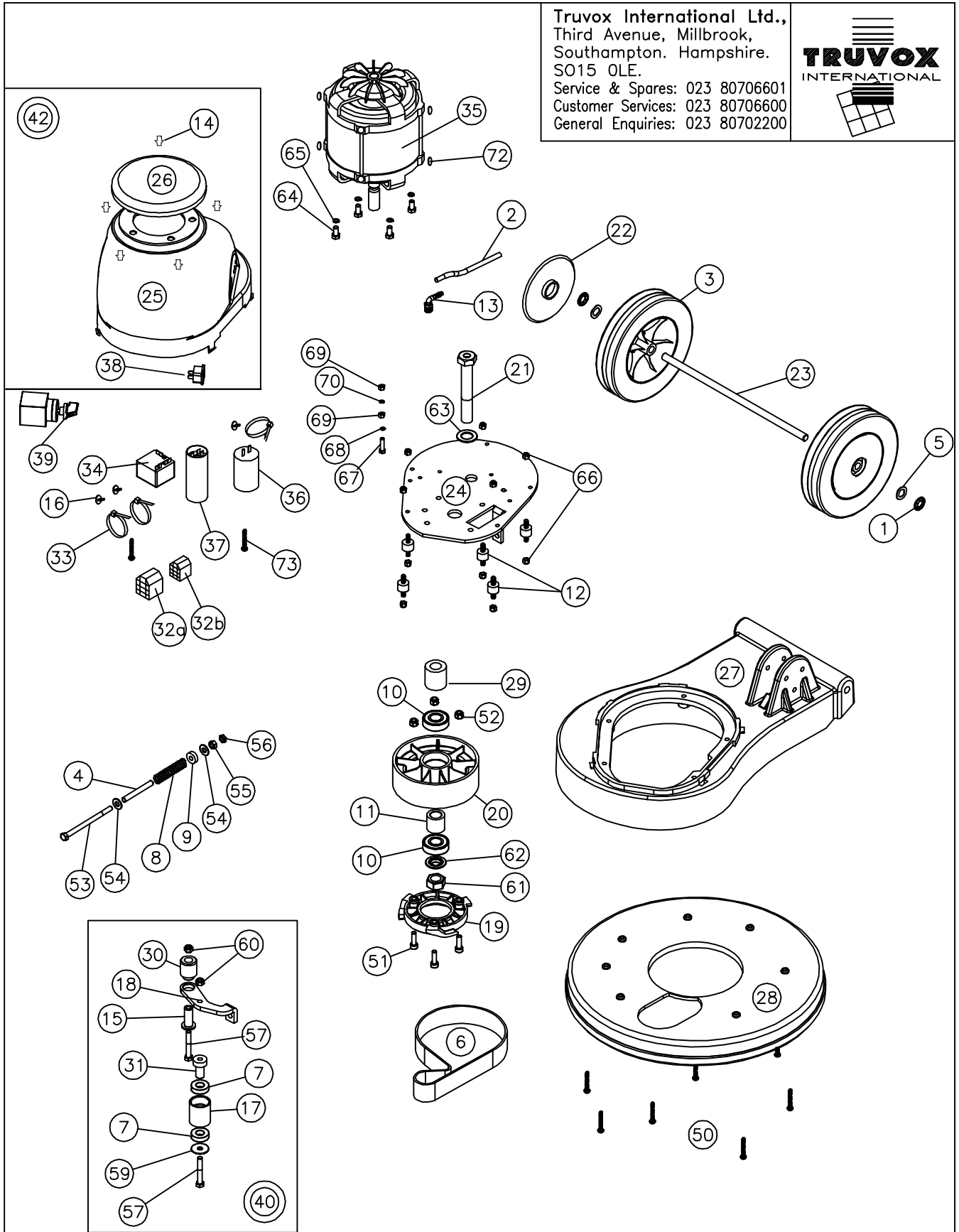
Service Parts List Issue 4 Dated 01-December-2010

Ref. Drawing 09-1021-0000 Issue B Dated 06-December-2010

Drawing Ref.	Part Number	Description	Qty
1	02-0254-0000	Starlock washer	2
2	02-0264-1000	Pipe	0.145M
3	02-3121-0000	Wheel	2
4	02-3130-1000	Adjusting Bolt Thread Protection Tube	0.06M
5	02-3185-0000	Crinkle Washer	2
6	02-4586-0000	Belt - main drive	1
7	02-3812-0000	Belt Roller Bearings 6002	2
8	02-3501-0000	Belt Tensioning Spring	1
9	03-6172-0000	Rubber Washer	1
10	02-3505-0000	Output Drive Bearing 6204DDU	2
11	03-8093-0000	Bearing Spacer	1
12	02-3507-0000	Flexible coupling - vibration damper	5
13	02-3442-0000	Barbed Elbow Fitting	1
14	03-6194-0000	Fan Cover Locking Pins	5
15	03-6582-0000	Tension Arm Pivot Bush	1
16	02-3543-0000	ORBIS Duo Capacitor Clips	3
17	03-6585-0000	Idler Pulley	1
18	03-6076-0000	Tension Arm	1
19	03-6077-0000	Engagement Hub	1
20	03-8128-0000	Pulley	1
21	03-6079-0000	Spindle	1
22	03-6080-0035	Special Cap	2
23	03-6081-0000	Axle	1
24	03-6082-0000	Motor Mount Plate	1
25	03-6727-0027	Dual Speed Motor Cover	1
26	03-6084-0035	Fan Cover	1
27	03-6101-0035	Base mold	1
28	03-6102-0027	Brush Guard 17"	1
29	03-6106-0000	Output Drive Spacer	1
30	03-6583-0000	Tension Arm Spacer	1
31	03-6584-0000	Idler Bearing Spigot	1
32a	04-3880-0000	11 Pin Recepticle	1
32b	04-3881-0000	11 Pin Connector	1
33	04-0221-0000	Cable Ties	3
34	04-3925-0000	Relay	1
35	04-3917-0000	Lamac Motor 1100W, 50Hz, 2/4 Pole Dual Speed	1
36	04-3926-0000	Capacitor Run 20 uf	1
37	04-3927-0000	Capacitor Start 160 uf	1
38	04-3235-0000	Female Socket	1
39	04-3874-0000	ORBIS Duo lo-pro Base Wiring Kit c/w Selector Switch	1
40	05-3698-0000	Tension Arm and Roller Assembly	1
41	N/A	N/A	N/A
42	05-4221-0000	ORBIS Duo Low Profile Motor Cover Assembly	1
		Fasteners	
50	02-3515-0000	Self Tappper	7

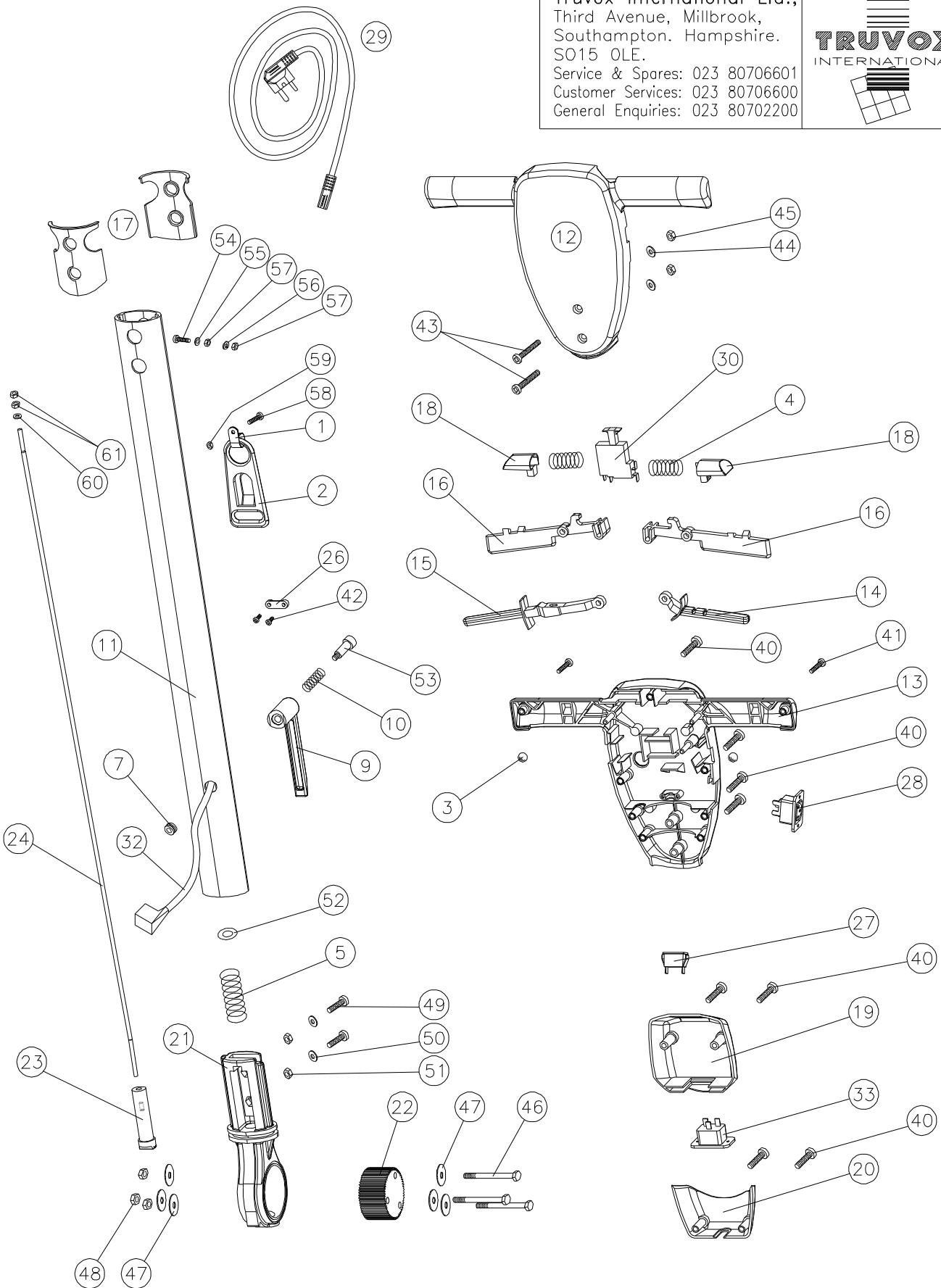
Drawing Ref.	Part Number	Description	Qty
51	00-0830-0091	Output Drive Hub/Pulley Fix M8 x 30 Socket Head Screw	3
52	00-0800-0721	Output Drive Hub/Pulley Fix M8 Nyloc	3
53	00-0899-1301	Tensioning Spring Bolt M8 x 130 Hex Head Screw	1
54	00-0800-0551	Tensioning Spring Washers Form "C" Large Diameter	2
55	00-0800-0701	Tensioning Spring Nut M8 Full Nut	1
56	00-0800-0711	Tensioning Spring Locknut M8 Lock Nut	1
57	00-0855-0121	Tension Arm Bolts M8 x 55 Hex Head Bolt	2
58	N/A	N/A	N/A
59	00-0800-0501	Belt Tension Roller Washer Form "C" Large Diameter	1
60	00-0800-0751	Bolt Securing Nut M8 Type "T" 1/2 Nyloc Nut	2
61	00-2000-0701	Output Drive Nut M20 Full Nut	1
62	00-2000-0521	Output Drive Securing Washer M20 Int Shakeproof Washer	1
63	00-2000-0501	Output Drive Washer M20 Plain Washer	2
64	00-0816-0111	Motor Mount Bolt M8 x 16 Hex Head Bolt	4
65	00-0800-0511	Motor Mount Spring Washer M8 Single Coil	4
66	00-0600-0721	Vibration Mount Nut M6 Nyloc Nut	10
67	00-0520-0111	Earth Mount on Plate M5 x 20 Hex Head Screw	2
68	00-0500-0531	Earth Mount on Plate Shakeproof M5 External Shakeproof	2
69	00-0500-0701	Earth Mount on Plate Nuts M5 Full Nut	3
70	00-0500-0511	Earth Mount on Plate Springwasher M5 Single Coil	2
71	N/A	N/A	N/A
72	02-4187-0000	Buffer Rubber 19mm Dia x 1.5mm Thk	10
73	02-3515-0000	Motor Cover Securing Screws	2

Truvox International Ltd.,
Third Avenue, Millbrook,
Southampton. Hampshire.
SO15 0LE.
Service & Spares: 023 80706601
Customer Services: 023 80706600
General Enquiries: 023 80702200



						SCALE NTS	TITLE G.A				
06.12.10	—	B	UPDATED	MC		CHECKED	PRODUCT ORBIS DUO LOW PROFILE BASE	DRAWING/PART No 09—1021—0000	A4	SHEET 1 OF 1 SHEETS	
27.08.03	—	A	NEW DRAWING	SJ		DRN SJ 27.08.03					
DATE	CRO No	ISS	REVISION RECORD	DR	CHK						

Truvox International Ltd.,
Third Avenue, Millbrook,
Southampton. Hampshire.
SO15 0LE.
Service & Spares: 023 80706601
Customer Services: 023 80706600
General Enquiries: 023 80702200



					SCALE	NTS	TITLE			
					CHECKED		G.A			
10.05.01	-	A	NEW DRAWING	CL	DRN		PRODUCT	DRAWING/PART No		SHEET 1 OF
DATE	CRO No	ISS	REVISION RECORD	DR	CHK	CML 10.5.01	ORBIS HANDLE ASSY.	09-1002-0000	A4	1 SHEETS

Orbis Handle Assembly Service Parts List

Model Ref.:- 05-3445-0000 (UK 230v) & 05-3449-0000 (Euro 230v)

Service Parts List Issue 3 Dated 28-April-2004

Ref. Drawing 09-1002-0000 Issue A Dated 10-May-2001

Drawing Ref.	Current Part Number	Description	Qty
1	02-3151-0000	P Clip	1
2	02-3152-0000	Cable Strain Relief Bracket	1
3	02-3186-0000	Ball bearing	2
4	02-3510-0000	Handle Interlock Spring	2
5	02-3511-0000	Gear dog Spring	1
6			
7	02-3520-0000	Diaphragm Grommet	1
8	02-3521-0000	13mm Spanner for ORBIS (Not Shown)	2
9	03-5403-0000	Cable winder	1
10	03-5410-0000	Cable Winder Spring	1
11	03-6085-0000	Tube - handle aluminium ext.	1
12	03-6086-0027	Handle main - front	1
13	03-6087-0027	Handle main - rear	1
14	03-6088-0035	Solution Lever	1
15	03-6089-0035	Gear lever	1
16	03-6090-0035	Trigger left and right	2
17	03-6091-0000	Handle Rubber boot	2
18	03-6092-0035	Interlock	2
19	03-6093-0027	Cord inlet box	1
20	03-6094-0027	Cord retainer	1
21	03-7831-0000	Aluminium Knuckle	1
22	03-6096-0000	Gear	1
23	03-6097-0000	Dog	1
24	03-6098-0000	Adjusting Gear Rod	1
25	03-6120-0000	Instruction Manual (Not Shown)	1
26	04-0237-0000	Cable clamp	1
27	04-0239-0000	Neon Indicator Black/Green	1
28	04-0277-0000	Shuttered Outlet Socket Black	1
29a	04-3055-0053	Supply Cord Set	1
29b	04-3055-0153	Europlug Supply Cord Set	1
30	04-3237-0000	Switch	1
31	04-3239-0000	Handle Wiring Kit (Not Shown)	1
32	04-3240-0000	Drop lead	1
33	04-3242-0000	16Amp Inlet Socket	1
		Fasteners	
40	02-3516-0000	Self Tapper (Main Handle / Cord Inlet Box)	11
41	02-3517-0000	Self Tapper (Handle Ends)	2
42	02-3518-0000	Self Tapper (Cable Clamps)	2
43	00-0655-0011	Handle Tube Fix M6 x 55 Pozi Pan Head Screw	2
44	00-0600-0521	Handle Tube Fix M6 Shakeproof	2
45	00-0600-0701	Handle Tube Fix M6 Full Nut	2
46	00-0870-0121	Handle Attachment Bolt M8 x 70 Hex Head Bolt	3
47	02-0223-0000	Handle Attachment Washer Zinc Washer 5/16" x 1 1/4"	6
48	00-0800-0751	Handle Attachment Nut M8 Type "T" 1/2 Nyloc Nut	3
49	00-0816-0111	Knuckle Bolt M8 x 16 Hex Head	2
50	00-0800-0501	Knuckle Washer M8 "A" Form Washer	2
51	00-0800-0731	Knuckle Nut M8 Binx Nut	2
52	00-1020-0501	Knuckle Spring Spacer Washer M10 Washer	1
53	02-3523-0000	New Cable Winder Bolt Socket Shoulder Bolt M6 x 8 x 40	1
54	00-0520-0111	Earth Mount on Handle M5 x 20 Hex Head	1
55	00-0500-0531	Earth Mount on Handle Serrated Washer M5 External	1
56	00-0500-0511	Earth Mount on Handle Spring Washer M5 Single Coil	1
57	00-0500-0701	Earth Mount on Handle Fixing Nuts M5 Full Nut	2
58	00-0520-0111	Cable Restraint Bolt M5 x 20 Hex Head Screw	1
59	00-0500-0701	Cable Restraint Nut M5 Full Nut	1
60	00-0500-0501	Gear Rod Washer M5 Washer	1
61	00-0500-0701	Gear Rod Nuts M5 Full Nut	2