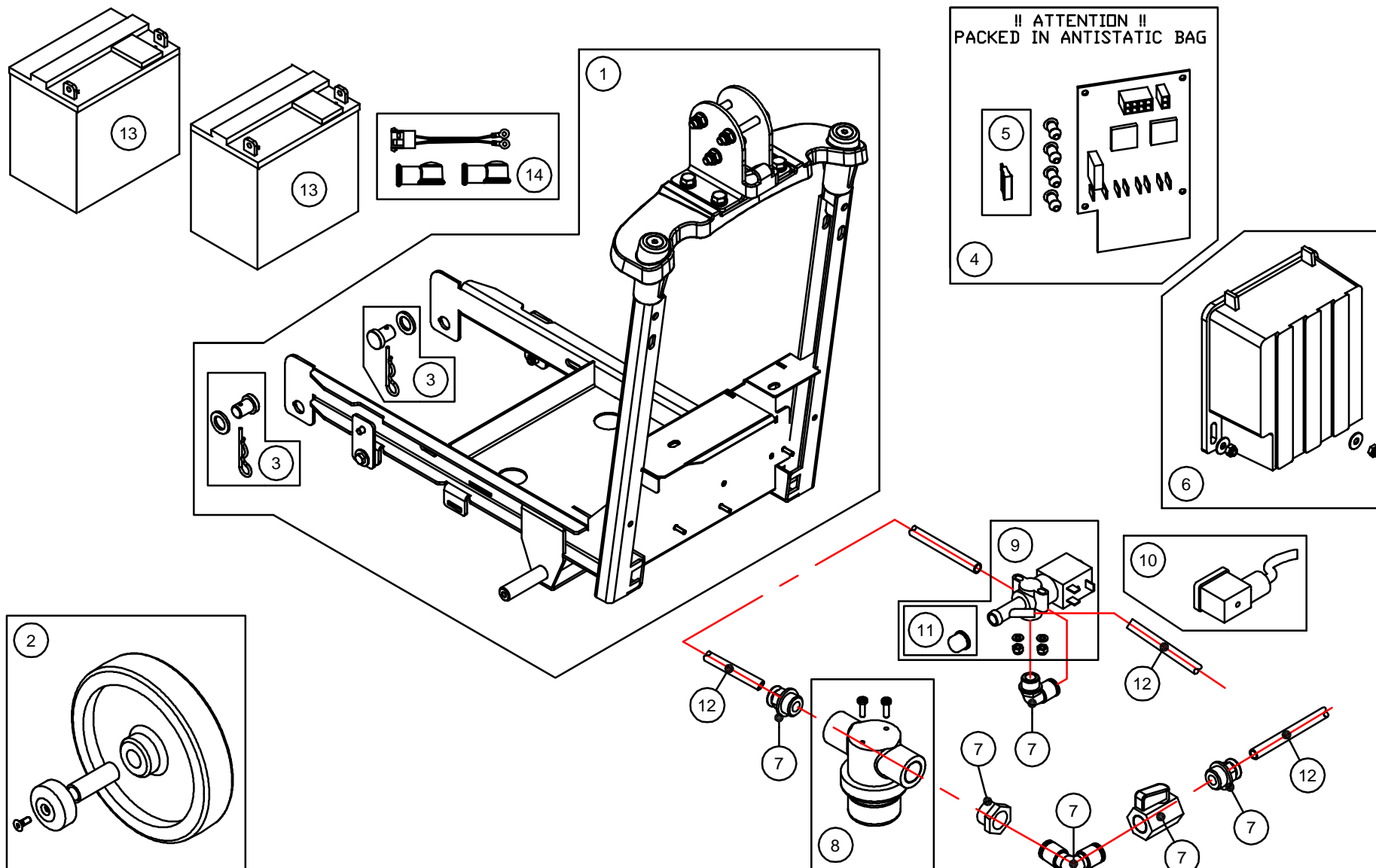


Tacony CFC		Orbis Scrubber Drier		
MACHINE: OBS38130		Part Reference: CHASSIS ASSEMBLY		
REF. DWG. #: 09-1125-0000 SHEET 1				
SERIES: A				
REVISION	ECN#	DESCRIPTION OF CHANGE	MOD. BY	DATE
1	N/A	ORIGINAL ISSUE		27-09-2010
Drawing Ref. No.	Kit No.	Part Description	Qty	
1	95.0025.00	CHASSIS ASSEMBLY CONSISTING OF:		
		Chassis	1	
		Washer D 6 A2 DIN 127	2	
		Washer D.6X18 A2 DIN9021N	6	
		Nut M 6 A2 DIN 982	2	
		Solution Tank Fixing Plate	2	
		Washer D6 A2 DIN 125A	2	
		Screw M 6X12 A2 DIN 933	2	
		Screw M6X20 A2 DIN 933	2	
		Handle Support	1	
		Handle Support Frame	1	
		Handle Support Fixing Pin	2	
		Screw M8X25 A2 DIN 7991	2	
		Washer D8 A2 DIN 125A	10	
		Washer D8 A2 DIN 127	4	
		Screw M8X16 A2 DIN 933	4	
		Nut M8 A2 DIN 982	3	
		Screw M8X60 A2 DIN 933	3	
		Screw M6X20 A2 DIN 7991	2	
2	95.0026.00	WHEEL ASSEMBLY (2 KITS PER MACHINE) CONSISTING OF:		
		Wheel Tube	1	
		Wheel	1	
		Screw M6 x 16 A2 DIN 7991	1	
		Ball Bearing Cover	1	
3	95.0027.00	BRUSH COVER FIXING KIT CONSISTING OF:		
		Pin	2	
		Washer D.14XD.20X1 DIN 998	2	
		Split Pin A2,8	2	
4	95.0002.00	ELECTRONIC BOARD CONSISTING OF:		
		Spacer	4	
		Electronic Board (1 fuse included)	1	
5	34.0031.00	Fuse 30Amp	1	
6	95.0028.00	ELECTRONIC BOARD COVER ASSEMBLY CONSISTING OF:		
		Nut M4 A2 DIN 982	2	
		Electronic Board Cover	1	
		Washer D4X12 A2	2	
7	95.0029.00	HOSE CONNECTOR KIT CONSISTING OF:		
		Connection Nipple	1	
		Connection Elbow	1	
		Flow Valve	1	
		Connection 1/4" TUBO D. 8 RL1	1	
		Connection D.3/8" TUBO 8 DIRITTO	1	
		Connection 1/4" TUBO D. 8	1	
		Elbow Connector 3/8" D.12	1	
		Hose Connector D.12	1	
		Elbow Connection Tank Drain 3/8" TUBO D. 8	1	
		Elbow Connector 1/4" D.8	1	
8	95.0030.00	SOLUTION FILTER KIT CONSISTING OF:		
		Solution Filter	1	
		Screw TCC M3,5x12 A2 DIN 7982C	2	
9	95.0031.00	SOLENOID VALVE KIT CONSISTING OF:		
		Solenoid Valve EV.2/2NC 1/4" 24VDC D150PS75/3/301	1	
		Washer M4 A2 DIN 125A	2	
		Nut M4 A2 DIN 982	2	
		Cap	1	
10	34.0126.00	SOLENOID VALVE CONNECTOR	1	
11	95.0067.00	CAP	1	
12	95.0061.00	SOLUTION HOSE KIT CONSISTING OF:		
		Solution Hose L=360	1	
		Solution Hose L=400	1	
		Solution Hose L=560	1	
13	04-3918-0000	GEL BATTERY 12V 25Ah	1	
14	95.0069.00	BATTERY CONNECTION CABLE KIT CONSISTING OF:		
		Cover	4	
		Battery Connection Cable	2	

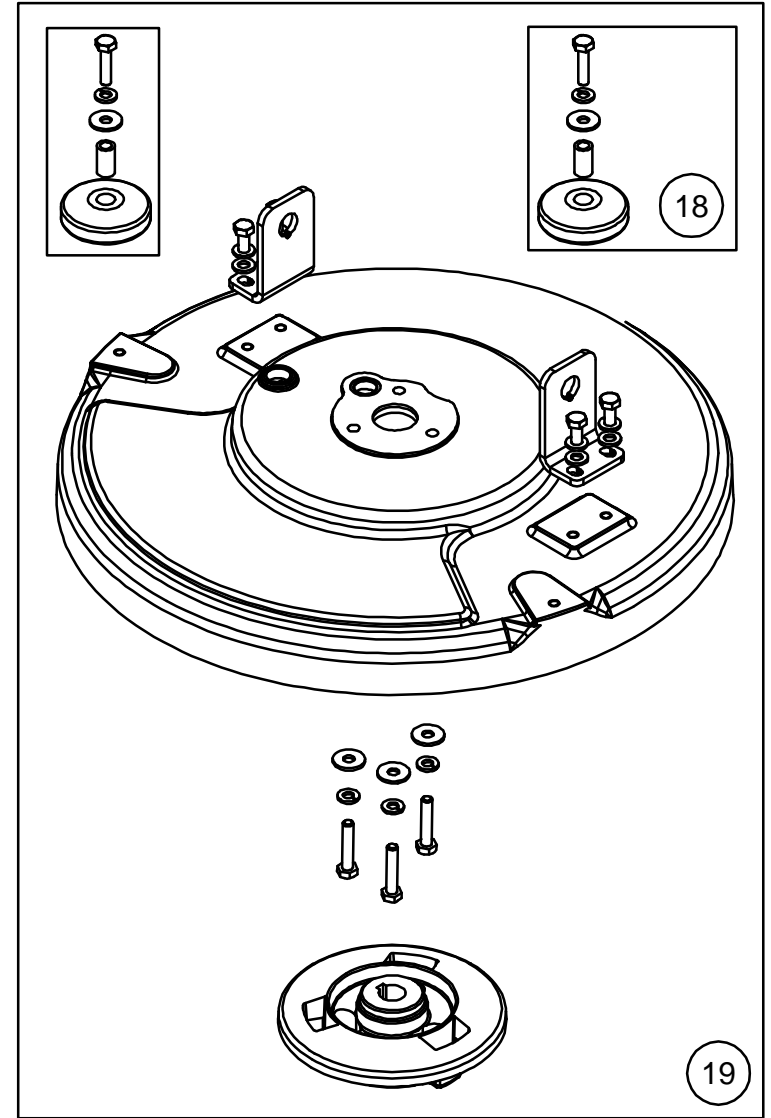
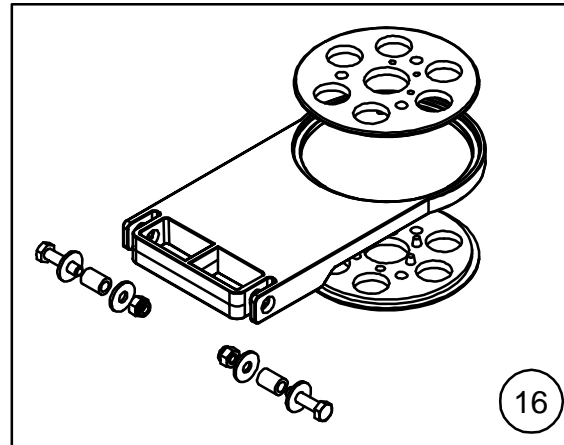
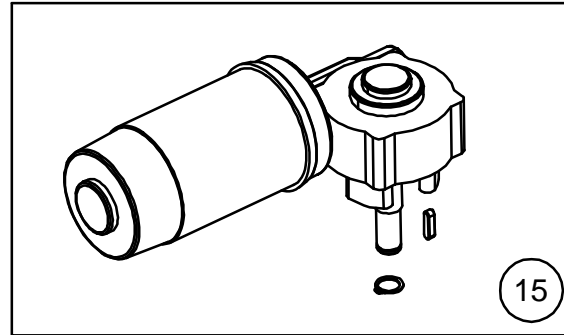
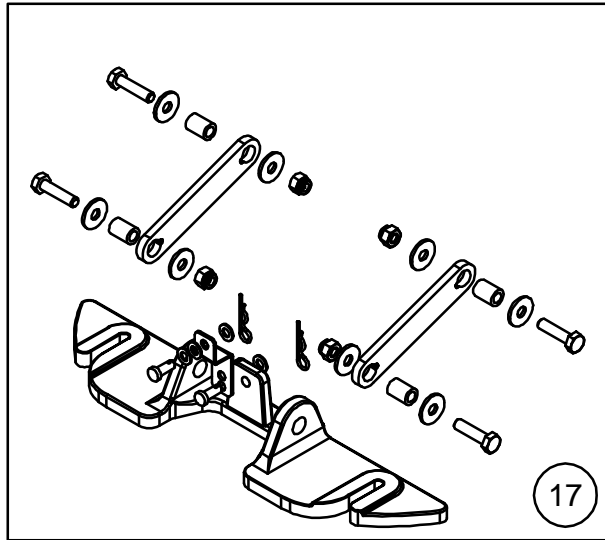


Tacony CFC

ORBIS BATTERY SCRUBBER DRIER

DRAWING NO: 09-1125-0000 SHEET 1 - CHASSIS ASSEMBLY

MACHINE:	OBS38130			
REF. PARTS LIST:	OBS38130 ISSUE 1			
SERIES:	A			
REVISION	ECN #	DESCRIPTION OF CHANGE	MOD. BY	DATE
A	-	ORIGINAL ISSUE	-	27 SEPT 10

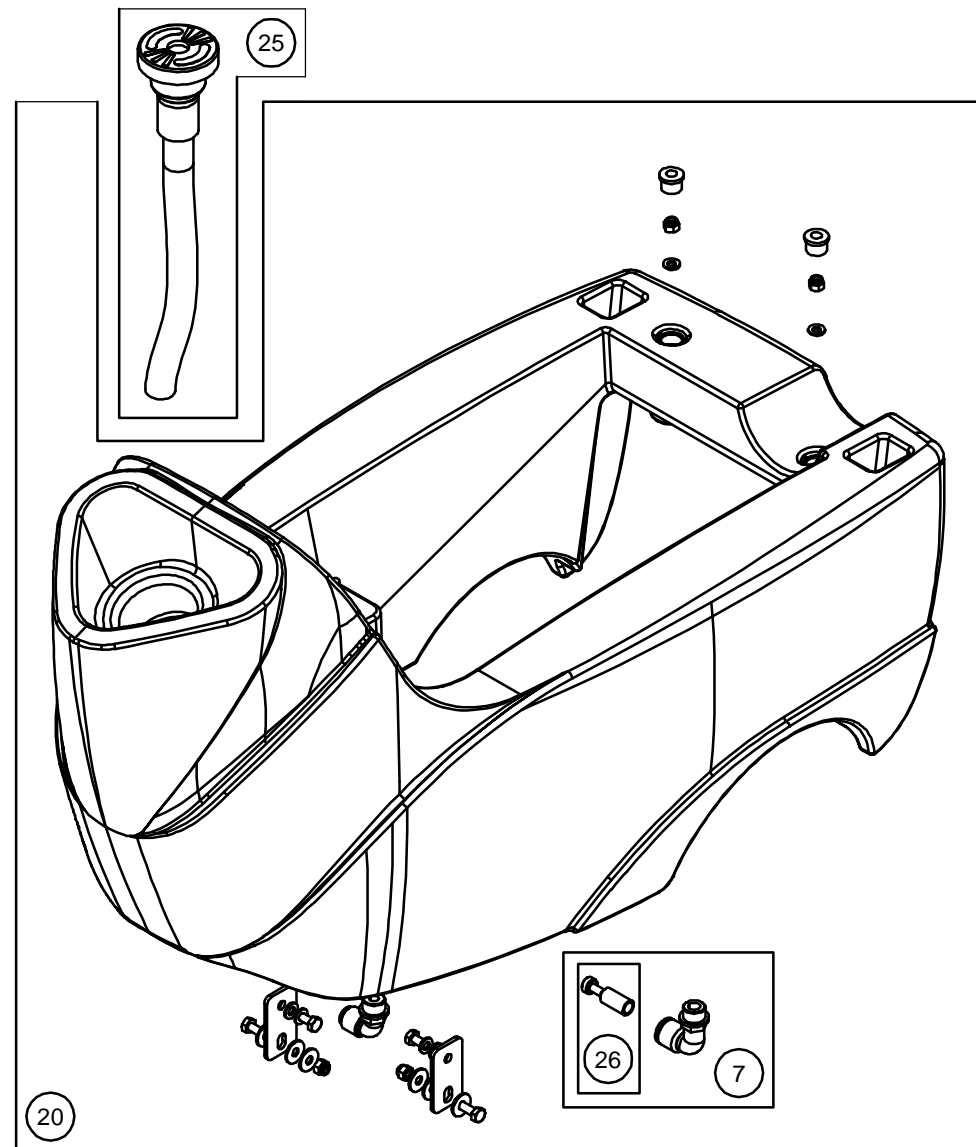
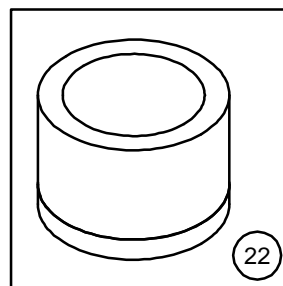
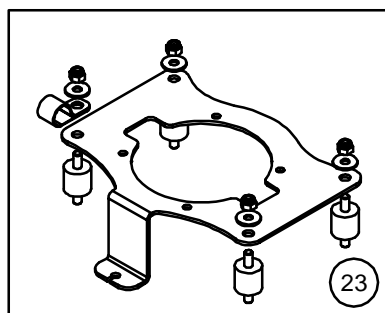
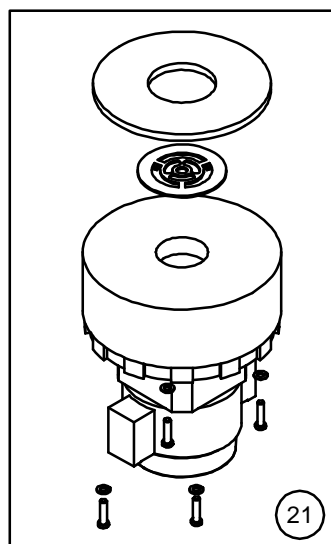
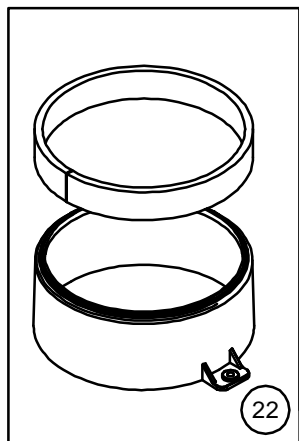


Tacony CFC

ORBIS BATTERY SCRUBBER DRIER

DRAWING NO: 09-1125-0000 SHEET 2 - BRUSH HEAD ASSEMBLY

MACHINE:	OBS38130			
REF. PARTS LIST:	OBS38130 ISSUE 1			
SERIES:	A			
REVISION	ECN #	DESCRIPTION OF CHANGE	MOD. BY	DATE
A	-	ORIGINAL ISSUE	-	27 SEPT 10



Tacony CFC

ORBIS BATTERY SCRUBBER DRIER

DRAWING NO: 09-1125-0000 SHEET 3 - SOLUTION TANK AND VACUUM MOTOR ASSEMBLY

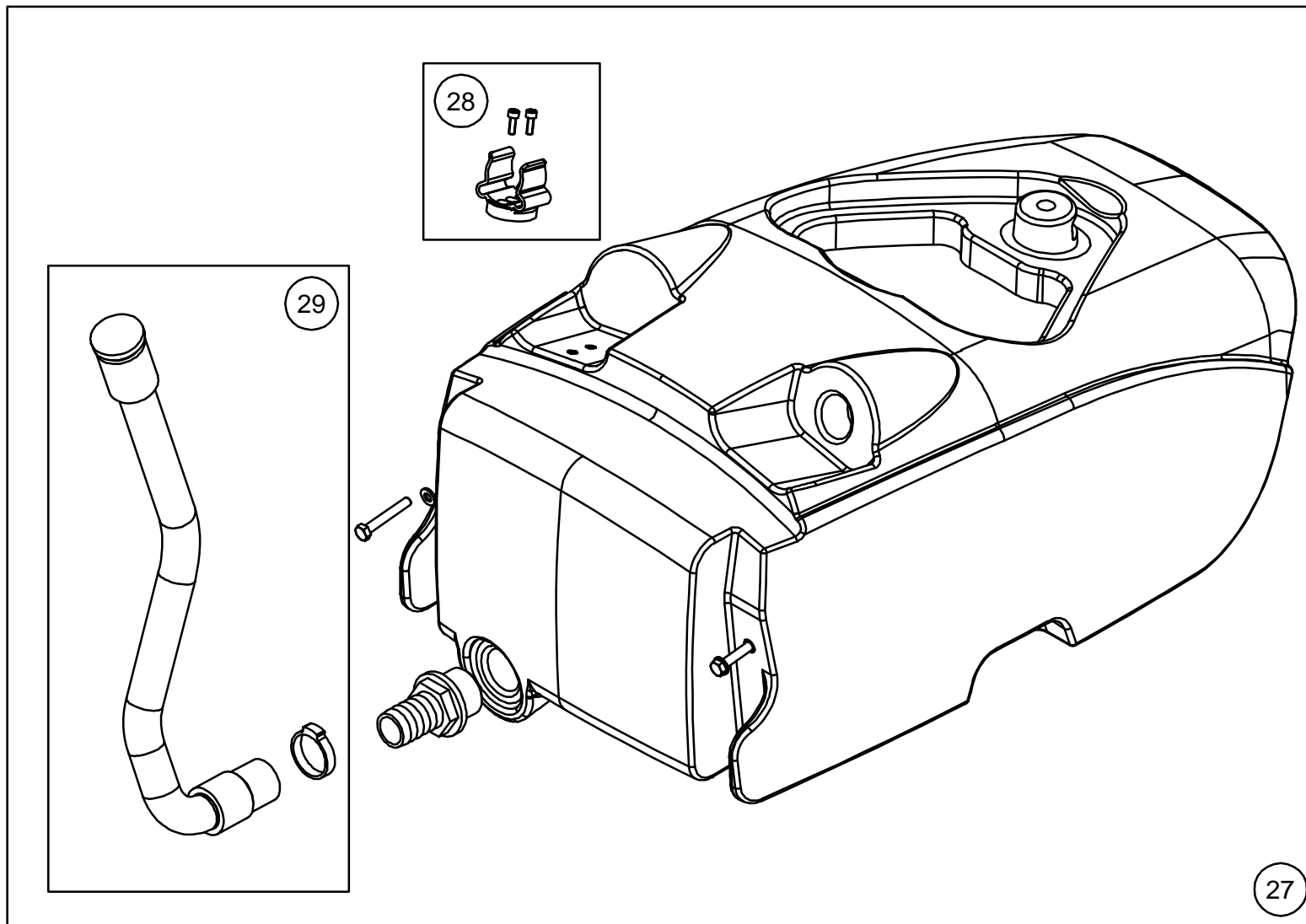
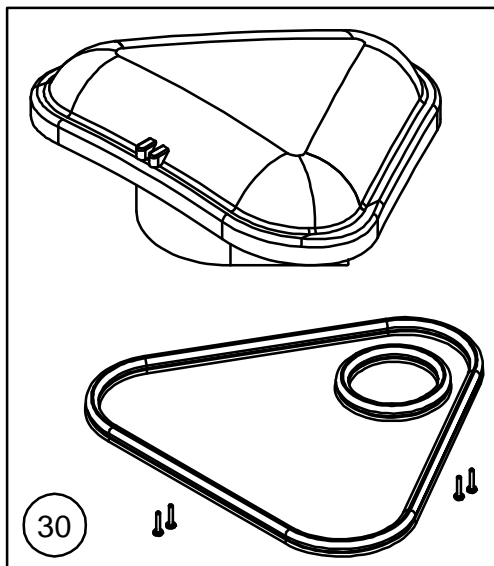
MACHINE: OBS38130

REF. PARTS LIST: OBS38130 ISSUE 1

SERIES: A

REVISION	ECN #	DESCRIPTION OF CHANGE	MOD. BY	DATE
A	-	ORIGINAL ISSUE	-	27 SEPT 10

[illegible]



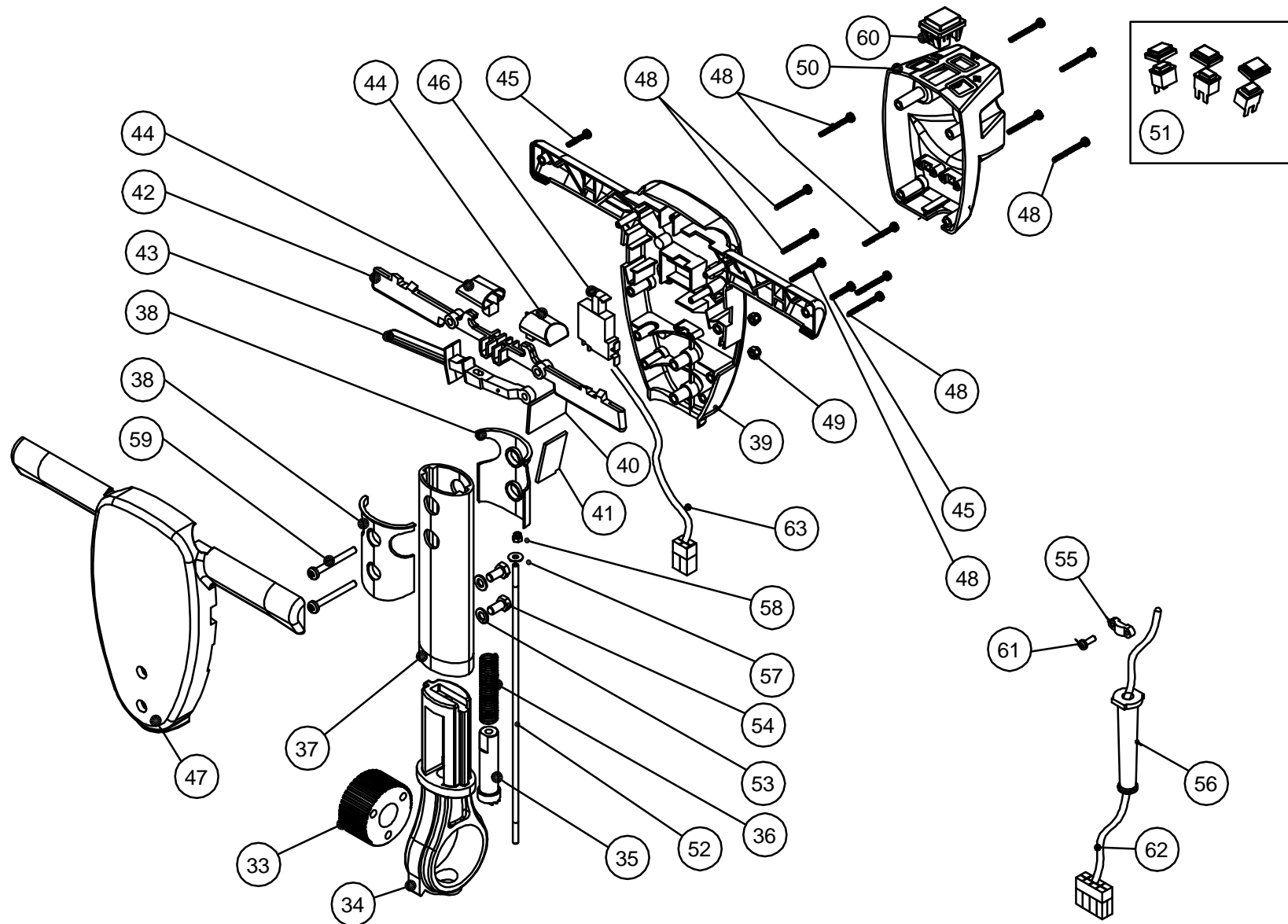
Tacony CFC

ORBIS BATTERY SCRUBBER DRIER

DRAWING NO: 09-1125-0000 SHEET 4 - RECOVERY TANK ASSEMBLY

MACHINE:	OBS38130			
REF. PARTS LIST:	OBS38130 ISSUE 1			
SERIES:	A			
REVISION	ECN #	DESCRIPTION OF CHANGE	MOD. BY	DATE
A	-	ORIGINAL ISSUE	-	27 SEPT 10

[illegible]



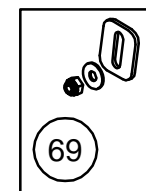
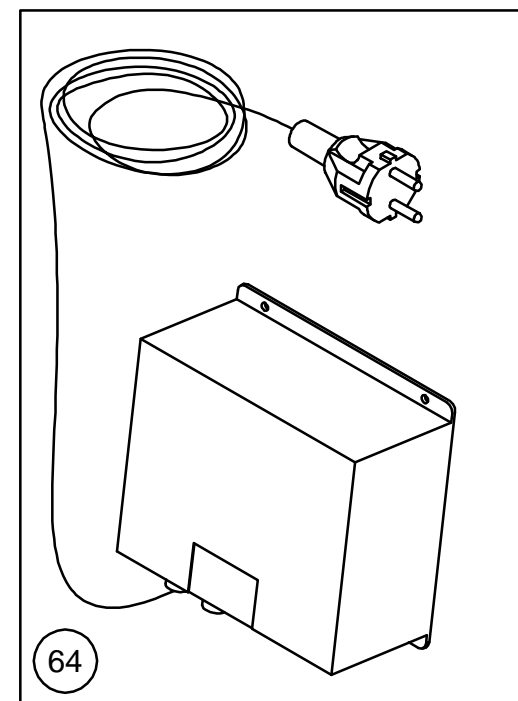
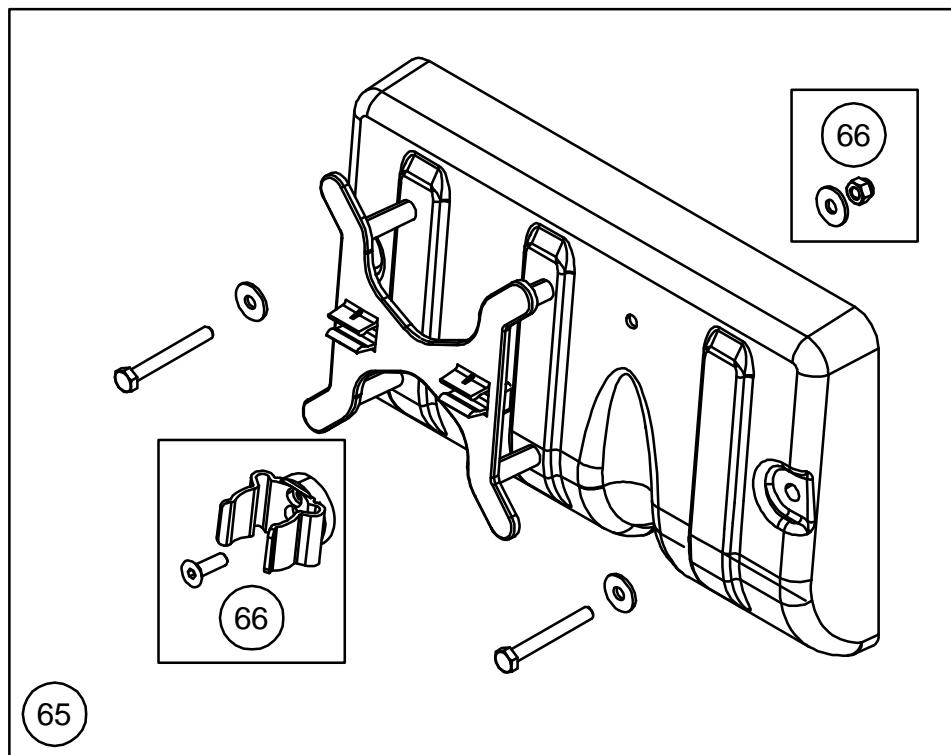
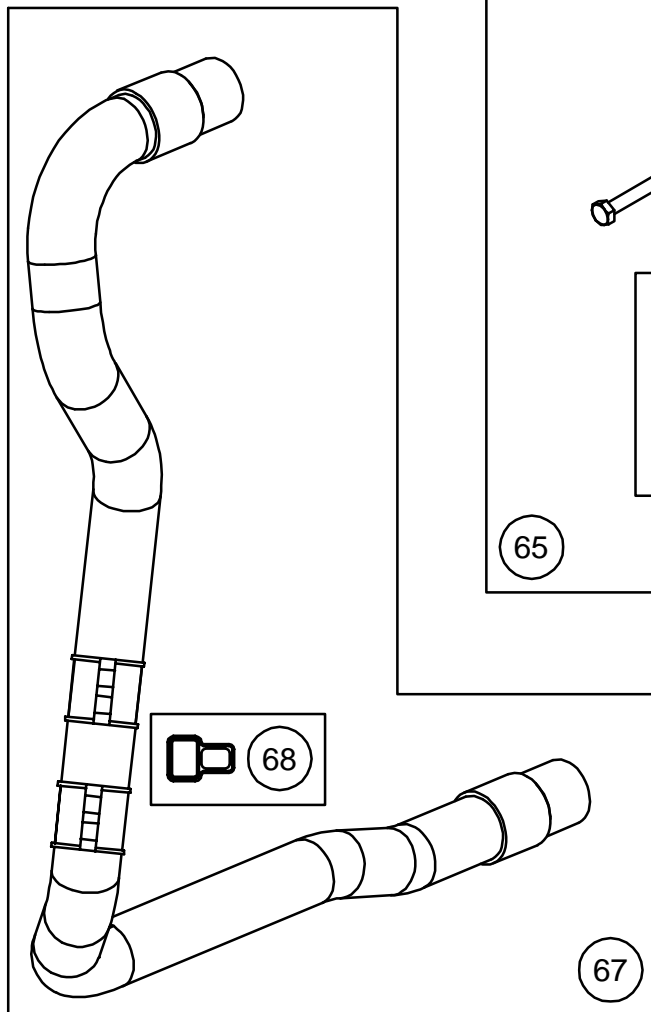
Tacony CFC

ORBIS BATTERY SCRUBBER DRIER

DRAWING NO: 09-1125-0000 SHEET 5 - HANDLE ASSEMBLY

MACHINE:	OBS38130			
REF. PARTS LIST:	OBS38130 ISSUE 1			
SERIES:	A			
REVISION	ECN #	DESCRIPTION OF CHANGE	MOD. BY	DATE
A	-	ORIGINAL ISSUE	-	27 SEPT 10

[illegible]



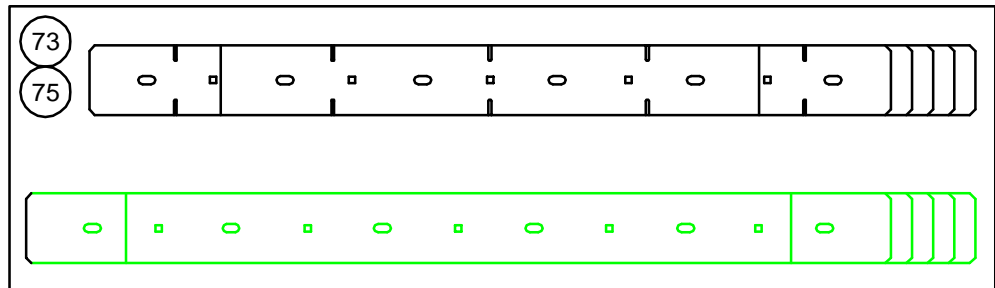
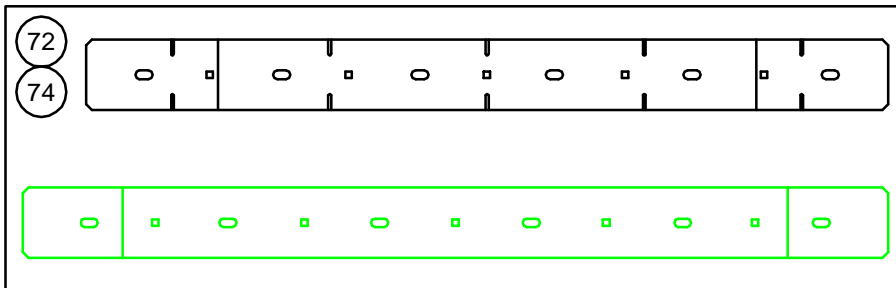
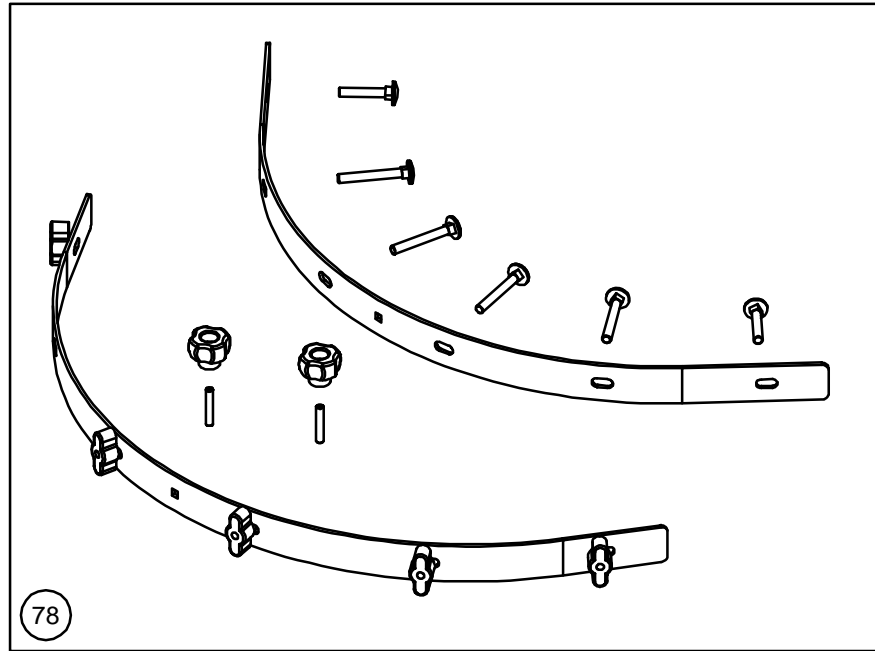
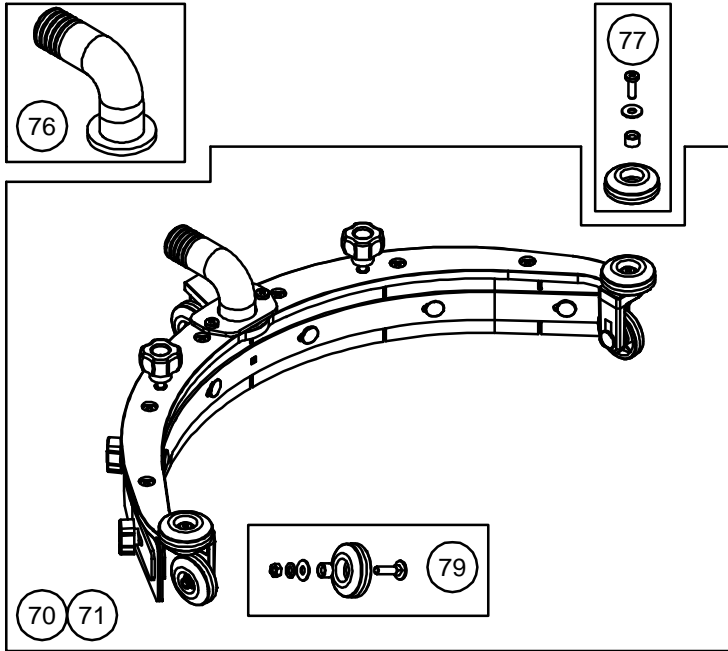
Tacony CFC

ORBIS BATTERY SCRUBBER DRIER

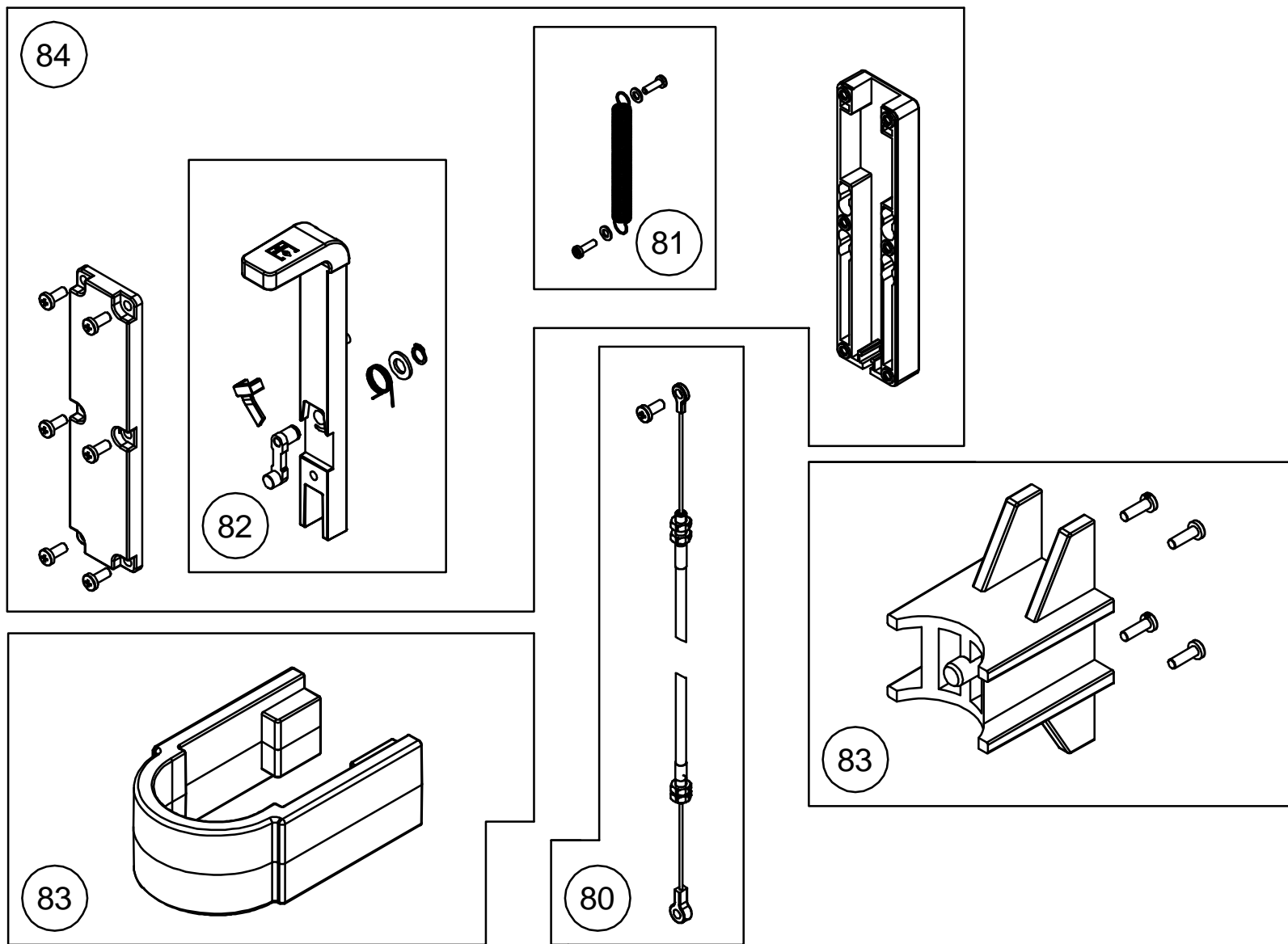
DRAWING NO: 09-1125-0000 SHEET 6- CHARGER AND REAR COVER ASSEMBLY

MACHINE:	OBS38130			
REF. PARTS LIST:	OBS38130 ISSUE 1			
SERIES:	A			
REVISION	ECN #	DESCRIPTION OF CHANGE	MOD. BY	DATE
A	-	ORIGINAL ISSUE	-	27 SEPT 10

[illegible]



Tacony CFC		ORBIS BATTERY SCRUBBER DRIER				
DRAWING NO: 09-1125-0000 SHEET 7 - SUCTION BEAM ASSEMBLY						
MACHINE:	OBS38130					
REF. PARTS LIST:	OBS38130 ISSUE 1					
SERIES:	A					
REVISION	ECN #	DESCRIPTION OF CHANGE			MOD. BY	DATE
A	-	ORIGINAL ISSUE			-	27 SEPT 10



Tacony CFC

ORBIS BATTERY SCRUBBER DRIER

DRAWING NO: 09-1125-0000 SHEET 8 - SQUEEGEE LIFTING SYSTEM ASSEMBLY

MACHINE:	OBS38130			
REF. PARTS LIST:	OBS38130 ISSUE 1			
SERIES:	A			
REVISION	ECN #	DESCRIPTION OF CHANGE	MOD. BY	DATE
A	-	ORIGINAL ISSUE	-	27 SEPT 10

