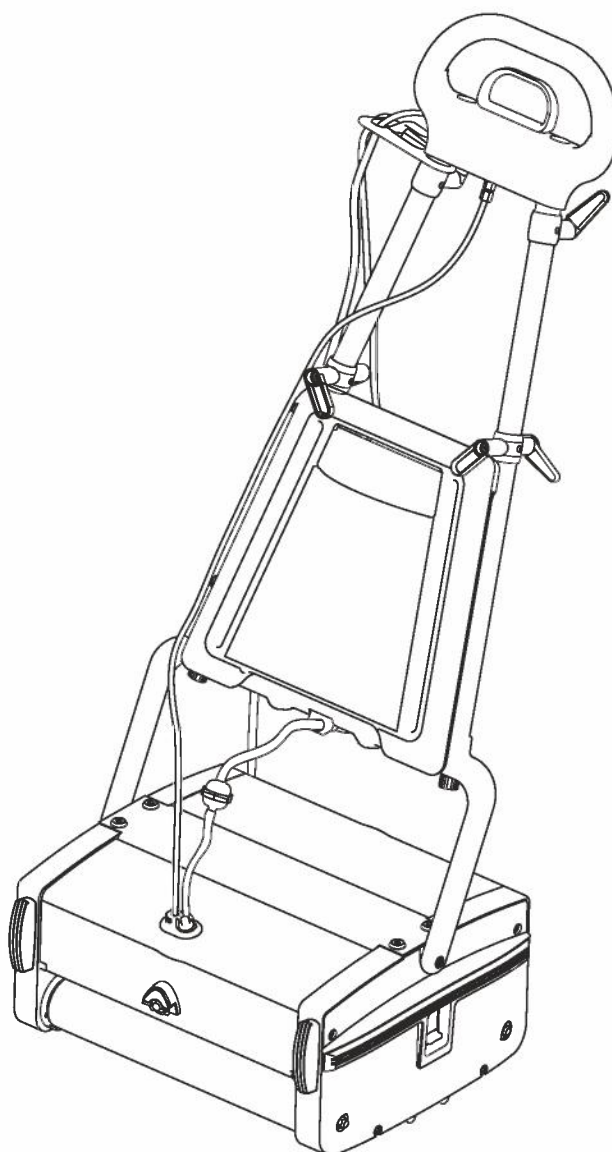


Spare parts list

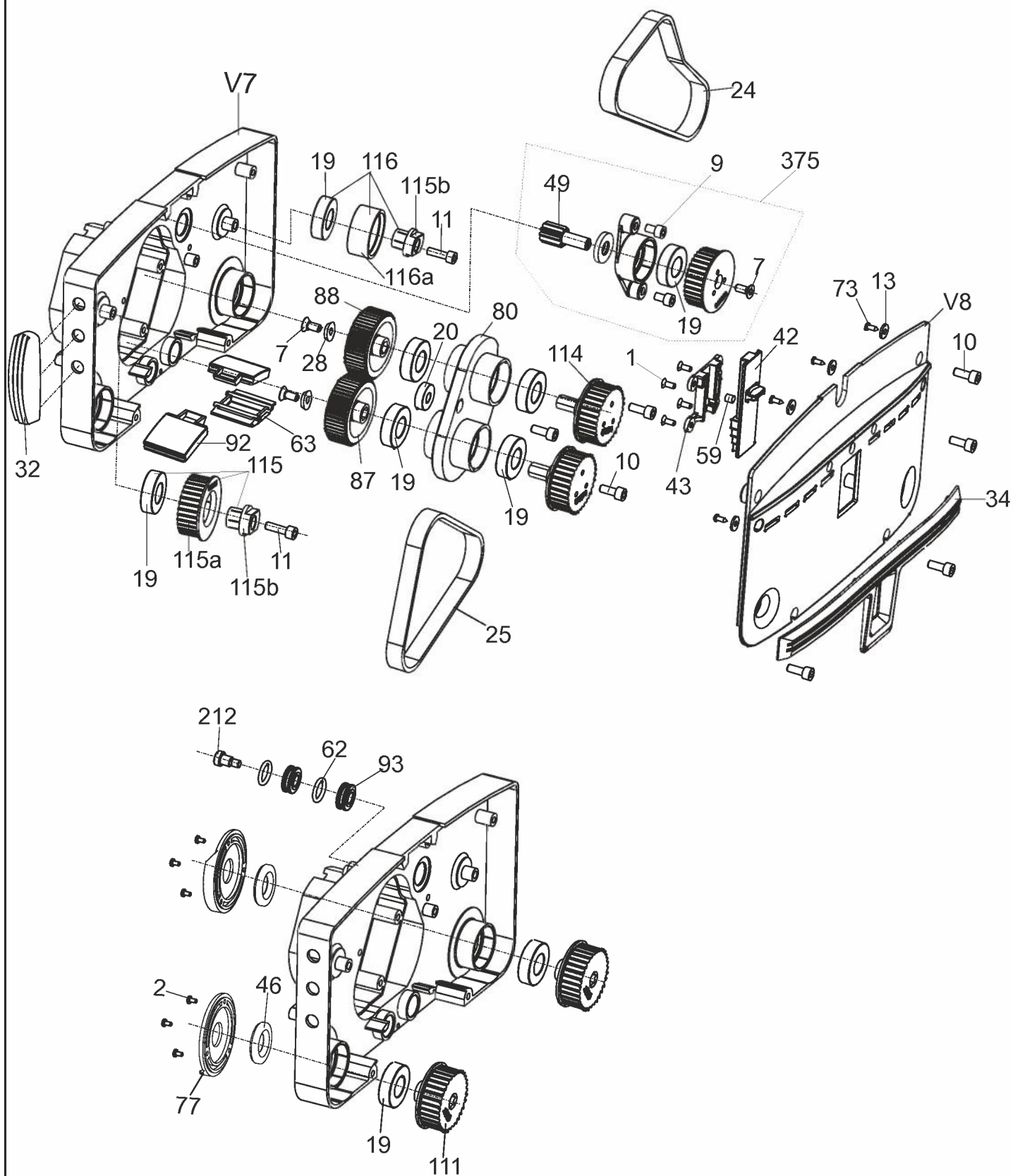
Machine serial number starting from
002420 P 06

MW340/PUMP
Series C



03-8043-0000
Issue : 2

Housing-Drive Side



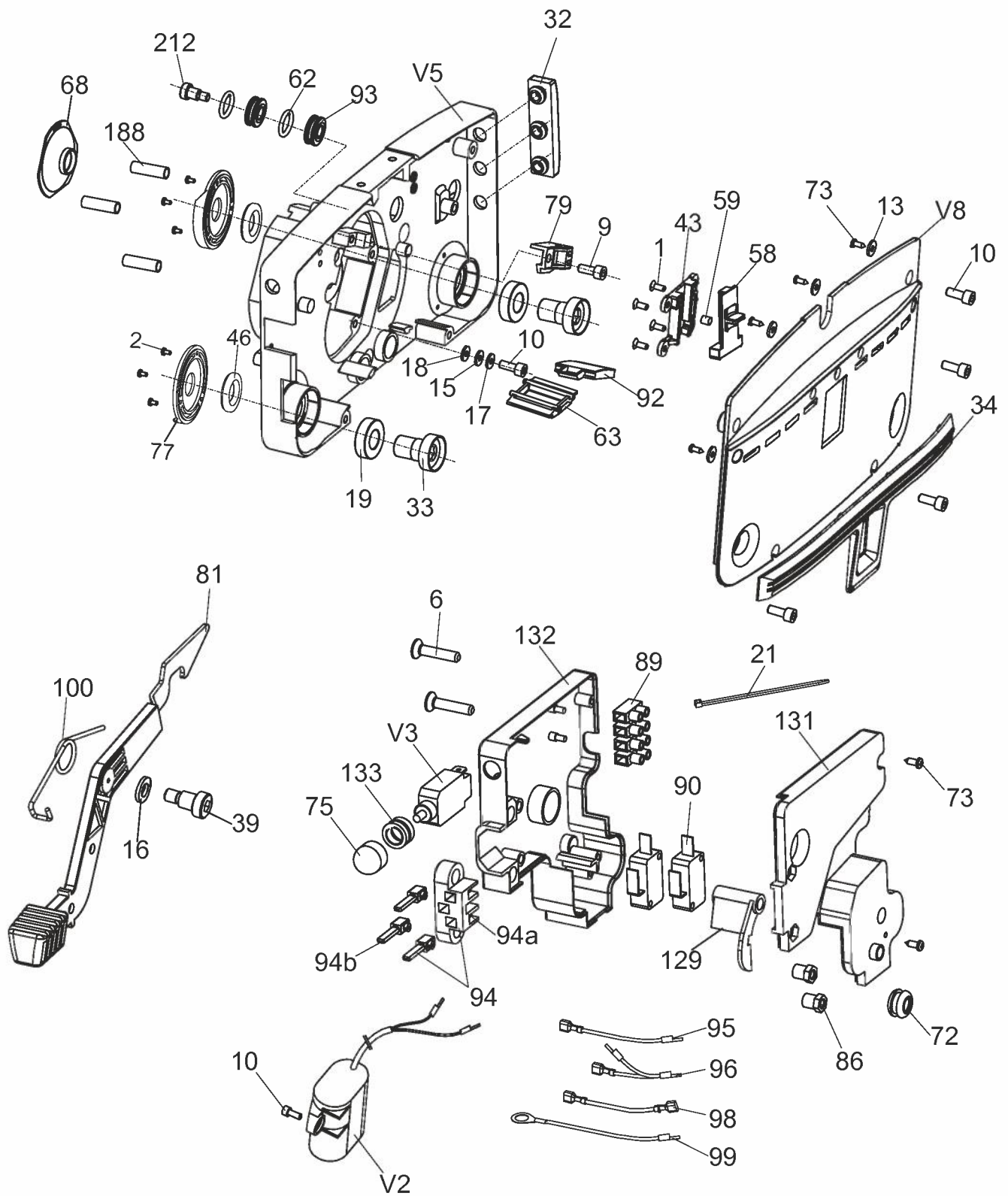
NOTE: Item no 9 is not included in assy 375.

Housing-Drive Side

3

| Ref. No | Part No | Description | Size | Qty |
|---------|--------------|------------------------|------------|-----|
| 1 | 90-0258-0000 | CSK SCREW | M4x10 | 4 |
| 2 | 90-0001-0000 | CRPH SCREW | M3x6 | 6 |
| 7 | 90-0143-0000 | CSK SCREW | M6x14 | 3 |
| 9 | 90-0293-0000 | ALLEN SCREW | M6x10 | 2 |
| 10 | 90-0144-0000 | ALLEN SCREW | M6x16 | 7 |
| 11 | 90-0005-0000 | ALLEN SCREW | M6x20 | 2 |
| 13 | 90-0007-0000 | WASHER | 4.2x12x1.6 | 4 |
| 19 | 90-0009-0000 | BEARING | 6003 2RS | 9 |
| 20 | 90-0598-0000 | BUSH GUIDE SHAFT MOTOR | | 1 |
| 24 | 90-0011-0000 | BELT | 500 5 M | 1 |
| 25 | 90-0012-0000 | BELT | 425 5 M | 1 |
| 28 | 90-0152-0000 | WASHER | | 2 |
| 32 | 90-0154-0000 | BUMPER | | 1 |
| 34 | 90-0156-0000 | BUMPER | | 1 |
| 42 | 90-0024-0000 | BRUSH SLIDER | | 1 |
| 43 | 90-0025-0000 | SLIDER HOUSING | | 1 |
| 46 | 90-0027-0000 | SEAL | | 2 |
| 49 | 90-0029-0000 | PINION | | 1 |
| 53 | 90-0031-0000 | DRUM SPROCKET | | 1 |
| 59 | 90-0035-0000 | PIN | | 1 |
| 62 | 90-0176-0000 | O' RING | | 2 |
| 63 | 90-0040-0000 | SHIELD | | 1 |
| 73 | 90-0183-0000 | SELF TAPPING SCREW | | 4 |
| 77 | 90-0020-0000 | CAP | | 2 |
| 80 | 90-0285-0000 | GEAR HOUSING | | 1 |
| 83 | 90-0268-0000 | HOUSING SPROCKET | | 1 |
| 84 | 90-0264-0000 | SEAL | | 1 |
| 87 | 90-0286-0000 | GEAR – LH | | 1 |
| 88 | 90-0287-0000 | GEAR - RH | | 1 |
| 92 | 90-0267-0000 | SHIELD | | 2 |
| 93 | 90-0294-0000 | ROLLER | | 2 |
| 111 | 90-0061-0000 | BRUSH SPROCKET | | 2 |
| 114 | 90-0063-0000 | GEAR SPROCKET | | 2 |
| 115 | 90-0065-0000 | IDLER ASSY | | 1 |
| 115a | 90-0169-0000 | SPROCKET | | 1 |
| 115b | 90-0161-0000 | HUB | | 2 |
| 116 | 90-0197-0000 | IDLER ASSY | | 1 |
| 116a | 90-0166-0000 | SLEEVE | | 1 |
| 212 | 90-0392-0000 | STUB AXLE | | 1 |
| 375 | 90-0499-0000 | DRUM PINION ASSY | | 1 |
| V7 | 90-0316-0000 | DRIVE HOUSING | | 1 |
| V8 | 90-0126-0000 | COVER | | 1 |

Housing-Idle Side

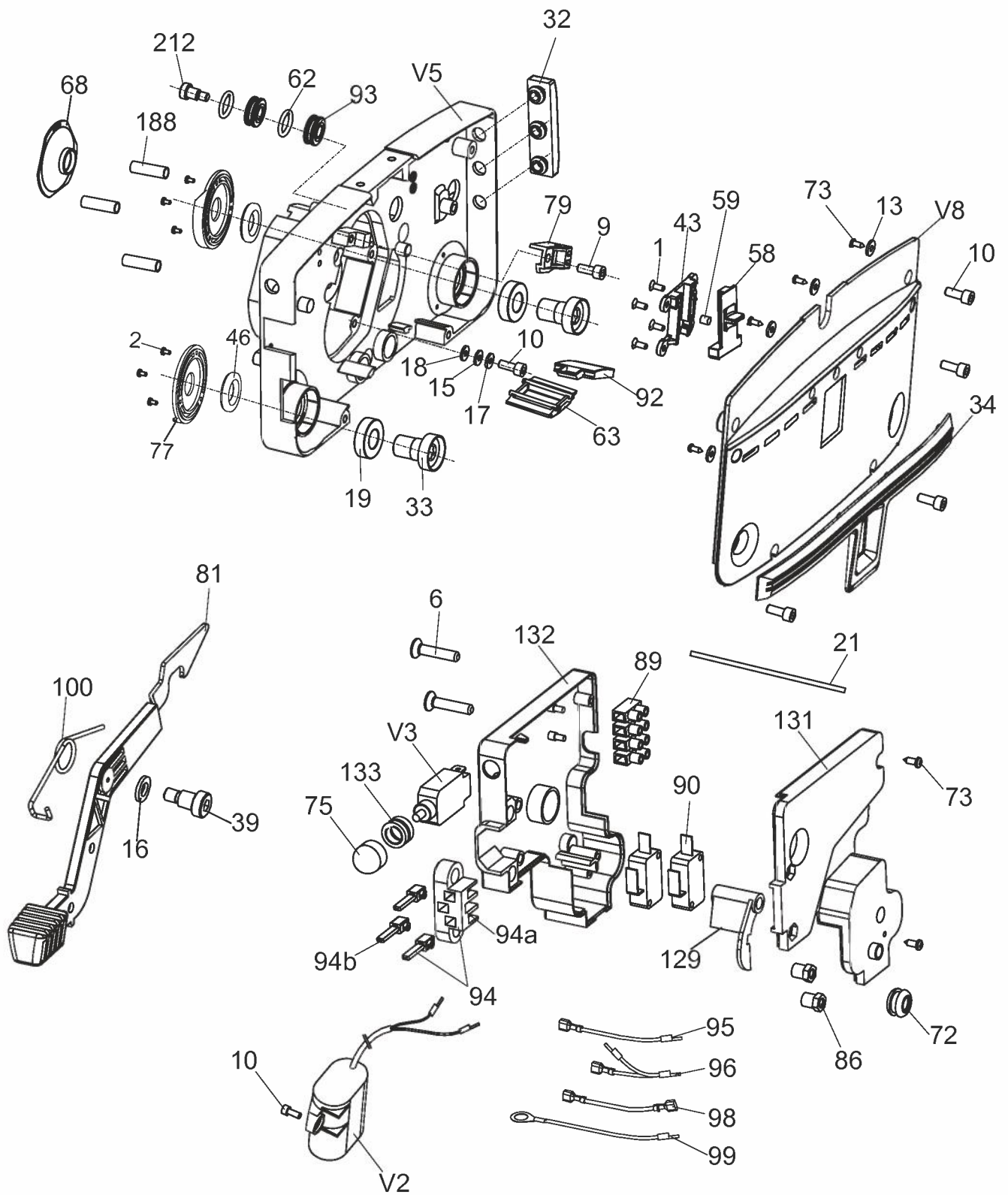


Housing-Idle Side

5

| Ref. No | Part No | Description | Size | Qty |
|---------|--------------|--------------------|------------|-----|
| 1 | 90-0258-0000 | CSK SCREW | M4x10 | 4 |
| 2 | 90-0001-0000 | CRPH SCREW | M3x6 | 6 |
| 6 | 90-0261-0000 | CSK SCREW | M5x25 | 2 |
| 9 | 90-0293-0000 | ALLEN SCREW | M6x10 | 1 |
| 10 | 90-0144-0000 | ALLEN SCREW | M6x16 | 6 |
| 13 | 90-0007-0000 | WASHER | 4.2x12x1.6 | 4 |
| 15 | 90-0147-0000 | WASHER | 6.4x12x1.6 | 1 |
| 16 | 90-0395-0000 | WASHER | 9x17x1.6 | 1 |
| 17 | 90-0298-0000 | SPRING WASHER | M6 | 1 |
| 18 | 90-0148-0000 | TOOTHED WASHER | M6 | 1 |
| 19 | 90-0009-0000 | BEARING | 6003 2RS | 2 |
| 21 | 90-0149-0000 | WIRE TIE | | 3 |
| 32 | 90-0154-0000 | BUMPER | | 1 |
| 33 | 90-0155-0000 | BUSH | | 2 |
| 34 | 90-0156-0000 | BUMPER | | 1 |
| 39 | 90-0123-0000 | STUB AXLE | | 1 |
| 43 | 90-0025-0000 | SLIDER HOUSING | | 1 |
| 46 | 90-0027-0000 | SEAL | | 2 |
| 58 | 90-0033-0000 | TRANSPORT SLIDER | | 1 |
| 59 | 90-0035-0000 | PIN | | 1 |
| 62 | 90-0176-0000 | O' RING | | 2 |
| 63 | 90-0040-0000 | SHIELD | | 1 |
| 68 | 90-0179-0000 | FAN COVER | | 1 |
| 72 | 90-0045-0000 | GROMMET | | 2 |
| 73 | 90-0183-0000 | SELF TAPPING SCREW | | 6 |
| 75 | 90-0048-0000 | CAP | | 1 |
| 77 | 90-0020-0000 | CAP | | 2 |
| 79 | 90-0188-0000 | STOPPER | | 1 |
| 81 | 90-0259-0000 | PEDAL | | 1 |
| 86 | 90-0297-0000 | NUT | | 2 |
| 89 | 90-0269-0000 | CONNECTOR | | 1 |
| 90 | 90-0283-0000 | SWITCH | | 2 |
| 92 | 90-0267-0000 | SHIELD | | 1 |
| 93 | 90-0294-0000 | ROLLER | | 2 |
| 94 | 90-0290-0000 | SOCKET ASSY | | 1 |
| 94a | 90-0291-0000 | SOCKET | | 1 |
| 94b | 90-0292-0000 | TERMINAL | | 3 |
| 95 | 90-0278-0000 | CABLE | | 1 |
| 96 | 90-0279-0000 | CABLE | | 1 |
| 98 | 90-0281-0000 | CABLE | | 1 |
| 99 | 90-0282-0000 | CABLE | | 1 |

Housing-Idle Side

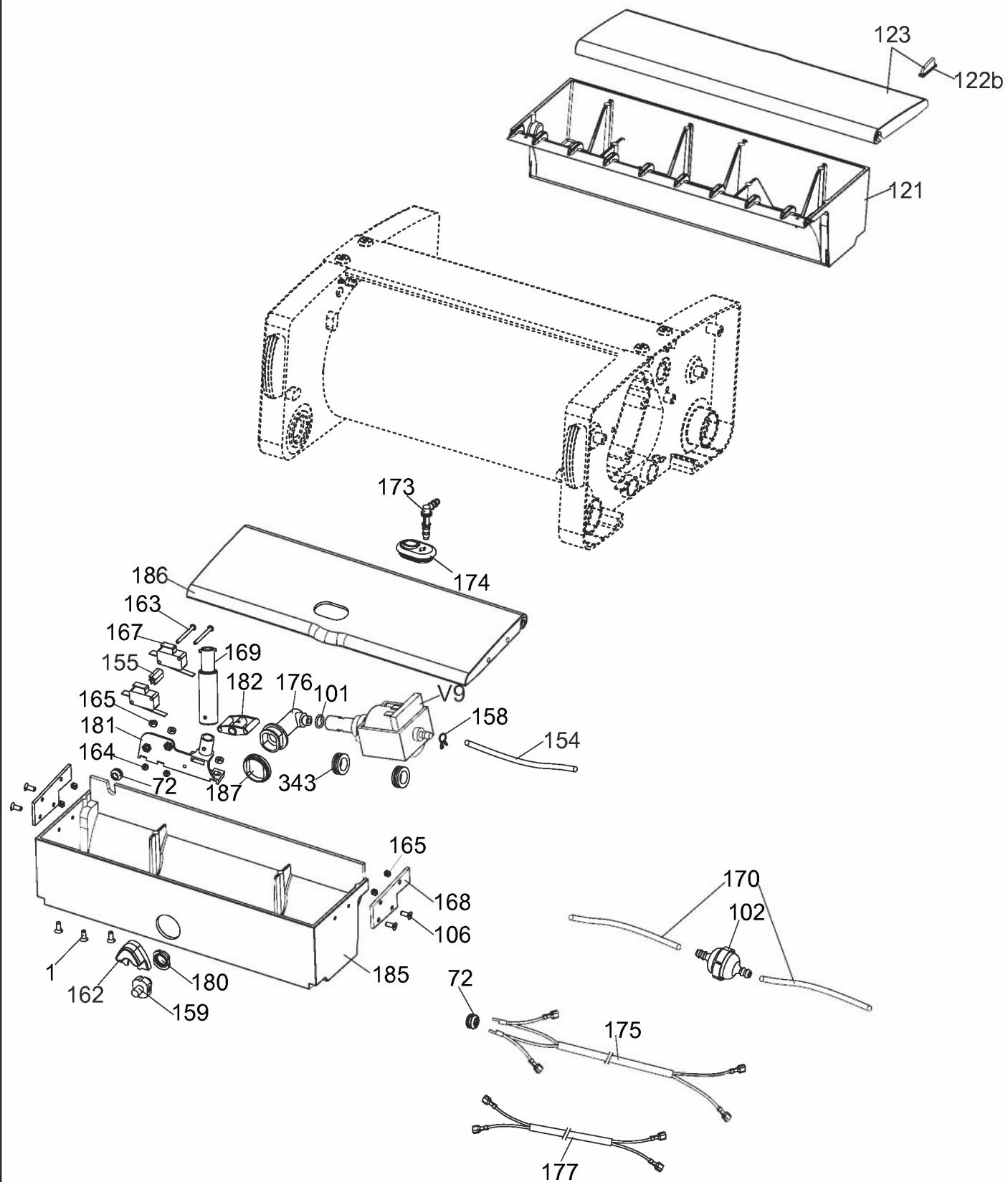


Housing-Idle Side

7

| Ref. No | Part No | Description | Size | Qty |
|------------|--------------|------------------------|------|-----|
| <hr/> | | | | |
| 100 | 90-0260-0000 | SPRING-PEDAL | | 1 |
| 129 | 90-0265-0000 | LEVER SWITCH ACT | | 1 |
| 131 | 90-0262-0000 | INSULATION TOP | | 1 |
| 132 | 90-0263-0000 | INSULATION BOTTOM | | 1 |
| 133 | 90-0295-0000 | NUT | | 1 |
| 188 | 90-0397-0000 | SLEEVE TIE ROD | | 3 |
| 212 | 90-0392-0000 | STUB AXLE | | 1 |
| V2 | 90-0272-0000 | CAPACITOR (13 MFD) | | 1 |
| V3 | 90-0056-0000 | CIRCUIT BREAKER (3.5A) | | 1 |
| V5 | 90-0315-0000 | IDLE HOUSING | | 1 |
| V8 | 90-0126-0000 | COVER | | 1 |

Pump Housing

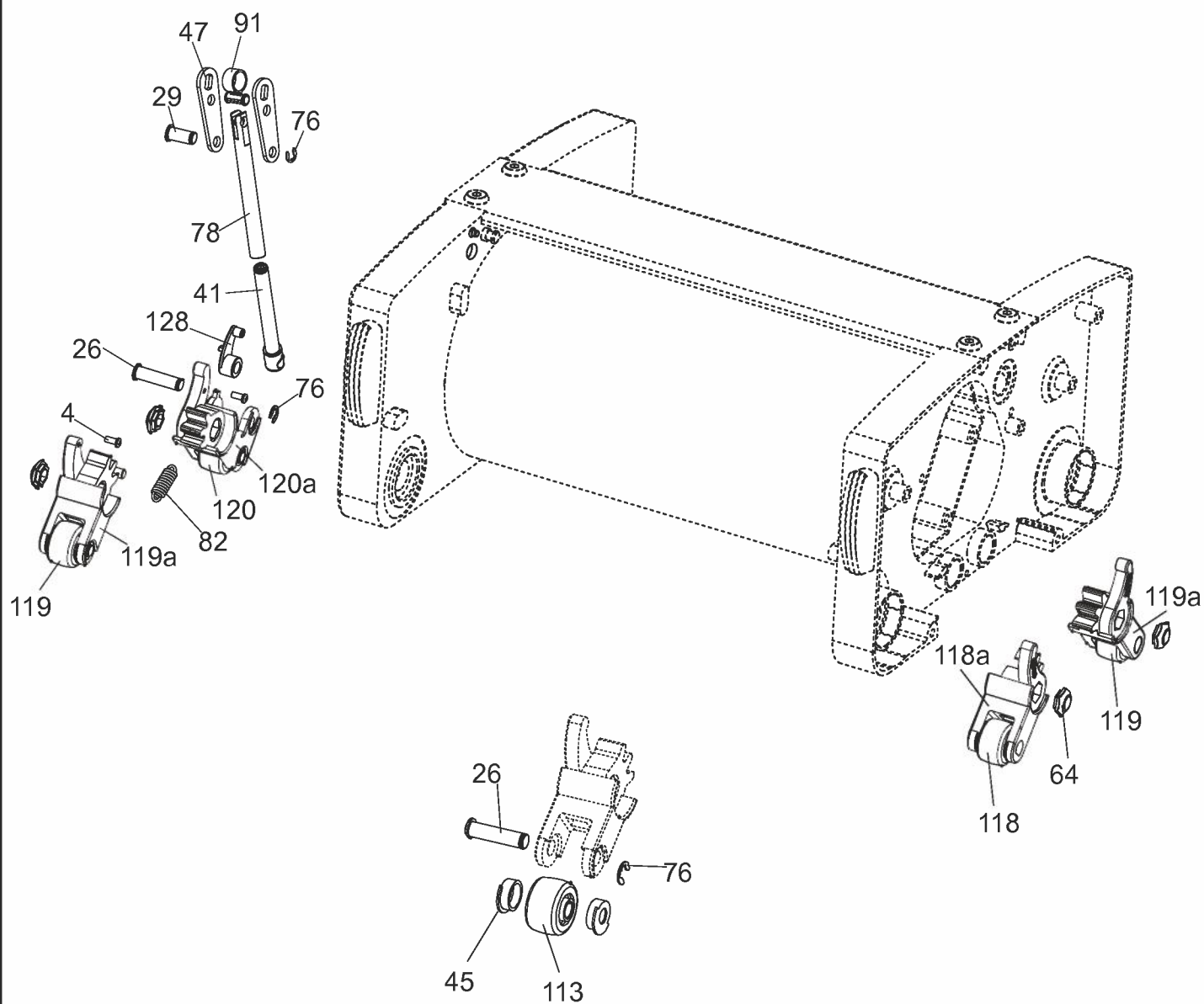


Pump Housing

9

| Ref. No | Part No | Description | Size | Qty |
|---------|--------------|----------------------|-------|-----|
| 1 | 90-0258-0000 | CSK SCREW | M4x10 | 3 |
| 72 | 90-0045-0000 | GROMMET | | 2 |
| 101 | 90-0100-0000 | O-RING-PUMP | | 1 |
| 102 | 90-0113-0000 | FILTER | | 1 |
| 106 | 90-0599-0000 | CSK SCREW | M4x12 | 4 |
| 121 | 90-0072-0000 | DIRTY WATER TANK | | 1 |
| 122b | 90-0055-0000 | LID PAD | | 2 |
| 123 | 90-0075-0000 | LID ASSY-DIRTY WATER | | 1 |
| 154 | 90-0104-0000 | HOSE-275 | | 1 |
| 155 | 90-0227-0000 | INSULATION | | 1 |
| 158 | 90-0353-0000 | HOSE CLIP | | 1 |
| 159 | 90-0107-0000 | NOZZLE | | 1 |
| 162 | 90-0112-0000 | BOOT | | 1 |
| 163 | 90-0138-0000 | SCREW | M3X30 | 2 |
| 164 | 90-0140-0000 | HEX NUT | M3 | 2 |
| 165 | 90-0141-0000 | HEX NUT | M4 | 6 |
| 167 | 90-0057-0000 | SWITCH | | 2 |
| 168 | 90-0349-0000 | STRIP LID | | 2 |
| 169 | 90-0350-0000 | EXTENSION BUSH | | 1 |
| 170 | 90-0403-0000 | HOSE-165 | | 2 |
| 173 | 90-0404-0000 | HOSE CONNECTOR | | 1 |
| 174 | 90-0405-0000 | BOOT-LID | | 1 |
| 175 | 90-0343-0000 | CABLE | | 1 |
| 176 | 90-0094-0000 | ADAPTOR NOZZLE | | 1 |
| 177 | 90-0344-0000 | CABLE | | 1 |
| 180 | 90-0093-0000 | SEAL NOZZLE | | 1 |
| 181 | 90-0209-0000 | BASE SWITCH | | 1 |
| 182 | 90-0212-0000 | LEVER | | 1 |
| 183 | 90-0213-0000 | CLAMP | | 1 |
| 184 | 90-0214-0000 | SUPPORT RING | | 2 |
| 185 | 90-0346-0000 | PUMP HOUSING | | 1 |
| 186 | 90-0345-0000 | LID-PUMP HOUSING | | 1 |
| 187 | 90-0099-0000 | SPACER | | 1 |
| V9 | 04-3393-0000 | PUMP (230V, 50Hz) | | 1 |

Lever and Guide Link Mechanism

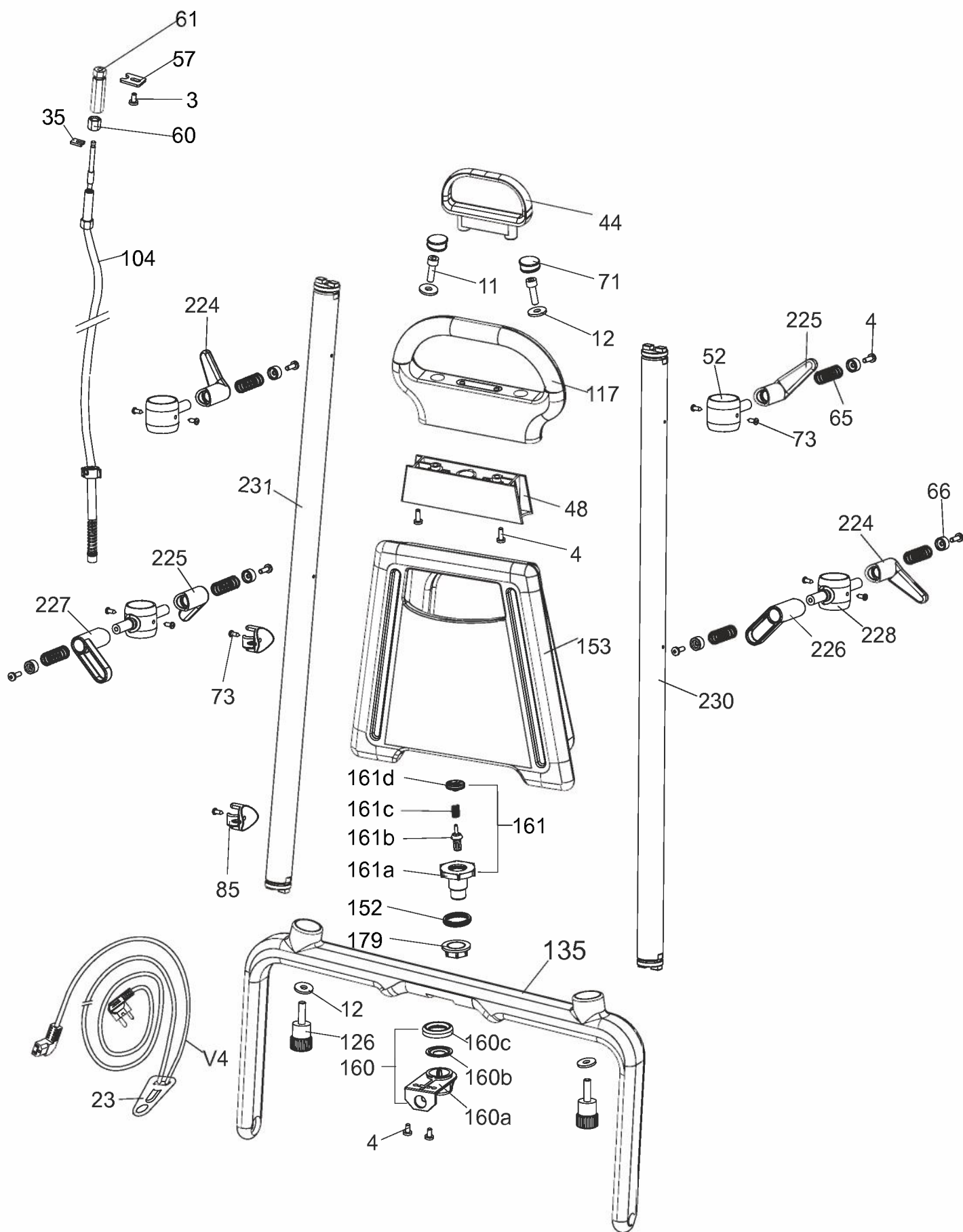


Lever and Guide Link Mechanism

11

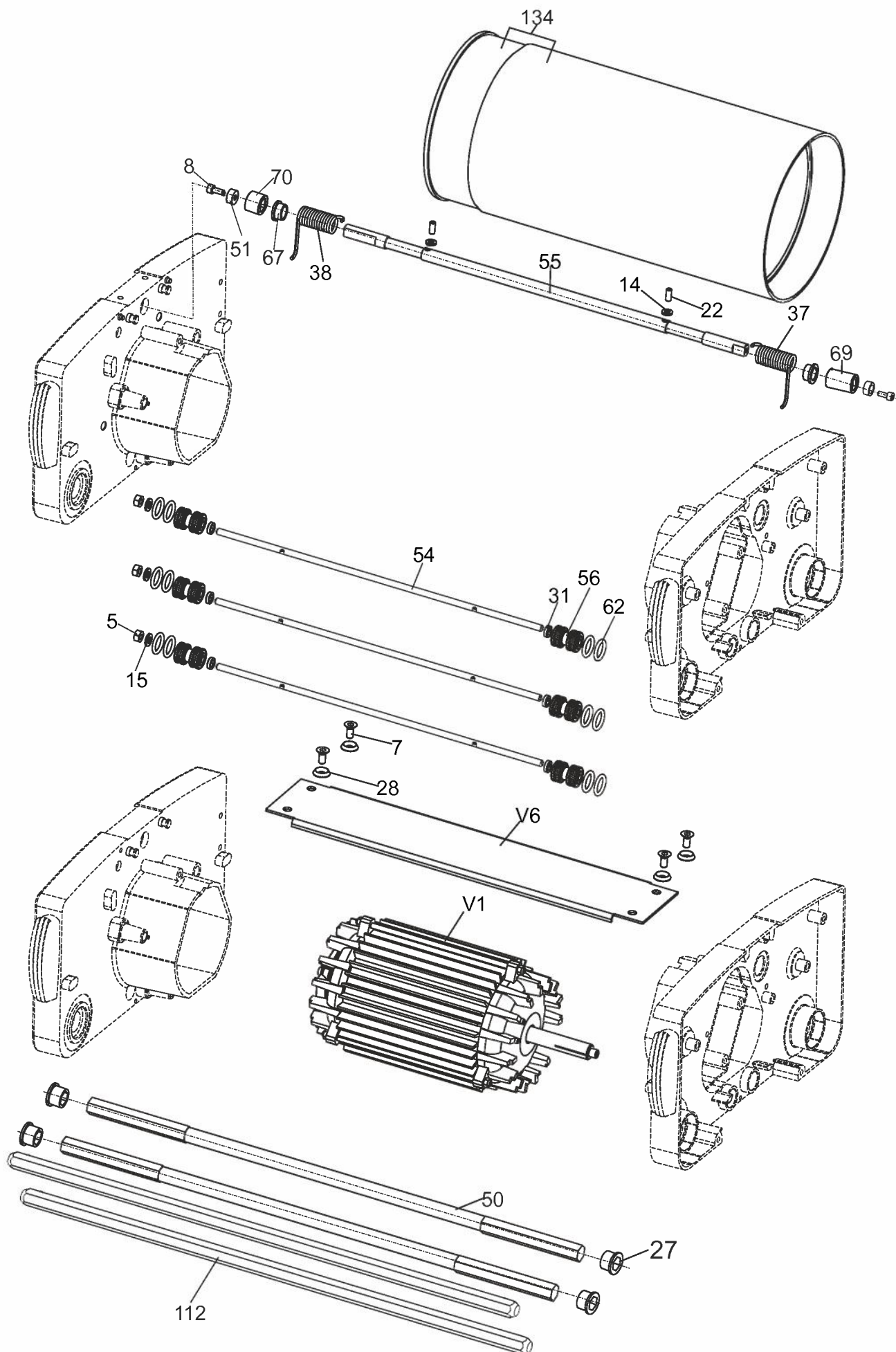
| Ref. No | Part No | Description | Size | Qty |
|---------|--------------|--------------|-------|-----|
| 4 | 90-0046-0000 | CRPH SCREW | M4x12 | 2 |
| 26 | 90-0151-0000 | CLEVIS PIN | | 5 |
| 29 | 90-0153-0000 | CLEVIS PIN | | 1 |
| 41 | 90-0159-0000 | LINK | | 1 |
| 45 | 90-0162-0000 | SHIELD | | 8 |
| 47 | 90-0163-0000 | LEVER | | 2 |
| 64 | 90-0177-0000 | LEVER BUTTON | | 4 |
| 76 | 90-0051-0000 | CIRCLIP | | 6 |
| 78 | 90-0186-0000 | LINK GUIDE | | 1 |
| 82 | 90-0284-0000 | SPRING | | 1 |
| 91 | 90-0257-0000 | BUSH | | 1 |
| 113 | 90-0196-0000 | WHEEL | | 4 |
| 118 | 90-0068-0000 | LEVER ASSY | | 1 |
| 118a | 90-0173-0000 | LEVER | | 1 |
| 119 | 90-0069-0000 | LEVER ASSY | | 2 |
| 119a | 90-0174-0000 | LEVER | | 2 |
| 120 | 90-0070-0000 | LEVER ASSY | | 1 |
| 120a | 90-0175-0000 | LEVER | | 1 |
| 128 | 90-0266-0000 | LEVER SWITCH | | 1 |

Handle Assembly



| Ref. No | Part No | Description | Size | Qty |
|---------|--------------|----------------------------|----------|-----|
| 3 | 90-0002-0000 | CRPH SCREW | M4x8 | 1 |
| 4 | 90-0046-0000 | CRPH SCREW | M4x12 | 10 |
| 11 | 90-0005-0000 | ALLEN SCREW | M6x20 | 2 |
| 12 | 90-0006-0000 | WASHER | 6.4x18x2 | 4 |
| 23 | 02-3152-0000 | CABLE RETAINER | | 1 |
| 35 | 90-0018-0000 | CLAMP | | 1 |
| 44 | 90-0026-0000 | PULL HANDLE | | 1 |
| 48 | 90-0165-0000 | CAP | | 1 |
| 52 | 90-0168-0000 | BASE-CABLE HOLDER | | 2 |
| 57 | 90-0032-0000 | CLAMP | | 1 |
| 60 | 90-0038-0000 | NUT | | 1 |
| 61 | 90-0039-0000 | SLEEVE | | 1 |
| 65 | 90-0041-0000 | SPRING | | 6 |
| 66 | 90-0042-0000 | WASHER | | 6 |
| 71 | 90-0044-0000 | PLUG | | 2 |
| 73 | 90-0183-0000 | SELF TAPPING SCREW | | 10 |
| 85 | 90-0050-0000 | GUIDE | | 2 |
| 104 | 90-0347-0000 | PULL CABLE-P | | 1 |
| 117 | 90-0067-0000 | TOP HANDLE | | 1 |
| 126 | 90-0296-0000 | KNOB | | 2 |
| 135 | 90-0235-0000 | BOTTOM HANDLE | | 1 |
| 152 | 90-0101-0000 | GASKET | | 1 |
| 153 | 90-0103-0000 | TANK-4I | | 1 |
| 160 | 90-0110-0000 | BASE VALVE | | 1 |
| 160a | 90-0202-0000 | BASE | | 1 |
| 160b | 90-0206-0000 | SEAL | | 1 |
| 160c | 90-0210-0000 | CAP-VALVE | | 1 |
| 161 | 90-0111-0000 | VALVE | | 1 |
| 161a | 90-0203-0000 | BODY-VALVE | | 1 |
| 161b | 90-0341-0000 | SEAL | | 1 |
| 161c | 90-0229-0000 | SPRING | | 1 |
| 161d | 90-0204-0000 | CAP-SPRING | | 1 |
| 179 | 90-0092-0000 | NUT | | 1 |
| 224 | 90-0402-0000 | KNOB-CABLE HOLDER-II | | 2 |
| 225 | 90-0429-0000 | KNOB-CABLE HOLDER-I | | 2 |
| 226 | 90-0443-0000 | KNOB-TANK HOLDER-LH | | 1 |
| 227 | 90-0444-0000 | KNOB-TANK HOLDER-RH | | 1 |
| 228 | 90-0445-0000 | BASE-CABLE AND TANK HOLDER | | 2 |
| 230 | 90-0451-0000 | PIPE-LH | | 1 |
| 231 | 90-0452-0000 | PIPE-RH | | 1 |
| V4 | 90-0299-0000 | POWER CORD(UK) | | 1 |
| | 90-0273-0000 | POWER CORD (EURO) | | |

Motor, Drum and Bridge Assembly

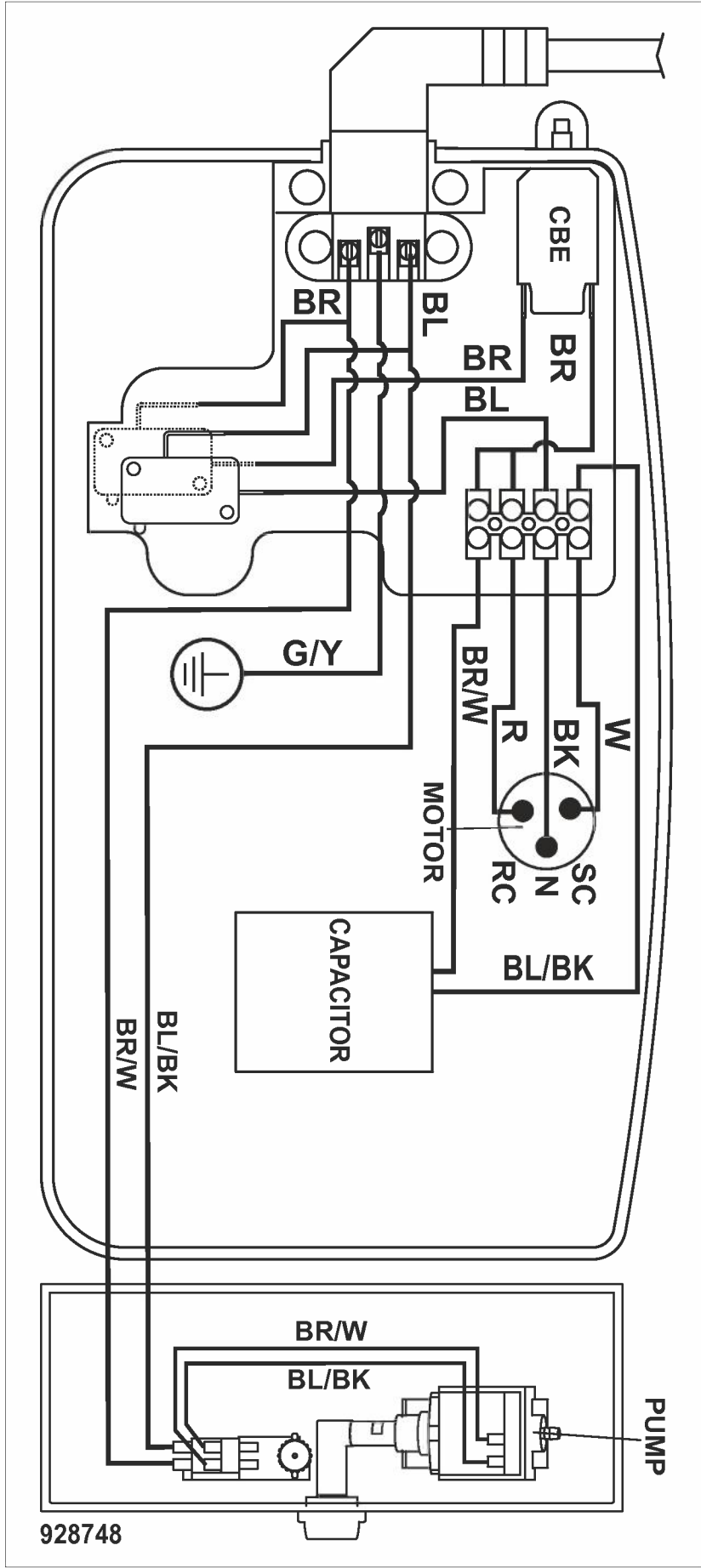


Motor, Drum and Bridge Assembly

15

| Ref. No | Part No | Description | Size | Qty |
|---------|--------------|--------------------|------------|-----|
| 5 | 90-0142-0000 | HEX NUT | M6 | 3 |
| 7 | 90-0143-0000 | CSK SCREW | M6x14 | 4 |
| 8 | 90-0004-0000 | ALLEN SCREW | M4x10 | 2 |
| 14 | 90-0146-0000 | WASHER | 5.2x10x1.6 | 2 |
| 15 | 90-0147-0000 | WASHER | 6.4x12x1.6 | 3 |
| 22 | 90-0150-0000 | GRUB SCREW | M5x12 | 2 |
| 27 | 90-0015-0000 | BUSH | | 4 |
| 28 | 90-0152-0000 | WASHER | | 4 |
| 31 | 90-0017-0000 | WASHER | | 6 |
| 37 | 90-0157-0000 | SPRING | | 1 |
| 38 | 90-0158-0000 | SPRING | | 1 |
| 50 | 90-0167-0000 | HEX SHAFT | | 2 |
| 51 | 90-0030-0000 | WASHER | | 2 |
| 54 | 90-0170-0000 | TIE ROD | | 3 |
| 55 | 90-0171-0000 | SHAFT | | 1 |
| 56 | 90-0172-0000 | ROLLER | | 6 |
| 62 | 90-0176-0000 | O' RING | | 12 |
| 67 | 90-0178-0000 | BUSH | | 2 |
| 69 | 90-0180-0000 | BUSH | | 1 |
| 70 | 90-0181-0000 | BUSH | | 1 |
| 112 | 90-0062-0000 | BRUSH SHAFT | | 2 |
| 134 | 90-0306-0000 | DRUM ASSY | | 1 |
| V1 | 90-0059-0000 | MOTOR (230V, 50Hz) | | 1 |
| V6 | 90-0198-0000 | BRIDGE | | 1 |

Electrical Diagram



Electrical layout of P model