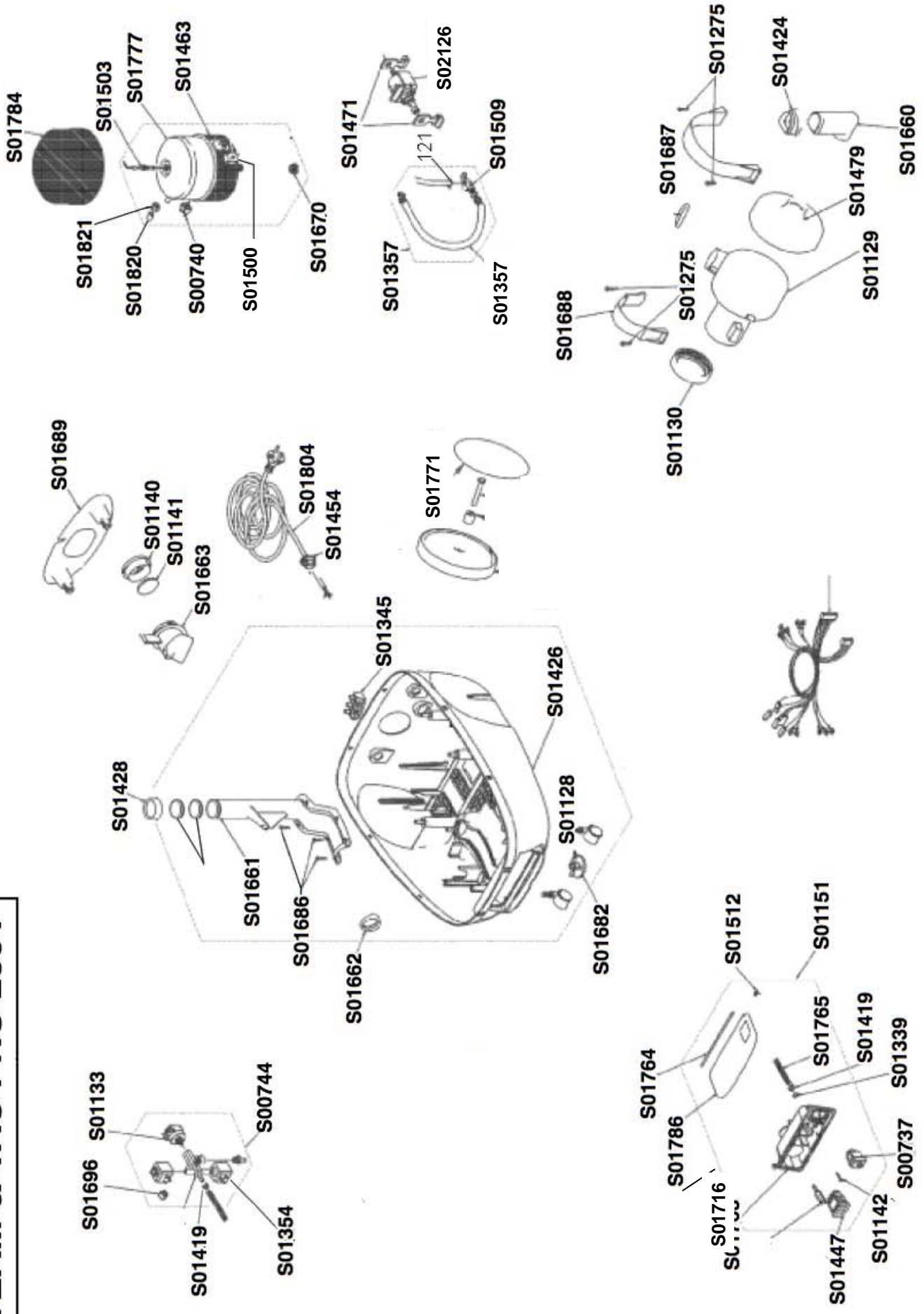


STEAM & VAC PRO (DIGITAL) SPARES MANUAL

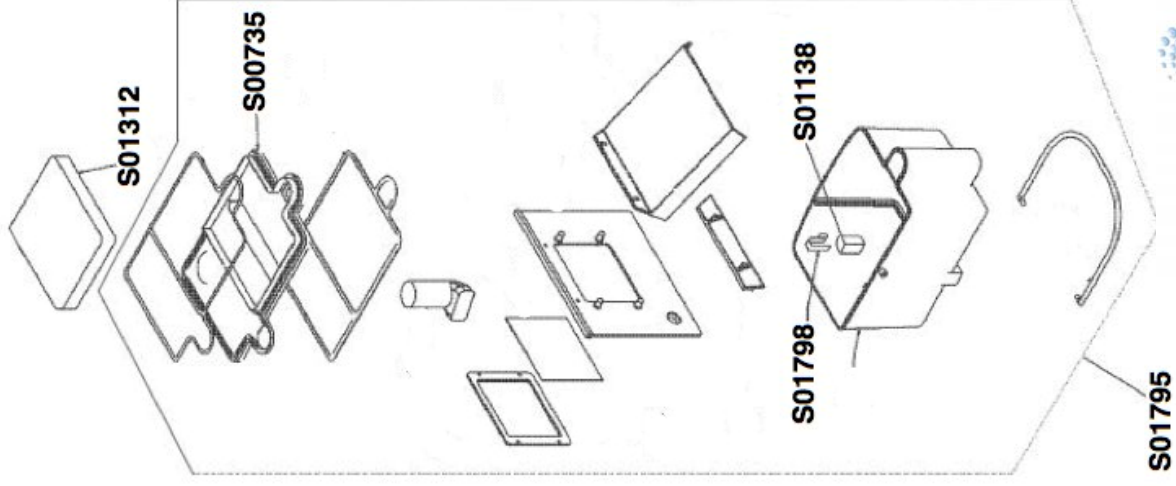
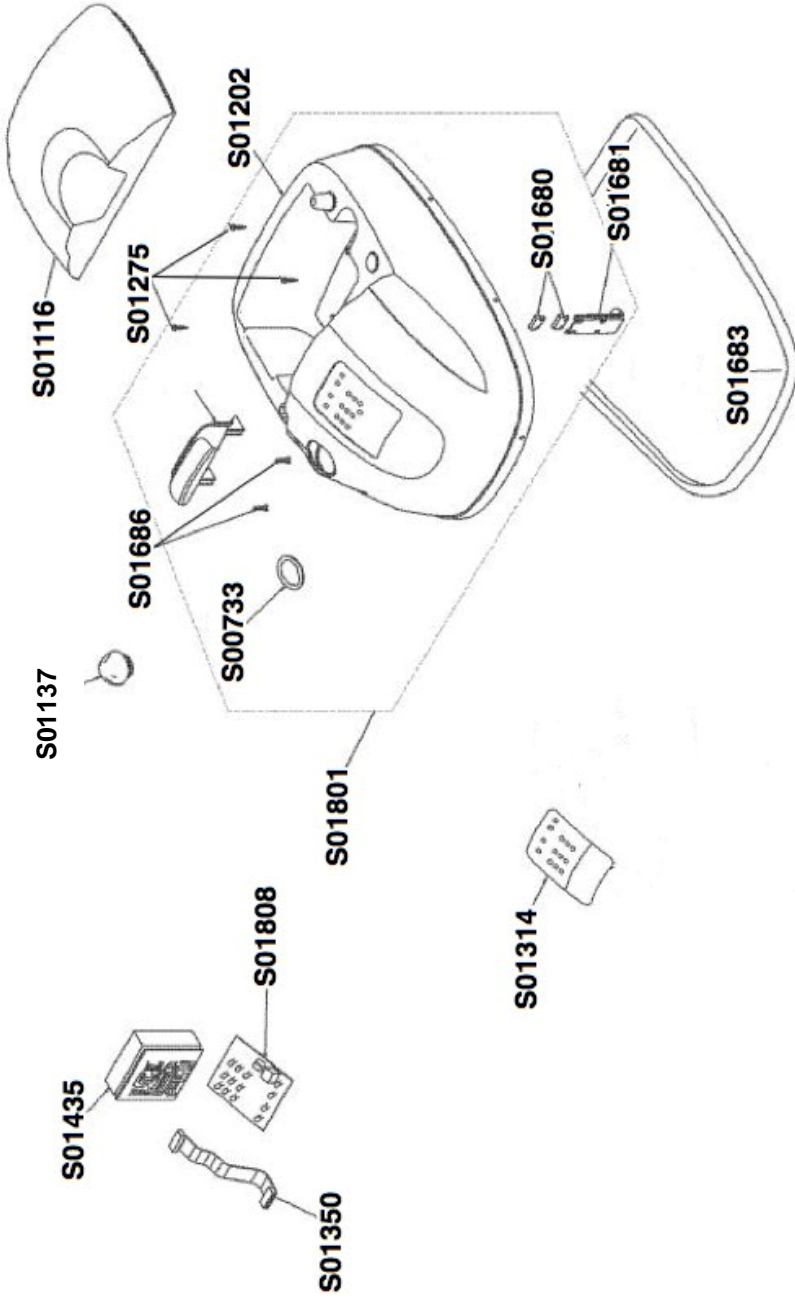
(2014)



STEAM & VAC PRO 230V



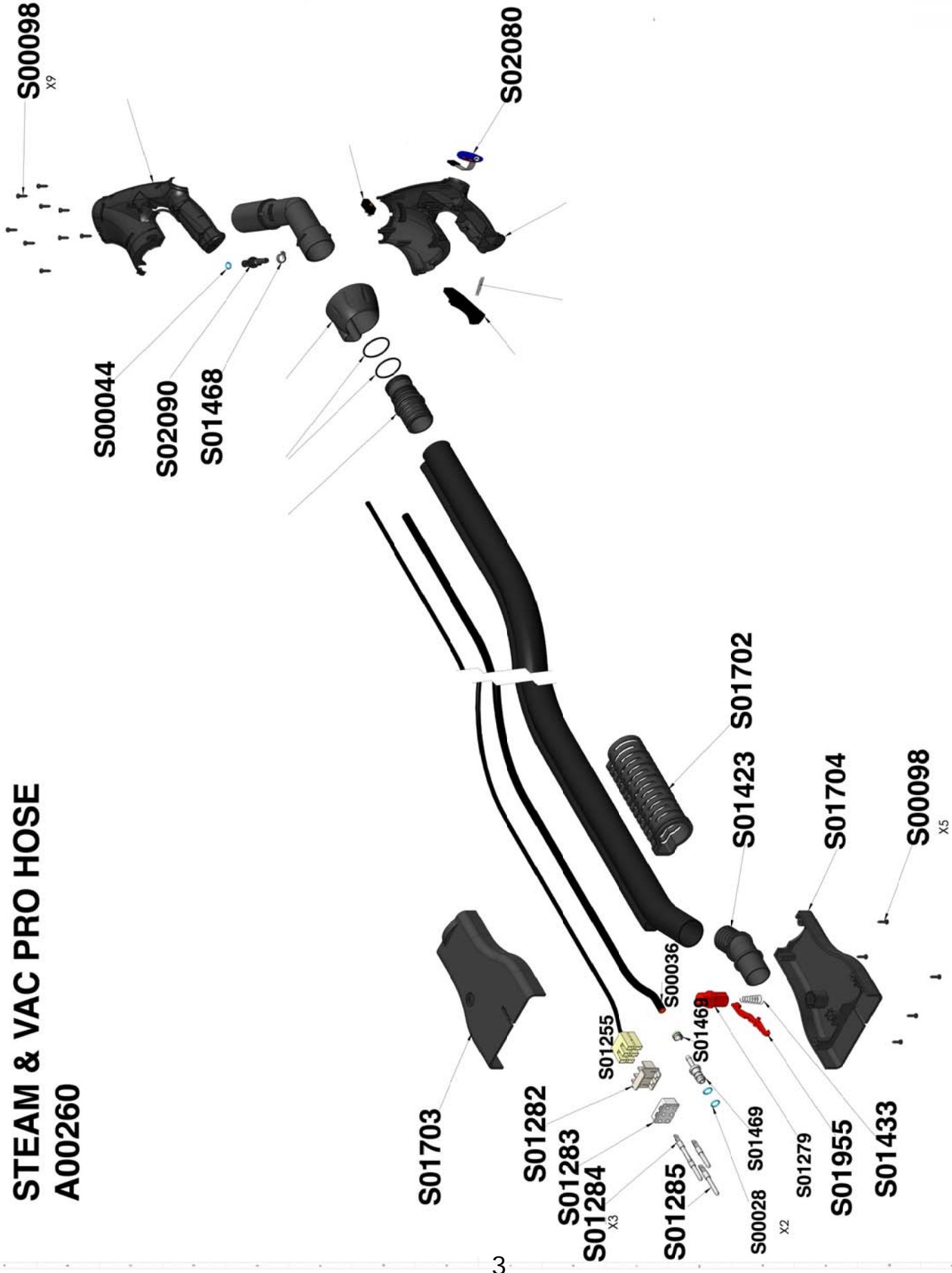
STEAM & VAC PRO 230V



OSPREYDEEPCLEAN™

V 1.0

STEAM & VAC PRO HOSE A00260

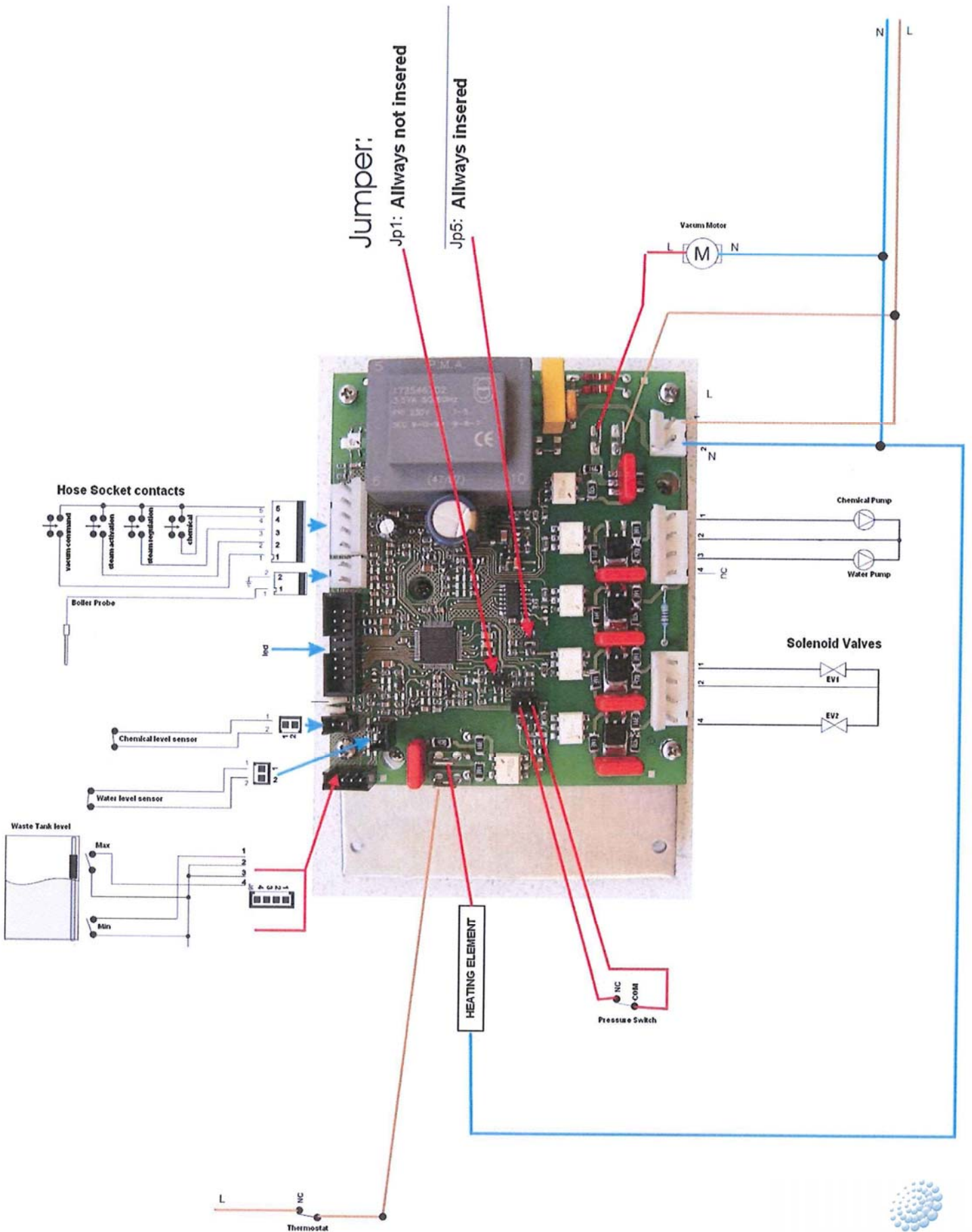


Page Num-	Part Number	Description
1	S00276	Water Pump
1	S01771	Complete Rear Wheel
1	S00737	Switch
1	S00740	Thermostat
1	S00744	Bi Valve Assembly
1	S01128	Swivelling Wheel
1	S01129	1000w Motor
1	S01130	Anti Vibration Support
1	S01133	Pressure Switch
1	S01140	Blower Plug
1	S01141	Plug Filter
1	S01142	Monobloc socket securing screw
1	S01151	Socket Assembly
1	S01275	Screw
1	S01339	Seeger Screw
1	S01345	Junction Box
1	S01354	Electrovalve Coil
1	S01357	Flexible Assembly Hose
1	S01419	Clip
1	S01424	Tank Tube Gasket
1	S01426	Lower Body
1	S01428	Gasket Vac Tube
1	S01447	Female Plug Body
1	S01454	Cable Clamp
1	S01463	Lower Heat Insulation
1	S01471	Rubber Support for Pump
1	S01479	Anti Vibration Front Support
1	S01500	
1	S01503	Olive Probe
1	S01509	Pump Valve
1	S01512	Spring for Monobloc Socket
1	S01660	Vac Joint
1	S01661	Vacuum Carter
1	S01662	Seal
1	S01663	Collect for cable winding
1	S01670	Drain Nut
1	S01682	Central Assembly
1	S01686	Screw
1	S01687	Support
1	S01688	Support
1	S01689	Cable Winder
1	S01696	Cap
1	S01716	Cover for Socket Holder
1	S01763	Support for socket monobloc
1	S01764	Pin for socket door
1	S01765	Socket monobloc tube
1	S01777	2200w assembled boiler
1	S01784	Upper thermal insulation
1	S01804	Cable with plug

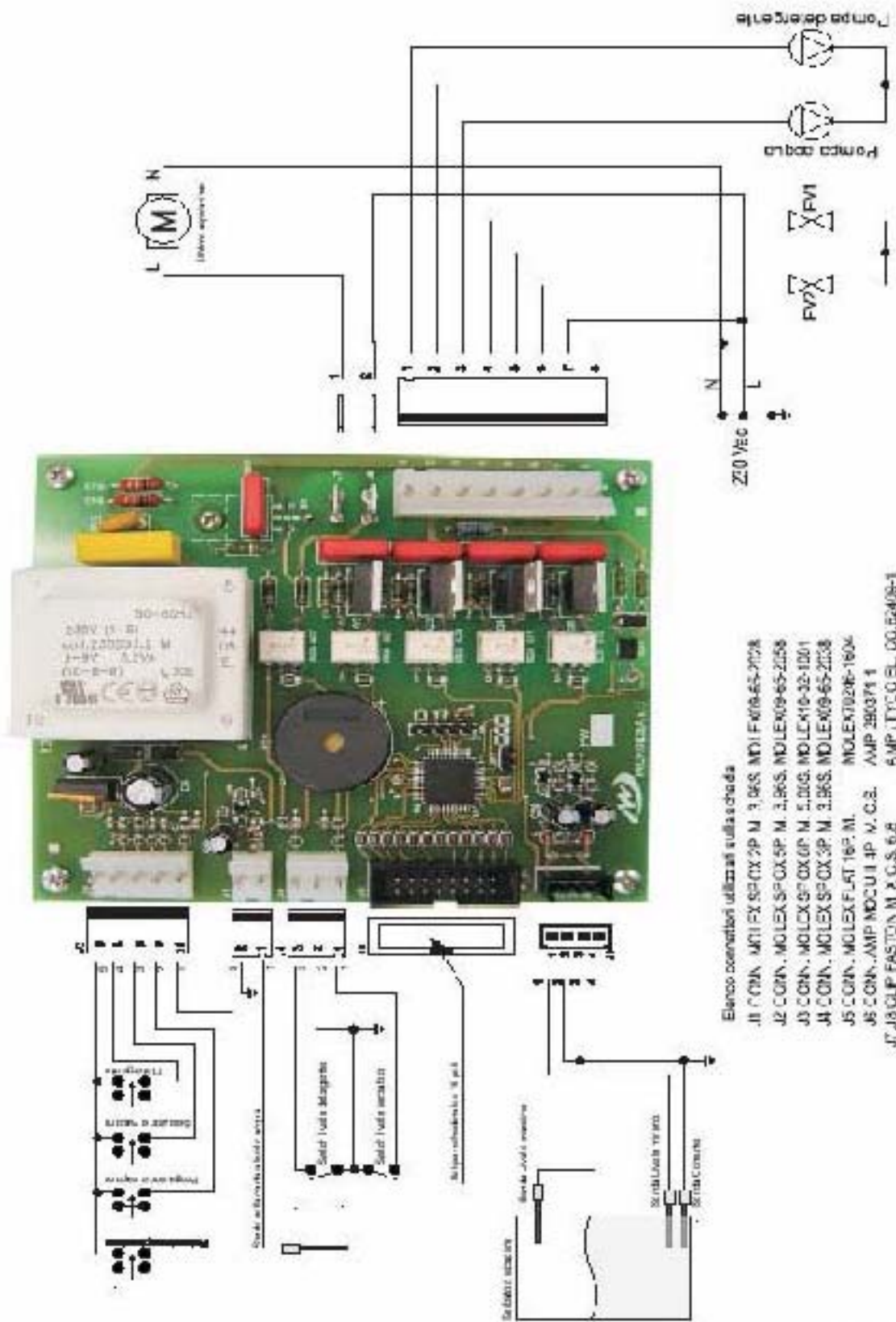


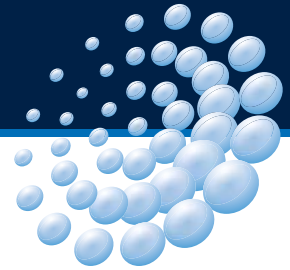
Page Number	Part Number	Description
1	S01820	Monobloc olive
1	S01821	Monobloc nut
2	A00260	Steam & Vac Pro hose
2	S00028	O Ring
2	S00036	Steam tube (per metre)
2	S00044	O Ring
2	S00098	Screw
2	S01255	6 way connector
2	S01279	Round Button
2	S01282	Plug for steam hose
2	S01283	Cover for plug
2	S01284	Plug (Male)
2	S01285	Plug (Male) 50
2	S01423	Recycle Bucket pipe
2	S01433	Spring
2	S01468	Hose Clip
2	S01469	Hose Clip
2	S01702	Guide
2	S01703	Upper Body
2	S01704	Lower Body
2	S01955	New type plastic clip
2	S02080	Handle PCB
2	S02090	Nozzle
3	S00733	Seal
3	S00735	Cover Assembly
3	S01116	Top Cover
3	S01137	Tank Cap
3	S01138	Float
3	S01202	Upper Body
3	S01275	Screw
3	S01312	Filter
3	S01314	Front Display Panel
3	S01350	Flat wiring for display
3	S01362	Water Level Sensor
3	S01435	PCB
3	S01528	Anti Limescale Filter
3	S01560	Tank Assembly
3	S01680	Reed Min Max
3	S01681	Support
3	S01683	Bumper Strip
3	S01686	Screw
3	S01795	Assembled Dirty water basket
3	S01798	Spring for float lock basket
3	S01801	Assembled Top Cover
3	S01808	PCB Display

SCHEMA CIRCUITALE MOD. 3000 230V UK 13AMP



SCHEMA CIRCUITALE MOD. 3000 / 3000D 230V SCHUKO





United Kingdom

41 Central Way

Cheltenham Trade Park

Cheltenham

Gloucestershire, GL51 8LX

T: 0044 (0) 1242 513 123

F: 0044 (0) 1242 518 666

E: info@ospreydc.com

W: www.ospreydc.com

