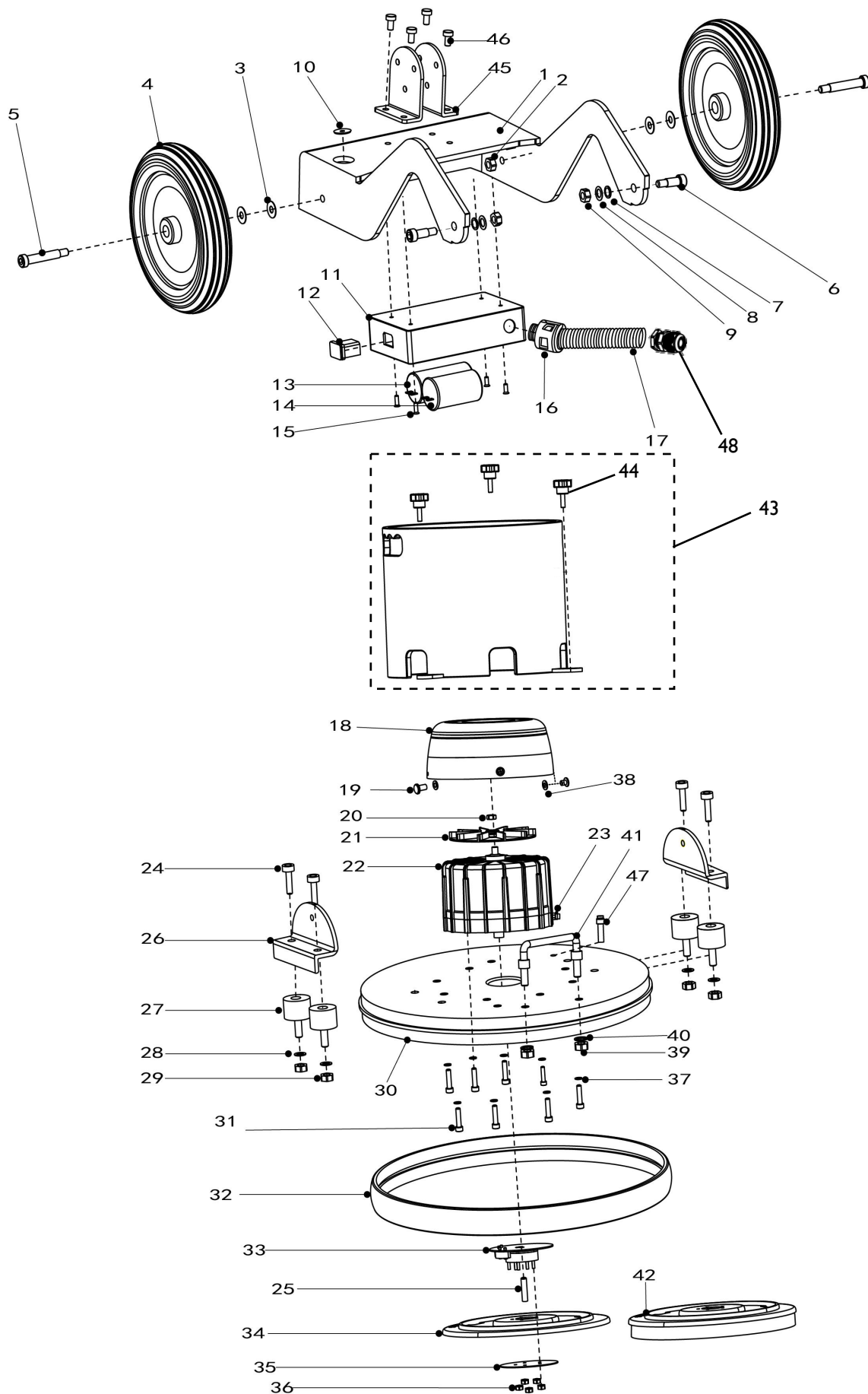


Tacony CFC		Orbis Orbital 1500 Parts List	
Part Number:		OB45 I 500	
Series:		A	
Date:		05-Sep-19	
Reference Drawing Number:		Orbital 1500 Base Assembly (Base), 09-1002-0000 (Handle)	
Reference Drawing Issue:		A	
Modified By:		J Wyles	
Service Parts List Issue:		I	ECN #
Description of Change:		-	-
Ref. No.	Part No.	Part Description	Qty
		DRAWING REF: Orbital 1500 BASE ASSEMBLY	
1	2030055	Chassis	1
2	00-1000-072 I	M10 Nyloc Nut BZP	2
3	00-1000-050 I	M10x20 Plain Washer BZP	4
4	2010027	Wheel	2
5	9090047	Wheel Axle Bolt	2
6	9090046	Base Casting Bolt	2
7	2020007	Plastic Washer	2
8	9290010	Washer M10 Plain SS304	2
9	00-1000-072 I	M10 Nyloc Nut BZP	2
10	2010048	Hole Insert	1
11	2010026	Capacitor Cover	1
12	2040024	Inlet Socket	1
13	2040015	Start Capacitor 150uF	1
14	2040014	Run Capacitor 25uF	1
15	00-0416-003 I	M4x16 CSK Pozi Screw StSt	4
16	2010045	Hose Connector	1
17	2010044	Cable Protection hose	1
18	2030059	Motor Cover	1
19	9090035	Screw M5x10 Cross Recess Wide Head SS304	4
20	9190002	Nut(Cooling Fan)	1
21	2010020	Cooling Fan	1
22	2040006	Kit containing Motor and items: 13 (start cap), 14 (run cap), 17 (hose), 20 (Nut), 23 (Clip), 48 (Cable Gland).	1
23	2030056	Hose Clip	1
24	02-4635-0000	Screw M10x15 Socket Button head SS304	4
25	9090036	Screw for Orbital	1
26	2030057	Bottom Support Bracket	2
27	03-8496-0000	Anti-vibration Mount Male/Female 40x30xM10 (DxHxG)	4
28	9290010	Washer M10 Plain SS304	4
29	00-1000-072 I	M10 Nyloc Nut BZP	4
30	2030058	Base Casting	1
31	9090039	Screw M6x54 Blck Allen SS304	8
32	2020006	Rubber Buffer	1
33	2060015	Orbital Component	1
34	9560017	OB Pad Holder	1
35	2030039	Aluminum Disc	1
36	00-0600-072 I	M6 Nyloc Nut StSt	5
41	2030067	Metal Handle	1
42	9560020	Scrubbing Brush (optional accessory)	1
43	2030071	OB-Extra Weight 12.5kg (optional accessory)	1
44	9090058	Wrench Free Screw (optional accessory)	3
45	2030070	Pivot Bracket	2
46	9090023	Screw	4
47	2010024	Solution Feed Connector	1
48	02-4637-0000	Cable Gland Black PG I I	1



Tacony CFC

Orbis Orbital 1500 Base Assembly

Part Number:

OB451500-1000

Date: 05-Sep-19

Sheet no.

Drawing Number: Orbital 1500 Base Assembly

I / I

Drawing Issue: A

DESCRIPTION OF CHANGE

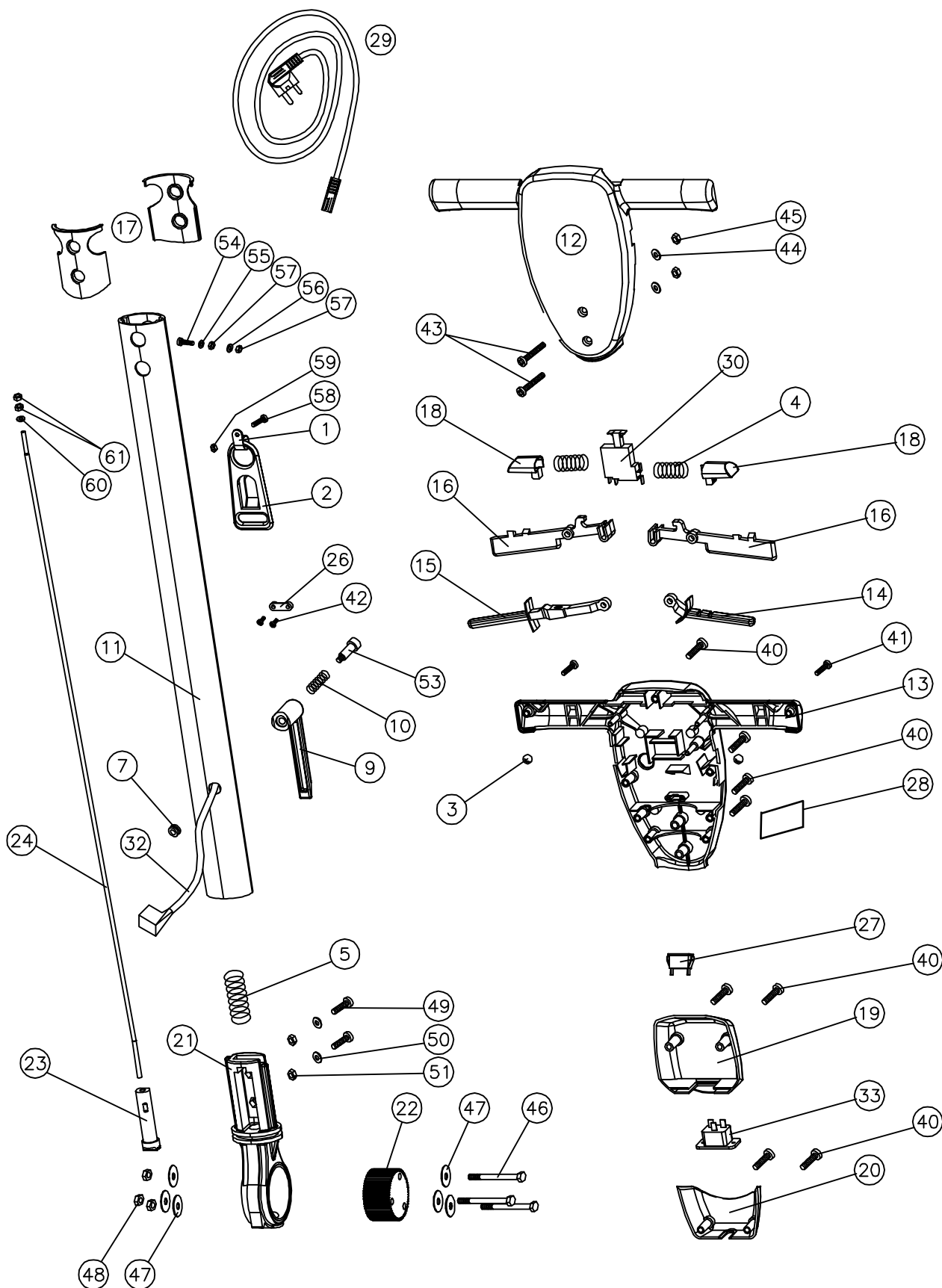
ECN #

Modified By: J Wyles

-

-

Ref. No.	Part No.	Part Description	Qty
		DRAWING REF: 09-1002-0000 - HANDLE ASSEMBLY	
.	02-3151-0000	P Clip	1
2	02-3152-0000	Cable Strain Relief Bracket	1
3	02-3186-0000	Ball bearing	2
4	02-3510-0000	Handle Interlock Spring	2
5	02-3511-0000	Gear dog Spring	1
7	02-3520-0000	Diaphragm Grommet	1
9	03-5403-0000	Cable winder	1
10	03-5410-0000	Cable Winder Spring	1
11	03-8332-0000	Tube - handle aluminium ext.	1
12	03-6086-0067	Handle main - front Jet Black	1
13	03-6087-0067	Handle main - rear Jet Black	1
14	03-6088-0067	Solution Lever Jet Black	1
15	03-6089-0067	Gear lever Jet Black	1
16	03-6090-0067	Trigger left and right Jet Black	2
17	03-6091-0000	Handle Rubber boot	2
18	03-6092-0067	Interlock Jet Black	2
19	03-6093-0067	Cord inlet box Jet Black	1
20	03-6094-0067	Cord retainer Jet Black	1
21	03-7831-0000	Aluminium Knuckle	1
22	03-6096-0000	Gear	1
23	03-6097-0000	Dog	1
24	03-8389-0000	Adjusting Gear Rod	1
26	04-0237-0000	Cable clamp	1
27	04-3254-0000	Neon Indicator Green	1
28	03-6693-0067	Handle Socket Blanking Plate	1
29a	04-3055-0053	Supply Cord Set	1
29b	04-3055-0153	Europlug Supply Cord Set	1
30	04-3237-0000	Switch	1
Not Shown	04-3937-0000	Handle Wiring Kit Without Power Take Off	1
32	04-4015-0000	Drop Lead with C2 Connector for OB451500	1
33	04-3242-0000	16Amp Inlet Socket	1
Not Shown	10-0123-0000	Orbis Handle Power Take Off Kit (optional Accessory)	1
		Fasteners	
40	02-3516-0000	Self Tapper (Main Handle / Cord Inlet Box)	11
41	02-3517-0000	Self Tapper (Handle Ends)	2
42	02-3518-0000	Self Tapper (Cable Clamps)	2
43	00-0650-0011	Handle Tube Fix M6 x 55 Pozi Pan Head Screw	2
45	00-0600-0701	Handle Tube Fix M6 Full Nut	2
46	00-0860-0121	Handle Attachment Bolt M8 x 60 Hex Head Bolt	3
47	02-0223-0000	Handle Attachment Washer Zinc Washer 5/16" x 1 1/4"	6
48	00-0800-0751	Handle Attachment Nut M8 Type "T" 1/2 Nyloc Nut	3
49	00-0816-0111	Knuckle Bolt M8 x 16 Hex Head	2
50	00-0800-0501	Knuckle Washer M8 "A" Form Washer	2
51	00-0800-0731	Knuckle Nut M8 Binx Nut	2
53	02-3523-0000	New Cable Winder Bolt Socket Shoulder Bolt M6 x 8 x 40	1
54	00-0520-0111	Earth Mount on Handle M5 x 20 Hex Head	1
55	00-0500-0531	Earth Mount on Handle Serrated Washer M5 External	1
56	00-0500-0511	Earth Mount on Handle Spring Washer M5 Single Coil	1
57	00-0500-0701	Earth Mount on Handle Fixing Nuts M5 Full Nut	2
58	00-0520-0111	Cable Restraint Bolt M5 x 20 Hex Head Screw	1
59	00-0500-0701	Cable Restraint Nut M5 Full Nut	1
60	00-0500-0501	Gear Rod Washer M5 Washer	1
61	00-0500-0701	Gear Rod Nuts M5 Full Nut	2



Tacony CFC

Orbis Orbital 1500 Handle Assembly

Part Number:

05-4766-0000

Date: 05-Sep-19

Sheet no.

Drawing Number: 09-1002-0000

I / I

Drawing Issue: A

DESCRIPTION OF CHANGE

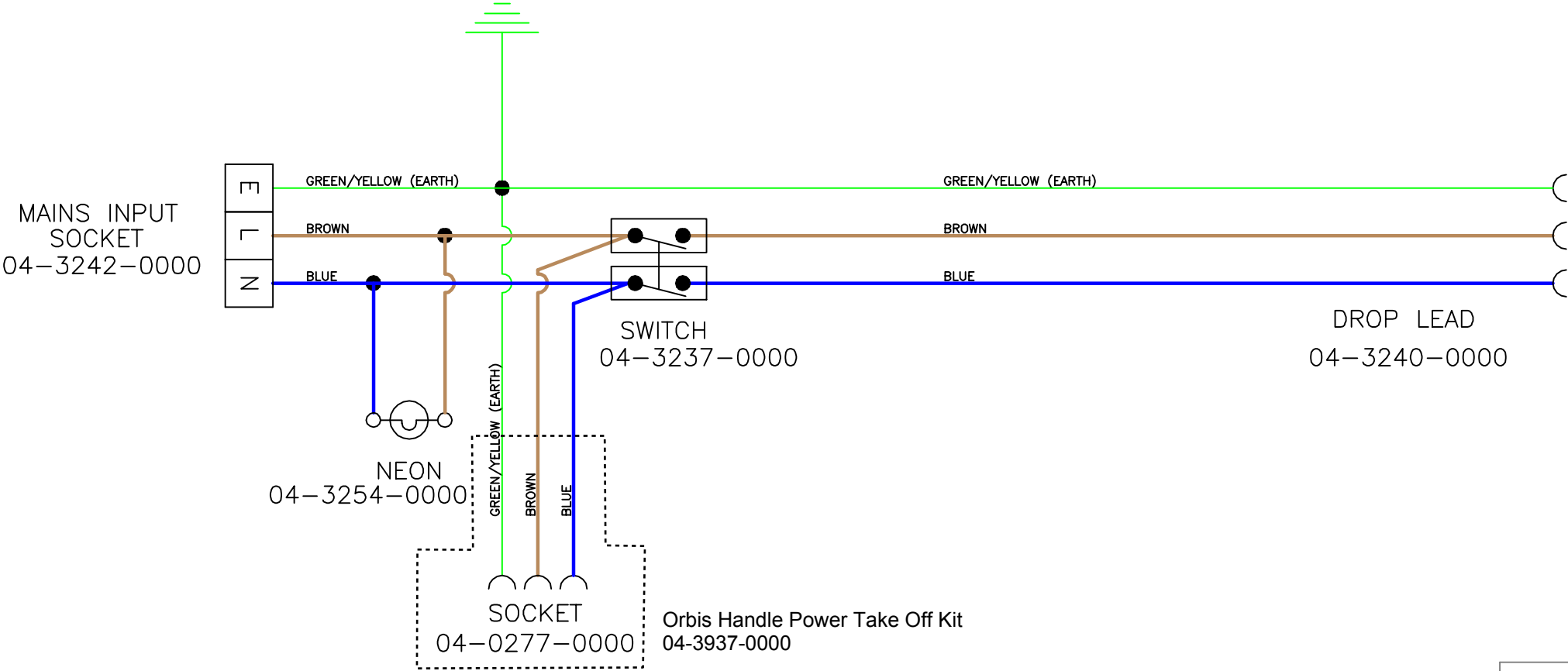
ECN #

Modified By: J Wyles

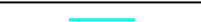

-

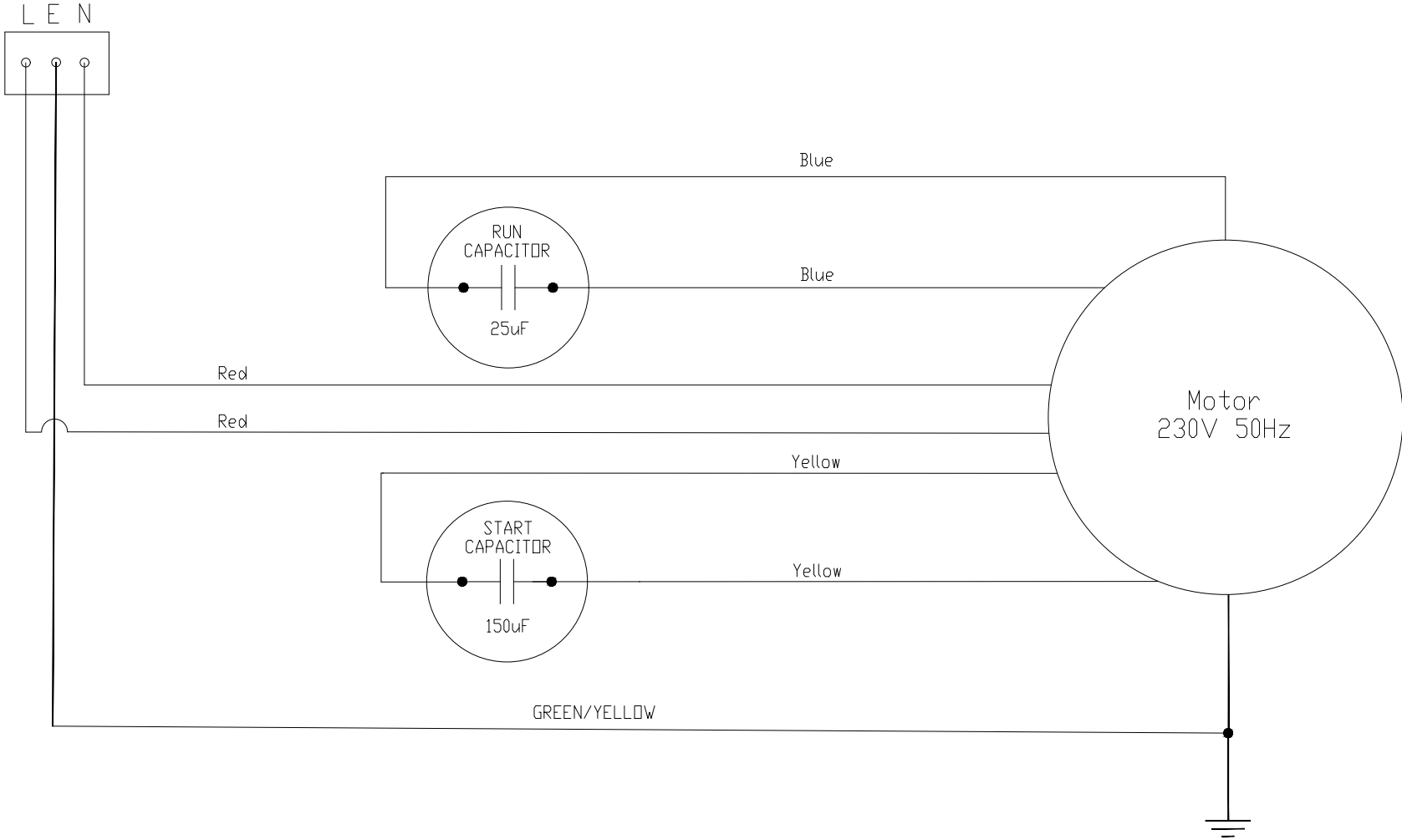
-

Issue	Amendments	Sig./Date
A	NEW DRAWING	15.12.10 M.D.C.
B	OPTIONAL POWER TAKE OFF KIT	03.09.13 N.P.D



RED
ON
MASTER

 3RD ANGLE PROJECTION DIMENSIONS IN MILLIMETRES DO NOT SCALE DRAWING ©COPYRIGHT			Material	General Tolerance	TRUVOX TM INTERNATIONAL LIMITED	
	Finish		Scale	Title		Drawing/Part Number
	Drawn M.D.C.		Checked M.D.C.	Date 15.12.10	ORBIS HANDLE WIRING DIAGRAM (230V 50Hz) 09-1127-0000	



					MATERIAL:	GEN	TOL	TRUVOX INTERNATIONAL LIMITED	
						X	±0.5		
						X.X	±0.2		
						X.XX	±0.1		
						ANG	±0.5°		
					FINISH:	SCALE:	X : X	TITLE:	PART NO.
1	N/A	NEW DRAWING	JW	13-Sep-19		DRN	CKD	ORBIS ORBITAL 1500 BASE WIRING DIAGRAM	09-1166-0000
ISSUE	ECN	CHANGES	INT	DATE		JW			