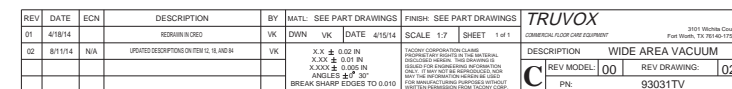


Taony CFC		Valet Wide Area Vac	
Part Number:	VWAV		
Date:	19-Feb-18		
Reference Drawing number:	93031TV		
Reference Drawing Issue:	02		
Modified By:	J WYLES	DESCRIPTION OF CHANGE	ECN #
Service Parts List Issue:	E	-	-

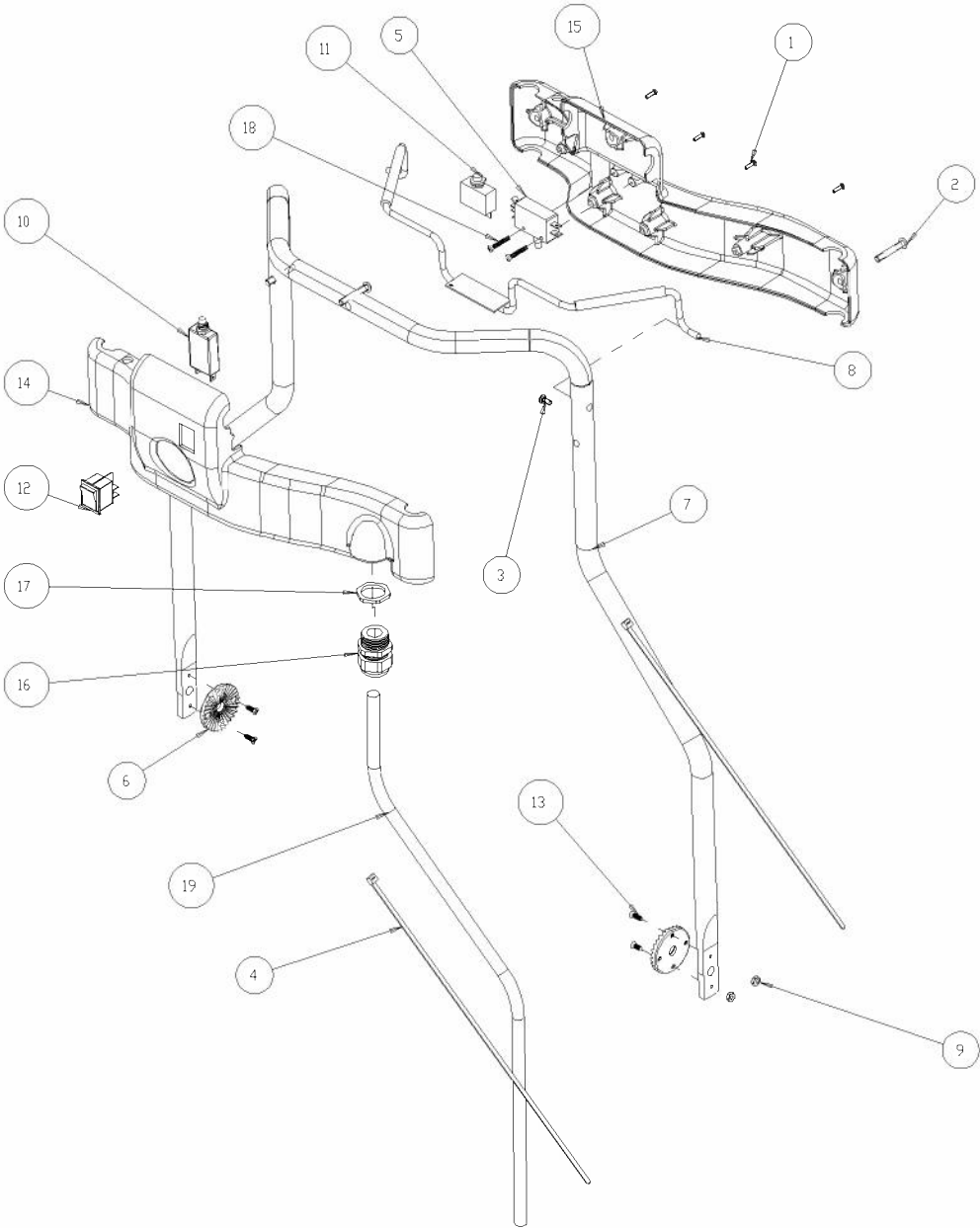
Ref. No.	Part No.	Part Description	Qty
1	33036	CHASSIS	1
2	30077	GASKET, BRUSH SHOE	2
3	33193	FILTER CHUTE	1
4	33195	SCREW, #10-16 X 3/4"L, PNHD, PH, BO, TAP-AB	4
5	19798	BRACKET, GROOVED	4
6	15162	SCREW, 1/4"-20 X 1/2"L, FHD, PH, ZP	2
7	12896	SCREW, #10-32 X 5/8"L, RHDHD, PH, ZP	4
8	19836	MOUNT, BRUSH MOTOR	1
9	33070	BRIDGE RECTIFIER, 25 A	1
10	33451	SCREW, #10-24 X 5/8"L, PNHD, PH, ZP, TAP-F	1
11	1978	SCREW, 1/4"-20 X 1-1/2"L, RHDHD, PH, ZP	3
12	33501	BRUSH MOTOR, 230V	1
13	7CY002	WASHER, 0.25", LOCK, INTERNAL TOOTH, ZP	2
14	19835	PULLEY, BRUSH, DRIVE	1
15	30079B	GASKET, LID WAV	1
16	PD8	STRAIN RELIEF, LIQ TITE	1
17	30090	GASKET, 5.8" MOTOR	2
18	31306	MOTOR, VACUUM, 230V, 5.8"	2
19	19834	FILTER, VAC INTAKE, 5.8"	2
20	86	SCREW, 1/4"-20 X 1/2"L, RNDHD, PH, ZP	10
21	30620	SCREW, #10-16 X 3/4"L, PNHD, PH, ZP, TAPTITE	8
22	30491	BRACKET, AXLE ASS'Y, WAV	1
23	19841	ARM, WHEEL PIVOT	2
24	30461	PIVOT SLEEVE, WHEEL	2
25	30617	SCREW, 1/4"-20, SHCS, SHOULDER 5/16"D X 3/4"L	2
26	19818	SPRING, WAHSER, 1/2"	2
27	30466	SPRING, TENSION	2
28	19797	WHEEL, 10", PLASTIC HUB	2
29	30507	SNAP RING, 1/2", EXTERNAL	2
30	33500	LID	1
31	19864	PIN, LID HINGE	2
32	33105	CAM LEVER PIN	2
33	15357	SPRING, LATCH RELEASE	2

34	33191	STRAIN RELIEF, LIQ. TITE	3
35	3536	WASHER, 0.375", LOCK, SPLIT, ZP	2
36	30358	NUT, 3/8"-16, HEX, JAM, ZP	2
37	31209	WHEEL, CASTER	2
38	33057A	BELT COVER	1
39	30618	DECAL, CARPET LEVEL *	1
40	33505	POWER CORD UK, 14AWG, 3COND, 75'L, MALE PL	1
40a	04-3989-0000	POWER CORD EURO, 14AWG, 3COND, 75'L, MALE PLUG	1
41	19816	FILTER BAG, CLOTH	1
42	90701	FILTER BAG PAPER	1
43	18706	WIRE TIE, 15", BLACK	1
44	4735	SCREW, #10-32 X 3/4"	2
45	7535	SCREW TFT (A) R.H.	4
46	19616	WASHER, 0.563", PLAIN, SS	4
47	33106	CAM METAL WASHER	2
48	16924	SCREW, #6-32 X 3/4"L, PNHD, PH, ZP	4
49	19854G	COVER, EXHAUST	1
50	BA00163582	CORD RETAINER BLACK	1
51	1604	NUT-FINISHED HEX #10-32	2
52	19855	EXHAUST FILTER	1
53	19975	NUT-WING (10-32) ZINC PL	2
54	33117	SCREW, #6-13 X 1.25" PLASTITE	2
55	X8008N	NUT-CONDUIT	2
56	33502	GASKET, CHUTE	1
57	33103	CAM PLASTIC WASHER	2
58	3321	WASHER, 0.391", PLAIN, ZP	2
59	19461	STRAIN RELIEF 1/2" NPT	1
60	17376	NUT-HEX. LOCK (KEPS) #6-32	2
61	14142	WASHER, 0.265", PLAIN, ZP	1
62	B123-2700	WIRE CONNECTOR	2
63	33192	NUT, LOCK, STRAIN RELIEF, NI-PLATE	3
64	X9497	DECAL, RECTANGLE	1
65	X9498	DECAL LARGE ROUND	1
66	19808	AXLE, BRUSH	1
71	19848	THREAD GUARD	2
72	32896	GASKET	2
74	02011	SCREW, 1/4"-20 X 5/16"L, SET, ALLEN, CUPPNT	3
75	19802	BELT, BRUSH DRIVE	1
76	19829	HANDLE, MAIN	1
77	33190	SWITCH BOX, BOTTOM	1
78	19849	TRIGGER, BRUSH SWITCH	1
79	X9582	SCREW, #8-32 X 1/2"L, FHD, PH, ZP, TAP-F	4

80	33189	SWITCH BOX, TOP	1
81	X9499	DECAL, SMALL CIRCLE	1
82	32966	SWITCH, ROCKER, DPST, 20A	1
83	19357	SWITCH, PUSH BUTTON, DPST, 20A	1
84	31368	CIRCUIT BREAKER, PUSH BUTTON, 1.6A	1
85	33452	CONTROL CABLE	1
86	30464	PIVOT SLEEVE, WHEEL	2
87	851	WASHER-PLAIN 1/4"	4
88	11276A	SCREW, 1/4"-20 X 7/8"L, FHD, PH, ZP	1
89	30074	NUT, HEX #8-32 ZP	4
90	3660	SCREW, #10-24 X 7/16"L, PNHD, PH, ZP	4
91	32964	10 AMP CIRCUIT BREAKER	1
92	10892	NUT-HEX LOCK #10-24	2
93	X9214	GROUND LABEL	2
94	16142B	SCREW, #8-18 X 3/8"L, PNHD ,PH ,ZP, TAP-AB	4
95	3261	SCREW, TCT(F) PAN HEAD, #10-32	2
96	33114	SCREW, #8-32 X 1/2"L, FHD, SOCKET, BO	8
97	33104	METAL STUD, CAM LEVER	2
98	33630	SCREW, #10-32 X 1-3/4"L, FHD, PH, ZP	2
99	19999	SCREW, 1/4"-20 X 1-1/4"L, RHDHD, PH, ZP	2
100	33102	CAM LEVER HANDLE	2
101	33508	EMI FILTER, MOTOR	1
102	33506	EMI FILTER, POWER	1
103	33628	CAPACITOR, EMI FILTER	1
104	2625	NUT-HEX. LOCK (KEPS) #10-32	4
105	11385	WASHER, SEALING #10	6
106	33504	WIRING HARNESS	1



BILL OF MATERIALS			
ITEM	QTY	PART NUMBER	DESCRIPTION
1	4	16924	SCREW, #6-32 X 3/4"L, PAN HEAD
2	3	01978	SCREW, 1/4"-20 X 1-1/2"L, RHDHD, PH, ZP
3	1	03261	SCREW, TCT(F) PAN HEAD, #10-32
4	4	18706	WIRE TIE, 15", BLACK
5	1	19357	SWITCH, PUSH BUTTON, DPST, 20A
6	2	19798	BRACKET, GROOVED
7	1	19829	HANDLE, MAIN
8	1	19849	TRIGGER, BRUSH SWITCH
9	4	30074	NUT, HEX #8-32 ZP
10	1	31368	CIRCUIT BREAKER, PUSH BUTTON, 16A
11	1	32964	10 AMP CIRCUIT BREAKER
12	1	32966	SWITCH, ROCKER, DPST, 20A
13	4	33188	SCREW, #8-32 X 1/2"L, FHD, PH, ZP, TAP-F
14	1	33189	SWITCH BOX, TOP
15	1	33190	SWITCH BOX, BOTTOM
16	1	33191	STRAIN RELIEF, LIQ. TITE
17	1	33192	NUT, LOCK, STRAIN RELIEF, NI-PLATE
18	2	33194	SCREW, #6-13 X 1L, PNHD, PH, ZP, PLASTITE
19	1	33452	CONTROL CABLE

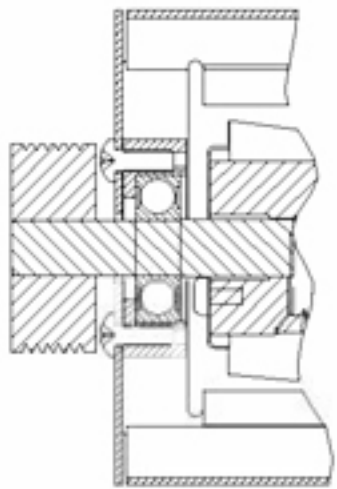


REV	DATE	ECN	DESCRIPTION	BY	MATERIAL	FINISH	Tacony		3101 Wichita Court	
A	4/08	10787	NEW RELEASE	KM	DWN KM	DATE -	SCALE -	SHEET 1 OF 1	Fort Worth, TX 76140-1755	
B	4/24/09	-	NEW RELEASE	AR	UNLESS OTHERWISE NOTED ALL TOLERANCES ARE ±0.02		TACONY CORPORATION CLAIMS PROPRIETARY RIGHTS IN THE MATERIAL DISCLOSED HEREIN. THIS DRAWING IS ISSUED FOR ENGINEERING INFORMATION ONLY. IT MAY NOT BE REPRODUCED, NOR MAY THE INFORMATION HEREIN BE USED FOR MANUFACTURING PURPOSES WITHOUT WRITTEN PERMISSION FROM TACONY CORP.		DESCRIPTION	
C	1/15/14		CHANGED CIRCUIT BREAKER	VK					HANDLE, WAV, 230V	
								PART NUMBER		REV C
								19984		

PART NUMBER  
**19870**

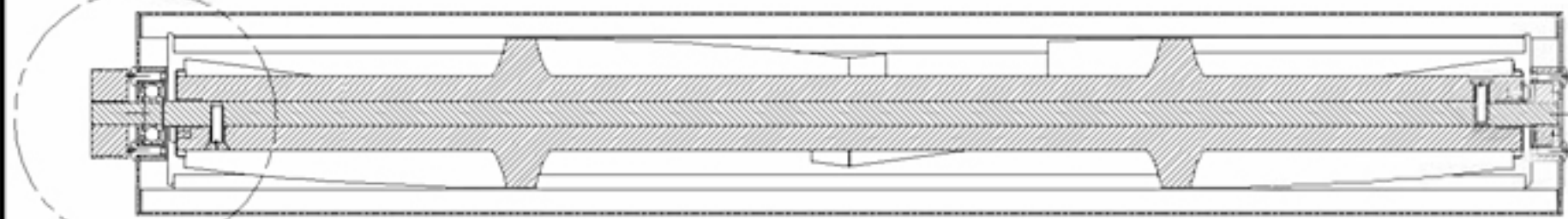
BILL OF MATERIALS

ITEM	QTY	PART NO.	DESCRIPTION
1	2	02011	SCREW, 1/4"-20 X 5/16"L, SET, ALLEN, CUPPNT, BD
2	4	07535	SCREW, #8-18 X 3/8"L, FNHD, PH, ZP, TAP-AB
3	2	11276	SCREW, 1/4"-20 X 7/8"L, FHD, PH, ZP
4	4	16142	SCREW, #10-32 X 1/2"L, FNHD, PH, ZP
5	1	19804	PULLEY, BRUSH, DRIVEN
6	2	19805	BEARING BLOCK
7	1	19808	AXLE, BRUSH
8	2	19809	BEARING, SEALED, 6201-2RS
9	1	19810	SHOE, BRUSH MOUNT
10	1	19811	BRUSH, 28"
11	2	19848	THREAD GUARD
12	2	32896	GASKET
13	1	X1298	BRUSH ROLL ASSEMBLY
14	2	07858	SPRING FINGER (2 PER)

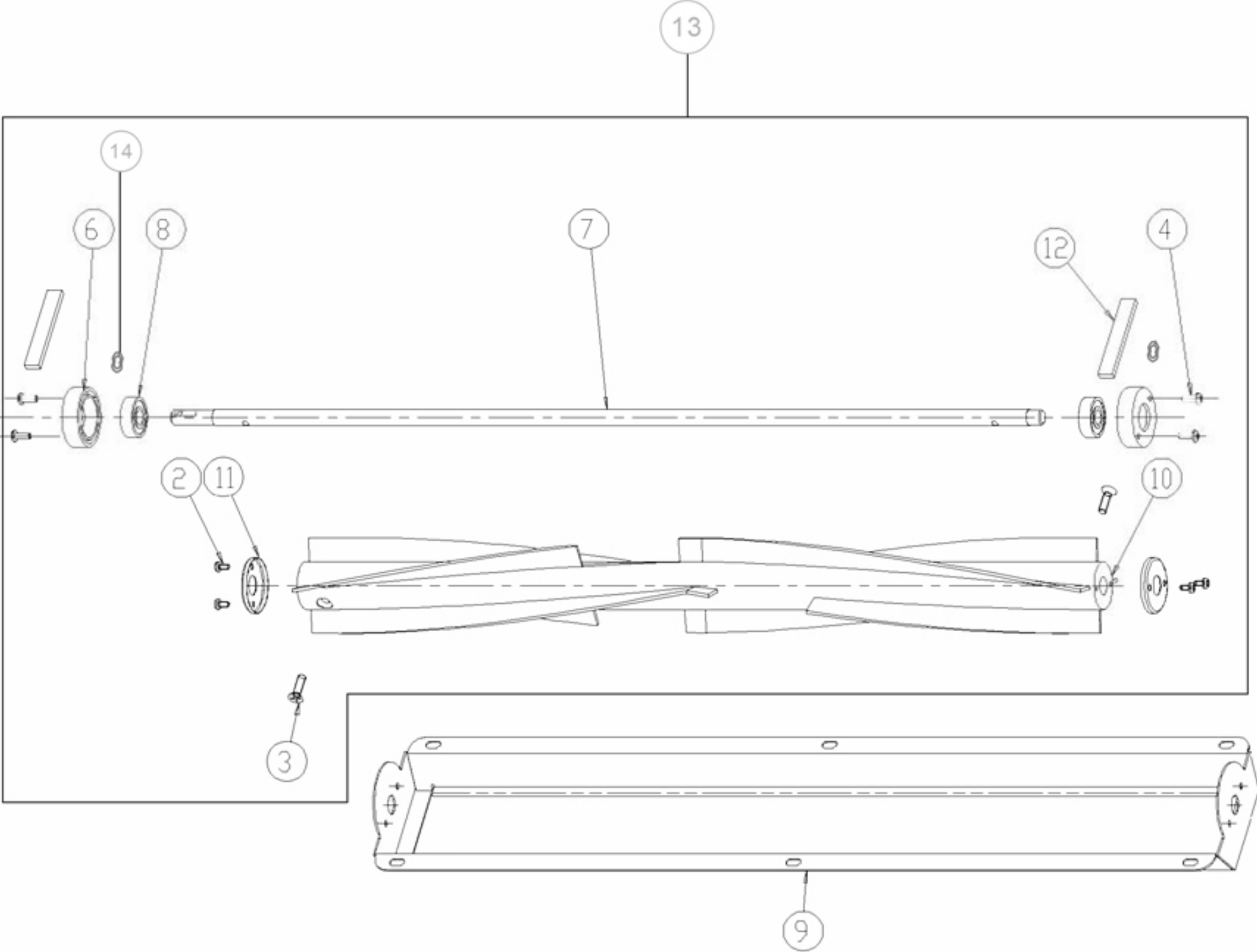


DETAIL A  
SCALE 1:1

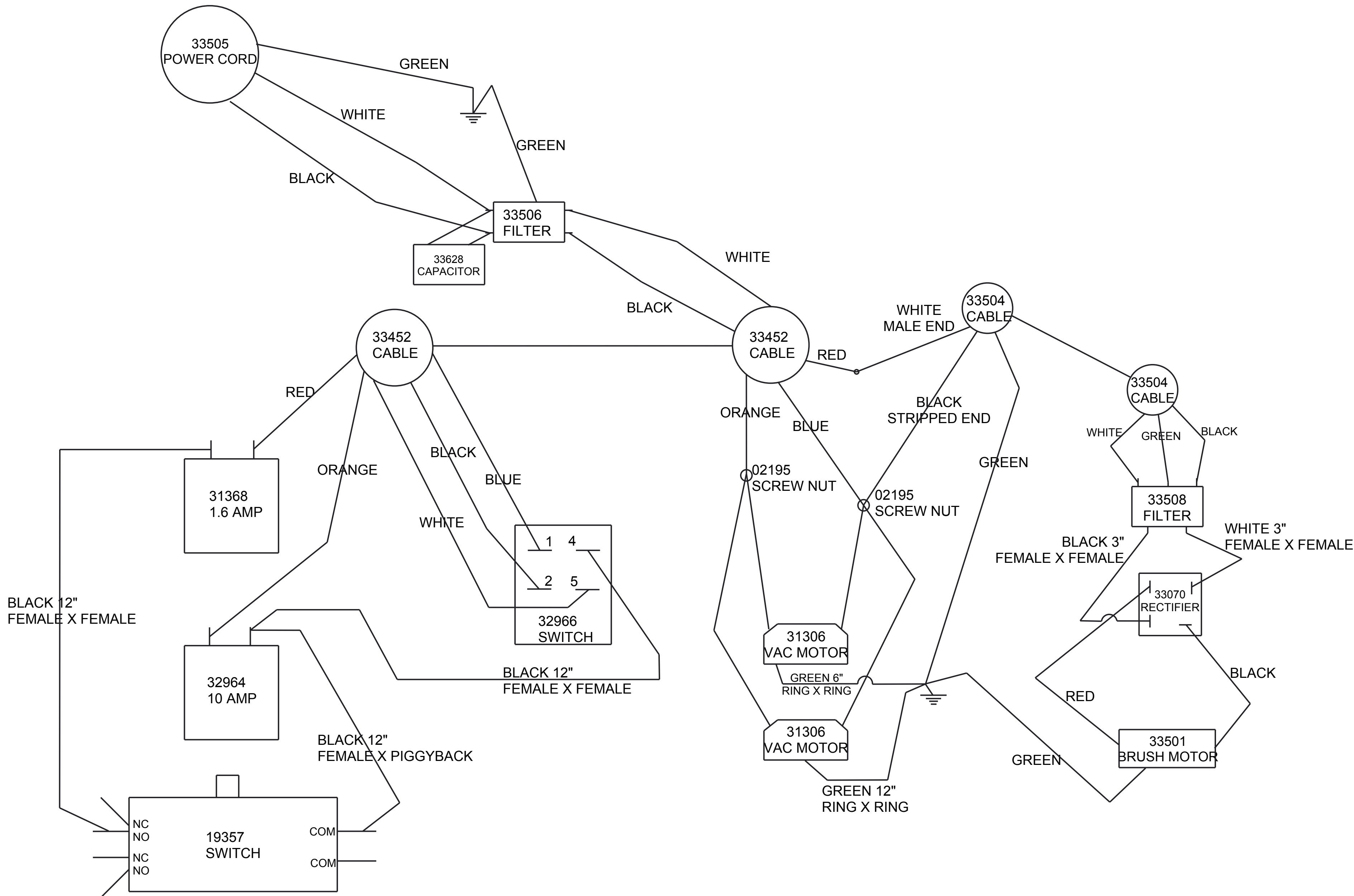
SEE DETAIL A



SECTION A-A



REV	DATE	ECN	DESCRIPTION	BY	MATERIAL		FINISH		<div>Tacony</div> <div>COMMERCIAL FLOOR CARE</div>		3101 Wichita Court Fort Worth, TX 76140-1755	
E	06/07	10741	REMOVED 19838	TNC	DWN OM	DATE 05/98	SCALE NTS	SHEET 1 OF 1				
D	02/00	10297	REMOVED 19837 & 19806 ADDED 07535 & 19848	XAZ	UNLESS OTHERWISE NOTED ALL TOLERANCES ARE ±0.02		TACONY CORPORATION CLAIMS PROPRIETARY RIGHTS IN THE MATERIAL DISCLOSED HEREIN. THIS DRAWING IS ISSUED FOR ENGINEERING INFORMATION ONLY. IT MAY NOT BE REPRODUCED, NOR MAY THE INFORMATION HEREIN BE USED FOR MANUFACTURING PURPOSES WITHOUT WRITTEN PERMISSION FROM TACONY CORP.		DESCRIPTION ASS'Y, BRUSH, WAV			
C	12/99	10104	REMOVED 19848	TH					A	PART NUMBER	19870	REV



★ STAR DENOTES CRITICAL DIMENSION

REV		DATE	ECN	DESCRIPTION	BY	CBY	MATL	SEE PARTS		FINISH	SEE PARTS		TRUVOX	
01	8/19/14	N/A		UPDATED BREAKER FROM 32935 TO 31368	VK	KK	DWN	KM	DATE	02/08	SCALE	-	SHEET	1 of 1
02	8/20/14	N/A		UPDATED RECTIFIER WIRING	VK	KK								
03	8/20/14	N/A		RECTIFIER WAS 33061 NOW 33070	KK	KK								
							X.X ± 0.5 MM		TACONY CORPORATION CLAIMS PROPRIETARY RIGHTS IN THE MATERIAL DISCLOSED HEREIN. THIS DRAWING IS ISSUED FOR ENGINEERING INFORMATION ONLY. IT MAY NOT BE REPRODUCED, NOR MAY THE INFORMATION HEREIN BE USED FOR MANUFACTURING PURPOSES WITHOUT WRITTEN PERMISSION FROM TACONY CORP.		3101 Wichita Court Fort Worth, TX 76140-1755		DESCRIPTION: WAV 230V	
							X.XX ± 0.2 MM				C		PN: 93031TV	
							X.XXX ± 0.1 MM							
							ANGLES ± 0.5							
							BREAK SHARP EDGES TO 0.2 MM							