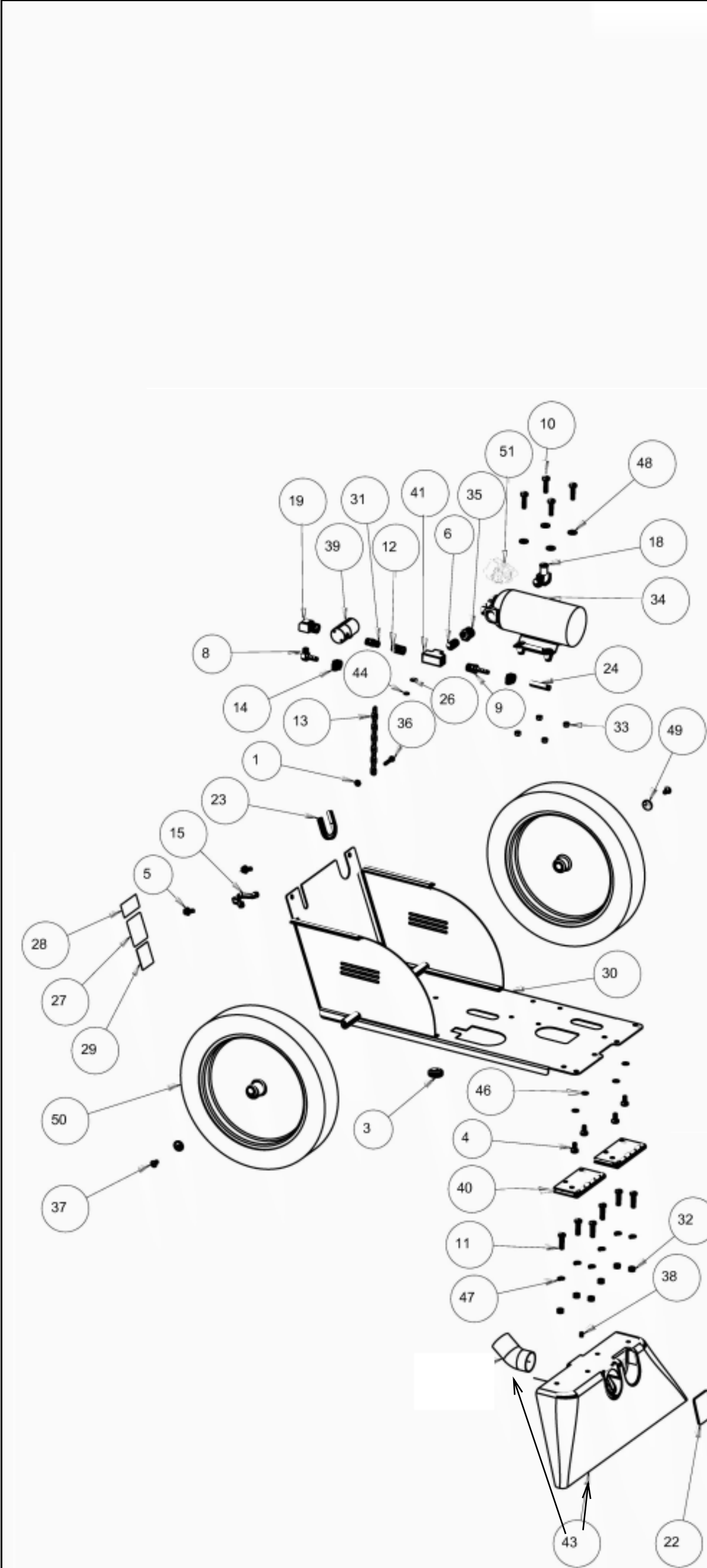


Ref. No.	Part No.	Part Description	Qty
		HM35 Sheet 1	
1	X8209S	1/4-20 X 1/2" SERRATED HEX	8
2	X8288	1/4-20 X 4-1/2" BOLT	3
3A	04-3055-0053	POWER CORD UK 15M 3CORE ORANGE 16A C19 CONNECTOR	1
3B	04-3055-0153	POWER CORD EURO 15M 3CORE ORANGE 16A C19 CONNECTOR	1
3C	04-3055-0353	POWER CORD AUS 15M 3CORE ORANGE 16A C19 CONNECTOR	1
4	7AT004	BARB 1/2 HOSE 1/4 MALE	1
5	X9086	BRACK TANK MOUNT 90 DEGREES	2
6	X9085	BRACKET TANK MOUNT	2
7	X9134	BRUSH WARNING LABEL	1
8	X9075	BUSHING 1-1/2" X 1-1/4" PVC	1
9	X8150	CABLE TIE 11" BLACK	2
10	X9068	CHAIN FOR LID	1
11	X1192	CIRCUIT BREAKER 2.5 AMP	1
12	7DL005	CLAMP 1-1/2 WORM GEAR StSt HEX	1
13	7DL008	CLAMP 1/2 WORM GEAR STAINLESS HEX	2
14	72173A	CLIP SPRING	1
15	BA00163582	CORD STRAIN RELIEF BLACK	1
16	PX63	COUPLER PLASTIC 1-1/2" SLIP	1
17	X9043TEAL	COVER TEAL SCE	1
18	X9034-C	DOME LID AND GASKET	1
19	PAS37	DRAIN HOSE	1
20	X9281	EMI FILTER	1
21	K1123	EXPANDER CUFF 1-1/4" TO 1-1/2" GRAY	1
22	PX11A	FITTING PLASTIC ELBOW 90	1
23	PX48	FITTING, BRASS, BULKHEAD 3/4"	1
24	X9053L	FLOAT CAGE WITH LIGHT BALL	1
25	X9080	FLOAT COVER	1
26	X9084	GASKET COVER SCE	1
27	PX48G	GASKET FIBER 1.125 OD X .75 ID	1
28	X9071	GASKET SMALL DOME	1
29	70079C	HOSE 1/2" WIRE REINFORCED 21" LONG	1
30	X9041 REPRO	HOUSING RECOVERY	1
31	X9042TEAL	HOUSING SOLUTION	1
32	X8400TV	HYDROMIST 35 LABEL	1
33	X9110	KNOB LARGE DOME LID	1
34	X9093TV	LABEL 3 HOLE SWITCH PANEL	1
35	X9214	LABEL, GROUND SYMBOL	1
36	X9125-1	LABEL, TANK CAPACITY	1
37	X9120-2	LARGE DOME SPACER GASKET	1
38	X9081	LID SOLUTION TANK	1
39	X9120-1	MOTOR GASKET	1
40	7DN004	NUT CAP 10-32	2
41	PX46	NUT LOCK 1-1/2"	1
42	X8008N	NUT, LOCK, 1/2" STEEL CONDUIT	1
43	X9057	OPEATING INSTRUCTION LABEL	1
44	X8008P	PLASTIC STRAIN RELIEF **	1
45	PAS36	PLUG DRAIN HOSE	1
46	71495A	PUMP PROTECTION FILTER	1
47	X9506	ROCKER SWITCH	3
48	X9200	ROCKER SWITCH WITH PADDLE	1
49	X8270	SCREW 10-24 X 1/2" PHIL	1
50	71651A	SCREW 10-32 X 1/2 PHIL 18-8 StSt	1
51	7BR005	SCREW 10-32 X 3/4" PHIL StSt	2
52	X9135	SCREW 10-32 X 7/8" SOC	2
53	X9098	SCREW #10 X 1" BLACK ZINC	2
54	X8261SS	SCREW #6 X 1/2 PHIL StSt	9
55	X8222	SCREW 1/4-20 X 3/16 SOC	2
56	X9206TV	SIDE LABEL	2
57	X9033	SMALL DOME	1
58	X9092	VAC HOSE 1.5" x 21"	1
59	PX25	VAC INLET STRAIGHT	2
60	72611B	VACUUM 3-STAGE 230V	1
61	X9129	VACUUM STACK ASSEMBLY	1
62	PX14A	VALVE GASKET	1
63	7CM003	WASHER #10 FLAT S/S	4
64	72274A	WASHER 3/4" NEOPRENE-BOND	1
65	X8858	WASHER ID.299 OD.622 THK.055	9
66	X9842	WIRING HARNESS INCLUDES PART WITH **	1
67	X9124	RECOVERY DOME GASKET	1

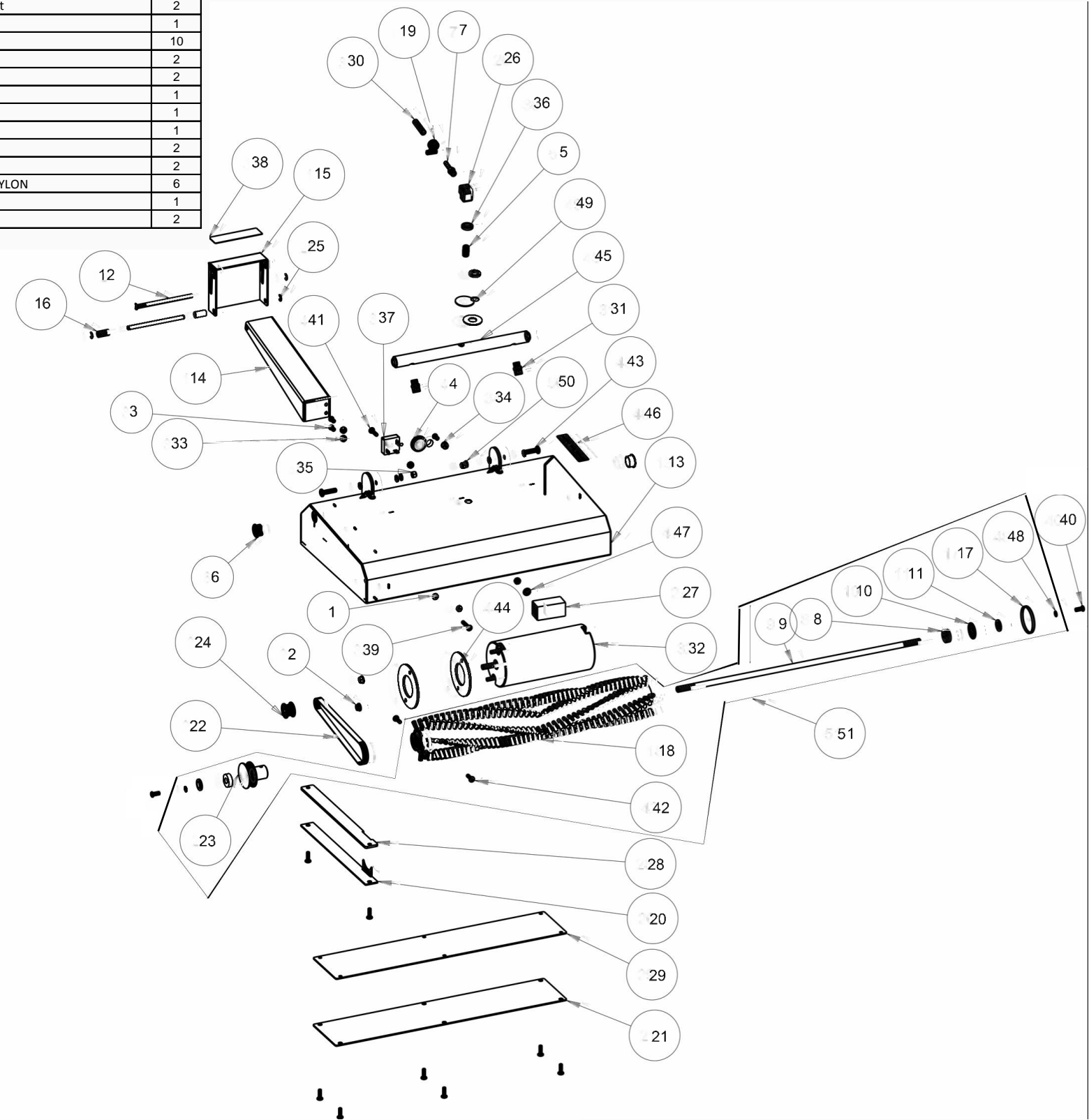
Tacony CFC		Hydromist 35	
Part Number:		HM35	
Date:		24-Apr-19	Sheet no. 1 / 3
Drawing Number:		09-1108-0000 (Series A)	
Drawing Issue:		C	
Modified By:		J WYLES	DESCRIPTION OF CHANGE
Reference Parts List Issue:		13	Format Change
			ECN #
			-



Ref. No.	Part No.	Part Description	Qty
		HM35 Sheet 2	
1	X8241	NUT HEX HEAD 10-24 StSt	1
2	7BH004	SCREW Philips Pan Head 10-32 x 3/8" StSt	2
3	X9100	GROMMET 1/2"	1
4	X8209	SCREW HEX HEAD CAP 1/4-20 X 1/2" ZINC	4
5	X8209S	1/4-20 X 1/2 INCH SERRATED HEX SELF LOCKING FLANGE SCREW ZP 2	
6	PX32	1/4" CLOSE NIPPLE BRASS	1
8	7AT006	BARBED ELBOW CONNECTOR 1/4 - 1/8	1
9	7AT003	HOSE BARB 1/4" HOSE X 1/4 MALE	2
10	X9211	BOLT 1/4-20 x 1"	4
11	X8282	BOLT HEX HEAD 1/4-20 X 1 StSt	6
12	7AG002	BUSHING 1/4-1/8 NPT	1
13	X9144	CHAIN 28" ZINC PLATED	1
14	7DL003	CLAMP 1/4" WORM GEAR StSt	3
15	X9111	Cord Clamp	1
16	PX6	FEMALE DISCONNECT	1
18	71507A	ELBOW 1/2H - 3/8 MPT	1
19	SW139	ELBOW STREET 1/8"	1
21	X9096	FLIP DOOR WITH HINGE ASSEMBLY	1
22	X9097	FLIP DOOR GASKET	1
23	X9109	GROMMET 5/8" LONG EXTRUDED	1
24	71817A	BRAIDED HOSE 1/4" (16" LONG)	1
26	X9214	LABEL Grounding Symbol	1
27	X8459	LABEL SERIAL NUMBER PLAIN	1
28	X8976	LABEL WARNING	1
29	X1003	MADE IN THE USA LABEL	1
30	X9012	MAIN CHASSIS ASSEMBLY	1
31	7CX001	NIPPLE HEX 1/8"	1
32	7CN001	NUT 1/4-20 HEX	6
33	X8237	NUT, 1/4-20, LOCK NYLON INSERT ZINC PLATED	4
34	SF814-2	100 PSI SHURFLO PUMP 220V	1
35	PC20	REDUCER 3/8" TO 1/4"	1
36	7CU001	SCREW PHILLIPS PAN HEAD 10-24 X 1 StSt	1
37	X8210	SCREW 1/4-20 X 1/2" PHILLIPS FLAT HEAD ZP	2
38	X8222	SCREW SOCKET SET FLAT POINT LOC-TITE 1/4-20 X 3/16	1
39	SW132-6	SOLENOID 240v 50hz 100PSI	1
40	X9014	TANK HINGE	2
41	7AV001	TEE UNION 1/4 NPT	1
43	X9009A	VACUUM SHOE ALUMINIUM AND TUBE PFXS900S	1
44	7CY001	WASHER INTERNAL LOCK StSt	1
45	X8239	WASHER 1.5" O/D X .400" I/D ZP	1
46	7CY002	WASHER 1/4" INTERNAL LOCK StSt	4
47	7CL002	WASHER 1/4" SPLIT LOCK	6
48	X8858	WASHER ID.299 OD.622 THK.055	4
49	X8020	WASHER COUNTERSUNK	2
50	X9066	12" WHEEL	2
51	X1535	SF814-2 PUMP HEAD	1
Not Shown	PT400H	PRIMING HOSE (HM35 HM55/100 HM55/400)	1

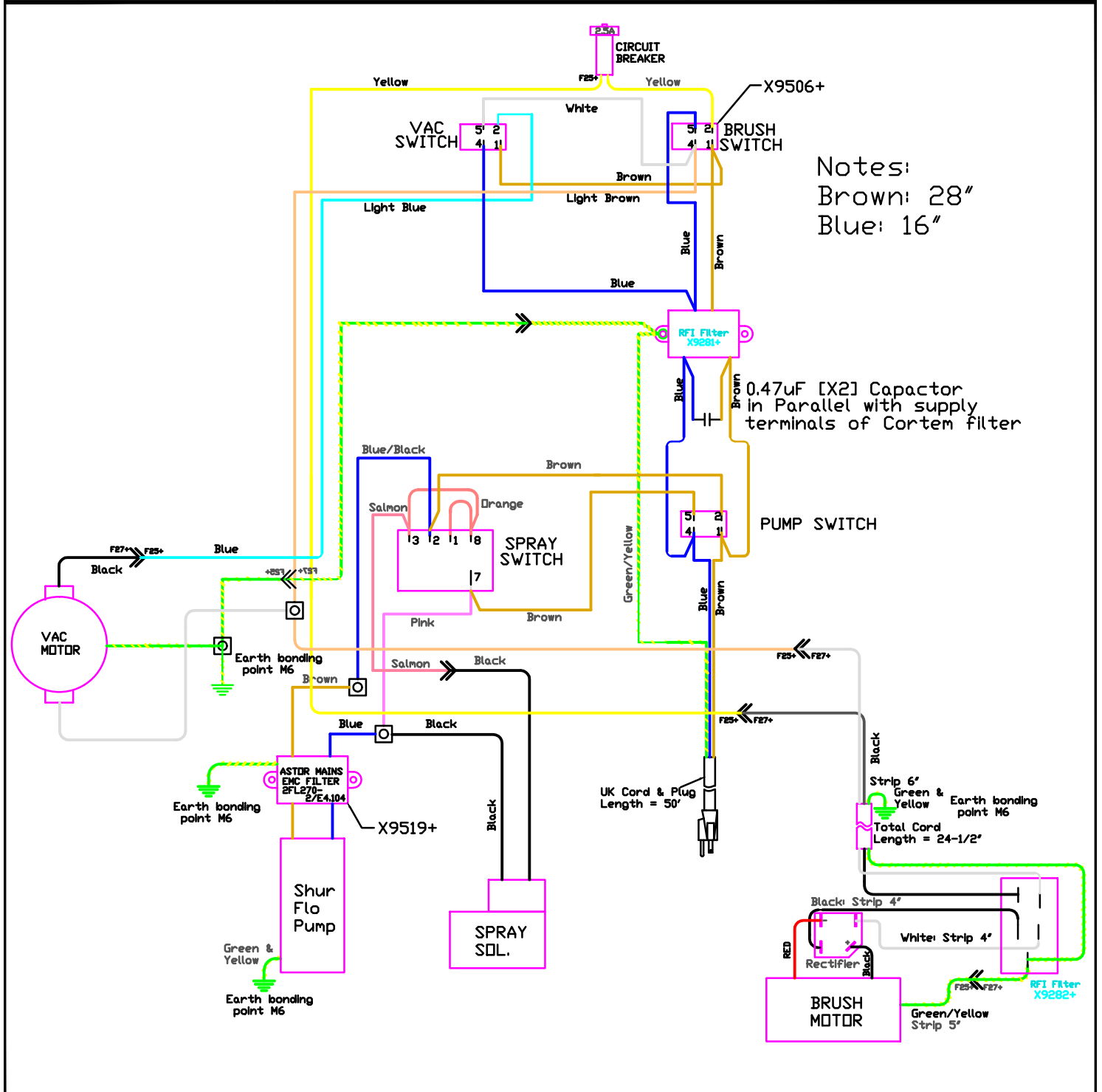
Tacony CFC		Hydromist 35	
Part Number:		HM35	
Date:	24-Apr-19	Sheet no. 2 / 3	ECN #
Drawing Number:	09-1108-0000 (Series A)		
Drawing Issue:	C		
Modified By:	J WYLES	DESCRIPTION OF CHANGE	ECN #
Reference Parts List Issue:	13	Format Change	-

Ref. No.	Part No.	Part Description	Qty
		HM35 Sheet 3	
1	X8241	NUT HEX HEAD 10-24	2
2	X9169	FLANGE NUT HEX HEAD 10-32 StSt	2
3	7BH004	10-32 x3/8 PHIL PAN StSt	3
4	X9100	GROMMET 1/2"	1
5	PC45	1/8" CLOSE NIPPLE	1
6	X9174	LOCKING PLUG 3/4" UNVENTED	2
7	PC66	FITTING 1/8" NPTM x 1/4 HOSE BARB	1
8	X9001	BRUSH BEARING	2
9	X9017	BRUSH AXLE	1
10	X9019	BRUSH BEARING SHIELD	1
11	X9018	BRUSH BEARING SPACER NYLON	2
12	X9030	BRUSH FOOT PEDAL	2
13	X9015	BRUSH HOUSING	1
14	X9107	BRUSH LIFTING BRACKET	1
15	X9026	BRUSH LIFT PEDAL	1
16	X9027	BRUSH LIFT PEDAL SPACER	2
17	X9020	BRUSH THREAD GUARD	1
18	X9070	BRUSHROLL	1
19	9DL003	CLAMP 1/4 WORM GEAR StSt	1
20	X9015B	COVERPLATE BRUSH MOTOR BELT	1
21	X9015A	BRUSH MOTOR COVERPLATE	1
22	X9004	BRUSH DRIVE BELT	1
23	X9117	DRIVE PULLEY 24 TEETH	1
24	X9116	DRIVE PULLEY 12 TOOTH (WITH 2 OFF 8-32 SET SCREWS)	1
25	X9114	E RING 1/4"	4
26	7AK003	ELBOW UNION 1/8" NPT	1
27	X9282	EMI FILTER BRUSH MOTOR	1
28	X9150	GASKET BELT COVER	1
29	X9126	GASKET BRUSH MOTOR COVER	1
30	71817A	BRAIDED HOSE 1/4" (16" LONG)	1
31	X9139B	HM35 MINATURE NOZZLE	2
32	X9119	MOTOR 220VDC 1/4HP 3"	1
33	7BF008	NUT 10-32 KEPS StSt	4
34	X8830	NYLON LOCK NUT 10-32 StSt	1
35	X8237	NUT, 1/4-20, LOCK NYLON INSERT ZINC PLATED	2
36	X8293	WASHER NYLON .50"/I/D X .75"OD X .130"THK BLACK	2
37	X1193	RECTIFIER 1000V 35 AMP	1
38	X9122	SAFETY WALK TAPE 1" WIDE	1
39	7CU001	SCREW PHILLIPS PAN HEAD 10-24 X 1 StSt	1
40	71651A	SCREW 10-32 X 1/2 PHIL PAN MS StSt	2
41	9BR005	SCREW 10-32 X3/4" PHIL StSt	1
42	X9118	SCREW FLAT HEAD 10-32 X 5/8 StSt	10
43	9CU003	SCREW 1/4-20 X 1" PHIL StSt	2
44	X9099	MOTOR SPACER	2
45	X9021	SPRAY MANIFOLD	1
46	X9128	SUPERIOR EDGE LABEL	1
47	9CM003	WASHER #10 FLAT StSt	1
48	7CM004	Washer, 3/8 USS FLAT HD StSt	2
49	9CM007	WASHER 1/2 USS FLAT 18-8 StSt	2
50	92241A	WASHER 1/4" ID FLAT .059" THICK NYLON	6
51	X9438	BRUSH ASSEMBLY HM35	1
52	X1745	NOZZLE BODY	2



Taconomy CFC		Hydromist 35	
Part Number:		HM35	
Date:		24-Apr-19	Sheet no. 3 / 3
Drawing Number:		09-1108-0000 (Series A)	
Drawing Issue:		C	
Modified By:		J WYLES	DESCRIPTION OF CHANGE
Reference Parts List Issue:		13	Format Change
			ECN #
			-

SCHEMATIC USED FOR THE FOLLOWING MACHINES:	HM35	-	-	-
	-	-	-	-
	-	-	-	-
	-	-	-	-



REV	DATE	ECN	DESCRIPTION	BY	<div> <div>Powr-Flite</div> <div>COMMERCIAL FLOOR CARE EQUIPMENT</div> </div> <div> <div>3101 Wichita Court</div> <div>Fort Worth, TX 76140-1755</div> </div>			
01	7/10/09	-	Changed Wire Color	AR				
-	-	-	-	-	MATERIAL	-	FINISH	-
-	-	-	-	-	DWN	AR	DATE	8/3/08
<div> <div> <div>X.X ±0.02 IN</div> <div>RADII X.X ±0.02</div> </div> <div> <div>X.XX ±0.01 IN</div> <div>X.XX ±0.01</div> </div> <div> <div>X.XXX ±0.005 IN</div> <div>COMMON CONCENTRIC TO 0.002"</div> </div> <div> <div>X.XXXX ±0.0005 IN</div> <div>± 0°30'</div> </div> </div> <div>BREAK SHARP EDGES TO .010 MAX.</div>					<div>DESCRIPTION</div> <div>WIRING DIAGRAM - 230V</div> <div>A PART NUMBER</div> <div>WPF042</div>			
					REV 01			