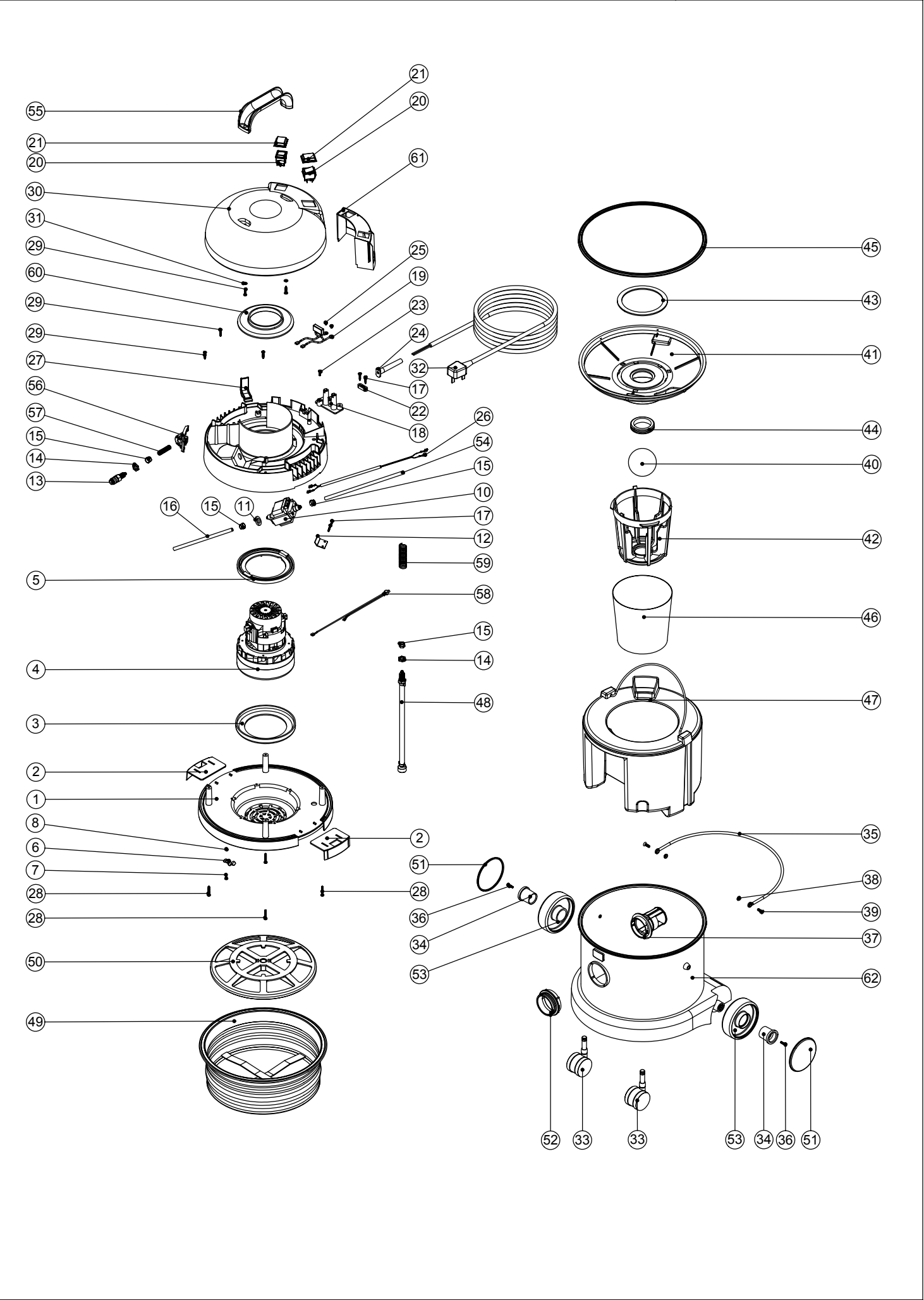


Numatic International Spare Parts

Model No: CT370-2 EXPLODED DRAWING

234357
DRAWING: EXP-0788 ISS:A01
25/05/2005



Numatic International Spare Parts

Model No: CT370-2 EXPLODED DRAWING

POS:	ITEM NO:	DESCRIPTION:	COMMENTS:
1	227922	BOTTOM MOTOR HOUSING	
2	227115	TOGGLE	
3	202031	BOTTOM MOTOR GASKET	
4	205411	240V 2 STAGE D.I BYPASS ACUSTEK MOTOR (BL21104)(MARKED 230V)	
	205410	220V 2 STAGE D.I BYPASS ACUSTEK MOTOR (BL21102)(MARKED 230V)	
	205409	120V 2 STAGE D.I BYPASS ACUSTEK MOTOR (BL21101)	
5	227925	TOP MOTOR GASKET	
6	227230	WIRE CLIP	
7	221151	M4 X 12MM LONG POZI PAN SCREW	
8	219083	M4 NYLON INSERT NUT	
9	325506	PROCESSED TOP MOTOR HOUSING PRINTED GREY NUMATIC (LAMB MOTOR)	
10	216147	PUMP SMALL BORE 220/240V/50HZ	
11	206208	SEALING WASHER	
12	303022	PUMP FIXING BRACKET	
13	216296	QUICK RELEASE BULK HEAD FITTING	
14	219337	LOCKNUT	
15	219299	BLOCKING NUT	
16	227996	175MM LONG SOLUTION TUBE	
17	219107	No6 X 5/8 INCH LONG POZI PAN PLASTITE SCREW	
18	220564	TERMINAL BLOCK MOULDING (2 INSERTS)	
19	220698	SUPPRESSOR ASSEMBLY	
20	220843	BLUE ROCKER SWITCH	
21	206573	SWITCH COVER (PLUG HANDLE)	
22	227008	BLACK CABLE CLAMP	
23	219101	No8 X 1/2 INCH LONG POZI PAN PLASTITE SCREW	
24	220923	STRESS RELIEF	
25	219090	M4 X 8MM LONG POZI PAN SEMS SCREW	
26	321666	DIODE ASSEMBLY	
27	227019	CABLE HOOK	
28	219369	No8 X 1 INCH LONG POZI PAN STAINLESS STEEL PLASTITE SCREW	
29	219041	No8 X 3/4 INCH LONG POZI PAN SCREW	
30	227920	SWITCH COVER TOP	
31	219003	M5 FORM A STEEL WASHER	
32	236033	10.0M X 1.00MM X 2 CORE CABLE (UK PLUG)	
	236034	10.0M X 1.00MM X 2 CORE CABLE (EURO PLUG)	
	236047	10.0M X 1.00MM X 2 CORE CABLE (SWISS PLUG)	
	236036	10.0M X 1.00MM X 2 CORE CABLE (SOUTH AFRICAN PLUG)	
	236044	10.0M X 1.00MM X 2 CORE CABLE (AUSTRALIAN PLUG)	
	236049	10.0M X 1.50MM X 2 CORE CABLE (INDUSTRIAL PLUG)	
33	204067	50MM BLACK TWIN CASTOR	
34	227011	BLACK WHEEL HUB CAP	
35	403039	BUCKET HANDLE	
36	219105	No8 X 5/8 INCH LONG POZI PAN PLASTITE SCREW	
37	206493	WET DRY CONNECTOR	
38	208026	BUCKET HANDLE SPACER	
39	219282	M5 X 16MM LONG POZI PAN COUNTERSUNK SCREW	
40	206026	POLYPROP BALL	
41	225087	FLOAT CAGE SUPPORT	
42	225086	FLOAT CAGE	
43	225083	FLOAT ASSEMBLY GASKET	
44	220235	FLOAT GROMMET	
45	207011	FLOAT CAGE GASKET	
46	207055	GAUZE FILTER	
47	227065	FLUID CONTAINER ASSEMBLY	
48	303618	BRAIDED SOLUTION TUBE & FILTER ASSEMBLY	
49	207102	WHITE FILTER ASSEMBLY	
50	209050	SINGLE FILTER GRID	
51	227638	BLACK PLAIN TRIM	
52	227395	BLACK THREADED NECK	
	227397	BLUE THREADED NECK	
	227346	GREY THREADED NECK	
53	227640	2 SHOT WHEEL ASSEMBLY	
54	227995	235MM LONG SOLUTION TUBE	
55	206451	HANDLE	
56	270167	QUICK RELEASE MOUNTING BRACKET	
57	219281	TUBE SPRING	
58	230078	240/220V THERMAL OVERLOAD	
59	219327	80MM LG COMPRESSION SPRING	
60	227926	AIR SEPERATOR	
61	227927	SWITCH MOUNTING BRACKET	
62	325426	BLUE DRUM ASSEMBLY	
	325417	BLUE DRUM ASSEMBLY + FACE	
	325430	WHITE DRUM ASSEMBLY	
	325435	WHITE DRUM ASSEMBLY + FACE	
	325429	GREY DRUM ASSEMBLY	
	325434	GREY DRUM ASSEMBLY + FACE	
	250028	FUN FACE	