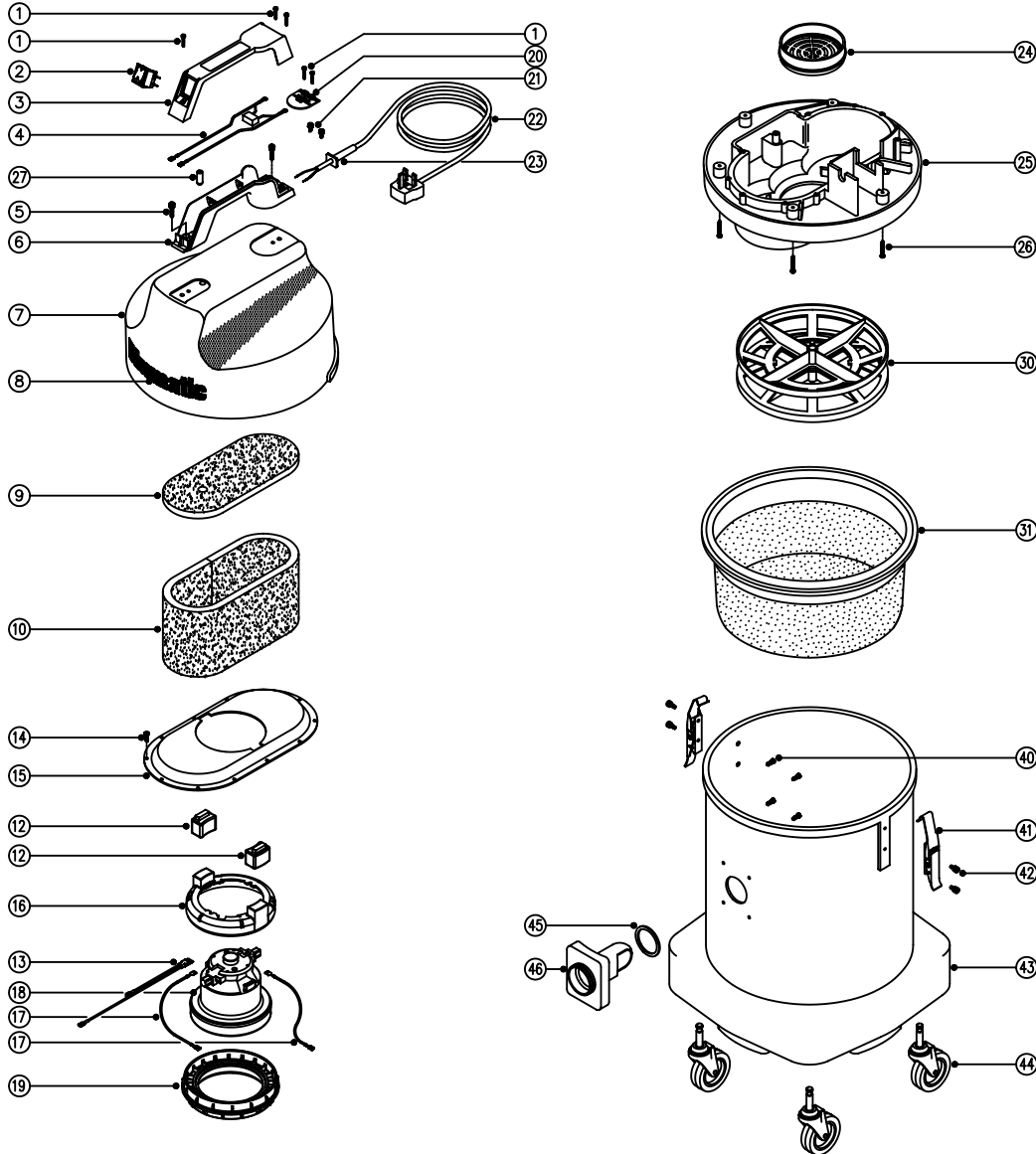




Spare Parts

Model No. NVQ570 (2 WIRE)

Numatic, International, Chard, Somerset, TA20 2GB. 231684
Tel: 01460 68480 Fax: 01460 68560 DRAWING: EXP300 ISS: A04
Sales - Tel: 01460 68600 Fax: 01460 68458 02/11/99



MODEL No. NVQ570 (2 WIRE)

SPARE PARTS

POS.	PART No	DESCRIPTION
1	219107	No6 x 5/8" Plastite Screw
2	220552	Red Rocker Switch
3	206213	Handle Cover
4	220142	Suppressor
5	219546	M5 x 20mm Long Pozzi Pan Sems Screw
6	320291	Handle Body Moulding
7	227045	Cover Moulding (No Numatic Logo)
8	210083	White Numatic Logo
9	203014	Top Felt
10	203015	Side Felt
11		
12	202087	Top Mounting Rubber
13	220782	230V Overload Assembly
	220783	120V Overload Assembly
14	219105	No8 x 5/8" Long Plastite Screw
15	325129	Top Motor Housing
16	206420	ES Motor Spacer
17	320286	White Motor Link Wire
18	205070	230V Motor
	205075	120V Motor
19	202088	Bottom Motor Gasket
20	220131	Cable Clamp
21	219090	M4 x 8mm Long Sems Screw

POS.	PART No	DESCRIPTION
22	220249	Mains Cable (U.K. Plug)
	220251	Mains Cable (C.E.E. Plug)
	220502	Mains Cable (U.S.A. Plug)
	220467	Mains Cable (15A Plug South Africa)
	220057	Mains Cable (No Plug)
23	220132	Stress Relief
24	227173	Fan Guard
25	301175	Bottom Motor Housing
26	219104	No8 x 1" Plastite Screw
27	229240	End Tip
30	209100	Double Filter Grid
31	207030	White Filter
40	219105	No8 x 5/8" Long Plastite Screw
41	206022	Small Claw Toggle
42	219047	M5 x 10mm Long Sems Screw
43	325008	Container - Red
	325009	Container - Blue
	325039	Container - Green
	325040	Container - Yellow
44	204060	75mm Castor
45	202027	Flange Gasket
46	206024	Hose Connection Flange