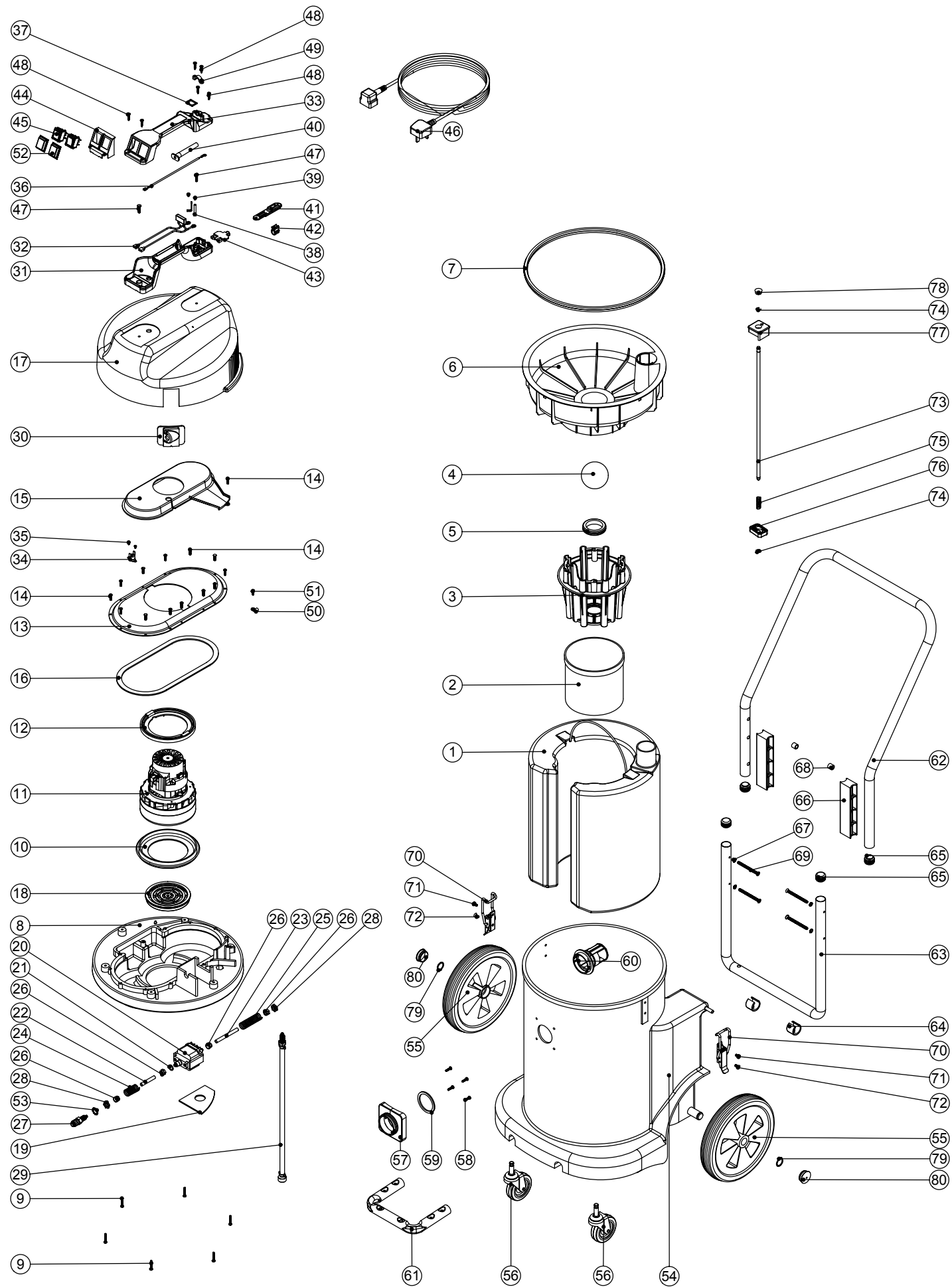


Numatic International Spare Parts

Model No: CT900-2 EXPLODED DRAWING

234262
DRAWING: EXP-0793 ISS:A01
13/06/2005



Numatic International Spare Parts

Model No: CT900-2 EXPLODED DRAWING

POS:	ITEM NO:	DESCRIPTION:	COMMENTS:
1	325160	FLUID CONTAINER & HANDLE ASSEMBLY	
2	207073	GAUZE FILTER	
3	225130	MOULDED FLOAT CAGE	
4	206026	POLYPROP BALL	
5	220235	FLOAT GROMMET	
6	225102	FLOAT MOULDING	
7	202036	FLOAT MOULD EXTRUSION SEAL	
8	301045	PROCESSED BOTTOM MOTOR HOUSING	
9	219369	No8 X 1 INCH LONG POZI PAN STAINLESS STEEL PLASTITE SCREW	
10	202005	MOTOR BOTTOM GASKET	
11	205411	240V 2 STAGE D.I BYPASS ACUSTEK MOTOR (BL21104)(MARKED 230V)	
	205410	220V 2 STAGE D.I BYPASS ACUSTEK MOTOR (BL21102)(MARKED 230V)	
	205409	120V 2 STAGE D.I BYPASS ACUSTEK MOTOR (BL21101)	
12	227925	TOP MOTOR GASKET	
13	325129	TOP MOTOR HOUSING	
14	219370	No8 X 5/8 INCH LONG PLASTITE STAINLESS STEEL SCREW	
15	227929	AIR SEPERATOR (SIMPLEX)	
16	202012	GASKET	
17	301049	PROCESSED COVER MOULDING	
18	206010	FAN GUARD	
19	202042	FLOAT SEALING GASKET	
20	216147	PUMP SMALL BORE 220/240V/50HZ	
21	219304	O RING	
22	227055	48MM LONG BLACK POLYURATHENE TUBE	
23	227056	78MM LONG BLACK POLYURATHENE TUBE	
24	219326	50MM LONG COMPRESSION SPRING	
25	219327	80MM LG COMPRESSION SPRING	
26	219299	BLOCKING NUT	
27	216296	QUICK RELEASE BULK HEAD FITTING	
28	219337	LOCKNUT	
29	303167	SOLUTION TUBE & FILTER ASSEMBLY	
30	206112	QUICK RELEASE FIX PLATE	
31	320686	HANDLE BASE MOULDING	
32	220142	SUPPRESSOR ASSEMBLY	230V VERSION
	220234	SUPPRESSOR ASSEMBLY	220V VERSION
33	227624	HANDLE COVER	
	227627	HANDLE COVER WIRE 2 SWITCH	HARDWIRED VERSION
34	220532	THERMOSTAT	
35	219491	M5 X 3MM LONG POZI PAN TAPTITE SCREW	
36	320830	DIODE ASSEMBLY	
37	202000	TERMINAL GASKET	
38	206562	CONTACT PIN	
39	219090	M4 X 8MM LONG POZI PAN SEMS SCREW	
40	220923	STRESS RELIEF	
41	227636	STRAIN RELIEF	
42	227637	CABLE CLIP	
43	227632	TERMINAL COVER & CLAMP	
44	227629	SWITCH MOUNTING BRACKET	
45	220843	BLUE ROCKER SWITCH	
46	236009	10.0M X 1.00MM X 2 CORE NUCABLE (UK PLUG)	
	236013	10.0M X 1.00MM X 2 CORE NUCABLE (EURO PLUG)	
	236017	10.0M X 1.00MM X 2 CORE NUCABLE (SWISS PLUG)	
	236021	10.0M X 1.00MM X 2 CORE NUCABLE (SOUTH AFRICAN PLUG)	
	236029	10.0M X 1.00MM X 2 CORE NUCABLE (AUSTRALIAN PLUG)	
	236065	10.0M X 2.5MM X 2 CORE NUCABLE PLUS 32AMP INDUSTRIAL PLUG	HARDWIRED VERSION
47	219546	M5 X 20MM LONG POZI PAN SEMS SCREW	
48	219107	No6 X 5/8 INCH LONG POZI PAN PLASTITE SCREW	
49	227564	PLUG LOCATION CLAMP	
50	226050	CABLE CLAMP (WHITE P CLIP)	
51	219471	M4 X 12MM LONG POZI PAN SEMS SCREW	
52	206573	SWITCH COVER (PLUG HANDLE)	
53	219290	M12 SHAKEPROOF WASHER	
54	325458	PROCESSED BLUE DRUM	
	325457	PROCESSED RED DRUM	
	325459	PROCESSED GREEN DRUM	
	325460	PROCESSED YELLOW DRUM	
55	204028	10 INCH WHEEL	
56	204060	3 INCH CASTOR	
57	270161	FLANGE NECK BAYONET	
58	219105	No8 X 5/8 INCH LONG POZI PAN PLASTITE SCREW	
59	202027	HOSE FLANGE GASKET	
60	206493	WET DRY CONNECTOR	
61	303127	TOOL MOUNTING BAR	
62	418671	BLACK UPPER HANDLE	
63	303128	LOWER HANDLE	
64	206295	PLASTIC SADDLE FOOT	
65	20637V	25.4MM TUBE END STOP	
66	206128	HANDLE BLOCK SPACER	
67	219423	M6 COUNTERSUNK LOCK WASHER	
68	21985V	SPACER	
69	219422	M6 X 70MM LONG POZI PAN COUNTERSUNK SCREW	
70	206135	TOGGLE FASTENER	
71	219047	M5 X 10MM LONG POZI PAN SEMS SCREW	
72	219330	M5 X 12MM LONG POZI PAN COUNTRSUNK SCREW	
73	206133	LOCKING BAR	
74	219307	E CLIP	
75	219312	COMPRESSION SPRING	
76	206127	LOCKING BAR SUPPORT	
77	206126	LOCKING BAR KNOB	
78	206132	BLACK PLASTIC CAP	
79	219308	CIRCLIP	
80	206131	BLACK PLASTIC CAP	