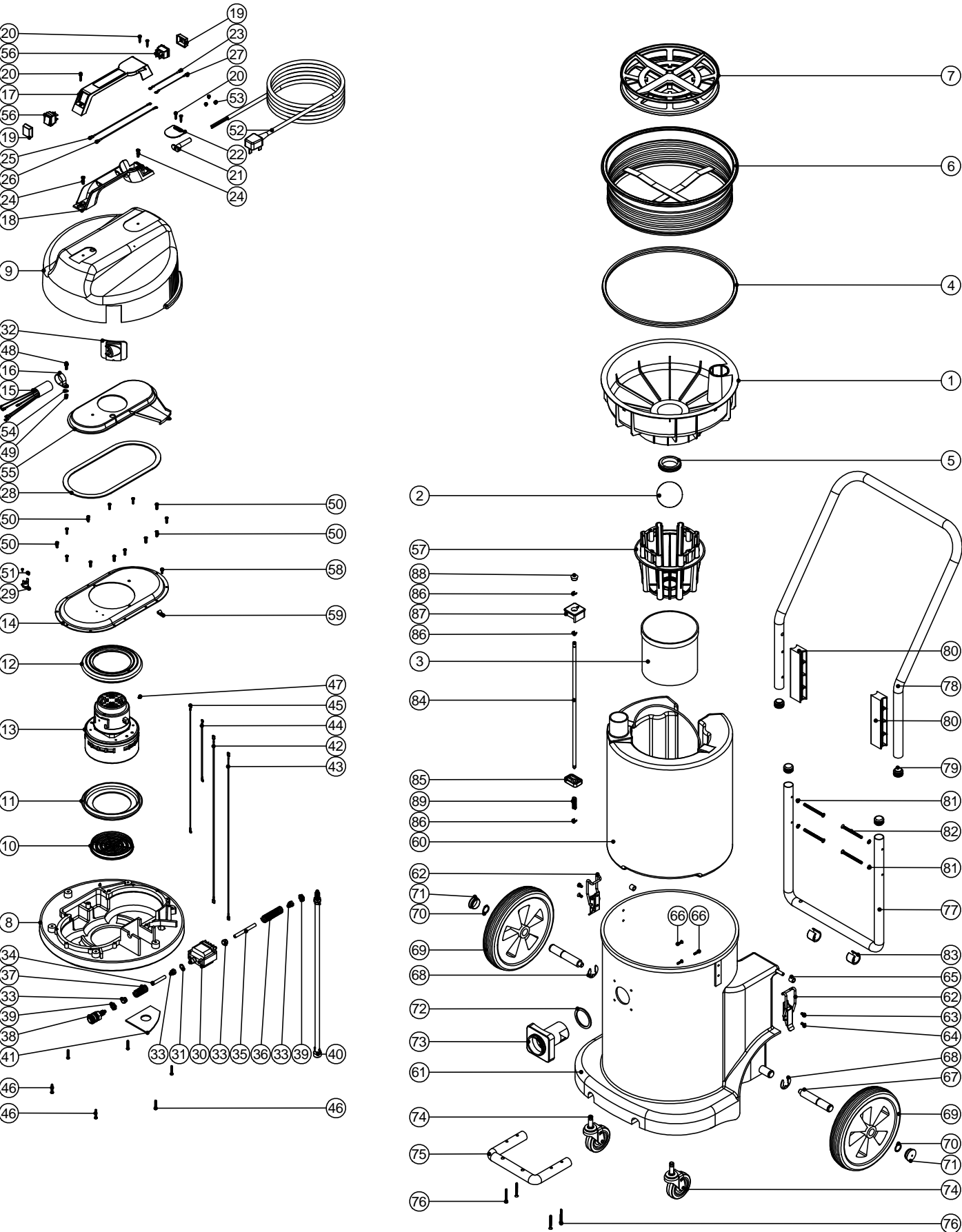


Numatic International Spare Parts
Model No: CT900

231400
DRAWING: EXP125 ISS:A02
25/10/2001



Numatic International Spare Parts
Model No: CT900

POS:	ITEM NO:	DESCRIPTION:	COMMENTS:
1	225102	FLOAT MOULDING	
2	206026	POLYPROP BALL	
3	207073	GAUZE FILTER	
4	202036	FLOAT MOULD EXTRUSION SEAL	
5	220235	FLOAT GROMMET	
6	207030	WHITE FILTER + MOULDING GASKET	
7	209101	FILTER GRID DOUBLE	
8	301045	PROCESSED BOTTOM MOTOR HOUSING	
9	301049	PROCESSED COVER MOULDING	
	301173	PROCESSED COVER MOULDING	120V CSA SPEC MACHINES
10	206010	FAN GUARD	
11	202005	MOTOR BOTTOM GASKET	
12	202003	TOP MOTOR GASKET	
13	205060	230V BP MOTOR	
	205062	110/120V BP MOTOR	
	205063	100V BP MOTOR	
14	225062	TOP MOTOR HOUSING	
15	320198	SUPPRESSOR MODIFICATION	230V MAHINES
16	220288	30MM DIAMETER P-CLIP	230V MAHINES
17	206211	HANDLE COVER	
	206221	HANDLE COVER	120V CSA SPEC MACHINES
18	320007	HANDLE MOULDING	
	320272	HANDLE MOULDING	120V CSA SPEC MACHINES
19	220238	SWITCH BOOT	
20	219107	No6 X 5/8 INCH LONG POZI PAN PLASTITE SCREW	
21	220132	STRESS RELIEF SLEEVE	
22	220131	CABLE CLAMP	
23	320010	DIODE ASSY.	
24	219546	M5 X 20MM LONG POZI PAN SEMS SCREW	
25	320183	200MM LONG BLUE LINK WIRE	
26	320003	200MM LONG BROWN LINK WIRE	
27	320551	100MM LONG BLUE LINK WIRE	
28	202012	GASKET	
29	220532	THERMOSTAT	
	220659	THERMOSTAT	120V CSA SPEC MACHINES
30	216147	50Hz SMALL BORE PUMP 220/240V	
	216142	50Hz SMALL BORE PUMP 110V	
	216143	60Hz SMALL BORE PUMP 220V	
	216144	60Hz SMALL BORE PUMP 100V	
	216145	50Hz SMALL BORE PUMP 100V	
	216146	60Hz SMALL BORE PUMP 110V	
	216148	50Hz SMALL BORE PUMP 210V	
31	219304	O RING	
32	206112	QUICK RELEASE FIX PLATE	
33	219299	BLOCKING NUT	
34	227055	48MM LONG BLACK POLYURATHENE TUBE	
35	227056	SOLUTION TUBE (78mm LONG)	
36	219327	80MM LG COMPRESSION SPRING	
37	219326	50MM LONG COMPRESSION SPRING	
38	216149	QUICK RELEASE COUPLING WITH BULKHEAD CONNECTION	
39	219337	LOCKNUT	
40	303135	500MM LONG SOLUTION TUBE & FILTER ASSEMBLY	
41	202042	FLOAT SEALING GASKET	
42	320058	BLUE LINK WIRE	
43	320059	BROWN LINK WIRE	
44	320092	180MM LONG GREEN/YELLOW LINK WIRE	
45	320093	400MM LONG GREEN/YELLOW LINK WIRE	
46	219369	No8 X 1 INCH LONG POZI PAN STAINLESS STEEL PLASTITE SCREW	
47	219566	M4 X 6MM LONG POZI PAN SCREW	
48	219045	M5 X 16MM LONG POZI PAN SEMS SCREW	
49	219076	M5 NYLON INSERT NUT	
50	219370	No8 X 5/8 INCH LONG PLASTITE STAINLESS STEEL SCREW	
51	219491	M5 X 3MM LONG POZI PAN TAPTITE SCREW	
52	220232	MAINS CABLE (3 WIRE / UK PLUG)	
	220059	MAINS CABLE (3 WIRE / NO PLUG)	230V MACHINES
	220253	MAINS CABLE (3 WIRE / CEE PLUG)	
	220094	MAINS CABLE (3 WIRE / NO PLUG)	110/120V MACHINES
	220222	MAINS CABLE (3 WIRE / SWISS PLUG)	
	220839	MAINS CABLE (3 WIRE / CSA PLUG)	
	299039	MAINS CABLE (3 WIRE / AUSTRALIAN PLUG)	
	220468	MAINS CABLE (3 WIRE / 15 AMP SOUTH AFRICAN PLUG)	
53	219090	M4 X 8MM LONG POZI PAN SEMS SCREW	
54	219003	M5 FORM A STEEL WASHER	
55	301038	PROCESSED AIR SEPARATOR	
56	220843	BLUE ROCKER SWITCH	
57	225130	MOULDED FLOAT CAGE	
58	219471	M4 X 12MM LONG POZI PAN SEMS SCREW	
59	226050	CABLE CLAMP (WHITE P CLIP)	
60	325160	FLUID CONTAINER & HANDLE ASSEMBLY	
61	325130	GREY CONTAINER	INCLUDES ITEMS 67 & 68
	300031	RED CONTAINER	INCLUDES ITEMS 67 & 68
	300030	BLUE CONTAINER	INCLUDES ITEMS 67 & 68
	325054	GREEN CONTAINER	INCLUDES ITEMS 67 & 68
	325055	YELLOW CONTAINER	INCLUDES ITEMS 67 & 68
	325056	BLACK CONTAINER	INCLUDES ITEMS 67 & 68
62	206135	TOGGLE FASTENER	
63	219047	M5 X 10MM LONG POZI PAN SEMS SCREW	
64	219330	M5 X 12MM LONG POZI PAN COUNTRSUNK SCREW	
65	21985V	SPACER	
66	219105	No8 X 5/8 INCH LONG POZI PAN PLASTITE SCREW	
67	206137	STUB AXLE	
68	219306	E-CLIP	
69	204028	10 INCH WHEEL	
70	219308	CIRCLIP	
71	206131	BLACK PLASTIC CAP	
72	202027	HOSE FLANGE GASKET	
73	206117	FLANGE	
74	204060	3 INCH CASTOR	
75	303127	TOOL MOUNTING BAR	
76	219316	No10 X 43MM LONG POZI PAN COUNTER SUNK PLASTITE SCREW	
77	303128	LOWER HANDLE	
78	418671	BLACK UPPER HANDLE	
79	20637V	25.4MM TUBE END STOP	
80	206128	HANDLE BLOCK SPACER	
81	219423	M6 COUNTERSUNK LOCK WASHER	
82	219422	M6 X 70MM LONG POZI PAN COUNTERSUNK SCREW	
83	206295	PLASTIC SADDLE FOOT	
84	206133	LOCKING BAR	
85	206127	LOCKING BAR SUPPORT	
86	219307	E CLIP	
87	206126	LOCKING BAR KNOB	
88	206132	BLACK PLASTIC CAP	
89	219312	COMPRESSION SPRING	