

OB28240 ORBIS COMPACT

230V 50/HZ

OB28240

OB28240/EURO

OB28240/OZ

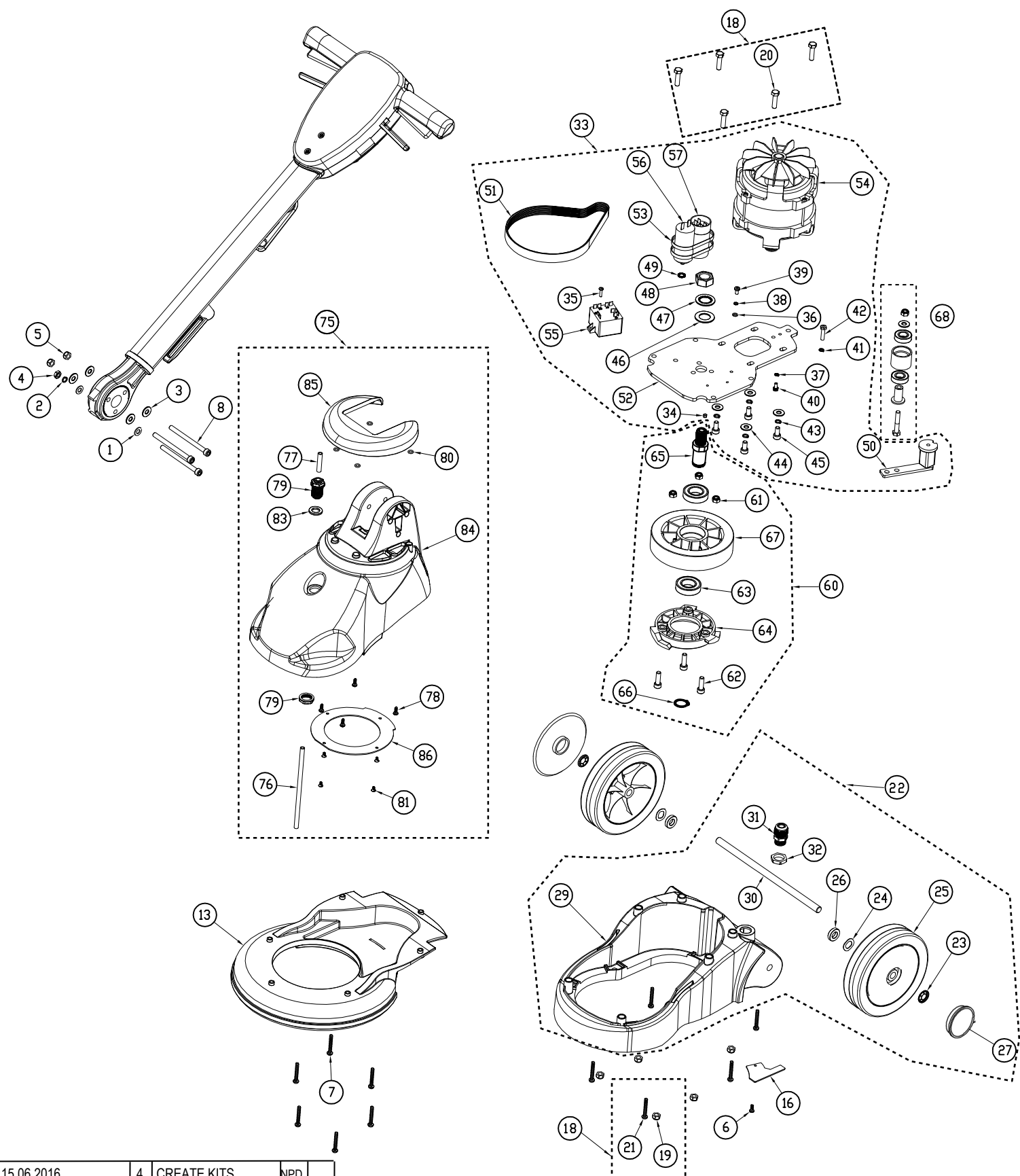
SERIES C

Service Parts List Issue 9 Dated 15-June-2016

Ref. Drawing 09-1059-0000 Issue 1 Dated 21st September 2011

Drawing Ref.	Assembly / Kit Number	Description / Part Number	Qty
	OB28240 & OB28240/EURO & OB28240/OZ	ORBIS COMPACT 230V 50HZ UK & EURO & OZ	1
1		00-0800-0501 M8 WASHER TYPE B	2
2		00-0800-0511 M8 SINGLE COIL SPRING WASHER	1
3		00-0800-0551 M8 WASHER	4
4		00-0800-0711 M8 HEX LOCK NUT BZP	1
5		00-0800-0751 M8 1/2 NYLOC NUT	2
6		02-3465-0000 SELF TAPPER (INNER SHIELD)	1
7		02-3515-0000 COVER SELF TAPPER KB60 x 40	6
8		02-4565-0000 M8x100 CAP HEAD BOLT	3
9		02-3537-0000 STRAPPING COIL 372.612.530 WHITE - NOT SHOWN ON DRAWING	8.66
10		03-5436-0000 TRUCARE SERVICE POSTCARDS - NOT SHOWN ON DRAWING	1
11		03-5866-0000 DATA PLATE #ADDITIONAL SPEC. - NOT SHOWN ON DRAWING	1
12		03-6126-0000 INSPECTION AND TEST RECORD TAG #ADDITIONAL SPEC. - NOT SHOWN ON DRAWING	1
13		03-8050-0067 ORBIS COMPACT BRUSH GUARD JET BLACK RAL9005	1
14		03-8068-0000 BODY CARTON PLAIN REF CP152468 - NOT SHOWN ON DRAWING	1
15		03-8069-0000 ORBIS COMPACT INSTRUCTION MANUAL - NOT SHOWN ON DRAWING	1
16		03-8075-0000 ELECTRICAL BLANKING PLATE	1
17		04-0221-0000 CABLE TIE BLACK REF NTB 50I - NOT SHOWN ON DRAWING	1
18	05-4421-0000	ORBIS COMPACT 230V 50Hz BASE ASSEMBLY	
19		00-0800-0751 M8 1/2 NYLOC NUT	5
20		00-0830-0111 M8 x 30 HEX HD BOLT	5
21		02-3515-0000 COVER SELF TAPPER KB60 x 40	6
22	05-4419-0000	ORBIS COMPACT CHASSIS ASSEMBLY INCLUDES THE FOLLOWING PARTS:	
23		02-0254-0000 STARLOCK WASHER	2
24		02-3185-0000 CRINKLE WASHER	2
25		02-3649-0000 WHEEL 7" CHAMP MK2	2
26		03-5736-0000 WHEEL AXLE SPACER	2
27		02-3124-0000 WHEEL CAP	2
29		03-8049-0035 ORBIS COMPACT BASE MOULD (RAL 7021)	1
30		03-8057-0000 WHEEL AXLE	1
31		04-3212-0000 M20 CABLE GLAND	1
32		04-3213-0000 M20 CABLE GLAND BACK NUT	1
33	05-4420-0000	ORBIS COMPACT MOTOR DRIVE PLATE ASSEMBLY	
34		00-0400-0721 M4 HEX NYLOC NUT BZP DIN985	1
35		00-0416-0011 M4 X 16 PAN POZI M/C SCREW BZP	1
36		00-0500-0501 M5 WASHER FORM A	1
37		00-0500-0511 M5 SINGLE COIL SPRING WASHER	1
38		00-0500-0531 M5 EXTERNAL SHAKEPROOF WASHER	1
39		00-0510-0011 M5 x 10 POZI PAN SCREW	1
40		00-0510-0091 M5 x 10 SOCKET HD SCREW	1
41		00-0600-0511 M6 SINGLE COIL SPRING WASHER	1
42		00-0625-0111 M6 x 25 HEX HEAD SCREW	1
43		00-0800-0511 M8 SINGLE COIL SPRING WASHER	4
44		00-0800-0551 M8 WASHER	4
45		00-0816-0091 M8 x 16 CAP HEAD SCREW	4
46		00-2000-0501 M20 PLAIN WASHER FORM B Z/P	2
47		00-2000-0521 M20 INTERNAL SHAKEPROOF WASHER	1
48		00-2000-0701 M20 FULL NUT Z/P	1
49		02-3250-0000 M8 FAN DISC WASHER ZINC PLATED	1
50		02-4555-0000 BELT TENSIONER [ROSTA]	1
51		02-4556-0000 DRIVE BELT PJ584	1
52		03-8054-0000 MOTOR MOUNTING PLATE	1
53		04-0279-0000 CABLE TIE - BLACK LK3X	2
54		04-3931-0000 MOTOR 550W 4 POLE 230V 50 Hz	1
55		04-3925-0000 RELAY 230V 550W MOTOR	1
56		04-3898-0000 10UF RUN CAPACITOR	1
57		04-3932-0000 51 - 68UF START CAPACITOR	1
58		NOT USED	
59		04-3901-0000 ORBIS COMPACT WIRING LOOM - NOT SHOWN ON DRAWING	1
60	05-4401-0000	ORBIS COMPACT DRIVE PULLEY ASSEMBLY	
61		00-0800-0751 M8 1/2 NYLOC NUT	3
62		00-0830-0091 M8 X 30 SKT CAP SCREW BZP	3
63		02-3846-0000 BEARING 6005-2RS FAG-KBC	2

64		03-6077-0000 ENGAGEMENT HUB	1
65		03-8129-0000 CENTRE SPINDLE	1
66		02-4554-0000 CIRCLIP EXTERNAL 25mm ST/ST	1
67		03-8055-0000 ORBIS COMPACT DRIVE PULLEY	1
68	05-4434-0000	ORBIS COMPACT TENSION ROLLER ASSEMBLY	
69		M8 WASHER	1
70		M8 1/2 NYLOC NUT	1
71		M8 x 45 HEX HEAD SET SCREW Z/P	1
72		BEARING 6002-2RS	2
73		ORBIS COMPACT ALUMINIUM IDLER PULLEY	1
74		ORBIS COMPACT IDLER PULLEY BEARING SPIGOT	1
75	05-4422-0000	ORBIS COMPACT MOTOR COVER ASSEMBLY	
76		02-0264-1000 NYLON TUBING 8mm PNSM 8-6	0.18
77		02-0264-1000 NYLON TUBING 8mm PNSM 8-6	0.04
78		02-3465-0000 SELF TAPPER (INNER SHIELD)	4
79		02-3636-0000 BULKHEAD FITTING PM1208E	1
80		02-4496-0000 O-RING	4
81		02-4575-0000 8 x 5/16 PAN POZI PLASFIX B/ZP	4
82		03-5482-0000 TRUVOX DECAL 60 x 60 - NOT SHOWN ON DRAWING	1
83		03-6342-0000 M15x3MM PLAIN WASHER RUBBER NEOPRENE 15MM ID	1
84		03-8051-0067 ORBIS COMPACT MOTOR COVER JET BLACK RAL9005	1
85		03-8052-0035 ORBIS COMPACT FAN COVER (RAL 5021)	1
86		03-8053-0024 ORBIS COMPACT INNER DISC (BLACK)	1



15.06.2016	4	CREATE KITS	NPD						
07.03.16	3	UPDATE WHEEL CAP	NPD						
06.09.13	2	Kit 68 added	NPD						
21.09.11	1027	1	MOTOR CHANGE-NOW LEMAC	NMN		SCALE	NTS	TITLE	
30.09.09		B	CENTRE SPINDLE CHANGE	MC	MC	CHECKED	SJ	GENERIC ORBIS COMPACT ASSY	
07.07.06		A	NEW DRAWING	SJ	SJ	DRN	SJ	PRODUCT	
DATE	ECN	ISS	REVISION RECORD	DR	CHK			OB28240	
								DRAWING/PART No	
								09-1059-0000	
								A4	SHEET 1 OF 1 SHEETS

OB28240 ORBIS COMPACT HANDLE PARTS LIST

230V 50/HZ

05-4423-0000 - UK

05-4483-0000 - EURO

05-4515-0000 - OZ

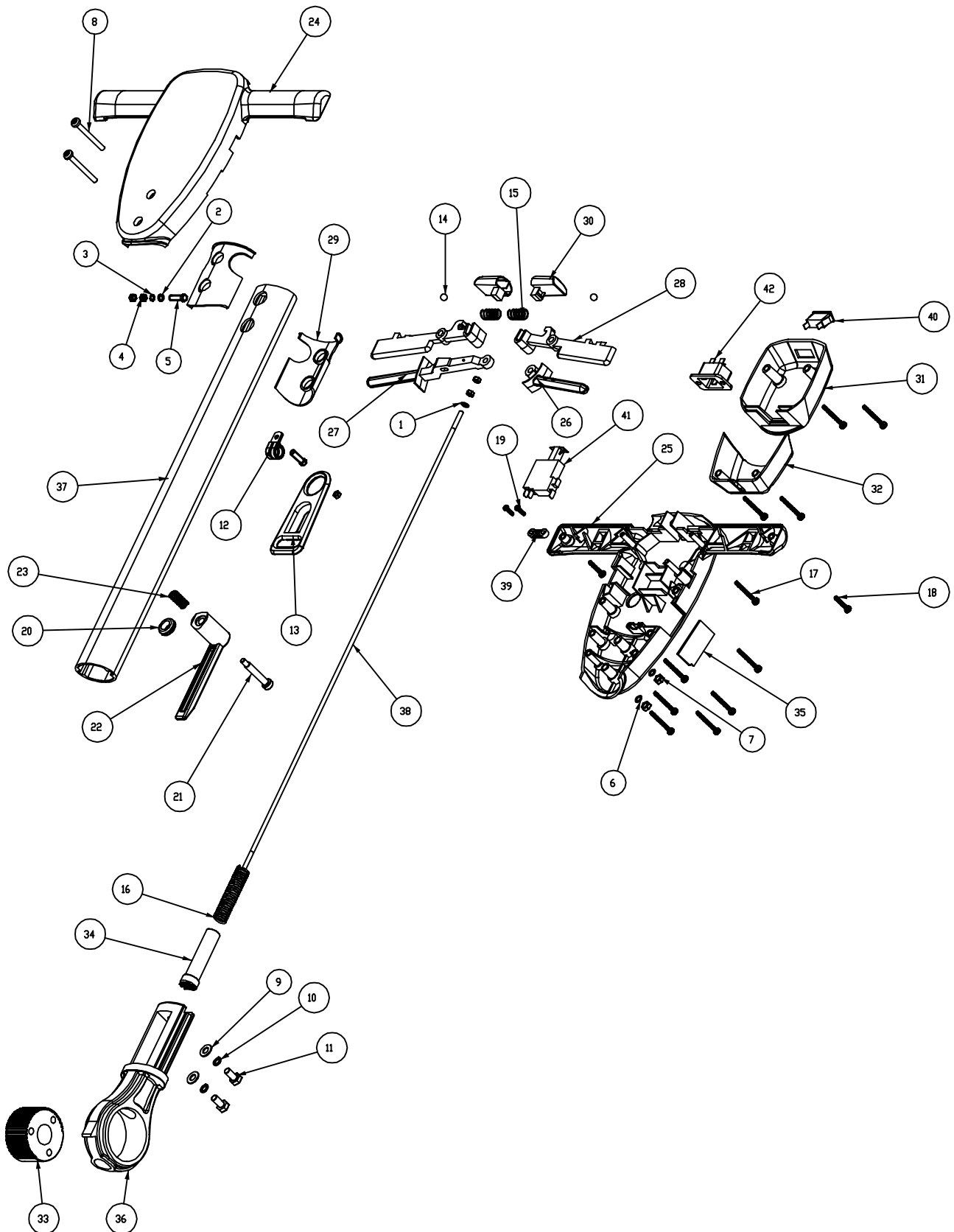
SERIES B

Service Parts List Issue 6 Dated 20th May 2014

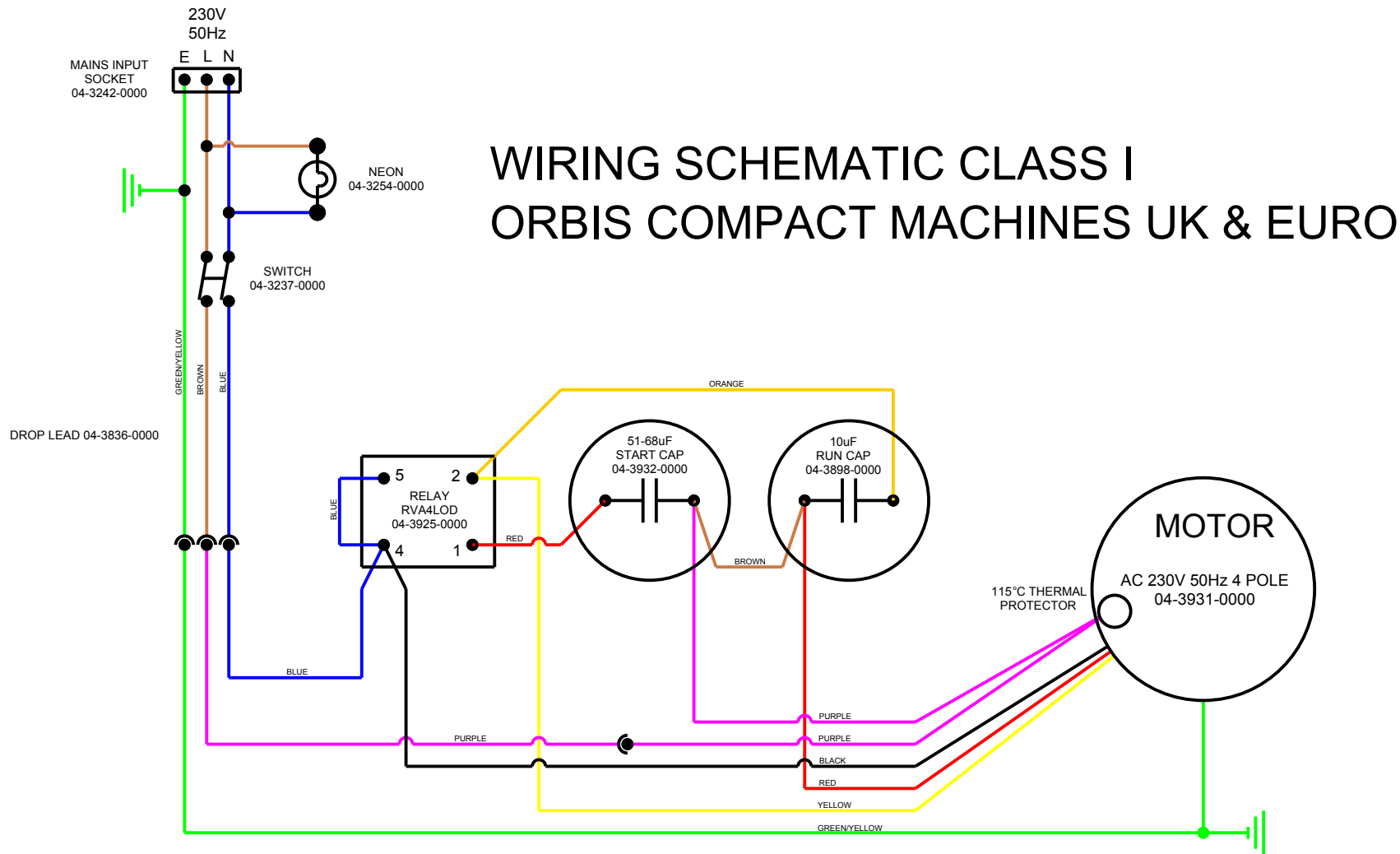
Ref. Drawing 09-1060-0000 Issue A Dated 7th July 2006

Drawing Ref.	Assembly / Kit Number	Description / Part Number	Qty
	OB28240 & OB28240/EURO & OB28240/OZ	ORBIS COMPACT 230V 50HZ UK & EURO & OZ HANDLE PARTS LIST	1
	05-4423-0000 (i)	ORBIS COMPACT HANDLE ASSEMBLY UK SEE DRAWING 09-1060-0000	
OR	05-4483-0000 (ii)	ORBIS COMPACT HANDLE ASSEMBLY EURO SEE DRAWING 09-1060-0000	
OR	05-4515-0000 (iii)	ORBIS COMPACT HANDLE ASSEMBLY OZ SEE DRAWING 09-1060-0000	
1		00-0500-0501 M5 WASHER FORM A	1
2		00-0500-0511 M5 SINGLE COIL SPRING WASHER	1
3		00-0500-0531 M5 EXTERNAL SHAKEPROOF WASHER	1
4		00-0500-0701 M5 HEX FULL NUT BZP	5
5		00-0520-0111 M5 X 20 HEX SET SCREW BZP	2
6		00-0600-0521 M6 INT S/PROOF WASHER BZP	2
7		00-0600-0701 M6 HEX FULL NUT BZP	2
8		00-0650-0011 M6 X 50 HEX SET SCREW A2	2
9		00-0800-0501 M8 WASHER TYPE B	2
10		00-0800-0511 M8 SINGLE COIL SPRING WASHER	2
11		00-0816-0111 M8 x 16 CAP HEAD SCREW	2
12		02-3151-0000 P CLIP - SPEC CPC 13 M5MSNE	1
13		02-3152-0000 CABLE STRAIN RELIEF BRACKET REF: BLACK 1053-4-00	1
14		02-3186-0000 MILD STEEL BALL BEARING 10MM DIA	2
15		02-3510-0000 HANDLE INTERLOCK SPRING SS5695 BS2056 27.3L 12.7OD	2
16		02-3511-0000 GEAR DOG SPRING 1139X2 13.98MM, 75.78MM COILS 16.4	1
17		02-3516-0000 KB50 x 40 SELF TAPPER	11
18		02-3517-0000 SELF TAPPER (POZI PAN HEAD) KB50 x 25	2
19		02-3518-0000 KB40 X 14 PAN POZI PT SCREW BZP	2
20		02-4210-0000 GROMMET 11.1MM BORE PV 70A	1
21		02-3523-0000 M6x8x40 SHOULDER BOLT	1
22		03-5403-0000 CABLE WINDER	1
23		03-5410-0000 CABLE WINDER SPRING	1
24		03-6086-0067 HANDLE CASE FRONT JET BLACK RAL9005	1
25		03-6087-0067 HANDLE CASE BACK JET BLACK RAL9005	1
26		03-6088-0067 SOLUTION LEVER JET BLACK RAL9005	1
27		03-6089-0067 GEAR LEVER JET BLACK RAL9005	1
28		03-6090-0067 TRIGGER LEFT & RIGHT JET BLACK RAL9005	2
29		03-6091-0000 HANDLE RUBBER BOOT MOULDING 70 SHORE NEOPRENE	2
30		03-6092-0067 INTERLOCK JET BLACK RAL9005	2
31		03-6093-0067 CORD INLET BOX JET BLACK RAL9005	1
32		03-6094-0067 CORD RETAINER JET BLACK RAL9005	1
33		03-6096-0000 HANDLE ADJ GEAR	1
34		03-6097-0000 HANDLE ADJUSTING GEAR DOG	1
35		03-6693-0067 HANDLE SOCKET BLANKING PLATE JET BLACK RAL9005	1
36		03-7831-0000 ALUMINIUM KNUCKLE PRESSURE DIE CAST	1
37		03-8059-0000 ORBIS COMPACT OVAL TUBE	1
38		03-8060-0000 ORBIS COMPACT GEAR ROD	1
39		04-0237-0000 CABLE CLAMP BAR TYPE CLAMP NO: 704	1
40		04-3254-0000 GREEN INDICATOR LIGHT 230V C0430ATNAC	1
41		04-3237-0000 SWITCH 700-2/6 REF 1620017380 WITH T-SECTION ACTUATOR	1
42		04-3242-0000 16amp INPUT SOCKET STF950 A1 6.3 X 0.8MM PUSH IN TAGS	1
43		04-3836-0000 ORBIS COMPACT DROP LEAD - (NOT SHOWN ON DRAWING)	1
44		04-3839-0000 ORBIS COMPACT HANDLE WIRING KIT - (NOT SHOWN ON DRAWING)	1
45		03-6148-0000 ORBIS HANDLE LABEL - (NOT SHOWN ON DRAWING)	1
46		03-6152-0000 ORBIS MULTILINGUAL LABEL - (NOT SHOWN ON DRAWING)	1
47 (i)		04-3055-0053 CORDSET UK PLUG 16A CONNECTOR (NOT SHOWN ON DRAWING)	1
47 (ii)		04-3055-0147 CORDSET EURO PLUG 16A CONNECTOR (NOT SHOWN ON DRAWING)	1
47 (iii)		04-3565-0000 20M MAINS CABLE (ORANGE) WITH AUSTRALIAN PLUG (NOT SHOWN ON DRAWING)	1

Truvox International Ltd.,
Third Avenue, Millbrook,
Southampton. Hampshire.
SO15 0LE.
Service & Spares: 023 80706601
Customer Services: 023 80706600
General Enquiries: 023 80702200



					SCALE	NTS	TITLE GENERIC ORBIS COMPACT HANDLE			
					CHECKED	SJ				
07.07.06		A	NEW DRAWING	SJ	DRN	SJ	PRODUCT	DRAWING/PART No	A4	SHEET 1 OF 1 SHEETS
DATE	CRO No	ISS	REVISION RECORD	DR	CHK	SJ	OB28240	09-1060-0000		



					MATERIAL:	GEN TOL		TM TRUVOX INTERNATIONAL LIMITED		
						X	± 0.5			
						X.X	± 0.2			
						X.XX	± 0.1			
						ANG	± 0.5 °			
1	1027	NOW USING LEMAC MOTOR CAPS AND RELAY	NMN	20 SEP 11	FINISH:	SCALE: X : X		TITLE: ORBIS CLASS 1 230V 50HZ MOTOR WIRING	PART NO.	
A	N/A	NEW DRAWING	MDC	12 FEB 09		DRN	CKD			
ISSUE	ECN	CHANGES	INT	DATE		NMN				
									09-1111-0000	