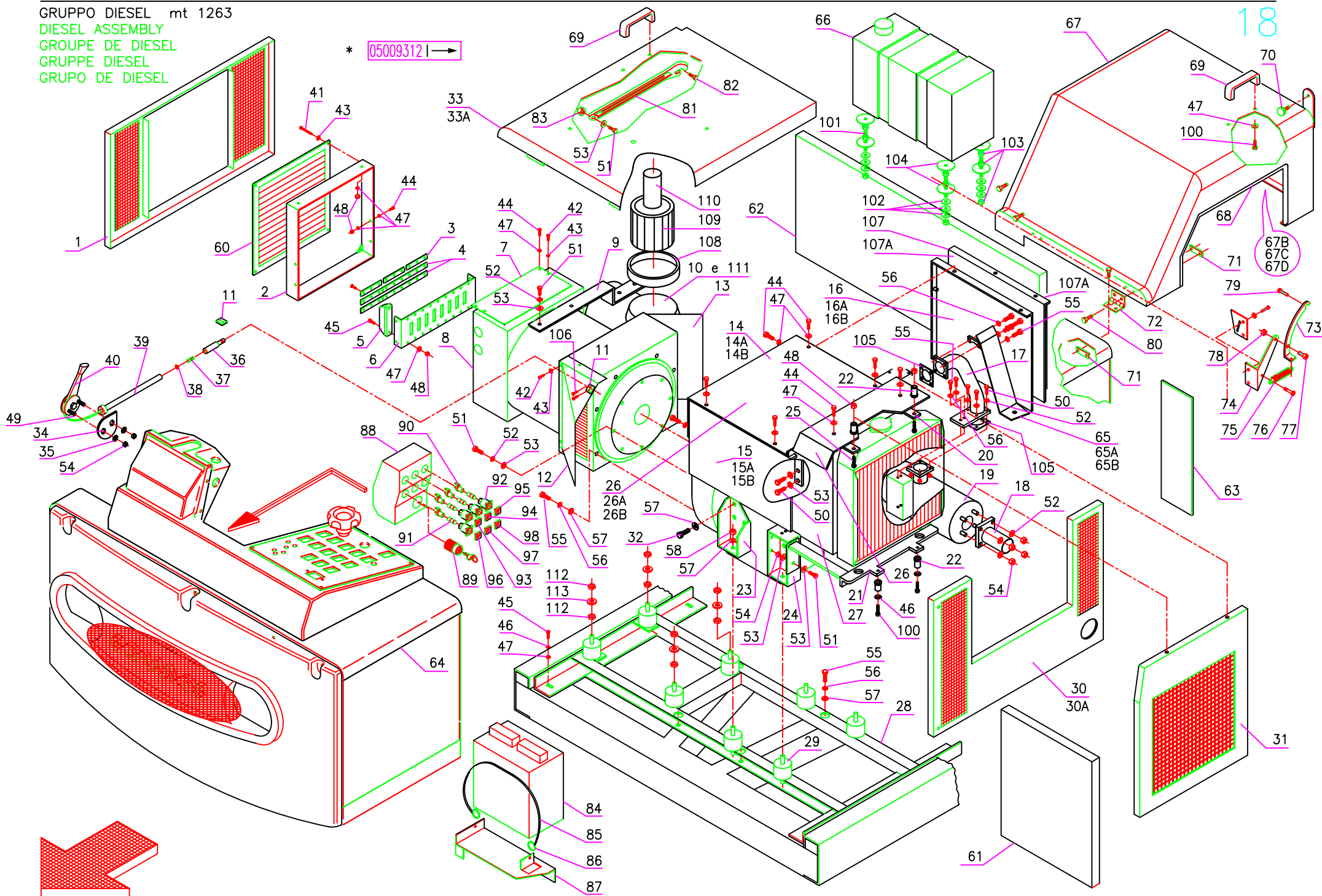


GRUPPO DIESEL mt 1263

DIESEL ASSEMBLY  
GROUPE DE DIESEL  
GRUPPE DIESEL  
GRUPO DE DIESEL

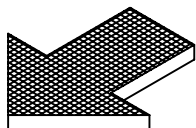
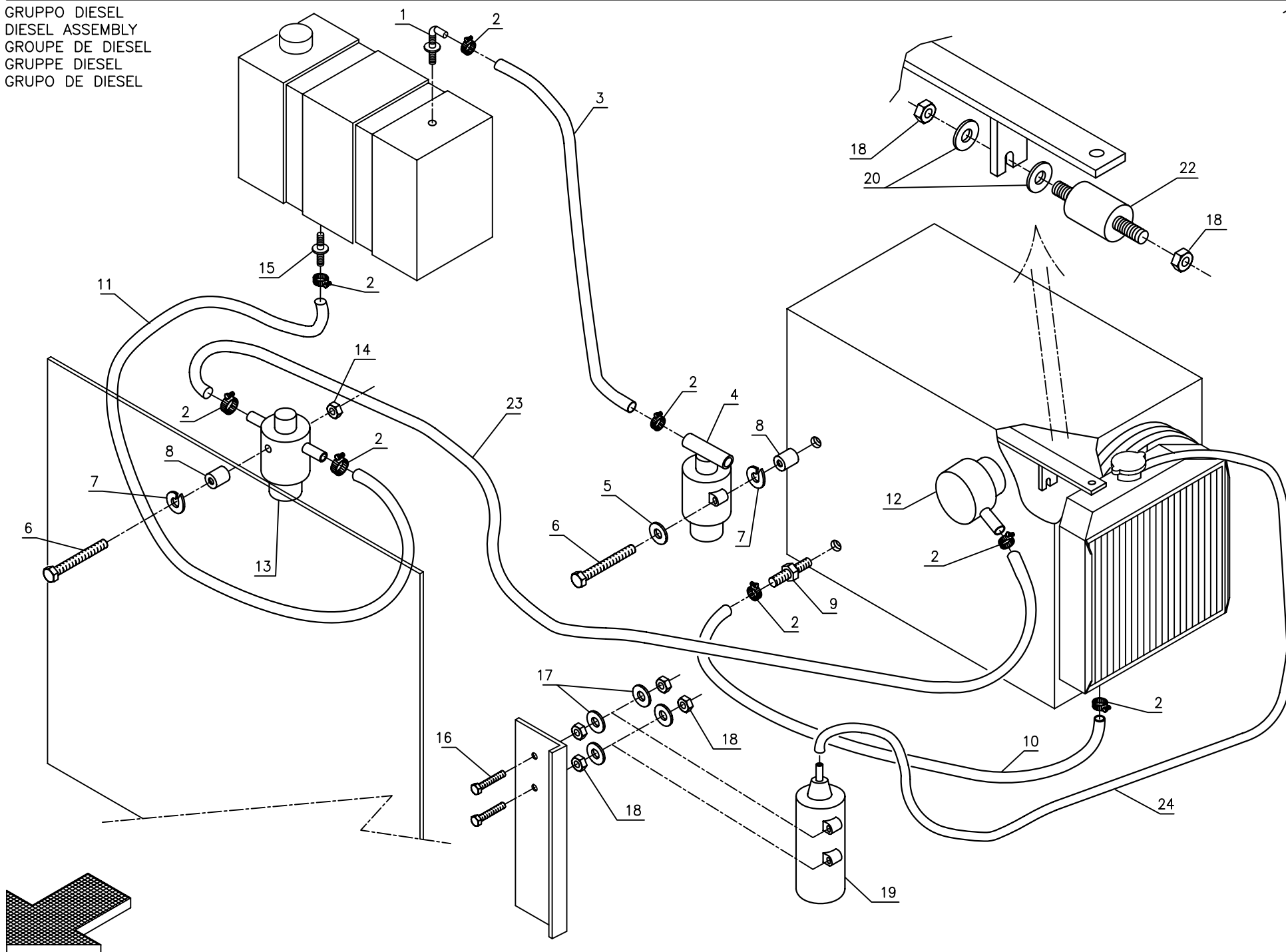
\* 05009312 | →



| Pos. | Mod. | Codice | Q.tà | Denominazione                  | Description             | Description               | Benennung              | Descripción               |
|------|------|--------|------|--------------------------------|-------------------------|---------------------------|------------------------|---------------------------|
| 01   |      | 206466 | 1    | PANNELLO                       | PANEL                   | PANNEAU                   | BLECH                  | PANEL                     |
| 02   |      | 206476 | 1    | CORNICE                        | FRAME                   | CADRE                     | UMFASSUNG              | MARCO                     |
| 03   |      | 206474 | 3    | PONTE DIODI                    | DIODE BRIDGE            | PONT DE DIODE             | DIODENBRÜCKE           | PUENTE DE DIODO           |
| 04   |      | 206475 | 2    | PONTE DIODI                    | DIODE BRIDGE            | PONT DE DIODE             | DIODENBRÜCKE           | PUENTE DE DIODO           |
| 05   |      | 409642 | 9    | DIODO                          | DIODE                   | DIODE                     | DIODE                  | DIODO                     |
| 06   |      | 400716 | 1    | SUPPORTO DIODI                 | DIODE SUPPORT           | SUPPORT DE DIODE          | DIODENHALTERUNG        | SOPORTE DE DIODO          |
| 07   |      | 206477 | 1    | COPERCHIO                      | COVER                   | COUVERCLE                 | DECKEL                 | TAPA                      |
| 08   |      | 412143 | 1    | ALTERNATORE                    | ALTERNATOR              | ALTERNATEUR               | ALTERNATOR             | ALTERNADOR                |
| 09   |      | 206505 | 1    | SUPPORTO FILTRO                | FILTER SUPPORT          | SUPPORT DE FILTRE         | FILTERHALTERUNG        | SOPORTE DE FILTRO         |
| 10   |      | 405438 | 1    | FILTRO ARIA                    | AIR FILTER              | FILTRE D'AIRE             | LUFTFILTER             | FILTRO DEL AIRE           |
| 11   |      | 206473 | 2    | SUPPORTO GUIDA CAVO            | CABLE GUIDE SUPPORT     | SUPPORT DE GUIDE DE CABLE | HALTERUNG KABELFÜHRUNG | SOPORTE DE GUIA CABLE     |
| 12   |      | 200908 | 1    | DEFLETTORE ANTERIORE           | FRONT BAFFLE            | DEFLECTEUR AVANT          | ABWEISER VORNE         | DEFLECTOR ANTERIOR        |
| 13   |      | 200909 | 1    | DEFLETTORE POSTERIORE          | REAR BAFFLE             | DEFLECTEUR ARRIERE        | ABWEISER HINTEN        | DEFLECTOR POSTERIOR       |
| 14   |      | 206499 | 1    | PROTEZIONE MOTORE              | MOTOR SUPPORT           | SUPPORT DE MOTEUR         | ABDECKUNG AUSPUFFROHR  | PROTECCION DE SILENCIADOR |
| 14A  |      | 209404 | 1    | TERMOISOLANTE ESTERNO          | OUTER THERMO INSULATING | THERMOISOLANT EXTERIEUR   | WÄRMEISOLIERUNG AUSSEN | TERMOAISLANTE EXTERIOR    |
| 14B  |      | 209405 | 1    | TERMOISOLANTE INTERNO          | INNER THERMO INSULATING | THERMOISOLANT INTERIEUR   | WÄRMEISOLIERUNG INNEN  | TERMOAISLANTE INTERIOR    |
| 15   |      | 206498 | 1    | PROTEZIONE MOTORE              | MOTOR PROTECTION        | PROTECTION DE MOTEUR      | MOTORSCHUTZ            | PROTECCION DE MOTOR       |
| 15A  |      | 209400 | 1    | TERMOISOLANTE INTERNO          | INNER THERMO INSULATING | THERMOISOLANT INTERIEUR   | WÄRMEISOLIERUNG INNEN  | TERMOAISLANTE INTERIOR    |
| 15B  |      | 209401 | 1    | FONOASSORBENTE ESTERNO         | OUTER SOUND DEADENER    | INSONORISANT EXTERIEUR    | SCHALLDICHTUNG AUSSEN  | FONOABSORBENTE EXTERIOR   |
| 16   |      | 206497 | 1    | PROTEZIONE MARMITTA            | MUFFLER PROTECTION      | PROTECTION DE POT         | ABDECKUNG AUSPUFFROHR  | PROTECCION DE SILENCIADOR |
| 16A  |      | 209398 | 1    | TERMOISOLANTE ESTERNO          | OUTER THERMO INSULATING | THERMOISOLANT EXTERIEUR   | WÄRMEISOLIERUNG AUSSEN | TERMOAISLANTE EXTERIOR    |
| 16B  |      | 209399 | 1    | TERMOISOLANTE INTERNO          | INNER THERMO INSULATING | THERMOISOLANT INTERIEUR   | WÄRMEISOLIERUNG INNEN  | TERMOAISLANTE INTERIOR    |
| 17   |      | 206501 | 1    | ENTRATA MARMITTA               | MUFFLER ENTRANCE        | POT D'ECHAPPEMENT         | AUSPUFFROHR            | ENTRADA SILENCIADOR       |
| 18   |      | 206502 | 1    | USCITA MARMITTA                | MUFFLER EXIT            | POT D'ECHAPPEMENT         | AUSPUFFROHR            | SALIDA SILENCIADOR        |
| 19   |      | 410310 | 1    | MARMITTA                       | MUFFLER                 | POT D'ECHAPPEMENT         | AUSPUFFROHR            | SILENCIADOR               |
| 20   |      | 206496 | 1    | SUPPORTO RADIATORE             | RADIATOR SUPPORT        | SUPPORT DE RADIATEUR      | KÜHLERHALTERUNG        | SOPORTE DE RADIADOR       |
| 21   |      | 206495 | 1    | SUPPORTO RADIATORE             | RADIATOR SUPPORT        | SUPPORT DE RADIATEUR      | KÜHLERHALTERUNG        | SOPORTE DE RADIADOR       |
| 22   |      | 204365 | 4    | BOCCOLA                        | SPACER                  | ENTRETOISE                | DISTANZHÜLSE           | DISTANCIADOR              |
| 23   |      | 206494 | 2    | SUPPORTO MOTORE                | MOTOR SUPPORT           | SUPPORT DE MOTEUR         | HALTERUNG MOTOR        | SOPORTE DE MOTOR          |
| 24   |      | 206493 | 2    | SUPPORTO MOTORE                | MOTOR SUPPORT           | SUPPORT DE MOTEUR         | HALTERUNG MOTOR        | SOPORTE DE MOTOR          |
| 25   |      | 408653 | 2    | VITE M6x35 UNI 5737            | SCREW                   | VIS                       | SCHRAUBE               | TORNILLO                  |
| 26   |      | 206500 | 1    | PROTEZIONE MOTORE              | MOTOR PROTECTION        | PROTECTION DE MOTEUR      | MOTORSCHUTZ            | PROTECCION DE MOTOR       |
| 26A  |      | 209402 | 1    | TERMOISOLANTE ESTERNO          | OUTER THERMO INSULATING | THERMOISOLANT EXTERIEUR   | WÄRMEISOLIERUNG AUSSEN | TERMOAISLANTE EXTERIOR    |
| 26B  |      | 209403 | 1    | TERMOISOLANTE ESTERNO          | OUTER THERMO INSULATING | THERMOISOLANT EXTERIEUR   | WÄRMEISOLIERUNG AUSSEN | TERMOAISLANTE EXTERIOR    |
| 27   |      | 407833 | 1    | MOTORE DIES. YANMAR 3TNV76-HGE | MOTOR                   | MOTEUR                    | MOTOR                  | MOTOR                     |
| 28   |      | 206483 | 1    | TELAIO MOTORE                  | FRAME MOTOR             | CHASSIS DU MOTEUR         | UNTERGESTELL MOTOR     | BASTIDOR DEL MOTOR        |
| 29   |      | 410468 | 8    | SUPPORTO                       | SUPPORT                 | SUPPORT                   | HALTERUNG              | SOPORTE                   |
| 30   |      | 206506 | 1    | PANNELLO                       | PANEL                   | PANNEAU                   | BLECH                  | PANEL                     |
| 30A  |      | 209408 | 1    | FONOASSORBENTE INTERNO         | INNER SOUND DEADENER    | INSONORISANT INTERIEUR    | SCHALLDICHTUNG INNEN   | FONOABSORBENTE INTERIOR   |
| 31   |      | 206507 | 1    | PROTEZIONE RADIATORE           | RADIATOR PROTECTION     | PROTECTION DE RADIATEUR   | KÜHLERSCHUTZ           | PROTECCION DE RADIADOR    |
| 32   |      | 408712 | 14   | VITE M10X30 TE UNI 5739        | SCREW                   | VIS                       | SCHRAUBE               | TORNILLO                  |
| 33   |      | 206482 | 1    | COPERCHIO                      | COVER                   | COUVERCLE                 | DECKEL                 | TAPA                      |
| 33A  |      | 209349 | 1    | FONOASSORBENTE INTERNO         | INNER SOUND DEADENER    | INSONORISANT INTERIEUR    | SCHALLDICHTUNG INNEN   | FONOABSORBENTE INTERIOR   |
| 34   |      | 209436 | 1    | GUARNIZIONE LUBRITENE 3mm.     | GASKET                  | JOINT                     | DICHTUNG               | GUARNICION                |
| 35   |      | 400305 | 2    | RONDELLA ISOLANTE FORO D.13    | WASHER                  | RONDELLE                  | UNTERLAGSCHEIBE        | ARANDELA                  |
| 36   |      | 205956 | 1    | GUIDA CAVO                     | CABLE GUIDE             | GUIDE DE CABLE            | KABELFÜHRUNG           | GUIA CABLE                |
| 37   |      | 209886 | 1    | MOLLA                          | SPRING                  | RESSORT                   | FEDER                  | RESORTE                   |
| 38   |      | 409142 | 1    | RONDELLA Ø4x9 UNI 6592         | WASHER                  | RONDELLE                  | UNTERLAGSCHEIBE        | ARANDELA                  |
| 39   |      | 410482 | 1    | CAVO                           | CABLE                   | CABLE                     | KABEL                  | CABLE                     |
| 40   |      | 410472 | 1    | LEVA                           | LEVER                   | LEVIER                    | HEBEL                  | PALANCA                   |
| 41   |      | 407653 | 4    | VITE M5x50 TE UNI 5739 INOX    | SCREW                   | VIS                       | SCHRAUBE               | TORNILLO                  |
| 42   |      | 407644 | 3    | VITE M5x12 TE UNI 5739         | SCREW                   | VIS                       | SCHRAUBE               | TORNILLO                  |

| Pos. | Mod. | Codice | Q.tà | Denominazione                | Description             | Description                | Benennung              | Descripción             |
|------|------|--------|------|------------------------------|-------------------------|----------------------------|------------------------|-------------------------|
| 43   |      | 409334 | 7    | RONDELLA DENTELLATA Ø5       | LOCK WASHER             | RONDELLE FREIN             | ZAHNSCHEIBE            | ARANDELA DENTADA        |
| 44   |      | 407663 | 12   | VITE M6X16 TE UNI 5739       | SCREW                   | VIS                        | SCHRAUBE               | TORNILLO                |
| 45   |      | 407666 | 22   | VITE M6x20 TE UNI 5739       | SCREW                   | VIS                        | SCHRAUBE               | TORNILLO                |
| 46   |      | 409336 | 6    | RONDELLA Ø6 DENTELLATA       | LOCK WASHER             | RONDELLE FREIN             | ZAHNSCHEIBE            | ARANDELA DENTADA        |
| 47   |      | 409160 | 32   | RONDELLA Ø6x18 UNI 6593      | WASHER                  | RONDELLE                   | UNTERLAGSCHEIBE        | ARANDELA                |
| 48   |      | 409082 | 24   | DADO M6 AUTOBL. UNI 7474     | LOCK NUT                | ECROU AUTOBLOQUANT         | STOPMUTTER             | TUERCA AUTOBLOCANTE     |
| 49   |      | 408982 | 2    | VITE M8X30 TPSEI UNI5933     | SCREW                   | VIS                        | SCHRAUBE               | TORNILLO                |
| 50   |      | 408676 | 8    | VITE M8x30 TE UNI 5739       | SCREW                   | VIS                        | SCHRAUBE               | TORNILLO                |
| 51   |      | 408672 | 12   | VITE M8x22 TE UNI 5739       | SCREW                   | VIS                        | SCHRAUBE               | TORNILLO                |
| 52   |      | 409340 | 16   | RONDELLA DENTELLATA Ø8       | LOCK WASHER             | RONDELLE FREIN             | ZAHNSCHEIBE            | ARANDELA DENTADA        |
| 53   |      | 409175 | 20   | RONDELLA Ø8x17 UNI 6592      | WASHER                  | RONDELLE                   | UNTERLAGSCHEIBE        | ARANDELA                |
| 54   |      | 409085 | 10   | DADO AUTOBL. M8 UNI 7474     | LOCK NUT                | ECROU AUTOBLOQUANT         | STOPMUTTER             | TUERCA AUTOBLOCANTE     |
| 55   |      | 408676 | 14   | VITE M8X30 TE UNI 5739       | SCREW                   | VIS                        | SCHRAUBE               | TORNILLO                |
| 56   |      | 409347 | 14   | RONDELLA DENT. Ø 10          | WASHER                  | RONDELLE                   | UNTERLAGSCHEIBE        | ARANDELA                |
| 57   |      | 409191 | 24   | RONDELLA Ø10x21 UNI 6592     | WASHER                  | RONDELLE                   | UNTERLAGSCHEIBE        | ARANDELA                |
| 58   |      | 409090 | 16   | DADO AUTOBL. M10 UNI 7474    | LOCK NUT                | ECROU AUTOBLOQUANT         | STOPMUTTER             | TUERCA AUTOBLOCANTE     |
| 59   |      | 408980 | 4    | VITE M8x14 TPSEI UNI 5933    | SCREW                   | VIS                        | SCHRAUBE               | TORNILLO                |
| 60   |      |        | 1    | PRESA D'ARIA ALTERNATORE     | AIR INTAKE ALTERNATOR   | PRISE D'AIR DU ALTERNATEUR | LUFTOFFNUNG ALTERNATOR | TOMA DE AIRE ALTERNADOR |
| 61   |      | 209348 | 1    | FONOASSORBENTE ESTERNO       | OUTER SOUND DEADENER    | INSONORISANT EXTERIEUR     | SCHALLDICHTUNG AUSSEN  | FONOABSORBENTE EXTERIOR |
| 62   |      | 209347 | 1    | FONOASSORBENTE ESTERNO       | OUTER SOUND DEADENER    | INSONORISANT EXTERIEUR     | SCHALLDICHTUNG AUSSEN  | FONOABSORBENTE EXTERIOR |
| 63   |      | 209346 | 1    | TERMOISOLANTE ESTERNO        | OUTER THERMO INSULATING | THERMOISOLANT EXTERIEUR    | WÄRMEISOLIERUNG AUSSEN | TERMOAISLANTE EXTERIOR  |
| 64   |      | 209902 | 1    | TELAIO MACCHINA              | MACHINE FRAME           | CHASSIS DU MACHINE         | FAHRGESTELL            | BASTIDOR DE MAQUINA     |
| 65   |      | 206503 | 1    | RIPARO MARMITTA              | PROTECTION              | PROTECTION                 | ABDECKUNG              | PROTECCION              |
| 65A  |      | 209406 | 1    | TERMOISOLANTE ESTERNO        | OUTER THERMO INSULATING | THERMOISOLANT EXTERIEUR    | WÄRMEISOLIERUNG AUSSEN | TERMOAISLANTE EXTERIOR  |
| 65B  |      | 209407 | 1    | TERMOISOLANTE ESTERNO        | OUTER THERMO INSULATING | THERMOISOLANT EXTERIEUR    | WÄRMEISOLIERUNG AUSSEN | TERMOAISLANTE EXTERIOR  |
| 66   |      | 408232 | 1    | SERBATOIO DIESEL             | DIESEL TANK             | RESERVOIR DE DIESEL        | DIESELTANK             | TANQUE DE DIESEL        |
| 67   |      | 206485 | 1    | COFANO                       | BONNET                  | CAPOT                      | ABDECKHAUBE            | CAPOTA                  |
| 67A  |      | 209385 | 1    | FONOASSORBENTE INTERNO       | INNER SOUND DEADENER    | INSONORISANT INTERIEUR     | SCHALLDICHTUNG INNEN   | FONOABSORBENTE INTERIOR |
| 68   |      | 209358 | 1    | GUAINA                       | GAITER                  | GAINE                      | SCHUTZMANTEL           | VAINA                   |
| 69   |      | 410271 | 2    | MANIGLIA                     | HANDLE                  | MANCHE                     | HANDGRIFF              | MANILLA                 |
| 70   |      | 410224 | 1    | POMELLO                      | KNOB                    | POMMEAU                    | RENDELSCHRAUBE         | POMO                    |
| 71   |      | 206299 | 4    | PIASTRINA                    | PLAQUE                  | PLAQUETTE                  | BEFESTIGUNGSAUFLAGE    | PLAQUETA                |
| 72   |      | 400508 | 2    | CERNIERA                     | HINGE                   | CHARNIERE                  | SCHARNIER              | BISAGRA                 |
| 73   |      | 206487 | 1    | PUNTELLO                     | PROP                    | LEVIER                     | ABSTÜTZUNG             | PUNTAL                  |
| 74   |      | 206490 | 1    | SUPPORTO                     | SUPPORT                 | SUPPORT                    | HALTERUNG              | SOPORTE                 |
| 75   |      |        | 1    | MOLLA                        | SPRING                  | RESSORT                    | FEDER                  | RESORTE                 |
| 76   |      | 408877 | 1    | VITE Ø4,2X13 UNI 6954 AUTOF. | SCREW                   | VIS                        | SCHRAUBE               | TORNILLO                |
| 77   |      | 408823 | 1    | VITE M10X16 TCEI UNI 5931    | SCREW                   | VIS                        | SCHRAUBE               | TORNILLO                |
| 78   |      | 409060 | 1    | DADO M10X8 INOX UNI 5588     | NUT                     | ECROU                      | MUTTER                 | TUERCA                  |
| 79   |      | 408678 | 1    | VITE M8x35 TE UNI 5739       | SCREW                   | VIS                        | SCHRAUBE               | TORNILLO                |
| 80   |      | 408957 | 8    | VITE M5X16 TPSEI UNI 5933    | SCREW                   | VIS                        | SCHRAUBE               | TORNILLO                |
| 81   |      | 400304 | 1    | PUNTELLO                     | PROP                    | LEVIER                     | ABSTÜTZUNG             | PUNTAL                  |
| 82   |      | 408884 | 1    | VITE 4,8X16 AUTOF. UNI 6954  | SCREW                   | VIS                        | SCHRAUBE               | TORNILLO                |
| 83   |      | 409046 | 1    | DADO M8 UNI 5588             | NUT                     | ECROU                      | MUTTER                 | TUERCA                  |
| 84   |      | 410870 | 1    | BATTERIA AVVIAMENTO 12V      | STARTER BATTERY         | BATTERIE DU DEMARRAGE      | STARTERBATTERIE        | BATERIA DE ARRANQUE     |
| 85   |      | 408586 | 2    | GUARNIZIONE OR 208           | O-RING                  | JOINT                      | O-RING                 | JUNTA ANULAR            |
| 86   |      | 205834 | 2    | ANELLO                       | RING                    | ANNEAU                     | RING                   | ANILLO                  |
| 87   |      | 206489 | 1    | SUPPORTO                     | SUPPORT                 | SUPPORT                    | HALTERUNG              | SOPORTE                 |
| 88   |      | 409797 | 1    | CRUSCOTTO                    | INSTRUMENT BOARD        | TABEAU DE BORD             | ARMATURENBRETT         | SALPICADERO             |
| 89   |      | 409260 | 1    | COMMUTATORE                  | COMMUTATOR              | COMMUTATEUR                | SCHALTUNG              | CONMUTADOR              |
| 90   |      | 409552 | 6    | CORPO SPIA                   | BODY                    | EMBASE DE VOYANT           | GEHÄUSE                | CUERPO LAMPARA TESTIGO  |
| 91   |      | 409522 | 6    | LAMPADA 12V 3W               | ELECTRIC BULB           | AMPOULE                    | GLÜHLAMPE              | LAMPARA                 |

| Pos. Mod. | Codice | Q.tà | Denominazione                   | Description                 | Description                | Benennung                | Descripción                      |
|-----------|--------|------|---------------------------------|-----------------------------|----------------------------|--------------------------|----------------------------------|
| 92        | 210521 | 6    | PORTALAMPADA                    | LAMP HOLDER                 | DOUILLE                    | LAMPENFASSUNG            | PORTALAMPARAS                    |
| 93        | 409561 | 1    | VETRO ROSSO ALTERNATORE         | GLASS RED ALTERNATOR        | VERRE ROUGE ALTERNATEUR    | GLAS ROT ALTERNATOR      | VIDRIO ROJO ALTERNADOR           |
| 94        | 409562 | 1    | VETRO ROSSO PRESSIONE OLIO      | GLASS RED PRESSURE OIL      | VERRE ROUGE PRESSION HUILE | GLAS ROT ÖLDRUCK         | VIDRIO ROJO PRESION ACEITE       |
| 95        | 409570 | 1    | VETRO ROSSO TEMP. ACQUA         | GLASS RED WATER TEMP.       | VERRE ROUGE TEMP. D'EAU    | GLAS ROT WASSERTEMP.     | VIDRIO ROJO TEMPERATURA AGUA     |
| 96        | 409569 | 1    | VETRO GIALLO PRERISCALDAM.      | GLASS YELLOW PREHEATING     | VERRE JAUNE PRECHAUFFAGE   | GLAS GELB VORWÄRMUNG     | VIDRIO AMARILLO PRECALIENTAMENTO |
| 97        | 409563 | 1    | VETRO GIALLO RISERVA DIESEL     | GLASS YELLOW DIESEL RESERVE | VERRE JAUNE RESERVE DIESEL | GLAS GELB RESERVE DIESEL | VIDRIO AMARILLO RESERVA DIESEL   |
| 98        | 409554 | 1    | VETRO SPIA VERDE                | GREEN CRISTAL               | CABOCHON TEMOIN VERT       | GRÜNE GLASLAMPE          | VIDRIO LAMPARA VERDE             |
| 100       | 407661 | 6    | VITE M6x14 TE UNI 5739          | SCREW                       | VIS                        | SCHRAUBE                 | TORNILLO                         |
| 101       | 408916 | 4    | GRANO M8x60 E.I. UNI 5923       | DOWEL                       | VIS                        | MADENSCHRAUBE            | TORNILLO                         |
| 102       | 409180 | 4    | RONDELLA Ø 9x32 UNI 6593        | WASHER                      | RONDELLE                   | UNTERLAGSCHEIBE          | ARANDELA                         |
| 103       | 409085 | 12   | DADO AUTOBL. M8 UNI 7474        | LOCK NUT                    | ECROU AUTOBLOQUANT         | STOPMUTTER               | TUERCA AUTOBLOCANTE              |
| 104       | 400125 | 8    | RONDELA SPECIALE                | SPECIAL WASHER              | RONDELLE SPECIALE          | UNTERLAGSCHEIBE SPEZIAL  | ARANDELA ESPECIAL                |
| 105       |        | 2    | GUARNIZIONE ORIGINALE MOTORE    | O-RING                      | JOINT                      | O-RING                   | JUNTA                            |
| 106       | 408792 | 2    | VITE M5X30 TCEI UNI 5931        | SCREW                       | VIS                        | SCHRAUBE                 | TORNILLO                         |
| 107       | 206504 | 1    | PANNELLO                        | PANEL                       | PANNEAU                    | BLECH                    | PANEL                            |
| 107A      | 200952 | 2    | FONOASSORBENTE                  | SOUND DEADENER              | INSONORISANT               | SCHALLDICHTUNG           | FONOABSORBENTE                   |
| 108       | 405439 | 1    | FASCETTA                        | CLAMP                       | COLLIER                    | BRIDE                    | ABRAZADERA                       |
| 109       | 405440 | 1    | CARTUCCIA PRIMARIA              | PRIMARY CARTRIDGE           | PRIMAIRE CARTOUCHE         | PRIMÄRFILTER             | FILTRO PRIMARIO                  |
| 110       | 405441 | 1    | CARTUCCIA DI SICUREZZA          | SAFETY CARTRIDGE            | CARTOUCHE DU SECURITE      | SICHERHEITSFILTER        | FILTRO DE SEGURIDAD              |
| 111       | 405442 | 1    | PREFILTRO                       | AIR PRECLEANER              | FILTRE D'AIRE              | LUFTFILTER               | PREFILTRO DEL AIRE               |
| 112       | 409059 | 8    | DADO M10X6 UNI 5589 ZINC        | LOCK NUT                    | ECROU AUTOBLOQUANT         | STOPMUTTER               | TUERCA AUTOBLOCANTE              |
| 113       | 409194 | 4    | ROSETTA 11X30X2,5 UNI 6593 ZINC | WASHER                      | RONDELLE                   | UNTERLAGSCHEIBE          | ARANDELA                         |



| Pos. | Mod. | Codice | Q.tà | Denominazione                  | Description | Description        | Benennung         | Descripción          |
|------|------|--------|------|--------------------------------|-------------|--------------------|-------------------|----------------------|
| 01   |      | 410357 | 1    | PORTAGOMMA A GOMITO M10X1      | CONNECTOR   | RACCORD            | SCHLAUCHANSCHLUSS | EMPALME TUBO DE GOMA |
| 02   |      | 410292 | 8    | FASCETTA A VITE 10-16 X 9      | CLAMP       | COLLIER            | BRIDE             | ABRAZADERA           |
| 03   |      | 200957 | 1    | TUBO SFIATO SERB. 6x11,5x1600  | HOSE        | TUYAU              | SCHLAUCH          | TUBO DE GOMA         |
| 04   |      |        | 1    | FILTRO GASOLIO                 | FILTER      | FILTRE             | FILTER            | FILTRO               |
| 05   |      | 409175 | 1    | ROSETTA 8X17X1,6 UNI 6592      | WASHER      | RONDELLE           | UNTERLAGSCHEIBE   | ARANDELA             |
| 06   |      | 408688 | 1    | VITE M8x90 UNI 5737            | SCREW       | VIS                | SCHRAUBE          | TORNILLO             |
| 07   |      | 409181 | 1    | ROSETTA 8X13X2,2_GROWER        | LOCK WASHER | RONDELLE FREIN     | ZAHNSHEIBE        | ARANDELA DENTADA     |
| 08   |      | 204365 | 2    | DISTANZIALE                    | SPACER      | ENTRETOISE         | DISTANZHÜLSE      | DISTANCIADOR         |
| 09   |      | 412151 | 1    | PORTAGOMMA DIR. 1/8"           | CONNECTOR   | RACCORD            | SCHLAUCHANSCHLUSS | EMPALME TUBO DE GOMA |
| 10   |      | 209628 | 1    | TUBO CARB. 7,5X14X550          | HOSE        | TUYAU              | SCHLAUCH          | TUBO DE GOMA         |
| 11   |      | 209657 | 1    | TUBO CARB. 7,4X14X1100         | HOSE        | TUYAU              | SCHLAUCH          | TUBO DE GOMA         |
| 12   |      |        | 1    | POMPA C                        | PUMP        | POMPE              | PUMPE             | BOMBA                |
| 13   |      |        | 1    | PREFILTRO                      | FILTER      | FILTRE             | FILTER            | FILTRO               |
| 14   |      | 409085 | 1    | DADO M8X8,5 AUTOBL. UNI 7474   | LOCK NUT    | ECROU AUTOBLOQUANT | STOPMUTTER        | TUERCA AUTOBLOCANTE  |
| 15   |      | 412151 | 1    | PORTAGOMMA DIR. 1/4"           | CONNECTOR   | RACCORD            | SCHLAUCHANSCHLUSS | EMPALME TUBO DE GOMA |
| 16   |      | 407666 | 2    | VITE M6x20 TE UNI 5739         | SCREW       | VIS                | SCHRAUBE          | TORNILLO             |
| 17   |      | 409175 | 4    | RONDELLA Ø8x17 UNI 6592        | WASHER      | RONDELLE           | UNTERLAGSCHEIBE   | ARANDELA             |
| 18   |      | 409046 | 6    | DADO M8 UNI 5588               | NUT         | ECROU              | MUTTER            | TUERCA               |
| 19   |      |        | 1    | SERBATOIO LIQUIDO RADIATORE    | TANK        | RESERVOIR          | TANK              | DEPOSITO             |
| 20   |      | 409179 | 2    | ROSETTA 9X24X2,5 UNI 6593      | WASHER      | RONDELLE           | UNTERLAGSCHEIBE   | ARANDELA             |
| 22   |      | 414659 | 2    | DISTANZIALE                    | SPACER      | ENTRETOISE         | DISTANZHÜLSE      | DISTANCIADOR         |
| 23   |      | 209642 | 1    | TUBO CARB. 7,4X14X1000         | HOSE        | TUYAU              | SCHLAUCH          | TUBO DE GOMA         |
| 24   |      | 200958 | 1    | TUBO SFIATO RADIAT. 6x11,5x460 | HOSE        | TUYAU              | SCHLAUCH          | TUBO DE GOMA         |